

## Fish parasites: Platyhelminthes (Monogenea, Digenea, Cestoda) and Nematodes, reported from off New Caledonia

Jean-Lou JUSTINE

Équipe Biogéographie Marine Tropicale, Unité Systématique, Adaptation, Évolution (CNRS, UPMC, MNHN, IRD), Institut de Recherche pour le Développement, BP A5, 98848 Nouméa Cedex, Nouvelle-Calédonie  
justine@noumea.ird.nc

The records presented include a parasite-host list and a host-parasite list. The reference is indicated for each record. The lists deal only with published reports; unpublished results by the author or identifications of specimens by other researchers are not included. Papers with insufficient taxonomic information, such as those of Morand *et al.* (2000) which reports digeneans and nematodes in chaetodontid fishes, without any parasite names, are not included in the lists.

### Numbers of parasites recorded

The present lists include a total of 130 records of parasites: 40 monopisthocotylean monogeneans, 4 polyopisthocotylean monogeneans, 66 digeneans, 6 cestodes and 14 nematodes. Although a few early reports might have escaped the attention of the author, a striking fact is that only a single monogenean (among 44 records) and a single nematode (among 14) were recorded before 2000. For the digeneans, a short visit by Manter in 1967 included 46 of the 66 records. The number of fish species in the lists is only 98, less than 10% of the total number of coral reef fish recorded; in addition, many of these fish have probably been investigated only for specific groups of parasites (i.e. only monogeneans, or only digeneans). Clearly, the biodiversity of fish parasites of New Caledonia has not been studied seriously and there are very few records before the beginning of the 21st century.

### Is the list representative of the biodiversity of fish parasites in New Caledonia?

The answer is clearly no. These lists can be used as preliminary checklists, but certainly cannot be used as an evaluation of the biodiversity of parasites of coral reef fishes. Lim (1998) and Whittington (1998) have evaluated the number of monogeneans per fish species as 3 and 5, respectively. With about 1,200 species of coral reef fishes, the number of monogeneans expected to be found off New Caledonia is 3,600–6,000, numbers which, when compared to the number of species reported here (44, or about 1% of the expected number!), show the incredible paucity of our knowledge. Recent results show that certain species of coral reef fishes may harbour up to 13 species of gill monogeneans (Fig. 1; Justine, 2006), and perhaps as many other species of parasites as well. Including all groups, we may expect 10,000–20,000 species of parasites in the fish off New Caledonia. Again, the number recorded here (130 for all groups) is close to 1% of the expected total number.

### About host names

A major work on the New Caledonian parasite fauna was that of Durio & Manter (1968a,b, 1969). Unfortunately, many fishes from which Manter collected digeneans were not identified at the species level. I have tried, in this paper, to “translate” the common names used by Manter into binomial nomenclature; this is based on an evaluation of the knowledge of fish taxonomy by local fishermen, and an appreciation of the difficulty of identifying species. The “bec de cane”, known by everybody in New Caledonia, can safely be identified as *Lethrinus nebulosus*. The “anglais” is probably *Lutjanus bohar*. The “loche castex” is most probably a species of *Plectorhinchus* or *Diagramma pictum*. Manter used “leche”, a misprint for “loche” the common name of groupers in New Caledonia; there are about 40 species of epinephelins in New Caledonia, so “leche” is translated here as “Serranidae”. However, “loche bleue” can safely be identified as *Epinephelus cyanopodus*, because no other grouper is qualified as being “blue”; in contrast, the “red cod” could be any of the several species of *Epinephelus* or *Cephalopholis*. The host names, invalid or valid, are explained in full in the host-parasite section, but only a “probable translation” is retained in the parasite-host list. Host names have been updated using FishBase (Froese & Pauly, 2006).

## ACKNOWLEDGEMENTS

Tom Cribb helped in correcting the *Lepidapedoides 'kerapu'* into *L. angustus*. Ian Beveridge kindly edited the English. Many thanks to all colleagues who sent reprints, and to Jimmy Cassone in MNHN who provided photocopies.

## REFERENCES

- BAER J. G., & EUZET L., 1962. Révision critique des cestodes tétraphyllides décrits par T. Southwell. *Bulletin de la Société neuchâteloise des Sciences naturelles*, **71**, 63-122.
- BRAY R. A., & CRIBB T. H., 2000a. The status of the genera *Hysteroleclithoides* Yamaguti, 1934, *Neotheletrum* Gibson & Bray, 1979 and *Machidatrema* Leon-Regagnon, 1998 (Digenea: Hemiuroidea), including a description of *M. leonae* n. sp. from Australian waters. *Systematic Parasitology*, **46**, 1-22.
- BRAY R. A., & CRIBB T. H., 2000b. A new species of *Aponurus* Looss, 1907 (Digenea: Lecisthasteridae) in butterflyfishes (Perciformes: Chaetodontidae) from New Caledonia. *Systematic Parasitology*, **46**, 181-189.
- BRAY R. A., & CRIBB T. H., 2005. Two new hemiurine species (Digenea: Hemiuridae) from *Spratelloides robustus* Ogilby (Clupeiformes: Clupeidae) off south-western Australia and records of *Parahemiurus merus* (Linton, 1910) from Australian and New Caledonian waters. *Systematic Parasitology*, **60**, 197-203.
- CRIBB T. H., PICHELIN S., DUFOUR V., BRAY R. A., CHAUVET C., FALIEUX E., GALZIN R., LO C. M., LO-YAT A., MORAND S., RIGBY M. C. & SASAL P., 2000. Parasites of recruiting coral reef fish larvae in New Caledonia. *International Journal for Parasitology*, **30**, 1445-1451.
- DURIO W. O. & MANTER H. W., 1968a. Some digenetic trematodes of marine fishes of New Caledonia. Part I. Bucephalidae, Monorchiiidae, and some smaller families. *Proceedings of the Helminthological Society of Washington*, **35**, 143-153.
- DURIO W. O. & MANTER H. W., 1968b. Some digenetic trematodes of marine fishes of New Caledonia. Part II. Opcoelidae and Lepocreadiidae. *Journal of Parasitology*, **54**, 747-756.
- DURIO W. O. & MANTER H. W., 1969. Some digenetic trematodes of marine fishes of New Caledonia. Part III. Acanthocolpidae, Haploporidae, Gyliachaenidae, and Cryptogonimidae. *Journal of Parasitology*, **55**, 293-300.
- FROESE R. & PAULY D., (Eds) 2005 *FishBase*. World Wide Web electronic publication. [www.fishbase.org](http://www.fishbase.org).
- HALL K. A. & CRIBB T. H., 2004a. *Prychogyliachen*, a new genus of Gyliachaenidae (Platyhelminthes: Digenea) from siganid fishes of the Indo-West Pacific. *Invertebrate Systematics*, **18**, 607-625.
- HALL K. A., & CRIBB T. H., 2004b. Revision of *Affecauda* Hall & Chambers, 1999 (Digenea: Gyliachaenidae Fukui, 1929), including the description of two new species from fishes of the Indo-West Pacific. *Zootaxa*, **778**, 1-12.
- HAYWARD C. J., 1996., Revision of the monogenean genus *Polylabris* (Microcotylidae). *Invertebrate Taxonomy*, **10**, 995-1039.
- HINSINGER D. D. & JUSTINE J.-L., 2006a. *Pseudorhabdosynochus venus* n. sp. (Monogenea, Diplectanidae) from *Epinephelus howlandi* (Perciformes: Serranidae) off New Caledonia. *Systematic Parasitology*, **63**, 155-160.
- HINSINGER D. D. & JUSTINE J.-L., 2006b. The "*Pseudorhabdosynochus cupatus* group" (Monogenea, Diplectanidae) in *Epinephelus fasciatus*, *E. howlandi*, *E. rivulatus* and *E. merra* (Perciformes: Serranidae) off New Caledonia, with descriptions of *Pseudorhabdosynochus cyathus* n. sp. and *P. calathus* n. sp. *Systematic Parasitology*, **64**, 69-90.
- JONES C. M., GRUTTER A. S. & CRIBB T. H., 2003. *Rhipidocotyle labroidei* n. sp. (Digenea: Bucephalidae) from *Labroides dimidiatus* (Valenciennes) (Labridae). *Zootaxa*, **327**:1-5.
- JOURNO C. & JUSTINE J.-L., 2006. *Laticola dae* n. sp. (Monogenea, Diplectanidae) from *Epinephelus maculatus* (Perciformes, Serranidae) off New Caledonia. *Systematic Parasitology*, **164**, 173-180.
- JUSTINE J.-L. & EUZET L., 2006. Diplectanids (Monogenea) parasite on gills of the coralgroupers *Plectropomus laevis* and *P. leopardus* (Perciformes, Serranidae) off New Caledonia, with the description of five new species and the erection of *Echinoplectanum* n. g. *Systematic Parasitology*, **64**, 147-172.
- JUSTINE J.-L., 2004. Three new species of *Huffmanella* Moravec, 1987 (Nematoda, Trichosomoididae) from the gills of marine fish off New Caledonia. *Systematic Parasitology*, **59**, 29-37.
- JUSTINE J.-L., 2005a. Species of *Pseudorhabdosynochus* Yamaguti, 1958 (Monogenea, Diplectanidae) from *Epinephelus fasciatus* and *E. merra* (Perciformes, Serranidae) off New Caledonia and other parts of the Indo-Pacific Ocean, with a comparison of measurements of specimens prepared with different methods, and a description of *P. caledonicus* n. sp. *Systematic Parasitology*, **62**, 1-37.
- JUSTINE J.-L., 2005b. *Pseudorhabdosynochus hirundineus* n. sp. (Monogenea, Diplectanidae) from *Variola louti* (Perciformes, Serranidae) off New Caledonia. *Systematic Parasitology*, **62**, 39-45.
- JUSTINE J.-L., 2005c. *Huffmanella lata* n. sp. (Nematoda, Trichosomoididae, Huffmanellinae) from the shark *Carcharhinus amblyrhynchus* (Elasmobranchii, Carcharhinidae) off New Caledonia. *Systematic Parasitology*, **61**, 181-184.
- JUSTINE J.-L., 2006. Parasite biodiversity in a coral reef fish: twelve species of monogeneans on the gills of the grouper

- Epinephelus maculatus* (Perciformes: Serranidae) off New Caledonia, with a description of eight new species of *Pseudorhabdosynochus* (Monogenea: Diplectanidae). *Systematic Parasitology*, in press.
- LIM L. H. S., 1998. Diversity of monogeneans in Southeast Asia. *International Journal for Parasitology*, **17**, 1495-1515.
- MANter H. W., 1969. Some digenetic trematodes of marine fishes of New Caledonia. Part IV. Hemiuridae and summary. *Proceedings of the Helminthological Society of Washington*, **36**, 194-204.
- MARIE A. D. & JUSTINE J.-L., 2005. Monocotylids (Monogenea, Monopisthocotylea) from *Aetobatus* cf. *narinari* off New Caledonia, with a description of *Decacotyle elpora* n. sp. *Systematic Parasitology*, **60**, 175-185.
- MARIE A. D. & JUSTINE J.-L., 2006. *Thaumatocotyle pseudodasybatis* Hargis, 1955 (Monogenea, Monocotylidae) from *Aetobatus* cf. *narinari*, with a comparison of specimens from Australia, French Polynesia and New Caledonia. *Systematic Parasitology*, **64**, 47-55.
- MILLER T. L., & CRIBB T. H., 2005. A new genus and species of cryptogonimid from *Lutjanus* spp. (Pisces: Lutjanidae) on the Great Barrier Reef and New Caledonia. *Journal of Parasitology*, **91**, 922-924.
- MORAND S., CRIBB T. H., KULBICKI M., RIGBY M. C., CHAUVET C., DUFOUR V., FALIEUX E., GALZIN R., LO-C. M., LO-YAT A., PICHELIN S. & SASAL P., 2000. Endoparasite species richness of New Caledonian butterfly fishes: host density and diet matter. *Parasitology*, **121**, 65-73.
- MORAVEC F., & JUSTINE J.-L., 2005. Two anisakid nematodes from marine fishes off New Caledonia, including *Raphidascaris (Ichthyascaris) nemipteri* n. sp. from *Nemipterus furcosus*. *Systematic Parasitology*, **62**, 101-110.
- MORAVEC F., & JUSTINE J.-L., 2005. Two species of *Philometra* (Nematoda, Philometridae) from serranid fishes off New Caledonia. *Acta Parasitologica*, **50**, 323-331.
- MORAVEC F., & JUSTINE J.-L., 2006a. Three nematode species from elasmobranchs off New Caledonia. *Systematic Parasitology*, **64**, 131-145.
- MORAVEC F., & JUSTINE J.-L., WÜRTZ J., TARASCHEWSKI H. & SASAL, P., 2006. *Procamallanus (Procamallanus) pacificus* n. sp. (Nematoda: Camallanidae) from Pacific eels (*Anguilla* spp.). *Journal of Parasitology*, **92**, 130-137
- NOLAN M. J., & CRIBB T. H., 2006. *Cardicola* Short, 1953 and *Braya* n. gen. (Digenea: Sanguinicolidae) from five families of tropical Indo-Pacific fishes. *Zootaxa*, **1265**, 1-80.
- PALM, H. W., & BEVERIDGE, I. 2002. Tentaculicid cestodes of the order Trypanorhyncha (Platyhelminthes) from the Australian Region. *Records of the South Australian Museum*, **35**, 49-78.
- PETTER A. J. & LE BEL J., 1992. Two new species in the genus *Cucullanus* (Nematoda - Cucullanidae) from the Australian Region. *Mémoires do Instituto Oswaldo Cruz, Rio de Janeiro*, **87** suppl. I, 201-206.
- PLAISANCE L. & KRITSKY D. C., 2004. Dactylogyrids (Platyhelminthes: Monogeneoidea) parasitizing butterfly fishes (Teleostei: Chaetodontidae) from the coral reefs of Palau, Moorea, Wallis, New Caledonia, and Australia: species of *Euryhaliotrematoides* n. gen. and *Aliatrema* n. gen. *Journal of Parasitology*, **90**, 328-341.
- PLAISANCE L., BOUAMER S. & MORAND S., 2004. Description and redescription of *Haliotrema* species (Monogeneoidea: Poloyonchoinea [sic]: Dactylogyridae) parasitizing butterfly fishes (Teleostei: Chaetodontidae) in the Indo-West Pacific ocean. *Parasitology Research*, **93**, 598-604.
- RIGBY M. C., HOLMES J. C., CRIBB T. H. & MORAND S., 1997. Patterns of species diversity in the gastrointestinal helminths of a coral reef fish, *Epinephelus merra* (Serranidae), from French Polynesia and the South Pacific Ocean. *Canadian Journal of Zoology*, **75**, 1818-1827.
- ROHDE K., ROUBAL F. & HEWITT G. C., 1980. Ectoparasitic Monogenea, Digenea, and Copepoda from the gills of some marine fishes of New Caledonia and New Zealand. *New Zealand Journal of Marine & Freshwater Research*, **14**, 1-13.
- WHITTINGTON I. D., 1998. Diversity "down under": monogeneans in the Antipodes (Australia) with a prediction of monogenean biodiversity worldwide. *International Journal for Parasitology*, **28**, 1481-1493.
- YOUNG P. C., 1967. Some species of the genus *Tetrancistrum* Goto and Kikuchi, 1917 (Monogeneoidea: Dactylogyridae). *Journal of Parasitology*, **53**, 1016-1022.

## Parasite-host list

### MONOGENEA MONOPISTHOCOTYLEA

(alphabetical order of families and species)

#### ANCYROCEPHALIDAE

##### *Aliatrema cribbi* Plaisance & Kritsky 2004

*Chaetodon auriga*

*Chaetodon vagabundus*

*Heniochus chrysostomus*

Plaisance & Kritsky 2004

Plaisance & Kritsky 2004

Plaisance & Kritsky 2004

<b><i>Euryhaliotrematoides annulicirrus</i> (Yamaguti, 1968) Plaisance &amp; Kritsky 2004</b>	
<i>Chaetodon auriga</i>	Plaisance & Kritsky 2004
<i>Chaetodon vagabundus</i>	Plaisance & Kritsky 2004
<b><i>Euryhaliotrematoides aspitis</i> Plaisance &amp; Kritsky 2004</b>	
<i>Chaetodon vagabundus</i>	Plaisance & Kritsky 2004
<b><i>Euryhaliotrematoides grandis</i> (Mizelle &amp; Kritsky, 1969) Plaisance &amp; Kritsky 2004</b>	
<i>Chaetodon auriga</i>	Plaisance & Kritsky 2004
<i>Chaetodon vagabundus</i>	Plaisance & Kritsky 2004
<b><i>Euryhaliotrematoides microphallus</i> (Yamaguti, 1968) Plaisance &amp; Kritsky 2004</b>	
<i>Heniochus chrysostomus</i>	Plaisance & Kritsky 2004
<b><i>Euryhaliotrematoides pirulum</i> Plaisance &amp; Kritsky 2004</b>	
<i>Chaetodon auriga</i>	Plaisance & Kritsky 2004
<b><i>Haliotrema aurigae</i> (Yamaguti, 1968) Plaisance, Bouamer &amp; Morand, 2004</b>	
<i>Chaetodon auriga</i>	Plaisance <i>et al.</i> 2004
<i>Chaetodon citrinellus</i>	Plaisance <i>et al.</i> 2004
<i>Chaetodon vagabundus</i>	Plaisance <i>et al.</i> 2004
<i>Heniochus chrysostomus</i>	Plaisance <i>et al.</i> 2004
<b><i>Haliotrema epinepheli</i> Young, 1969</b>	
<i>Epinephelus maculatus</i>	Justine, 2006
<i>Variola albimarginata</i>	Justine, 2005b
<i>Variola louti</i>	Justine, 2005b
<b><i>Haliotrema</i> sp.</b>	
<i>Epinephelus maculatus</i>	Justine, 2006
<b><i>Tetrancistrum nebulosi</i></b>	
<i>Siganus fuscescens</i>	Young, 1967
<i>Siganus canaliculatus</i>	Young, 1967
<i>Siganus</i> sp.	Young, 1967
<b>CAPSALIDAE</b>	
<b>Capsalidae, immature</b>	
<i>Sphyaena</i> sp. (recruiting larva)	Cribb <i>et al.</i> , 2000
<b><i>Benedenia</i> cf. <i>epinepheli</i> (Yamaguti, 1937)</b>	
<i>Epinephelus fasciatus</i>	Justine, 2005a
<b><i>Benedenia</i> sp.</b>	
<i>Epinephelus howlandi</i>	Hinsinger & Justine, 2006b
<b>Trochopodinae Gen. sp.</b>	
<i>Plectropomus leopardus</i>	Justine & Euzet, 2006
<b>DIPLECTANIDAE</b>	
<b><i>Echinoplectanum chauvetorum</i> Justine &amp; Euzet, 2006</b>	
<i>Plectropomus laevis</i>	Justine & Euzet, 2006
<b><i>Echinoplectanum laeve</i> Justine &amp; Euzet, 2006</b>	
<i>Plectropomus laevis</i>	Justine & Euzet, 2006
<b><i>Echinoplectanum leopardi</i> Justine &amp; Euzet, 2006</b>	
<i>Plectropomus leopardus</i>	Justine & Euzet, 2006
<b><i>Echinoplectanum pudicum</i> Justine &amp; Euzet, 2006</b>	
<i>Plectropomus leopardus</i>	Justine & Euzet, 2006
<b><i>Echinoplectanum rarum</i> Justine &amp; Euzet, 2006</b>	
<i>Plectropomus leopardus</i>	Justine & Euzet, 2006
<b><i>Laticola dae</i> Journo &amp; Justine, 2006</b>	
<i>Epinephelus maculatus</i>	Journo & Justine, 2006
<b><i>Pseudorhabdosynochus auitoe</i> Justine, 2006</b>	
<i>Epinephelus maculatus</i>	Justine, 2006
<b><i>Pseudorhabdosynochus buitoe</i> Justine, 2006</b>	
<i>Epinephelus maculatus</i>	Justine, 2006
<b><i>Pseudorhabdosynochus calathus</i> Hinsinger &amp; Justine, 2006</b>	
<i>Epinephelus rivulatus</i>	Hinsinger & Justine, 2006b

- Pseudorhabdosynochus caledonicus* Justine, 2005**  
*Epinephelus fasciatus* Justine, 2005a; Hinsinger & Justine, 2006b
- Pseudorhabdosynochus cuitoe* Justine, 2006**  
*Epinephelus maculatus* Justine, 2006
- Pseudorhabdosynochus cupatus* (Young, 1969) Kritsky & Beverley-Burton, 1986**  
*Epinephelus fasciatus* Justine, 2005a; Hinsinger & Justine, 2006b
- Pseudorhabdosynochus cyathus* Hinsinger & Justine, 2006**  
*Epinephelus howlandi* Hinsinger & Justine, 2006b
- Pseudorhabdosynochus duitoe* Justine, 2006**  
*Epinephelus maculatus* Justine, 2006
- Pseudorhabdosynochus euitoe* Justine, 2006**  
*Epinephelus maculatus* Justine, 2006
- Pseudorhabdosynochus fuitoe* Justine, 2006**  
*Epinephelus maculatus* Justine, 2006
- Pseudorhabdosynochus guitoe* Justine, 2006**  
*Epinephelus maculatus* Justine, 2006
- Pseudorhabdosynochus hirundineus* Justine, 2005**  
*Variola louti* Justine, 2005b
- Pseudorhabdosynochus melanesiensis* (Laird, 1958) Kritsky & Beverley-Burton, 1986**  
*Epinephelus merra* Justine, 2005a; Hinsinger & Justine, 2006b
- Pseudorhabdosynochus huitoe* Justine, 2006**  
*Epinephelus maculatus* Justine, 2006
- Pseudorhabdosynochus venus* Hinsinger & Justine, 2006**  
*Epinephelus howlandi* Hinsinger & Justine, 2006a
- Pseudorhabdosynochus* cf. *coioidesis* Bu, Leong, Wong, Woo & Foo, 1999**  
*Epinephelus merra* Hinsinger & Justine, 2006b
- MONOCOTYLIDAE**
- Decacotyle octona* (Young, 1967) Chisholm & Whittington, 1998**  
*Aetobatus* cf. *narinari* Marie & Justine, 2005
- Decacotyle elpora* Marie & Justine, 2005**  
*Aetobatus* cf. *narinari* Marie & Justine, 2005
- Clemacotyle australis* Young, 1967**  
*Aetobatus* cf. *narinari* Marie & Justine, 2005
- Thaumatocotyle pseudodasybatis* Hargis, 1955**  
*Aetobatus* cf. *narinari* Marie & Justine, 2005, 2006
- MONOGENEA POLYOPISTHOCOTYLEA**  
(alphabetical order of species)
- Allopseudaxine* sp.**  
*Katsuwonus pelamis* Rohde, Roubal & Hewitt, 1980
- Allopseudaxinoides vagans* (Ishii, 1936) Yamaguti, 1968**  
*Katsuwonus pelamis* Rohde, Roubal & Hewitt, 1980
- Neothoracocotyle acanthocybii* (Meserve, 1938) Hargis, 1956**  
*Acanthocybium solandri* Rohde, Roubal & Hewitt, 1980
- Polylabris sillaginae* (Woolcock, 1936) Dillon, Hargis & Hargis, 1983**  
*Sillago sihama* Hayward, 1996
- DIGENEA**  
(alphabetical order of families and species)
- ACANTHOCOLPIDAE**
- Stephanostomum japonocasum* Durio & Manter, 1969**  
*Epinephelus* sp. "Red Cod" Durio & Manter, 1969  
Serranidae "unidentified serranid" Durio & Manter, 1969

<b><i>Stephanostomum casum</i> (Linton, 1910) McFarlane, 1934</b>	
<i>Lutjanus argentimaculatus</i>	Durio & Manter, 1969
<b>BIVESICULIDAE</b>	
<b><i>Bivesiculoides posterotestis</i> Durio &amp; Manter, 1968</b>	
Myctophidae "pretre" (? <i>Atherinomorus lacunosus</i> ?)	Durio & Manter, 1968a
<b>BUCEPHALIDAE</b>	
<b><i>Myorhynchus pritchardae</i> Durio &amp; Manter, 1968</b>	
Serranidae ("leche"/ loche)	Durio & Manter, 1968a
<b><i>Neidhartia coronata</i> Durio &amp; Manter, 1968</b>	
<i>Epinephelus</i> sp.	Durio & Manter, 1968a
<b><i>Prosorhynchus freitasi</i> Nagaty, 1937</b>	
<i>Epinephelus</i> sp.	Durio & Manter, 1968a
<b><i>Prosorhynchus longisaccatus</i> Durio &amp; Manter, 1968</b>	
Serranidae ("leche"/ loche)	Durio & Manter, 1968a
<b><i>Prosorhynchus serrani</i> Durio &amp; Manter, 1968</b>	
<i>Variola louti</i>	Durio & Manter, 1968a
<b><i>Rhipidocotyle</i> sp.</b>	
<i>Labroides bicolor</i>	Jones, Grutter & Cribb, 2003
<i>Labroides dimidiatus</i>	Jones, Grutter & Cribb, 2003, 2004
<b>CRYPTOGONIMIDAE</b>	
<b><i>Lobosorchis tibaldiae</i> Miller &amp; Cribb, 2005</b>	
<i>Lutjanus fulviflamma</i>	Miller & Cribb, 2005
<b><i>Paracryptogonimus catalae</i> Durio &amp; Manter, 1969</b>	
<i>Lutjanus bohar</i> ? ("anglais")	Durio & Manter, 1969
<b><i>Paracryptogonimus longitestis</i> Durio &amp; Manter, 1969</b>	
<i>Lutjanus bohar</i> ? ("anglais")	Durio & Manter, 1969
<b><i>Paracryptogonimus provitellosus</i> Durio &amp; Manter, 1969</b>	
<i>Lutjanus fulvus</i>	Durio & Manter, 1969
<b><i>Paracryptogonimus saccatus</i> Manter, 1963</b>	
<i>Siganus</i> sp.	Durio & Manter, 1969
<b><i>Paracryptogonimus testitactus</i> Durio &amp; Manter, 1969</b>	
<i>Lutjanus bohar</i> ? ("anglais")	Durio & Manter, 1969
<b><i>Siphoderina paracatalae</i> Durio &amp; Manter, 1969</b>	
<i>Lutjanus bohar</i> ? ("anglais")	Durio & Manter, 1969
<b>DIDYMOZOIDAE</b>	
<b>Didymozoidae Larva sp. A</b>	
<i>Apogon coccineus</i> (recruiting larvae)	Cribb <i>et al.</i> , 2000
Bleniidae sp (recruiting larvae)	Cribb <i>et al.</i> , 2000
<i>Pseudogramma</i> sp. (recruiting larvae)	Cribb <i>et al.</i> , 2000
Scorpaenidae Gen. sp. (recruiting larvae)	Cribb <i>et al.</i> , 2000
Synodontidae Gen. sp. (recruiting larvae)	Cribb <i>et al.</i> , 2000
<b>Didymozoidae Larva sp. B</b>	
<i>Apogon coccineus</i> (recruiting larvae)	Cribb <i>et al.</i> , 2000
<i>Bothus pantherinus</i> (recruiting larvae)	Cribb <i>et al.</i> , 2000
<b>Didymozoidae Larva sp. C</b>	
Synodontidae Gen. sp. 1 (recruiting larvae)	Cribb <i>et al.</i> , 2000
<b>Didymozoidae Larva sp. D</b>	
Labridae Gen. sp. (recruiting larvae)	Cribb <i>et al.</i> , 2000
<i>Thalassoma</i> sp. (recruiting larvae)	Cribb <i>et al.</i> , 2000
<b>Didymozoidae Larva sp. E</b>	
<i>Apogon coccineus</i> (recruiting larvae)	Cribb <i>et al.</i> , 2000
<b>Didymozoidae Larva sp. F</b>	
<i>Apogon coccineus</i> (recruiting larvae)	Cribb <i>et al.</i> , 2000
<b>Larva sp. G</b>	
Labridae Gen. sp. (recruiting larvae)	Cribb <i>et al.</i> , 2000

<i>Thalassoma</i> sp. (recruiting larvae)	Cribb <i>et al.</i> , 2000
<b>FELLODISTOMATIDAE</b>	
<b><i>Tergestia clonacantha</i> Manter, 1963</b>	
<i>Hemiramphus</i> sp.	Durio & Manter, 1968a
<b>GYLIAUCHENIDAE</b>	
<b><i>Affecauda salacia</i> Hall &amp; Cribb, 2004</b>	
<i>Zebrasoma veliferum</i>	Hall & Cribb, 2004b
<b><i>GyLIAUCHEN papillatus</i> (Goto &amp; Matsudaira, 1918) Goto, 1919</b>	
<i>Siganus</i> sp.	Durio & Manter, 1969
<b><i>PtychogyliAUCHEN thistilbardi</i> Hall &amp; Cribb, 2004</b>	
<i>Siganus argenteus</i>	Hall & Cribb, 2004a
<i>Siganus canaliculatus</i>	Hall & Cribb, 2004a
<i>Siganus corallinus</i>	Hall & Cribb, 2004a
<i>Siganus doliatus</i>	Hall & Cribb, 2004a
<i>Siganus spinus</i>	Hall & Cribb, 2004a
<b>HAPLOPORIDAE</b>	
<b><i>Atractotrema sigani</i> Durio &amp; Manter, 1969</b>	
<i>Siganus</i> sp.	Durio & Manter, 1969
<b><i>Hapladena tanyorchis</i> Manter &amp; Pritchard, 1961</b>	
<i>Naso</i> sp. "unicorn fish"	Durio & Manter, 1969
<b><i>Isorchis parvus</i> Durio &amp; Manter, 1969</b>	
<i>Chanos chanos</i>	Durio & Manter, 1969
<b>HAPLOSPLANCHNIDAE</b>	
<b><i>Hymenocotta mulli</i> Manter, 1961</b>	
"Mullet" Mugilidae	Durio & Manter, 1968a
<b>HEMIURIDAE</b>	
<b><i>Dichadena obesa</i> (Manter, 1961) Manter, 1969</b>	
<i>Strongylura leiura</i> ?	Manter, 1969
<b><i>Erilepturus tiegsi</i> Woolcock, 1935</b>	
<i>Epinephelus</i> sp.	Manter, 1969
Serranidae "mottled grouper"	Manter, 1969
<i>Epinephelus cyanopodus</i> ? "loche bleue"	Manter, 1969
<b>Hemiuridae (immature unidentifiable)</b>	
Bleniidae sp (recruiting larvae)	Cribb <i>et al.</i> , 2000
<b><i>Ectenurus</i> sp.</b>	
<i>Pseudogramma</i> sp. (recruiting larvae)	Cribb <i>et al.</i> , 2000
Synodontidae Gen. sp. 2 (recruiting larvae)	Cribb <i>et al.</i> , 2000
<b><i>Erilepturus</i> sp. immature</b>	
Synodontidae Gen. sp. 1 (recruiting larvae)	Cribb <i>et al.</i> , 2000
<b><i>Hysterolecitha sigani</i> Manter, 1969</b>	
<i>Siganus</i> sp.	Manter, 1969
<b><i>Hysterolecithoides frontilatus</i> (Manter, 1969) Yamaguti, 1971</b>	
<i>Siganus doliatus</i>	Bray & Cribb, 2000a
<b><i>Lecithaster testilobatus</i> Manter, 1969</b>	
<i>Scarus</i> (= <i>Callyodon</i> ) sp.	Manter, 1969
<b><i>Lecithochirium magnaporum</i> Manter, 1940</b>	
<i>Lethrinus miniatus</i>	Manter, 1969
<i>Epinephelus</i> sp.	Manter, 1969
<b><i>Lecithochirium polynemi</i> Chauhan, 1945</b>	
<i>Lutjanus fulvus</i>	Manter, 1969
<b><i>Lecithocladium aegyptensis</i> Fischtal &amp; Kuntz, 1963</b>	
Scombridae "mackerel"	Manter, 1969
<b><i>Parahemiurus merus</i> (Linton, 1910)</b>	
<i>Priacanthus hamrur</i>	Bray & Cribb, 2005

<b><i>Quadrifoliovarium pritchardae</i> Yamaguti, 1965</b>	
<i>Naso</i> sp. "unicorn fish"	Manter, 1969
<b><i>Theletrum frontilatum</i> Manter, 1969</b>	
<i>Siganus</i> sp.	Manter, 1969
<b>LECITHASTERIDAE</b>	
<b><i>Aponurus chelebesoi</i> Bray &amp; Cribb, 2000</b>	
<i>Chaetodon auriga</i>	Bray & Cribb, 2000b
<i>Chaetodon citrinellus</i>	Bray & Cribb, 2000b
<i>Chaetodon ephippium</i>	Bray & Cribb, 2000b
<i>Chaetodon flavirostris</i>	Bray & Cribb, 2000b
<i>Chaetodon lineolatus</i>	Bray & Cribb, 2000b
<i>Chaetodon melannotus</i>	Bray & Cribb, 2000b
<i>Chaetodon mertensii</i>	Bray & Cribb, 2000b
<i>Chaetodon pelewensis</i>	Bray & Cribb, 2000b
<i>Coradion altivelis</i>	Bray & Cribb, 2000b
<i>Forcipiger flavissimus</i>	Bray & Cribb, 2000b
<i>Heniochus acuminatus</i>	Bray & Cribb, 2000b
<i>Heniochus chrysostomus</i>	Bray & Cribb, 2000b
<i>Heniochus monoceros</i>	Bray & Cribb, 2000b
<i>Siganus doliatus</i>	Bray & Cribb, 2000b
<b>LEPOCREADIIDAE</b>	
<b><i>Holorchis plectorhynchi</i> Durio &amp; Manter, 1968</b>	
<i>Plectorhinchus goldmani</i>	Durio & Manter, 1968b
<i>Lethrinus miniatus</i>	Durio & Manter, 1968b
<b><i>Intusatrium robustum</i> Durio &amp; Manter, 1968</b>	
<i>Bodianus perditio</i>	Durio & Manter, 1968b
<b><i>Intusatrium secundum</i> Durio &amp; Manter, 1968</b>	
Scaridae? "Brown-blotched parrot fish"	Durio & Manter, 1968b
<b><i>Neolepidapedon dollfusi</i> Durio &amp; Manter, 1968</b>	
<i>Epinephelus</i> sp. "Red Cod"	Durio & Manter, 1968b
<i>Epinephelus</i> sp. "Spotted Grouper"	Durio & Manter, 1968b
<b><i>Lepidapedoides angustus</i> Bray, Cribb &amp; Barker, 1996 (as <i>L. "kerapu"</i>)</b>	
<i>Epinephelus merra</i>	Rigby <i>et al.</i> , 1997
<b>MICROSCAPHIDIIDAE</b>	
<b><i>Hexangium sigani</i> Goto &amp; Ozaki, 1929</b>	
<i>Siganus</i> sp.	Durio & Manter, 1968a
<i>Lutjanus fulvus</i>	Durio & Manter, 1968a
<b>MONORCHIIDAE</b>	
<b><i>Hysterorchis vitellosus</i> Durio &amp; Manter, 1968</b>	
<i>Plectorhinchus</i> sp.	Durio & Manter, 1968a
<b><i>Lasiotocus longitestis</i> Durio &amp; Manter, 1968</b>	
<i>Plectorhinchus</i> sp. ("loche castex")	Durio & Manter, 1968a
<b>OPECOELIDAE</b>	
<b><i>Allopodocotyle serrani</i> (Yamaguti, 1952) Pritchard, 1966</b>	
Serranidae ("leche"/ loche)	Durio & Manter, 1968b
<b><i>Hamacreadium diacopae</i> Nagaty &amp; Abdel Aal, 1962</b>	
<i>Lethrinus nebulosus</i> ? ("bec de cane")	Durio & Manter, 1968b
<b><i>Hamacreadium mutabile</i> Linton, 1910</b>	
<i>Lutjanus bohar</i> ? ("anglais")	Durio & Manter, 1968b
<i>Lutjanus amabilis</i>	Durio & Manter, 1968b
<i>Lethrinus miniatus</i>	Durio & Manter, 1968b
<b><i>Choanostoma secundum</i> Durio &amp; Manter, 1968</b>	
<i>Plectorhinchus</i> sp.	Durio & Manter, 1968b
<i>Lutjanus vitta</i>	Durio & Manter, 1968b



<b><i>Helicometra fasciata</i> (Rudolphi, 1819) Odhner, 1902</b>	
<i>Epinephelus</i> sp. "Red Cod"	Durio & Manter, 1968b
<i>Epinephelus merra</i>	Rigby <i>et al.</i> , 1997
<b><i>Orthodena tropica</i> Durio &amp; Manter, 1968</b>	
<i>Lethrinus nebulosus</i> ? ("bec de cane")	Durio & Manter, 1968b
<b><i>Pacificreadium serrani</i> Durio &amp; Manter, 1968</b>	
<i>Epinephelus</i> sp.	Durio & Manter, 1968b
<b><i>Pseudoplagioporus interruptus</i> Durio &amp; Manter, 1968</b>	
<i>Lethrinus nebulosus</i> ? ("bec de cane")	Durio & Manter, 1968b
<b><i>Pseudoplagioporus lethrini</i> Yamaguti, 1938</b>	
<i>Lethrinus nebulosus</i> ? ("bec de cane")	Durio & Manter, 1968b
<b>SANGUINICOLIDAE</b>	
<b><i>Cardicola chaetodontis</i> Yamaguti, 1970</b>	
<i>Chaetodon lineolatus</i>	Nolan & Cribb, 2006
<b>SYNCOELIIDAE</b>	
<b><i>Syncoelium filiferum</i> (Sars, 1885) Odhner, 1911</b>	
<i>Katsuwonus pelamis</i>	Rohde, Roubal & Hewitt, 1980
<b>ZOOGONIDAE</b>	
<b><i>Diphtherostomum tropicum</i> Durio &amp; Manter, 1968</b>	
<i>Lethrinus nebulosus</i> ?	Durio & Manter, 1968a
<b>CESTODA</b>	
<b><i>Acanthobothrium aetiobatis</i></b>	
<i>Aetobatus narinari</i>	Baer & Euzet 1962
<b><i>Nybelinia aequidentata</i></b>	
<i>Dendrochirus zebra</i>	Palm & Beveridge, 2002
<b><i>Scolex polymorphus</i> (= tetraphyllidean metacestodes)</b>	
<i>Epinephelus merra</i>	Rigby <i>et al.</i> , 1997
<b>Trypanorhyncha larvae</b>	
<i>Epinephelus merra</i>	Rigby <i>et al.</i> , 1997
<b>Metacestode</b>	
Synodontidae Gen. sp. 3 (recruiting larvae)	Cribb <i>et al.</i> , 2000
<b>Tetraphyllidea Metacestode</b>	
<i>Thalassoma</i> sp. (recruiting larvae)	Cribb <i>et al.</i> , 2000
<b>NEMATODA</b>	
(alphabetical order of families and species)	
<b>ANISAKIDAE</b>	
<b><i>Raphidascaris (Ichtyiascaris) nemipteri</i> Moravec &amp; Justine, 2005</b>	
<i>Nemipterus furcosus</i>	Moravec & Justine, 2005
<b><i>Hysterothylacium cenaticum</i> (Bruce &amp; Cannon, 1989) Moravec &amp; Justine, 2005</b>	
<i>Tetrapturus audax</i>	Moravec & Justine, 2005
<b><i>Terranova scoliodontis</i> (Baylis, 1931) Johnston &amp; Mawson, 1945</b>	
<i>Galeocerdo cuvier</i>	Moravec & Justine, 2006a
<b>CAMALLANIDAE</b>	
<b><i>Procamallanus (Procamallanus) pacificus</i> Moravec, Justine, Würtz, Taraschewski &amp; Sasal, 2006</b>	
<i>Anguilla obscura</i>	Moravec <i>et al.</i> , 2006
<i>Anguilla reinhardtii</i>	Moravec <i>et al.</i> , 2006
<b>CUCULLANIDAE</b>	
<b><i>Cucullanus bourdini</i> Petter &amp; Le Bel, 1992</b>	
<i>Aprion virescens</i>	Petter & Le Bel, 1992
<i>Pristipomoides filamentosus</i>	Petter & Le Bel, 1992
<i>Pristipomoides flavipinnis</i>	Petter & Le Bel, 1992

**GNATHOSTOMATIDAE*****Echinocephalus sinensis* Ko, 1975***Aetobatus narinari*

Moravec &amp; Justine, 2006a

***Echinocephalus overstreeti* Deardoff & Ko, 1983***Taeniura meyeri*

Moravec &amp; Justine, 2006a

**PHILOMETRIDAE*****Philometra ocularis* Moravec, Ogawa, Suzuki, Miyazaki & Donai, 2002***Epinephelus coioides*

Moravec &amp; Justine, 2005

*Epinephelus cyanopodus*

Moravec &amp; Justine, 2005

*Epinephelus rivulatus*

Moravec &amp; Justine, 2005

*Variola louti*

Moravec &amp; Justine, 2005

***Philometra lateolabracis* (Yamaguti, 1935)***Epinephelus cyanopodus*

Moravec &amp; Justine, 2005

*Epinephelus fasciatus*

Moravec &amp; Justine, 2005

**TRICHOSOMOIDIDAE*****Huffmanella branchialis* Justine, 2004***Nemipterus furcosus*

Justine, 2004

***Huffmanella filamentosa* Justine, 2004***Gymnocranius grandoculis*

Justine, 2004

***Huffmanella lata* Justine, 2005***Carcharhinus amblyrhynchos*

Justine, 2005c

***Huffmanella ossicola* Justine, 2004***Bodianus loxozonus*

Justine, 2004

***Huffmanella* sp.***Pentapodus* sp.

Justine, 2004

**Host-parasite list****ELASMOBRANCHII**

(alphabetical order of families and species)

**CARCHARHINIDAE*****Carcharhinus amblyrhynchos* (Bleeker, 1856)**Nematoda *Huffmanella lata*

Justine, 2005c

***Galeocerdo cuvier* (Péron & Lesueur, 1822)**Nematoda *Terranova scoliodontis*

Moravec &amp; Justine, 2006a

**DASYATIDAE*****Taeniura meyeri* Müller & Henle, 1841**Nematoda *Echinocephalus overstreeti*

Moravec &amp; Justine, 2006a

**MYLIOBATIDAE*****Aetobatus narinari* (Euphrasen, 1790)**Cestoda *Acanthobothrium aetiobatis*

Baer &amp; Euzet 1962

Monopisthocotylea *Decacotyle octona*

Marie &amp; Justine, 2005

Monopisthocotylea *Decacotyle elpora*

Marie &amp; Justine, 2005

Monopisthocotylea *Clemacotyle australis*

Marie &amp; Justine, 2005

Monopisthocotylea *Thaumatocotyle pseudodasybatis*

Marie &amp; Justine, 2005, 2006

Nematoda *Echinocephalus sinensis*

Moravec &amp; Justine, 2006a

**ACTINOPTERYGII**

(alphabetical order of families and species)

**ACANTHURIDAE*****Naso* sp. "unicorn fish"**Digenea *Hapladena tanyorchis*

Durio &amp; Manter, 1969

Digenea *Quadrifoliovarium pritchardae*

Manter, 1969

<b><i>Zebrasoma veliferum</i> (Bloch, 1795)</b>	
Digenea <i>Affecauda salacia</i>	Hall & Cribb, 2004b
<b>ANGUILLIDAE</b>	
<b><i>Anguilla obscura</i> Günther, 1872</b>	
Nematoda <i>Procamallanus (Procamallanus) pacificus</i>	Moravec <i>et al.</i> , 2006
<b><i>Anguilla reinhardtii</i> Steindachner, 1867</b>	
Nematoda <i>Procamallanus (Procamallanus) pacificus</i>	Moravec <i>et al.</i> , 2006
<b>ANTENNARIIDAE</b>	
<b>Antennariidae sp. (recruiting larvae)</b>	
Digenea Hemiuridae (immature unidentifiable)	Cribb <i>et al.</i> , 2000
<b>APOGONIDAE</b>	
<b><i>Apogon angustatus</i> (Smith &amp; Radcliffe, 1911)? (recruiting larvae)</b>	
Digenea Didymozoidae larva B	Cribb <i>et al.</i> , 2000
<b><i>Apogon coccineus</i> Rüppell, 1838 (recruiting larvae)</b>	
Digenea Didymozoidae larva A	Cribb <i>et al.</i> , 2000
Digenea Didymozoidae larva B	Cribb <i>et al.</i> , 2000
Digenea Didymozoidae larva E	Cribb <i>et al.</i> , 2000
Digenea Didymozoidae larva F	Cribb <i>et al.</i> , 2000
<b>ATHERINIDAE</b>	
<b>Myctophidae “pretre” (? <i>Atherinomorus lacunosus</i> (Forster, 1801))</b>	
Digenea <i>Bivesiculoides posterotestis</i>	Durio & Manter, 1968a
<b>BELONIDAE</b>	
<b><i>Strongylura leiura</i> (Bleeker, 1850) syn. of <i>Tylosurus leiurus</i> (Bleeker, 1850) ?</b>	
Digenea <i>Dichadena obesa</i>	Manter, 1969
<b>BLENIIDAE</b>	
<b>Bleniidae Gen. sp. (recruiting larvae)</b>	
Digenea Didymozoidae larva A	Cribb <i>et al.</i> , 2000
Digenea Hemiuridae (immature unidentifiable)	Cribb <i>et al.</i> , 2000
<b><i>Petroscirtes</i> sp. (recruiting larvae)</b>	
Digenea Hemiuridae (immature unidentifiable)	Cribb <i>et al.</i> , 2000
Digenea <i>Lecithaster</i> sp. adult	Cribb <i>et al.</i> , 2000
<b>BOTHIDAE</b>	
<b><i>Bothus pantherinus</i> (Rüppell, 1830) (recruiting larvae)</b>	
Digenea Didymozoidae larva B	Cribb <i>et al.</i> , 2000
<b>CHAETODONTIDAE</b>	
<b><i>Heniochus acuminatus</i> (Linnaeus, 1758) “<i>Chaetodon acuminatus</i>”</b>	
Digenea <i>Aponurus chelebesoi</i>	Bray & Cribb, 2000b
<b><i>Chaetodon auriga</i> Forsskål, 1775</b>	
Digenea <i>Aponurus chelebesoi</i>	Bray & Cribb, 2000b
Monopisthocotylea <i>Haliotrema aurigae</i>	Plaisance <i>et al.</i> 2004
Monopisthocotylea <i>Aliatrema cribbi</i>	Plaisance & Kritsky 2004
Monopisthocotylea <i>Euryhaliotrematoides annulicirrus</i>	Plaisance & Kritsky 2004
Monopisthocotylea <i>Euryhaliotrematoides grandis</i>	Plaisance & Kritsky 2004
Monopisthocotylea <i>Euryhaliotrematoides pirulum</i>	Plaisance & Kritsky 2004
<b><i>Chaetodon citrinellus</i> Cuvier, 1831</b>	
Digenea <i>Aponurus chelebesoi</i>	Bray & Cribb, 2000b
Monopisthocotylea <i>Haliotrema aurigae</i>	Plaisance <i>et al.</i> 2004
Monopisthocotylea <i>Euryhaliotrematoides grandis</i>	Plaisance & Kritsky 2004
<b><i>Chaetodon ephippium</i> Cuvier, 1831</b>	
Digenea <i>Aponurus chelebesoi</i>	Bray & Cribb, 2000b
<b><i>Chaetodon flavirostris</i> Günther, 1874</b>	
Digenea <i>Aponurus chelebesoi</i>	Bray & Cribb, 2000b
<b><i>Chaetodon lineolatus</i> Cuvier, 1831</b>	
Digenea <i>Aponurus chelebesoi</i>	Bray & Cribb, 2000b
Digenea <i>Cardicola chaetodontis</i>	Nolan & Cribb, 2006

<b><i>Chaetodon melannotus</i> Bloch &amp; Schneider, 1801</b>	
Digenea <i>Aponurus chelebesoi</i>	Bray & Cribb, 2000b
<b><i>Chaetodon mertensii</i> Cuvier, 1831</b>	
Digenea <i>Aponurus chelebesoi</i>	Bray & Cribb, 2000b
<b><i>Chaetodon pelewensis</i> Kner, 1868</b>	
Digenea <i>Aponurus chelebesoi</i>	Bray & Cribb, 2000b
<b><i>Chaetodon vagabundus</i> Linnaeus, 1758</b>	
Monopisthocotylea <i>Haliotrema aurigae</i>	Plaisance <i>et al.</i> 2004
Monopisthocotylea <i>Aliatrema cribbi</i>	Plaisance & Kritsky 2004
Monopisthocotylea <i>Euryhaliotrematoides aspitis</i>	Plaisance & Kritsky 2004
Monopisthocotylea <i>Euryhaliotrematoides grandis</i>	Plaisance & Kritsky 2004
Monopisthocotylea <i>Euryhaliotrematoides annulicirrus</i>	Plaisance & Kritsky 2004
<b><i>Coradion altivelis</i> McCulloch, 1916</b>	
Digenea <i>Aponurus chelebesoi</i>	Bray & Cribb, 2000b
<b><i>Forcipiger flavissimus</i> Jordan &amp; McGregor, 1898</b>	
Digenea <i>Aponurus chelebesoi</i>	Bray & Cribb, 2000b
<b><i>Heniochus acuminatus</i> (Linnaeus, 1758)</b>	
Digenea <i>Aponurus chelebesoi</i>	Bray & Cribb, 2000b
<b><i>Heniochus chrysostomus</i> Cuvier, 1831</b>	
Digenea <i>Aponurus chelebesoi</i>	Bray & Cribb, 2000b
Monopisthocotylea <i>Haliotrema aurigae</i>	Plaisance <i>et al.</i> 2004
Monopisthocotylea <i>Aliatrema cribbi</i>	Plaisance & Kritsky 2004
Monopisthocotylea <i>Euryhaliotrematoides microphallus</i>	Plaisance & Kritsky 2004
<b><i>Heniochus monoceros</i> Cuvier, 1831</b>	
Digenea <i>Aponurus chelebesoi</i>	Bray & Cribb, 2000b
<b>CHANIDAE</b>	
<b><i>Chanos chanos</i> (Forsskål, 1775)</b>	
Digenea <i>Isorchis parvus</i>	Durio & Manter, 1969
<b>HAEMULIDAE</b>	
<b><i>Plectorhinchus</i> sp. ("loche castex")</b>	
Digenea <i>Lasiotocus longitestis</i>	Durio & Manter, 1968a
Digenea <i>Hysterorchis vitellosus</i>	Durio & Manter, 1968a
Digenea <i>Choanostoma secundum</i>	Durio & Manter, 1968b
<b><i>Plectorhinchus goldmani</i> (Bleeker, 1853)</b>	
Digenea <i>Holorchis plectorhynchi</i>	Durio & Manter, 1968b
<b>HEMIRAMPHIDAE</b>	
<b><i>Hemiramphus</i> sp.</b>	
Digenea <i>Tergestia clonacantha</i>	Durio & Manter, 1968a
<b>ISTIOPHORIDAE</b>	
<b><i>Tetrapturus audax</i> (Philippi, 1887)</b>	
Nematoda <i>Hysterothylacium cenaticum</i>	Moravec & Justine, 2005
<b>LABRIDAE</b>	
<b><i>Bodianus perditio</i> (Quoy &amp; Gaimard, 1834) as "<i>Lepidaplois perditio</i>"</b>	
Digenea <i>Intusatrium robustum</i>	Durio & Manter, 1968b
<b><i>Bodianus loxozonus</i> (Snyder, 1908)</b>	
Nematoda <i>Huffmanella ossicola</i>	Justine, 2004
<b>Labridae sp. (recruiting larvae)</b>	
Digenea Didymozoidae larva D	Cribb <i>et al.</i> , 2000
Digenea Didymozoidae larva G	Cribb <i>et al.</i> , 2000
<b><i>Labroides bicolor</i> Fowler &amp; Bean, 1928</b>	
Digenea <i>Rhipidocotyle</i> sp.	Jones, Grutter & Cribb, 2003
<b><i>Labroides dimidiatus</i> (Valenciennes, 1839)</b>	
Digenea <i>Rhipidocotyle</i> sp.	Jones, Grutter & Cribb, 2003, 2004
<b><i>Thalassoma</i> sp. Labridae (recruiting larvae)</b>	
Digenea Didymozoidae larva D	Cribb <i>et al.</i> , 2000

Digenea Didymozoidae larva G	Cribb <i>et al.</i> , 2000
Digenea Tetraphyllidea Metacestode	Cribb <i>et al.</i> , 2000
<b>LETHRINIDAE</b>	
<b><i>Gymnocranius grandoculis</i> (Valenciennes, 1830)</b>	
Nematoda <i>Huffmanella filamentosa</i>	Justine, 2004
<b><i>Lethrinus miniatus</i> (Forster, 1801)</b>	
Digenea <i>Hamacreadium mutabil</i>	Durio & Manter, 1968b
Digenea <i>Holorchis plectorhynchi</i>	Durio & Manter, 1968b
Digenea <i>Lecithochirium magnaporum</i>	Manter, 1969
<b><i>Lethrinus nebulosus</i> (Forsskål, 1775) ? (“bec de cane”)</b>	
Digenea <i>Diphtherostomum tropicum</i>	Durio & Manter, 1968a
Digenea <i>Hamacreadium diacopae</i>	Durio & Manter, 1968b
Digenea <i>Orthodena tropica</i>	Durio & Manter, 1968b
Digenea <i>Pseudoplagioporus lethrini</i>	Durio & Manter, 1968b
Digenea <i>Pseudoplagioporus interruptus</i>	Durio & Manter, 1968b
<b>LUTJANIDAE</b>	
<b><i>Aprion virescens</i> Valenciennes, 1830</b>	
Nematoda <i>Cucullanus bourdini</i>	Petter & Le Bel, 1992
<b><i>Lutjanus amabilis</i></b>	
Digenea <i>Hamacreadium mutabile</i>	Durio & Manter, 1968b
<b><i>Lutjanus argentimaculatus</i> (Forsskål, 1775)</b>	
Digenea <i>Stephanostomum casum</i>	Durio & Manter, 1969
<b><i>Lutjanus bohar</i> (Forsskål, 1775) ? (“anglais”)</b>	
Digenea <i>Hamacreadium mutabile</i>	Durio & Manter, 1968b
Digenea <i>Paracryptogonimus longitestis</i>	Durio & Manter, 1969
Digenea <i>Paracryptogonimus catalae</i>	Durio & Manter, 1969
Digenea <i>Paracryptogonimus testitactus</i>	Durio & Manter, 1969
Digenea <i>Siphoderina paracatalae</i>	Durio & Manter, 1969
<b><i>Lutjanus fulviflamma</i> (Forsskål, 1775)</b>	
Digenea <i>Lobosorchis tibaldiae</i>	Miller & Cribb, 2005
<b><i>Lutjanus fulvus</i> (Forster, 1801) (as <i>Lutjanus vaigiensis</i>, junior synonym)</b>	
Digenea <i>Hexangium sigani</i>	Durio & Manter, 1968a
Digenea <i>Paracryptogonimus provitellosus</i>	Durio & Manter, 1969
Digenea <i>Lecithochirium polynemi</i>	Manter, 1969
<b><i>Lutjanus vitta</i> (Quoy &amp; Gaimard, 1824)</b>	
Digenea <i>Choanostoma secundum</i>	Durio & Manter, 1968b
<b><i>Pristipomoides filamentosus</i> (Valenciennes, 1830)</b>	
Nematoda <i>Cucullanus bourdini</i>	Petter & Le Bel, 1992
<b><i>Pristipomoides flavipinnis</i> Shinohara, 1963</b>	
Nematoda <i>Cucullanus bourdini</i>	Petter & Le Bel, 1992
<b>MUGILIDAE</b>	
<b>Mugilidae</b>	
Digenea <i>Hymenocotta nulli</i>	Durio & Manter, 1968a
<b>NEMIPTERIDAE</b>	
<b><i>Nemipterus furcosus</i> (Valenciennes, 1830)</b>	
Nematoda <i>Huffmanella branchialis</i>	Justine, 2004
Nematoda <i>Raphidascaaris (Ichtyiascaaris) nemipteri</i>	Moravec & Justine, 2005
<b><i>Pentapodus</i> sp.</b>	
Nematoda <i>Huffmanella</i> sp.	Justine, 2004
<b>PRIACANTHIDAE</b>	
<b><i>Priacanthus hamrur</i> (Forsskål, 1775)</b>	
Digenea <i>Parahemiurus merus</i>	Bray & Cribb, 2005
<b>SCARIDAE</b>	
<b>Scaridae? “Brown-blotched parrot fish”</b>	
Digenea <i>Intusatrium secundum</i>	Durio & Manter, 1968b

- Scarus (= *Callyodon*) sp.**  
Digenea *Lecithaster testilobatus* Manter, 1969
- SCOMBRIDAE**
- Acanthocybium solandri* (Cuvier, 1832)**  
Polyopisthocotylea *Neothoracocotyle acanthocybii* Rohde, Roubal & Hewitt, 1980
- Katsuwonus pelamis* (Linnaeus, 1758)**  
Polyopisthocotylea *Alloposeudaxine* sp. Rohde, Roubal & Hewitt, 1980  
Polyopisthocotylea *Alloposeudaxinoides vagans* Rohde, Roubal & Hewitt, 1980  
Digenea *Syncoelium filiferum* Rohde, Roubal & Hewitt, 1980
- Scombridae “mackerel”**  
Digenea *Lecithocladium aegyptensis* Manter, 1969
- SCORPAENIDAE**
- Dendrochirus zebra* (Cuvier, 1829)**  
Cestoda *Nybelinia aequidentata* Palm & Beveridge, 2002
- Scorpaenidae Gen. sp. (recruiting larvae)**  
Digenea Didymozoidae larva A Cribb *et al.*, 2000
- SERRANIDAE**
- Epinephelus coioides* (Hamilton, 1822)**  
Nematoda *Philometra ocularis* Moravec & Justine, 2005
- Epinephelus cyanopodus* (Richardson, 1846)**  
Nematoda *Philometra ocularis* Moravec & Justine, 2005  
Nematoda *Philometra lateolabracis* Moravec & Justine, 2005
- Epinephelus cyanopodus* (Richardson, 1846) ? “loche bleue”**  
Digenea *Erilepturus tiegsi* Manter, 1969
- Epinephelus fasciatus* (Forsskål, 1775)**  
Monopisthocotylea *Pseudorhabdosynochus cupatus* Justine, 2005a, Hinsinger & Justine, 2006b  
Monopisthocotylea *Pseudorhabdosynochus caledonicus* Justine, 2005a, Hinsinger & Justine, 2006b  
Monopisthocotylea *Benedenia* cf. *epinepheli* Justine, 2005a  
Nematoda *Philometra lateolabracis* Moravec & Justine, 2005
- Epinephelus howlandi* (Günther, 1873)**  
Monopisthocotylea *Pseudorhabdosynochus venus* Hinsinger & Justine, 2006a  
Monopisthocotylea *Pseudorhabdosynochus cyathus* Hinsinger & Justine, 2006b  
Monopisthocotylea *Benedenia* sp. Hinsinger & Justine, 2006b
- Epinephelus maculatus* (Bloch, 1790)**  
Monopisthocotylea *Laticola dae* Journo & Justine, 2006  
Monopisthocotylea *Pseudorhabdosynochus auitoe* Justine, 2006  
Monopisthocotylea *Pseudorhabdosynochus buitoe* Justine, 2006  
Monopisthocotylea *Pseudorhabdosynochus cuitoe* Justine, 2006  
Monopisthocotylea *Pseudorhabdosynochus duitoe* Justine, 2006  
Monopisthocotylea *Pseudorhabdosynochus euitoe* Justine, 2006  
Monopisthocotylea *Pseudorhabdosynochus fuitoe* Justine, 2006  
Monopisthocotylea *Pseudorhabdosynochus guitoe* Justine, 2006  
Monopisthocotylea *Pseudorhabdosynochus huitoe* Justine, 2006  
Monopisthocotylea *Haliotrema epinepheli* Justine, 2006  
Monopisthocotylea *Haliotrema* sp. Justine, 2006
- Epinephelus merra* Bloch, 1793**  
Digenea *Helicometra fasciata* Rigby *et al.*, 1997  
Digenea *Lepidapedoides angustus* Rigby *et al.*, 1997  
Cestoda *Scolex polymorphus* Rigby *et al.*, 1997  
Cestoda Trypanorhyncha larvae Rigby *et al.*, 1997  
Monopisthocotylea *Pseudorhabdosynochus melanesiensis* Justine, 2005a, Hinsinger & Justine, 2006b  
Monopisthocotylea *Pseudorhabdosynochus* cf. *coioidesis* Hinsinger & Justine, 2006b
- Epinephelus rivulatus* (Valenciennes, 1830)**  
Monopisthocotylea *Pseudorhabdosynochus calathus* Hinsinger & Justine, 2006b  
Nematoda *Philometra ocularis* Moravec & Justine, 2005
- Epinephelus* sp.**  
Digenea *Neidhartia coronata* Durio & Manter, 1968a

Digenea <i>Prosorhynchus freitasi</i>	Durio & Manter, 1968a
Digenea <i>Pacificreadium serrani</i>	Durio & Manter, 1968b
Digenea <i>Lecithochirium magnaporum</i>	Manter, 1969
Digenea <i>Erilepturus tiegsi</i>	Manter, 1969
<b><i>Epinephelus</i> sp. “Red Cod”</b>	
Digenea <i>Helicometra fasciata</i>	Durio & Manter, 1968b
Digenea <i>Neolepidapedon dollfusi</i>	Durio & Manter, 1968b
Digenea <i>Stephanostomum japonocasum</i>	Durio & Manter, 1969
<b><i>Epinephelus</i> sp. “Spotted Grouper”</b>	
Digenea <i>Neolepidapedon dollfusi</i>	Durio & Manter, 1968b
<b><i>Plectropomus laevis</i> (Lacépède, 1801)</b>	
Monopisthocotylea <i>Echinoplectanum chauvetorum</i>	Justine & Euzet, 2006
Monopisthocotylea <i>Echinoplectanum laeve</i>	Justine & Euzet, 2006
<b><i>Plectropomus leopardus</i> (Lacépède, 1802)</b>	
Monopisthocotylea <i>Echinoplectanum leopardi</i>	Justine & Euzet, 2006
Monopisthocotylea <i>Echinoplectanum pudicum</i>	Justine & Euzet, 2006
Monopisthocotylea <i>Echinoplectanum rarum</i>	Justine & Euzet, 2006
<b><i>Pseudogramma</i> sp. (recruiting larvae)</b>	
Digenea Didymozoidae larva A	Cribb <i>et al.</i> , 2000
Digenea Hemiuroidae <i>Ectenurus</i> sp. adult	Cribb <i>et al.</i> , 2000
<b>Serranidae (“leche”/ loche) several species?</b>	
Digenea <i>Myorhynchus pritchardae</i>	Durio & Manter, 1968a
Digenea <i>Prosorhynchus longisaccatus</i>	Durio & Manter, 1968a
Digenea <i>Allopodocotyle serrani</i>	Durio & Manter, 1968b
<b>Serranidae “unidentified serranid”</b>	
Digenea <i>Stephanostomum japonocasum</i>	Durio & Manter, 1969
<b>Serranidae “mottled grouper”</b>	
Digenea <i>Erilepturus tiegsi</i>	Manter, 1969
<b><i>Variola albimarginata</i> Baissac, 1953</b>	
Monopisthocotylea <i>Haliotrema epinepheli</i>	Justine, 2005b
<b><i>Variola louti</i> (Forsskål, 1775)</b>	
Digenea <i>Prosorhynchus serrani</i>	Durio & Manter, 1968a
Monopisthocotylea <i>Pseudorhabdosynochus hirundineus</i>	Justine, 2005b
Monopisthocotylea <i>Haliotrema epinepheli</i>	Justine, 2005b
Nematoda <i>Philometra ocularis</i>	Moravec & Justine, 2005
<b>SIGANIDAE</b>	
<b><i>Siganus argenteus</i> (Quoy &amp; Gaimard, 1825)</b>	
Digenea <i>Ptychogyliuchen thistilbardi</i>	Hall & Cribb, 2004a
<b><i>Siganus canaliculatus</i> (Park, 1797)</b>	
Digenea <i>Ptychogyliuchen thistilbardi</i>	Hall & Cribb, 2004a
<b><i>Siganus corallinus</i> (Valenciennes, 1835)</b>	
Digenea <i>Ptychogyliuchen thistilbardi</i>	Hall & Cribb, 2004a
<b><i>Siganus doliatus</i> Guérin-Méneville, 1829-38</b>	
Digenea <i>Hysteroleithoides frontilatus</i>	Bray & Cribb, 2000a
Digenea <i>Ptychogyliuchen thistilbardi</i>	Hall & Cribb, 2004a
<b><i>Siganus fuscescens</i> (Houttuyn, 1782) as <i>Siganus nebulosus</i></b>	
Monopisthocotylea <i>Tetrancistrum nebulosi</i>	Young, 1967
<b><i>Siganus canaliculatus</i> (Park, 1797) as <i>Siganus oramin</i></b>	
Monopisthocotylea <i>Tetrancistrum nebulosi</i>	Young, 1967
<b><i>Siganus spinus</i> (Linnaeus, 1758)</b>	
Digenea <i>Ptychogyliuchen thistilbardi</i>	Hall & Cribb, 2004a
<b><i>Siganus</i> sp.</b>	
Monopisthocotylea <i>Tetrancistrum nebulosi</i>	Young, 1967
Digenea <i>Hexangium sigani</i>	Durio & Manter, 1968a
Digenea <i>Atractotrema sigani</i>	Durio & Manter, 1969
Digenea <i>Gyiliauchen papillatus</i>	Durio & Manter, 1969
Digenea <i>Paracryptogonimus saccatus</i>	Durio & Manter, 1969

Digenea <i>Hysterolecitha sigani</i>	Manter, 1969
Digenea <i>Theletrum frontilatum</i>	Manter, 1969
<b>SILLAGINIDAE</b>	
<b><i>Sillago sihama</i> (Forsskål, 1775)</b>	
Polyopisthocotylea <i>Polylabris sillaginae</i>	Hayward, 1996
<b>SPHYRAENIDAE</b>	
<b><i>Sphyraena</i> sp. (recruiting larvae)</b>	
Monopisthocotylea Capsalidae larva	Cribb <i>et al.</i> , 2000
<b>SYNODONTIDAE</b>	
<b>Synodontidae Gen. sp. (recruiting larvae)</b>	
Digenea Didymozoidae larva A	Cribb <i>et al.</i> , 2000
<b>Synodontidae Gen. sp. 1 (recruiting larvae)</b>	
Digenea Didymozoidae larva C	Cribb <i>et al.</i> , 2000
Digenea <i>Erilepturus</i> sp. immature	Cribb <i>et al.</i> , 2000
<b>Synodontidae Gen. sp. 2 (recruiting larvae)</b>	
Digenea <i>Ectenurus</i> sp. immature	Cribb <i>et al.</i> , 2000
<b>Synodontidae Gen. sp. 3 (recruiting larvae)</b>	
Cestoda metacestode	Cribb <i>et al.</i> , 2000

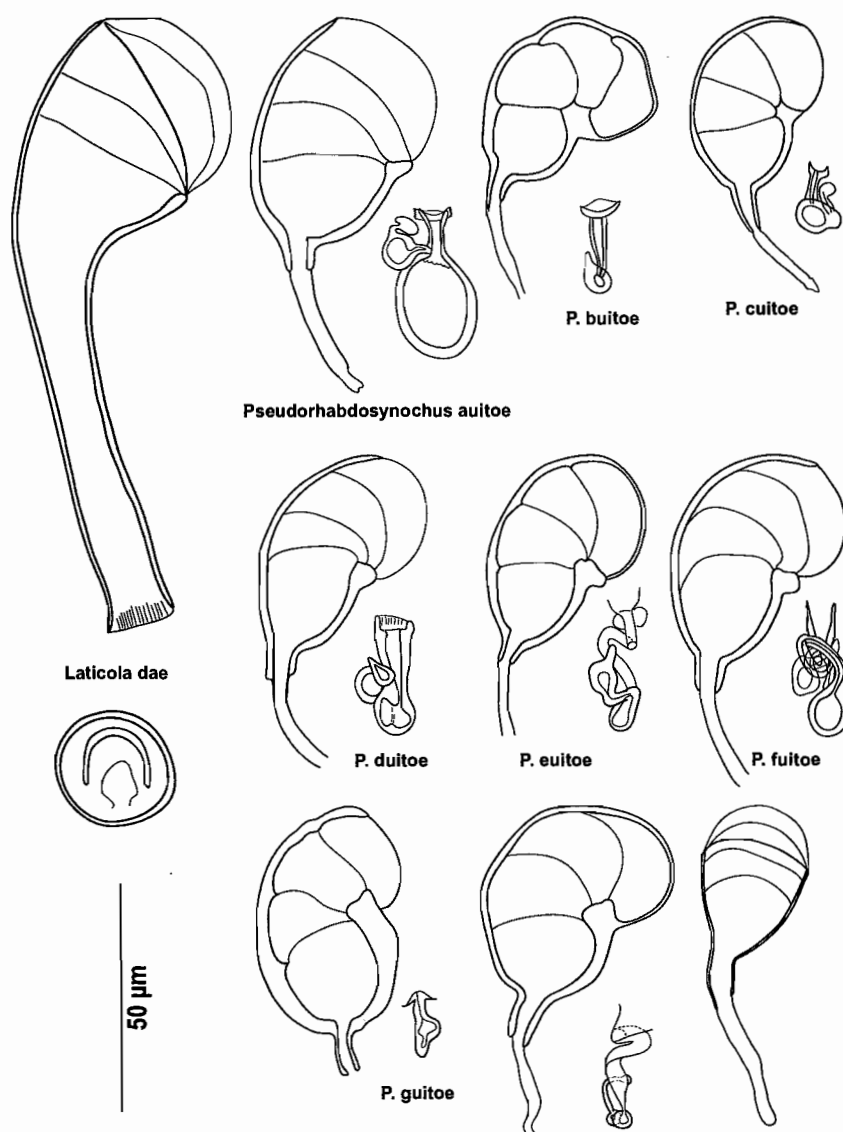


Figure 1. Parasite biodiversity: characteristics of the ten species of diplectanid monogenean present on the gill of a single fish, *Epinephelus maculatus*. Redrawn from Journo & Justine, 2006 and Justine, 2006.



DOCUMENTS  
SCIENTIFIQUES  
et TECHNIQUES

II7

Volume spécial

COMPENDIUM  
of marine species from  
New Caledonia



Edited by  
CLAUDE E. PAYRI  
Bertrand RICHER DE FORGES



Institut de recherche  
pour le développement

CENTRE DE NOUMÉA

**DOCUMENTS**  
**SCIENTIFIQUES**  
**et TECHNIQUES**

---



**Institut de recherche  
pour le développement**

Publication éditée par:  
Centre IRD de Nouméa  
BP A5, 98848 Nouméa CEDEX  
Nouvelle-Calédonie  
Téléphone: (687) 26 10 00  
Fax: (687) 26 43 26

L'IRD propose des programmes regroupés en 5 départements pluridisciplinaires :

- I DME Département milieux et environnement
- II DRV Département ressources vivantes
- III DSS Département sociétés et santé
- IV DEV Département expertise et valorisation
- V DSF Département du soutien et de la formation des communautés scientifiques du Sud

**Modèle de référence bibliographique à cette revue :**

Adjeroud M. *et al.*, 2000. Premiers résultats concernant le benthos et les poissons au cours des missions TYPATOLL.  
*Doc. Sci. Tech.* II 3, 125 p.

---

ISSN 1297-9635

Numéro II7 - Octobre 2006

© IRD 2006

Distribué pour le Pacifique par le Centre de Nouméa.

Première de couverture : Récif corallien (Côte Ouest, NC) © IRD/C.Geoffray  
Vignettes : voir les planches photographiques

Quatrième de couverture : *Platygyra sinensis* © IRD/C.Geoffray

Matériel de plongée sous-marine © IRD/C.Geoffray	L'Aldric, moyen navigant de l'IRD © IRD/J.-M. Boré
Récoltes et photographies sous-marines en scaphandre autonome © IRD/J.-L. Menou	Traitement des récoltes en laboratoire © IRD/L. Mattio

CONCEPTION/MAQUETTE/MISE EN PAGE  
MAQUETTE DE COUVERTURE  
PLANCHES PHOTOGRAPHIQUES  
TRAITEMENT DES PHOTOGRAPHIES

JEAN PIERRE MERMOUD  
CATHY GEOFFRAY/ MINA VILAYLECK  
CATHY GEOFFRAY/JEAN-LOUIS MENOU/GEORGES BARGIBANT  
NOËL GALAUD

La traduction en anglais des textes d'introduction, des Ascidies et des Echinodermes a été assurée par EMMA ROCHELLE-NEWALL,  
la préface par MINA VILAYLECK.

Ce document a été produit par le Service ISC, imprimé par le Service de Reprographie du Centre IRD de Nouméa et relié avec l'aimable  
autorisation de la CPS, financé par le Ministère de la Recherche et de la Technologie.

ISSN 1297-9635  
Numéro II7 - Octobre 2006  
© IRD 2006

**COMPENDIUM OF MARINE SPECIES FROM  
NEW CALEDONIA**

Edited by  
CLAUDE E. PAYRI, BERTRAND RICHER DE FORGES

---