

**Ichthyoplankton transport from the African coast to the Canary Islands**

**Timothée Brochier<sup>1,2</sup>, Evan Mason<sup>2</sup>, Marta Moyano<sup>2</sup>, Amina Berraho<sup>3</sup>, Francois Colas<sup>4</sup>, Pablo Sangrà<sup>2</sup>, Santiago Hernández-León<sup>2</sup>, Omar Ettahiri<sup>3</sup>, Christophe Lett<sup>5</sup>**

<sup>1</sup>*CNRS, UMR LOCEAN, Unité Mixte de Recherche 7159 CNRS/IRD/Université Pierre et Marie Curie/MNHN, Institut Pierre Simon Laplace, France*

<sup>2</sup>*Facultad de Ciencias del Mar, Universidad de Las Palmas de Gran Canaria, Canary Islands, Las Palmas de Gran Canaria, 35017, Spain*

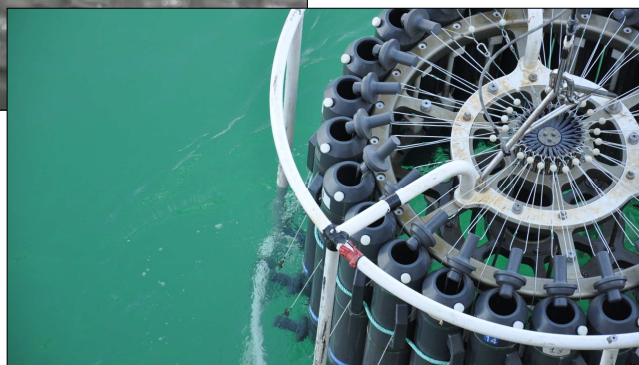
<sup>3</sup>*Institut National de Recherche Halieutique, 2 Rue Tiznit, Casablanca, Morocco*

<sup>4</sup>*Institute of Geophysics and Planetary Physics (IGPP), University of California Los Angeles, Los Angeles, CA, USA*

<sup>5</sup>*Institut de Recherche pour le Développement, UMIIRD209UMMISCO, Centre de Recherche Halieutique Méditerranéenne et Tropicale, France*

**Abstract**

The Canary Upwelling System (CUS), a major eastern boundary upwelling system, sustains large cross-border fisheries of small pelagic fish, which poses the question of stock connectivity. Studies suggest that ichthyoplankton transport from the northwest African coast to the Canary Islands (CI) is facilitated by coastal- upwelling associated filaments. Here we analyze connections between larval supply to the CI and sardine and anchovy populations that spawn over the continental shelf. For both species, ichthyoplankton observations (1) at the shelf and (2) near the island of Gran Canaria (GC) are used. Predictions of ichthyoplankton transport to GC are obtained from the Ichthyop Lagrangian transport model, which is forced by a high-resolution hydrodynamic model (ROMS) that reproduces the regional circulation. Results show that upwelling filaments play an important role in the transport of larvae to GC. However, (1) filaments are not the only mechanism, and (2) filament presence does not necessarily imply larval transport. Anchovy and sardine larval presence at GC appears to be independent of the respective adult spawning seasonality. Combining of observed and modeled data does not succeed in reproducing the observed larval patterns at GC. Various hypotheses are proposed to explain this discrepancy in larval transport to GC.



**Book of Abstracts** submitted to the IV Congress of Marine Sciences. Las Palmas de Gran Canaria, June 11<sup>th</sup> to 13<sup>th</sup>



**Title:** Book of Abstracts submitted to the IV Congress of Marine Sciences. Las Palmas de Gran Canaria, June 11th to 13th. 488 pp.

**ISBN - 10:** 84-697-0471-0

**ISBN - 13:** 978-84-697-0471-4