

CRETACEOUS TO PALEOGENE COMPRESSIONAL TECTONICS DURING DEPOSITION OF THE PURILACTIS GROUP, SALAR DE ATACAMA

César ARRIAGADA (1), Peter COBBOLD (2), Constantino MPODOZIS (3) and Pierrick ROPERCH (4).

(1) Departamento de Geología, IRD, Universidad de Chile, Santiago, Chile.(cearriag@cec.uchile.cl)

(2) Géosciences-Rennes (UMR6118 du CNRS), 35042 Rennes, France.(cobbold@univ-rennes1.fr)

(3) SIPETROL, Santiago, Chile.(constantino.mpodozis@sipetrol.cl)

(4) Departamento de Geología, IRD, Universidad de Chile, Santiago, Chile.(properch@dgf.uchile.cl)

KEY WORDS: Purilactis Group, Salar de Atacama, compressional tectonics, growth strata.

INTRODUCTION

On the western edge of the Salar de Atacama, continental deposits of the Purilactis Group, mid Cretaceous to Eocene-Oligocene in age, are up to 5 km thick (Mpodozis et al., 1999) (Fig. 1). Deposition is generally assumed to have occurred during extensional tectonics, in an arc or back-arc setting, even if syn-sedimentary extensional faults have not been described (Hartley et al., 1992; Flint et al., 1993; Charrier and Reutter, 1994). Similarly, unconformably overlying Oligo-Miocene sequences have been attributed to a stage of relaxation, following Late Eocene compressional tectonics (Götze et al., in press). Here we discuss new evidence for deposition of the Purilactis Group in a context of compressional tectonics, during uplift and eastward overthrusting of Cordillera Domeyko.

EVIDENCE FOR A COMPRESSIONAL CONTEXT

In the northern part of the area, on the western limb of the large cylindrical Barros Arana syncline (Fig. 1), a westward-verging back-thrust has detached the Purilactis Formation (in the hanging wall) from evaporites of the Tonel Formation (in the footwall). The back-thrust can be traced all along the El Bordo escarpment (Fig. 1). In the central part of the area (Cerro Quimal, Fig. 1), the syncline becomes tighter, adopting a chevron style, and its axial plane dips westward. In the footwall of the detachment between Purilactis and Tonel formations is an anticline, overturned to the E (Fig. 2a). About 1 km to the SE, a syncline and adjacent anticline mark the lower part of the Tonel Formation (Fig. 2b), whereas no folds are visible in the upper part. Another 5 km to the S, the basal section of the Tonel Formation shows growth strata. These were deposited over pre-growth strata, which form kink folds (Fig.2c).

Further S, on the eastern side of Cerro Quimal, Late Paleozoic (and early Triassic?) volcanic rocks overthrust the Tonel Formation (Fig. 2e) above an eastward-verging footwall syncline (Fig. 2d).

DISCUSSION

Along the northern part of El Bordo escarpment, the overturned anticline appears to be a fault-propagation fold, above a thrust front that roots into the eastern edge of Cordillera Domeyko (Figs. 2a & 2e). From structural styles and growth strata, we infer that at least the lower section of the Tonel Formation accumulated in a compressional context. Fission track ages for the Cerro Quimal intrusion indicate fast uplift at about 63 Ma (Andriessen and Reutter, 1994). They thus account for Paleocene alluvial facies of the Naranja unit, which unconformably overlies Maastrichtian volcanic rocks (Fig. 1, Mpodozis et al., 1999). However, the main tectonic event in the area was probably the Eocene Incaic phase, which accounted for deposition of more than 1000 m of proximal alluvial facies (Loma Amarilla strata), large clockwise tectonic rotations, uplift and eastward overthrusting of Cordillera Domeyko (Arriagada et al., 2000). Evidence for Oligocene or post-Oligocene compressional tectonics can be found to the S of Cerro Quimal, where the Tonel Formation overthrusts Eocene (and perhaps Oligocene) deposits of the Loma Amarilla strata (Fig. 1). In conclusion, the western edge of the Salar de Atacama appears to have developed in a compressional foreland setting, from mid-Cretaceous to Paleogene times.

REFERENCES

- Andriessen, P., Reutter, K.-J. 1994. K-Ar and fission-track mineral age determination of igneous rocks related to multiple magmatic arc system along the 23°S latitude of Chile and NW Argentine. In: *Tectonics of the Southern Central Andes* (edited by Reutter, K.-J., Scheuber, E., Wigger, P.), Springer-Verlag, Berlin, p. 141-153.
- Arriagada, C., Roperch, P., Mpodozis, C. 2000. Clockwise block rotations along the eastern border of the Cordillera de Domeyko, Northern Chile (22°45'-23°30'S). *Tectonophysics*, 326, 153-171.
- Charrier, R., Reutter, K.-J. 1994. The Purilactis Group of Northern Chile: Boundary Between Arc and Backarc from Late Cretaceous to Eocene. In: *Tectonics of the Southern Central Andes* (edited by Reutter, K.-J., Scheuber, E., Wigger, P.), Springer-Verlag, Berlin, pp. 189-201.
- Flint, S., Turner, P., Jolley, E., Hartley, A. 1993. Extensional tectonics in convergent margin basins; an example from the Salar de Atacama, Chilean Andes. *Geological Society of America Bulletin*, 105, 603-617.
- Götze, H.-J., Krause, S. The Central Andean gravity high, a relic of an old subduction complex? *Journal of South American Earth Sciences* (in press).
- Hartley, A., Flint, S., Turner, P., Jolley, E. 1992. Tectonic controls on the development of a semi-arid, alluvial basin as reflected in the stratigraphy of the Purilactis Group (Upper Cretaceous-Eocene), northern Chile. *Journal of South American Earth Sciences*, 5, 275-296.
- Mpodozis, C., Arriagada, C., Roperch, P., 1999. Cretaceous to Paleogene geology of the Salar de Atacama Basin, Northern Chile: A reappraisal of the Purilactis Group stratigraphy. 4th International Symposium on Andean Geodynamics, Göttingen, Germany, Editions IRD, pp. 523-526.

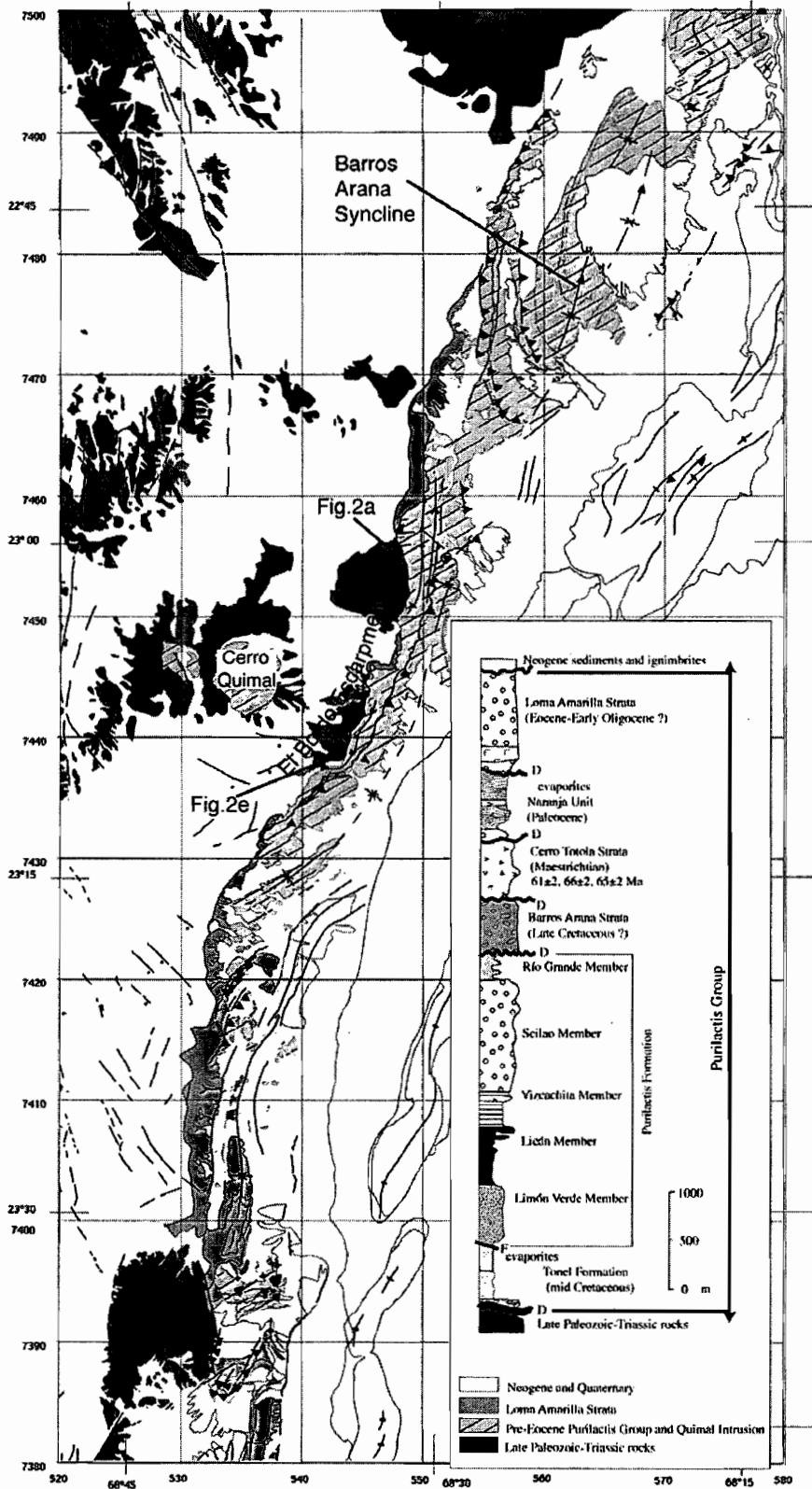


Figure 1: Simplified geological map and stratigraphy for the western edge of the Salar de Atacama basin



Figure 2: Structures at selected localities (see Fig. 1). a. Anticline overturned to E in Triassic and lower Tonel strata. b. Growth syncline in lower Tonel Fm. c. Growth strata in lower Tonel Fm. d. Footwall syncline in lower Tonel Fm (located in e). e. Thrust front at eastern edge of Cordillera de Domeyko.

Géodynamique andine Andean Geodynamics Geodinámica Andina

Résumés étendus
Extended abstracts
Resúmenes expandidos



5th International Symposium
Toulouse, France
16-18 Sept. 2002

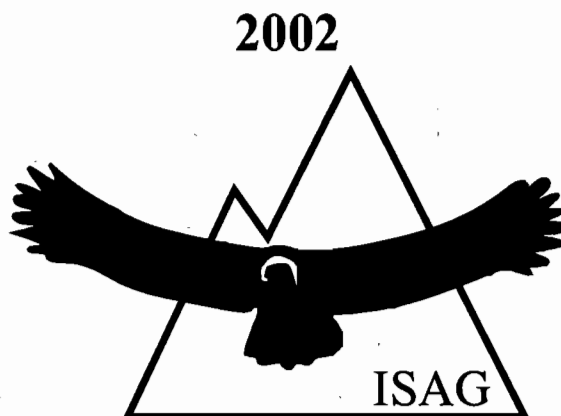
Organisateurs

Organizers

Organizadores

**Institut de recherche
pour le développement
Paris**

**Université Paul Sabatier
Toulouse
France**



**GÉODYNAMIQUE ANDINE
ANDEAN GEODYNAMICS
GEODINAMICA ANDINA**

5th International Symposium on Andean Geodynamics

Université Paul Sabatier, Toulouse, France,
16-18 Septembre 2002

**Résumés étendus
Extended abstracts
Resúmenes ampliados**

Organisateurs / Organizers / Organizadores
Institut de recherche pour le développement
Université Paul Sabatier

IRD
INSTITUT DE RECHERCHE POUR LE DÉVELOPPEMENT
Paris, 2002



COMITÉ D'ORGANISATION
COMITE ORGANIZADOR
ORGANIZING COMMITTEE

P. Baby (IRD-Toulouse), J. Darrozes (Univ. Paul Sabatier-Toulouse), J. Deramond (Univ. Paul Sabatier-Toulouse),
B. Dupré (CNRS-Toulouse), J.-L. Guyot (IRD-Toulouse), G. Hérail (IRD-Toulouse),
E. Jaillard (IRD-Quito), A. Lavenu (IRD-Toulouse), H. Miller (Univ. München),
T. Monfret (IRD-Géoscience Azur), G. Wörner (Univ. Göttingen)

Comité scientifique et représentants nationaux
Comité Científico y Representantes Nacionales
Scientific Advisory Board and National Representatives

R. Armijo (IPG, Paris), J.-P. Avouac (CEA, Paris), R. Charrier (Univ. Chile, Santiago),
J.-Y. Collot (IRD, Géoscience Azur), L. Dorbath (IRD, Strasbourg), S. Flint (Univ. Liverpool), B. France-Lanord
(CNRS, Nancy), L. Fontboté (Univ. Genève), Y. Gaudemer (Univ. Paris VII), R. Gaupp (Univ. Jena),
F. Hervé (Univ. Chile, Santiago), T.E. Jordan (INSTOC, Cornell), J. Mojica (Univ. Bogotá),
O. Oncken (Univ. Potsdam), L. Ortlieb (IRD, Bondy), R.J. Pankhurst (Brit. Antarctic Surv.),
V. Ramos (Univ. Buenos Aires), P. Ribstein (IRD, Paris),
C. Robin (Univ. Clermont-Ferrand), S. Rosas (Univ. Lima), F. Sàbat (Univ. Barcelona),
M. Schmitz (FUNVISIS, Caracas), R. Suárez Soruco (YPBF, La Paz),
M. Rivadeneira (Petroproducción), W. Winkler (ETH, Zürich).

APPUIS FINANCIERS
FUNDINGS
APPOYO FINANCIERO

L'organisation de l'ISAG 2002 et les bourses accordées à un certain nombre de collègues
latino-américains ont été possibles grâce au soutien financier de l'IRD
(notamment de la Délégation à l'Information et à la Communication), de la région Midi-Pyrénées,
de l'Université Paul Sabatier et de l'Andean Committee de l'ILP.