

REPUBLIQUE TUNISIENNE
MINISTÈRE DE L'AGRICULTURE

DIRECTION DES RESSOURCES EN EAU
BUREAU DE L'INVENTAIRE
ET DES RECHERCHES HYDROLOGIQUES

OFFICE DE LA RECHERCHE SCIENTIFIQUE
ET TECHNIQUE OUTRE-MER

MISSION EN TUNISIE

RECHERCHES EN MILIEU MÉDITERRANÉEN SEMI-ARIDE
(Djebel Semmana - Tunisie Centrale)

DONNEES CLIMATOLOGIQUES ET PLUVIOMETRIQUES

H. CAMUS

MAI 1984

REPUBLIQUE TUNISIENNE
MINISTÈRE DE L'AGRICULTURE
DIRECTION DES RESSOURCES EN EAU

*BUREAU DE L'INVENTAIRE
ET DES RECHERCHES HYDROLOGIQUES*

OFFICE DE LA RECHERCHE SCIENTIFIQUE
ET TECHNIQUE OUTRE-MER
MISSION EN TUNISIE

RECHERCHES EN MILIEU MÉDITERRANÉEN SEMI-ARIDE

(Djebel Semmama - Tunisie Centrale)

DONNEES CLIMATOLOGIQUES
ET PLUVIOMETRIQUES

ANNEE 1982 - 1983

Mai 1984

H. CAMUS
Maître de Recherche Principal
avec la collaboration
de M. BEN YOUNES, Hydrologue

La station climatologique de Bled RETSMAÏA (1) a été installée en avril 1982 dans la zone de piémont du jebel Semmama ; en rive gauche de l'oued El Hissiane et à moins d'un kilomètre de la station aval téléphonique qui contrôle le bassin versant.

Dans cette zone dégagée, sans obstacle brise-vent, sont effectuées des mesures journalières classiques des paramètres climatologiques les plus fréquemment observés. Nous avons rassemblé dans ce document l'ensemble des observations de l'année 1982-1983.

Description de la station

Les appareils sont disposés à l'intérieur d'un carré de 15 m de côté, délimité par un grillage de 1 m de hauteur, qui les protège contre les dégâts éventuels dus aux animaux domestiques ou autres. Les surface du sol est nue, et maintenue comme telle, tout au long de l'année.

Dans le tableau suivant nous donnons les éléments qui sont quotidiennement mesurés à 7 h, 13 h et 19 h, les appareils utilisés et les symboles par lesquels on désigne ces éléments.

Température de l'air	θ_a	Thermomètre
Température MAXIMUM	θ_x	Thermomètre à maximum
Température MINIMUM	θ_n	Thermomètre à minimum
Humidité relative	H_R	Psychromètre mural
Vitesse du vent à 2 m	U_2	Anémomètre totalisateur
Evaporation PICHE	E_V	Evaporomètre de PICHE
Evaporation sur bac ORSTOM	E_R	Bac enterré ORSTOM
Température de l'eau du bac en surface	θ_e	Thermomètre
Mesures des intensités de la pluie	P_G	Pluviographe
Direction du vent		Girouette
Mesure de la pluie à différents niveaux		Pluviomètre
	au sol	P_0
	à 0,5 m	P_5
	à 1,0 m	P_{10}
	à 1,5 m	P_{15}
	à 2,0 m	P_{20}

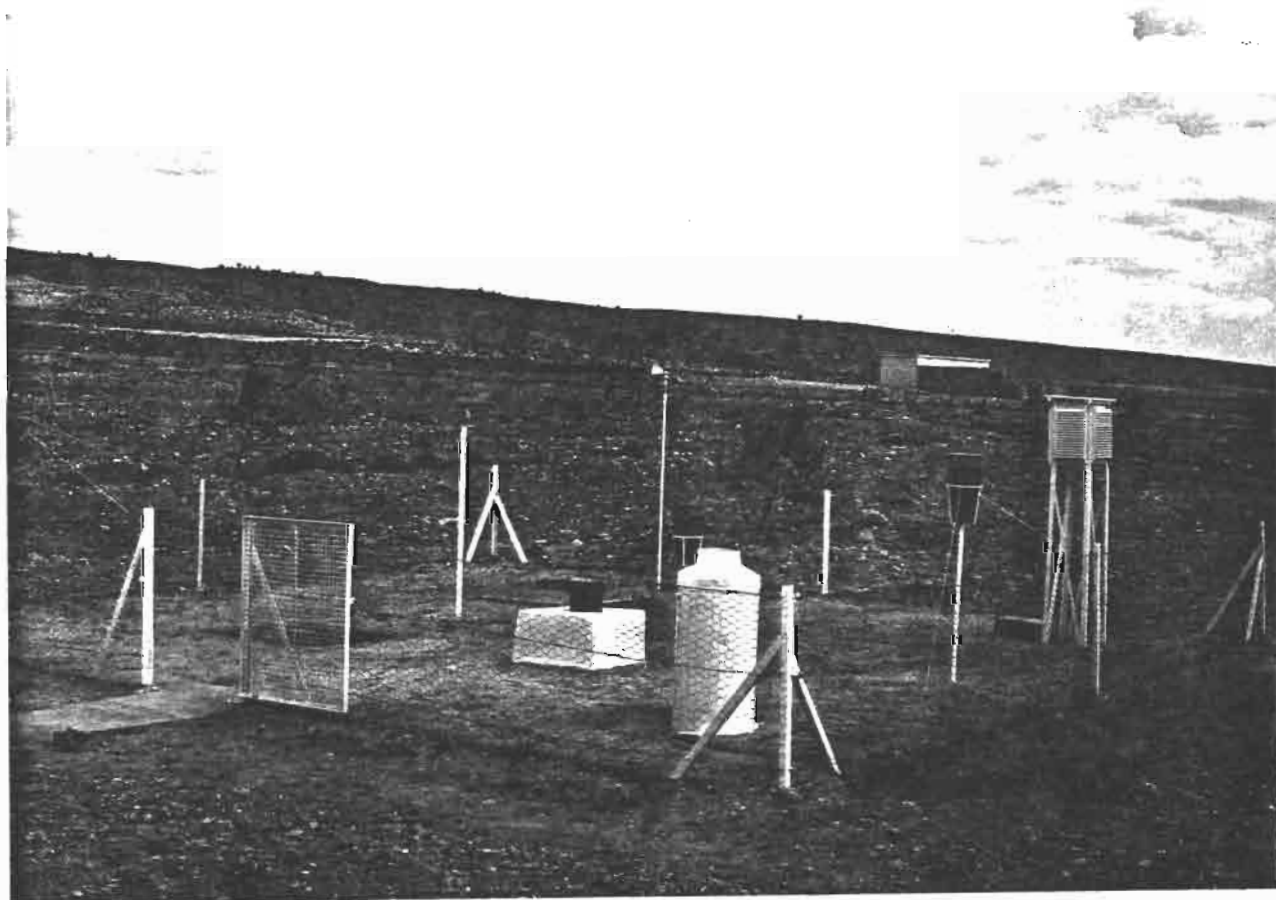


Fig.I - Vue de la station météorologique de Bled RETSMAIA

(jebel Semmana , Tunisie centrale)

Station climatologique de Bled RETOMAIA

TEMPERATURES DE L'AIR OBSERVEES A 7 H. (Année 1982-1983)

JOUR	SEPT	OCTO	NOVE	DECE	JANV	FEVR	MARS	AVRI	MAI	JUIN	JUIL	AOUT
1	28.0	18.0	12.5	5.0	0.5	6.0	6.5	5.5	19.0	19.0	21.0	22.0
2	15.0	17.0	9.5	8.5	2.0	10.5	3.0	7.5	12.0	20.5	22.0	24.0
3	18.0	16.5	13.5	4.0	3.5	4.5	4.0	5.5	12.0	18.0	18.5	25.0
4	22.5	15.5	13.0	6.5	6.0	2.0	3.0	8.0	15.5	19.5	20.0	21.5
5	22.0	16.0	12.5	8.0	7.0	4.5	0.5	7.5	20.0	20.5	23.0	20.0
6	20.0	19.0	9.0	6.5	11.5	6.0	4.5	10.5	15.0	20.0	26.0	20.5
7	26.0	15.0	11.0	6.0	3.5	5.5	6.5	7.5	15.5	21.5	28.5	21.0
8	18.0	11.5	11.0	4.0	7.0	4.5	6.0	7.0	17.5	22.0	21.5	21.5
9	17.5	10.5	13.0	4.5	4.5	6.0	7.0	11.0	18.5	18.0	21.5	25.5
10	20.0	16.0	11.0	8.0	6.5	6.0	11.0	12.5	14.0	17.5	22.5	23.5
11	20.0	14.5	11.0	8.0	5.0	1.5	9.5	16.0	12.5	23.0	20.0	21.5
12	19.0	14.5	10.5	5.5	-0.5	-3.0	8.0	18.5	15.5	27.0	24.0	19.5
13	16.5	14.0	10.0	6.0	1.0	2.5	7.5	8.0	17.0	21.0	20.5	20.5
14	16.0	17.0	12.0	8.0	5.0	3.0	3.5	5.5	17.0	16.5	23.0	22.0
15	15.0	15.5	10.0	7.0	6.0	5.5	11.0	6.5	19.0	14.5	24.5	22.0
16	16.5	14.0	5.5	4.5	8.0	5.0	8.0	5.5	13.0	17.5	19.5	21.5
17	18.0	15.5	7.0	7.5	7.5	3.0	5.5	10.5	15.0	15.5	21.0	22.5
18	17.0	12.5	8.5	5.5	3.0	4.0	6.0	18.5	16.5	17.5	21.0	20.5
19	17.0	15.5	9.5	2.0	9.5	1.0	7.5	17.0	23.5	16.5	21.0	19.0
20	20.5	16.5	10.0	4.5	5.5	1.5	5.0	14.0	21.0	17.5	22.5	21.5
21	21.0	17.5	4.0	7.5	-0.5	2.0	11.0	19.5	21.5	16.0	25.0	20.5
22	17.0	9.0	4.5	7.0	2.5	7.0	9.5	12.0	12.0	17.0	26.0	20.5
23	19.0	12.0	6.5	4.0	4.0	1.0	10.5	14.0	9.5	19.5	27.5	22.0
24	15.0	11.5	8.5	1.0	6.0	5.5	15.5	12.0	12.5	19.5	28.0	22.5
25	18.0	10.0	8.0	3.0	2.0	5.5	14.0	12.5	13.5	22.0	27.0	20.0
26	19.0	10.0	9.0	5.0	2.5	7.5	4.5	12.0	11.0	24.0	26.0	20.5
27	18.5	10.5	7.0	5.0	5.0	10.5	8.0	15.0	15.0	23.0	26.0	20.5
28	18.5	10.0	7.5	5.5	6.0	7.0	9.0	12.5	12.5	19.0	26.0	22.0
29	18.0	12.5	5.5	5.0	7.5		7.0	13.0	16.5	19.0	29.0	19.0
30	18.0	10.5	7.0	5.5	5.5		6.0	18.5	18.5	19.5	27.5	27.0
31		13.0		2.5	8.0		5.5		21.0		24.5	20.5

Station climatologique de Bled RETOMAIA

TEMPERATURES DE L'AIR OBSERVEES A 13 H. (Année 1982-1983)

JOUR	SEPT	OCTO	NOVE	DECE	JANV	FEVR	MARS	AVRI	MAI	JUIN	JUIL	AOUT
1	35.5	26.0	16.5	10.5	10.0	16.5	14.5	17.5	25.5	30.5	31.0	35.0
2	22.5	25.5	11.5	8.5	8.5	15.5	11.0	17.0	16.0	25.5	30.0	34.5
3	23.5	25.0	16.0	10.0	9.5	9.5	9.5	16.0	21.5	29.0	28.0	33.0
4	32.0	25.0	17.5	11.0	11.5	10.0	10.5	12.0	15.5	29.0	28.0	29.5
5	31.0	24.0	15.5	9.5	15.5	9.0	11.5	16.0	25.0	29.0	32.0	33.0
6	32.5	27.5	19.0	11.5	17.5	13.5	13.5	20.0	26.5	27.0	35.0	31.0
7	33.5	25.0	17.5	11.5	16.5	13.0	11.0	20.0	30.0	33.0	36.5	30.5
8	25.5	22.5	20.0	13.5	11.5	14.0	14.5	24.0	27.5	29.0	29.5	33.5
9	28.0	24.5	20.5	9.0	8.0	15.0	17.5	23.5	24.5	25.5	31.0	31.0
10	29.5	22.5	16.5	12.5	7.0	15.0	21.5	27.0	22.5	28.5	30.0	31.0
11	30.0	20.5	13.5	14.5	10.5	7.0	15.5	29.5	15.5	33.5	31.0	30.5
12	25.0	21.5	12.5	10.5	11.0	10.5	13.5	29.5	22.5	33.0	32.0	31.0
13	18.5	27.0	15.5	17.0	13.5	14.5	17.5	14.0	27.5	27.5	32.0	28.5
14	22.0	29.5	18.5	15.5	16.0	13.0	21.0	16.0	28.0	20.5	31.5	29.5
15	24.5	22.5	12.5	10.0	11.0	12.0	23.5	12.0	23.5	24.5	30.5	32.0
16	25.5	21.0	6.5	11.5	12.5	14.5	11.0	17.0	22.5	26.0	28.5	31.5
17	25.0	23.0	11.0	11.0	12.5	11.0	9.5	25.5	24.5	26.5	29.5	33.5
18	26.5	25.0	10.0	10.5	14.5	5.5	12.5	25.5	27.5	30.0	31.5	31.5
19	30.0	23.0	14.0	5.0	18.5	6.5	13.5	25.5	31.5	25.0	30.5	30.5
20	31.5	17.0	14.0	12.0	4.0	9.0	19.5	24.0	29.5	28.0	32.5	31.0
21	29.5	19.5	16.0	15.5	5.5	13.0	21.5	29.5	30.0	23.0	34.5	30.0
22	30.0	15.5	15.0	14.0	8.5	15.0	22.5	23.0	22.0	25.5	33.0	29.0
23	24.0	21.0	14.5	5.5	13.5	10.5	21.5	22.0	15.5	27.5	38.0	30.0
24	25.0	19.0	15.5	4.5	14.5	10.0	19.0	18.0	22.5	27.0	33.0	32.0
25	28.0	16.5	16.5	6.5	9.0	13.5	18.0	21.5	22.5	28.0	36.5	27.0
26	29.0	15.5	14.5	7.5	10.5	18.5	12.0	21.0	19.0	29.0	35.5	29.0
27	26.5	16.5	10.0	7.5	15.5	15.5	14.5	24.5	19.5	29.5	35.5	29.0
28	25.0	11.0	12.5	9.5	14.0	12.5	18.5	26.5	20.5	24.5	36.0	30.5
29	26.0	13.5	11.0	10.5	12.5		14.0	22.0	24.0	25.0	36.5	37.0
30	27.0	15.0	11.0	8.0	16.0		8.5	25.5	30.5	31.0	37.0	38.0
31		15.0		7.5	14.0		8.0		29.0		36.5	32.0

Station climatologique de Bled RETSMAIA

TEMPERATURES DE L'AIR OBSERVEES A 19 H.

(Année 1982-1983)

JOUR	SEPT	OCTO	NOVE	DECE	JANV	FEVR	MARS	AVRI	MAI	JUIN	JUIL	AOUT
1	18.5	23.0	13.5	9.5	5.5	13.0	15.0	14.0	20.5	27.0	28.0	30.5
2	21.5	23.5	14.5	9.0	5.5	15.5	6.0	16.5	16.5	23.5	28.0	31.5
3	26.0	21.5	14.0	6.5	6.5	6.5	6.5	14.0	21.0	24.0	28.0	25.5
4	28.0	21.0	14.0	7.5	9.0	8.0	8.5	13.5	25.5	27.5	29.5	30.0
5	28.5	22.0	12.5	9.0	11.5	5.0	8.5	13.5	19.0	25.0	28.5	28.0
6	28.0	21.5	13.0	8.0	13.0	8.5	10.5	17.5	21.5	26.5	33.5	29.0
7	27.0	20.0	14.0	8.0	10.5	8.0	9.0	17.5	25.5	30.5	29.5	23.0
8	22.5	18.5	14.5	8.0	9.0	10.5	11.5	19.5	25.5	23.5	29.0	31.0
9	25.0	20.5	15.5	7.0	7.0	10.5	14.5	20.5	17.5	24.0	30.0	31.5
10	25.0	20.0	15.0	8.5	7.0	12.0	17.5	22.5	21.0	27.0	30.0	25.0
11	25.5	18.0	12.0	7.0	7.5	5.0	11.0	25.5	24.0	29.0	30.5	28.5
12	18.5	19.5	12.0	8.0	4.0	8.5	12.0	12.0	22.0	25.5	32.5	28.5
13	19.0	20.3	12.5	10.0	4.5	10.0	12.5	10.0	25.5	27.0	29.5	26.5
14	18.0	19.0	12.0	10.0	9.0	7.0	16.0	13.0	26.0	18.0	30.0	27.0
15	21.5	20.5	11.5	6.5	9.0	9.0	18.0	11.5	23.0	21.0	27.5	28.5
16	23.5	18.5	6.5	9.5	10.0	9.0	7.0	15.5	20.5	21.5	28.0	28.5
17	24.0	20.5	10.0	7.0	8.5	9.0	6.5	20.5	23.0	24.0	28.5	29.0
18	24.0	21.5	9.5	4.5	9.5	4.0	8.5	22.5	26.0	24.0	30.5	27.5
19	25.5	20.0	11.0	3.0	11.5	5.5	10.5	18.5	27.0	22.0	30.5	26.0
20	27.0	17.5	11.0	7.5	3.0	5.5	16.0	22.5	27.5	20.5	31.5	29.5
21	23.5	15.5	10.0	8.0	2.5	9.5	17.0	17.0	26.0	22.0	33.5	28.0
22	22.0	14.0	10.5	8.0	6.0	11.0	17.0	18.5	12.0	24.5	35.5	27.0
23	18.5	17.5	9.5	3.5	7.0	9.0	16.5	19.0	16.0	22.0	34.5	27.5
24	22.5	15.0	10.5	3.0	8.5	9.0	20.0	16.5	22.0	26.5	33.5	31.0
25	24.0	12.5	9.5	3.5	6.5	10.5	8.0	20.0	19.5	27.5	34.0	26.0
26	24.5	12.0	11.5	5.5	7.5	13.5	10.5	19.5	18.5	27.0	33.0	28.0
27	22.0	12.0	6.0	6.0	11.0	12.0	12.0	20.0	17.5	31.0	32.5	22.0
28	22.5	11.5	11.0	7.5	11.5	11.5	11.5	23.5	17.5	23.0	34.0	31.0
29	24.0	12.5	9.0	7.0	9.0		9.5	20.5	23.5	23.5	34.5	35.0
30	24.5	13.0	7.5	6.5	12.0		7.0	24.0	24.0	28.5	34.0	35.0
31		13.5		3.5	9.5		8.0		27.0		33.0	29.0

Station climatologique de Hled RETSMAIA

TEMPERATURES MAXIMALES OBSERVEES EN 1982-1983

JOUR	SEPT	OCTO	NOVE	DECE	JANV	FEVR	MARS	AVRI	MAI	JUIN	JUIL	AOUT
1	36.5	27.0	16.5	12.0	10.0	18.0	15.5	19.5	26.5	31.5	32.5	36.5
2	34.5	28.0	17.0	14.5	9.0	15.0	12.0	21.5	16.5	28.0	31.5	36.5
3	27.0	26.0	16.5	11.0	10.0	10.0	11.0	17.0	25.0	30.5	31.0	34.0
4	33.5	25.5	18.0	11.5	13.0	13.0	12.5	13.5	30.5	31.5	31.5	33.0
5	32.5	26.0	17.0	9.5	16.0	11.0	13.5	18.0	32.0	31.0	33.5	37.5
6	34.0	27.5	18.5	11.5	17.5	13.5	15.5	21.5	27.0	30.0	36.5	33.5
7	34.5	26.0	18.5	13.0	17.0	13.0	11.0	21.5	30.5	34.5	38.0	32.5
8	27.0	23.0	20.0	14.0	13.0	14.5	16.0	25.0	29.0	30.5	31.5	36.0
9	28.5	26.0	21.5	9.0	9.0	16.0	19.5	25.5	27.0	29.0	33.0	34.0
10	31.0	24.0	16.5	13.0	8.0	15.5	23.5	28.5	24.0	30.5	32.5	33.5
11	30.5	22.0	15.0	14.5	11.5	12.0	17.0	31.0	21.5	34.5	33.0	33.0
12	25.5	22.5	14.0	12.5	13.0	12.0	15.0	30.0	26.0	34.5	34.5	33.5
13	21.5	27.0	16.0	16.5	14.0	15.0	19.5	23.0	29.5	31.5	32.5	30.5
14	24.5	30.0	18.5	16.5	17.0	14.0	21.5	17.5	29.0	27.0	34.0	31.0
15	27.0	24.5	14.0	12.5	12.0	13.5	24.5	15.0	28.5	26.0	32.0	33.5
16	28.0	23.0	11.0	12.0	13.0	15.0	18.0	18.0	24.5	26.5	30.5	34.0
17	27.0	25.0	12.0	12.0	12.5	12.5	11.0	26.5	27.5	29.0	31.5	35.0
18	27.5	26.0	12.5	11.5	17.0	9.0	13.0	27.0	30.0	32.0	33.5	33.0
19	30.5	24.0	14.0	5.5	19.0	7.5	13.5	26.5	31.5	27.0	33.5	33.0
20	32.5	20.0	14.5	13.5	11.5	11.0	21.5	26.0	31.5	29.0	34.5	33.0
21	30.5	19.0	17.0	16.0	6.5	14.5	21.5	31.0	32.0	24.5	36.5	32.5
22	31.0	15.5	16.0	14.5	10.0	15.0	23.5	24.5	23.0	28.0	38.5	31.0
23	25.5	22.5	15.5	8.0	14.5	12.0	22.0	22.5	19.0	28.0	38.5	31.5
24	27.0	30.0	16.5	5.0	15.5	11.0	23.5	21.0	25.5	29.0	38.5	35.5
25	25.0	17.0	17.0	6.5	9.5	14.5	22.0	24.0	26.5	30.5	37.5	31.0
26	29.5	16.0	14.5	9.0	12.5	19.0	13.0	22.5	21.0	31.0	37.0	31.0
27	26.5	16.5	11.5	8.0	15.5	15.5	15.5	25.5	21.0	33.0	37.0	31.5
28	26.5	12.0	13.0	9.5	15.0	15.5	18.5	28.5	22.0	33.0	37.0	34.5
29	28.0	14.5	12.5	11.0	14.0		14.0	24.0	27.0	27.0	37.5	38.0
30	28.5	15.5	11.5	8.0	17.0		10.0	26.5	31.0	31.0	38.5	40.5
31		15.5		8.0	14.0		9.5		30.0		38.0	36.5

Station climatologique de Bled RETSMAIA

TEMPERATURES MINIMALES OBSERVEES EN 1982-1983

JOUR	SEPT	OCTO	NOVE	DECE	JANV	FEVR	MARS	AVRI	MAI	JUIN	JUIL	AOUT
1	18.5	16.0	11.0	4.0	2.0	4.0	2.0	2.5	17.5	13.0	15.0	19.5
2	10.5	15.0	8.5	5.0	0.0	-1.5	-1.5	5.5	11.0	15.5	15.0	22.0
3	14.5	14.5	12.5	2.0	2.5	3.0	1.5	4.5	11.0	14.5	14.5	21.0
4	16.5	12.5	9.0	4.5	2.0	3.0	0.0	5.0	10.0	14.0	19.0	19.0
5	16.5	12.5	10.0	4.0	4.0	0.5	2.0	6.0	10.5	13.5	17.5	18.5
6	18.5	11.5	10.5	5.0	0.5	1.5	-1.5	6.0	11.5	14.5	17.0	18.5
7	19.0	11.5	5.5	3.0	3.5	4.5	5.0	5.5	11.0	15.5	15.0	17.0
8	15.0	10.0	9.5	0.5	2.0	3.0	2.0	3.5	14.0	17.0	19.5	15.5
9	13.5	9.0	8.0	2.0	2.0	3.5	2.0	3.5	14.5	12.0	17.5	19.5
10	18.5	11.5	7.0	0.5	4.5	2.0	5.5	8.0	8.0	12.5	17.5	0.5
11	18.0	13.5	10.5	3.5	4.5	1.0	6.5	11.0	12.0	15.5	18.0	21.0
12	18.0	12.5	9.0	4.0	-2.0	-5.5	7.5	17.0	12.0	14.5	19.5	16.5
13	15.0	10.0	9.5	3.0	-0.5	0.5	5.0	6.0	12.5	16.5	19.5	15.5
14	14.0	9.5	10.0	5.5	-0.5	1.0	2.5	4.5	13.0	12.0	19.5	14.5
15	12.5	13.5	8.5	5.5	2.0	4.5	8.0	4.5	15.0	8.0	20.0	18.5
16	14.0	13.0	1.5	3.0	3.5	2.5	3.5	2.5	8.5	12.0	16.5	15.0
17	16.0	13.0	11.0	5.0	2.5	2.0	2.0	7.5	11.0	12.0	16.0	16.0
18	14.5	8.5	4.0	1.5	1.0	1.0	4.0	15.5	10.5	12.5	15.5	18.0
19	14.5	13.5	7.5	0.0	4.0	0.5	6.0	15.0	14.5	12.5	17.0	17.0
20	17.0	15.0	6.0	-1.0	7.5	-0.5	3.5	10.0	12.5	16.5	19.0	17.5
21	17.5	14.5	0.2	1.0	-2.0	0.5	6.0	12.5	14.5	10.5	19.0	19.5
22	15.5	7.0	3.5	2.5	0.0	3.0	8.5	9.5	6.0	14.5	20.5	18.0
23	15.0	9.0	3.0	1.0	2.0	0.5	9.5	10.0	5.5	18.5	22.0	19.5
24	12.5	8.5	0.5	-1.0	1.0	4.0	11.5	10.5	7.0	16.0	23.5	16.0
25	14.0	9.0	6.5	-0.5	1.0	4.0	11.5	7.0	10.5	17.0	21.0	18.0
26	14.5	6.5	5.0	1.5	2.0	3.5	2.0	10.5	8.5	17.0	20.5	16.0
27	16.5	9.5	5.0	1.0	1.0	1.5	6.0	11.5	12.0	18.0	18.5	17.5
28	17.0	6.0	8.0	4.5	4.0	1.0	2.0	10.0	10.0	16.5	20.5	19.0
29	15.5	7.5	5.0	4.5	3.0		4.5	11.5	9.5	15.5	21.5	15.5
30	15.0	9.0	5.0	4.5	4.0		3.5	15.0	12.0	14.0	23.5	24.0
31		12.0		0.0	5.5		4.5		18.0		23.0	18.0

Station climatologique de Eled NETSMAIA

TEMPERATURES MOYENNES JOURNALIERES , MENSUELLES et ANNUELLE 1982-1983

JOUR	SEPT	OCTO	NOVE	DECE	JANV	FEVR	MARS	AVRI	MAI	JUIN	JUIL	AOUT
1	27.5	21.5	13.7	8.0	6.0	11.0	8.8	11.0	22.0	22.2	23.7	28.0
2	22.5	21.5	12.7	9.5	4.5	6.7	5.3	13.5	13.7	21.7	23.2	29.3
3	20.7	20.3	14.5	6.5	6.3	6.5	4.8	10.7	18.0	22.5	22.7	27.5
4	25.0	19.0	13.5	8.0	7.5	8.0	6.3	9.3	20.2	22.7	25.3	26.0
5	24.5	19.3	13.5	6.7	10.0	5.7	7.8	12.0	21.3	22.3	25.5	28.0
6	26.3	19.5	16.0	8.2	9.0	7.5	7.0	13.7	19.3	17.3	26.7	26.0
7	26.7	18.7	12.0	8.0	10.3	8.7	8.0	13.5	20.7	25.0	26.5	24.7
8	21.0	16.5	14.3	7.2	7.5	8.7	9.0	14.3	21.5	23.8	25.5	25.7
9	21.0	17.5	14.3	5.5	5.5	9.7	10.8	14.7	20.7	20.5	25.3	26.7
10	24.7	17.8	11.7	6.7	6.3	8.7	14.5	18.3	18.0	21.5	24.5	17.0
11	24.2	17.8	12.8	9.0	8.0	6.5	11.8	21.0	16.7	25.0	25.5	27.0
12	21.7	17.5	11.5	8.3	5.5	3.3	11.3	23.5	19.0	24.5	27.0	25.0
13	18.3	18.5	12.8	9.7	6.7	7.7	12.3	14.5	21.0	24.0	26.0	23.0
14	19.2	19.5	14.7	11.0	8.3	7.5	11.8	11.0	21.0	19.5	26.7	22.7
15	19.7	19.0	11.2	9.0	7.0	9.0	16.3	9.7	21.7	17.0	26.0	26.0
16	21.0	18.0	6.3	7.5	8.3	8.7	10.8	10.2	16.5	19.2	23.5	24.5
17	21.5	19.0	11.5	8.5	7.5	7.3	6.5	17.0	19.3	20.5	23.7	25.5
18	21.0	17.3	8.3	6.5	9.0	5.0	8.5	21.3	20.2	22.3	24.5	25.5
19	22.5	18.7	10.7	2.7	11.5	4.0	9.8	20.7	23.0	19.7	25.3	25.0
20	24.8	17.5	10.2	6.3	9.5	5.3	12.5	18.0	22.0	22.7	26.7	25.3
21	24.0	16.8	8.6	8.5	2.3	7.5	13.8	21.7	23.3	17.5	27.7	26.0
22	23.2	11.3	9.7	8.5	5.0	9.0	16.0	17.0	14.5	21.3	29.5	24.5
23	20.3	15.7	9.3	4.5	8.3	6.3	15.8	16.5	12.3	18.5	30.3	25.5
24	19.7	19.3	8.5	2.0	8.3	7.5	17.5	15.7	16.3	17.5	31.0	25.7
25	19.5	13.0	11.7	3.0	5.2	9.2	16.8	15.7	18.5	18.7	29.3	24.5
26	21.5	13.0	8.2	4.5	8.3	8.5	10.8	18.5	16.5	25.5	27.8	24.5
27	22.0	11.3	9.7	5.2	7.2	11.2	7.5	16.5	14.7	24.0	28.7	23.5
28	21.7	9.0	10.5	7.0	9.5	8.2	10.2	19.2	16.0	24.7	28.7	26.7
29	21.7	11.0	8.7	7.7	8.5		9.3	17.7	18.3	21.3	29.5	26.7
30	22.0	12.3	8.3	6.3	10.5		6.8	20.7	21.5	22.5	31.0	32.3
31		13.7		4.0	9.7		7.0		24.0		30.5	27.3
Max.	27.5	21.5	16.0	11.0	11.5	11.2	17.5	23.5	24.0	25.5	31.0	32.3
Min.	18.3	9.0	6.3	2.0	2.3	4.0	4.8	9.3	12.3	17.0	22.7	17.0
MOY.	22.0	16.8	11.3	6.9	7.4	7.6	10.5	15.5	19.0	22.6	26.6	25.7

Station climatologique de Bled RETSMAIA

HUMIDITES RELATIVES OBSERVEES A 7 H.

(Année 1982-1983)

JOUR	SEPT	OCTO	NOVE	DECE	JANV	FEVR	MARS	AVRI	MAI	JUIN	JUIL	AOUT
I	29.9	95.1	94.2	77.4	90.6	64.3	65.0	70.7	52.0	64.2	62.2	63.1
2	69.3	90.0	93.6	61.5	82.7	42.2	77.4	72.9	60.8	46.5	52.1	72.2
3	67.5	94.9	94.4	84.1	85.1	69.4	76.4	85.1	88.4	46.6	63.7	58.8
4	56.3	74.6	88.7	85.7	71.3	74.1	83.4	73.5	60.4	41.2	57.2	82.7
5	52.1	84.7	88.5	86.5	40.0	84.5	63.2	60.0	45.8	46.5	53.8	90.8
6	45.8	56.0	93.2	85.7	39.1	57.5	77.2	47.6	59.7	57.2	40.9	86.5
7	35.1	94.7	87.9	85.4	34.5	63.6	85.7	72.9	79.5	47.9	35.8	70.1
8	71.9	88.2	87.9	84.1	79.2	76.9	78.3	79.2	45.8	41.6	70.5	43.3
9	71.5	81.7	67.3	84.5	76.9	64.3	65.7	64.9	43.4	42.6	70.5	43.3
10	90.8	94.8	93.9	93.2	78.7	50.7	43.2	56.3	73.4	62.7	59.9	79.5
11	90.8	89.3	93.9	86.5	84.8	73.5	45.6	30.7	94.2	43.1	69.3	82.7
12	81.5	73.8	93.8	85.1	90.2	77.8	86.5	24.7	55.8	36.5	38.1	52.7
13	85.0	63.3	93.7	78.3	72.9	42.5	53.6	73.5	66.6	54.6	57.8	50.2
14	79.8	45.0	88.4	86.5	48.6	53.1	91.8	70.7	53.4	66.1	43.1	41.6
15	89.4	94.8	93.7	79.2	71.3	56.6	53.9	65.0	40.4	78.9	26.9	34.9
16	85.0	78.5	85.1	84.5	80.0	63.6	48.4	63.6	62.1	45.8	68.9	30.7
17	90.3	89.6	79.2	72.9	86.3	75.3	49.7	53.1	55.1	51.2	66.1	56.3
18	90.0	88.5	80.3	56.6	75.3	92.0	85.4	21.1	57.1	67.1	54.6	78.0
19	85.2	79.5	93.6	82.7	34.5	81.8	86.3	40.9	34.2	66.1	66.1	86.0
20	61.7	94.9	87.5	84.5	77.4	73.5	84.8	53.6	36.6	67.1	42.3	82.7
21	66.1	95.0	100.0	53.6	100.0	82.7	59.4	37.6	44.3	79.8	27.8	95.4
22	80.4	93.5	100.0	59.2	83.0	65.7	68.9	66.1	88.4	90.0	32.2	90.9
23	90.6	77.5	92.8	92.0	46.3	90.9	87.7	58.4	68.9	68.9	26.5	63.1
24	79.2	76.7	86.8	81.8	30.9	92.5	69.8	71.6	72.0	64.7	32.5	67.4
25	76.4	81.4	86.5	83.4	65.7	92.5	63.3	72.0	73.0	41.6	28.3	86.4
26	40.4	81.4	50.4	84.8	83.0	86.3	54.7	88.4	87.9	47.7	32.2	78.0
27	76.7	93.8	86.0	84.8	48.6	87.7	60.8	69.3	55.1	53.3	16.1	69.7
28	85.8	93.8	79.6	85.1	50.7	65.7	50.4	72.0	72.0	81.5	21.3	66.9
29	95.1	94.2	92.5	84.8	60.0		52.7	83.2	40.0	58.4	26.4	72.7
30	95.1	87.7	93.0	85.1	63.6		71.3	47.4	43.4	100.0	23.9	28.3
31		94.3		91.5	48.4		92.5		43.6		29.8	90.9
Max.	95.1		100.0	93.2	100.0	92.5	92.5	88.4	94.2	100.0	70.5	95.4
Min.	29.9	45.0	50.4	53.6	30.9	42.2	43.2	21.1	34.2	36.5	16.1	28.3
Moy.	73.8	84.6	88.2	81.0	67.1	71.5	68.8	61.5	59.8	58.6	45.1	68.0

Station climatologique de Bled RETSMAIA

HUMIDITES RELATIVES OBSERVEES A 13 H.

(Année 1982-1983)

JOUR	SEPT	OCTO	NOVE	DECE	JANV	FEVR	MARS	AVRI	MAI	JUIN	JUIL	AOUT
I	11.7	53.2	85.0	58.7	46.6	57.1	36.0	33.8	37.3	28.6	24.7	35.3
2	42.3	59.3	66.1	94.4	61.5	33.8	38.0	45.0	47.6	49.5	20.9	31.5
3	68.1	58.8	89.7	81.4	57.1	45.6	57.1	43.3	47.9	26.4	37.9	36.5
4	23.9	39.5	67.1	53.9	60.1	41.1	42.2	45.2	22.3	23.9	35.2	53.6
5	24.7	38.1	60.4	87.3	17.4	50.4	49.5	39.0	36.5	21.5	30.6	36.5
6	24.6	26.5	56.0	76.7	33.8	33.9	38.5	27.9	33.0	31.0	25.9	31.6
7	15.9	30.6	67.1	52.0	23.9	32.7	64.9	24.4	27.9	15.1	14.9	35.9
8	49.5	49.2	53.3	52.0	60.1	35.0	49.7	14.7	21.4	21.5	39.8	37.1
9	40.6	32.8	42.8	74.5	67.1	32.7	26.2	16.4	24.0	28.6	31.6	44.1
10	39.8	63.6	85.0	72.0	93.0	41.5	14.9	18.0	39.0	30.6	27.9	46.8
11	40.4	57.8	88.9	54.3	64.3	46.3	51.2	9.0	89.6	21.9	29.3	35.9
12	52.2	47.9	94.2	58.7	48.6	26.4	57.7	13.3	45.7	29.7	23.9	15.9
13	81.2	36.5	79.5	49.2	20.4	27.3	33.8	39.5	23.9	31.8	15.5	25.6
14	52.1	24.7	63.7	55.8	18.7	37.5	33.2	30.7	22.3	25.5	18.9	22.4
15	38.8	59.9	77.5	63.6	48.6	35.2	19.3	40.2	43.8	41.9	21.7	17.6
16	46.4	66.1	78.7	54.7	61.5	36.0	38.0	36.8	35.7	18.7	33.2	27.7
17	55.4	64.0	82.1	59.4	61.5	32.9	74.9	15.1	29.8	22.2	34.6	21.9
18	50.6	65.7	81.4	58.7	40.5	85.1	66.7	15.1	29.1	23.2	27.7	32.3
19	35.2	67.8	73.4	62.8	47.4	51.7	52.8	28.6	21.0	36.5	23.9	43.6
20	30.0	95.0	83.8	50.3	84.1	50.4	26.8	28.9	20.0	35.2	20.4	44.1
21	42.4	77.4	70.2	38.1	49.7	42.2	34.0	24.7	32.7	60.4	13.7	45.7
22	27.9	79.5	69.3	44.1	55.4	41.5	39.0	21.2	41.6	40.2	12.3	47.4
23	57.8	66.1	78.9	77.8	33.9	53.1	47.9	31.6	46.8	29.1	27.6	37.8
24	55.4	95.3	74.6	69.4	31.6	69.5	56.0	50.6	29.3	36.5	15.6	28.4
25	32.5	61.6	61.6	71.8	56.3	67.8	54.8	24.3	39.0	32.5	25.8	54.2
26	39.2	69.8	68.8	79.6	58.7	47.4	55.5	54.6	52.0	33.9	8.3	47.4
27	50.1	70.7	81.4	79.6	42.4	51.2	40.5	35.8	41.2	45.2	8.3	47.4
28	62.2	93.9	83.0	68.9	39.5	46.2	24.7	27.5	42.8	51.6	10.8	54.5
29	53.2	94.4	55.5	70.0	41.2		35.0	52.1	23.1	30.6	13.2	45.1
30	57.4	94.7	64.9	73.5	39.0		67.7	28.6	21.7	36.5	10.6	29.5
31		89.4		66.4	35.0		67.1		33.9		16.7	47.8
Max.	81.2	95.3	94.2	94.4	93.0	85.1	74.9	54.6	89.6	60.4	39.8	54.5
Min.	11.7	24.7	42.8	38.1	17.4	26.4	14.9	9.0	21.4	15.1	8.3	15.9
Moy.	43.4	62.3	72.8	64.8	48.4	44.7	45.0	30.5	35.5	32.0	22.6	37.5

Station climatologique de Eled RETSMAIA

HUMIDITES RELATIVES OBSERVEES A 19 H. (Année 1962-1963)

JOUR	SEPT	OCTO	NOVE	DECE	JANV	FEVR	MARS	AVRI	MAI	JUIN	JUIL	AOUT
I	76.7	67.8	88.9	68.9	70.7	37.5	46.2	39.5	57.8	39.3	37.9	43.6
2	40.8	60.9	84.0	50.4	77.8	73.5	50.7	27.8	40.0	43.8	15.1	39.6
3	50.1	55.1	94.5	78.7	85.7	58.3	71.8	48.8	40.1	31.9	29.9	43.3
4	35.2	50.8	78.5	72.9	62.3	36.4	49.4	42.2	31.4	26.5	32.0	37.8
5	30.6	45.0	77.5	93.5	29.1	62.8	49.4	52.8	48.1	30.6	30.6	46.3
6	35.2	58.9	83.2	93.2	37.5	43.5	42.2	37.8	44.3	25.5	21.9	36.5
7	42.2	31.3	73.4	86.5	31.6	48.4	74.5	41.8	25.8	17.2	45.2	60.4
8	52.7	59.5	78.9	73.5	74.5	36.9	54.7	30.4	23.1	43.8	31.3	36.5
9	48.9	46.5	69.8	86.0	86.0	42.2	36.0	22.2	58.4	28.9	27.9	44.7
10	55.4	77.7	94.7	80.3	86.0	55.5	33.8	23.1	40.1	28.3	20.9	72.8
11	34.3	63.2	88.4	65.7	72.9	27.9	59.4	10.1	89.1	28.8	28.6	25.6
12	81.2	48.8	88.4	67.1	84.1	37.6	60.8	77.1	52.1	29.6	20.4	25.6
13	81.5	46.5	88.5	81.4	47.4	41.1	61.5	52.2	28.6	28.3	20.0	24.8
14	76.4	64.2	94.1	81.4	40.0	86.0	39.0	32.7	26.7	46.6	18.6	28.3
15	58.9	65.6	71.1	78.7	62.3	50.4	19.9	39.1	27.2	54.6	42.8	18.3
16	53.8	72.3	78.7	68.9	63.6	56.3	59.2	36.1	42.8	34.0	29.9	35.8
17	57.8	73.8	81.4	72.4	74.0	44.6	78.8	18.9	24.1	35.0	30.6	31.3
18	61.3	66.5	93.6	76.9	57.1	92.0	86.8	29.3	32.2	44.4	28.6	45.7
19	59.3	77.7	87.9	83.4	49.5	56.6	70.0	55.4	23.1	45.0	18.6	50.1
20	45.1	95.0	87.9	53.6	75.3	63.6	34.9	39.0	16.5	61.7	14.7	45.2
21	83.5	89.6	87.5	60.8	66.5	57.1	49.2	62.1	32.2	70.8	15.9	46.3
22	63.1	94.5	81.7	80.0	57.5	53.9	71.1	47.4	100.0	51.6	10.0	54.2
23	85.8	62.7	93.6	75.8	46.3	62.3	70.7	33.0	47.6	48.5	29.4	40.0
24	67.4	64.5	87.7	67.3	43.5	74.5	27.9	44.2	25.3	27.5	21.9	31.6
25	41.2	72.0	81.1	83.8	65.0	75.8	42.4	42.1	52.7	37.2	30.9	50.1
26	65.3	94.1	71.1	92.5	35.1	67.8	42.2	56.6	43.4	36.5	9.4	46.3
27	78.8	94.1	92.7	92.7	38.0	60.8	50.3	53.3	49.9	34.1	10.5	87.0
28	78.8	94.0	87.9	79.6	44.3	34.1	49.5	37.3	45.8	56.8	12.9	57.8
29	61.3	94.2	74.5	72.4	56.3		63.0	61.7	28.1	34.2	11.9	36.5
30	61.8	94.3	66.4	92.8	60.8		93.0	38.1	38.1	23.1	12.9	16.3
31		83.5		83.8	63.0		60.8		31.0		23.2	44.6
Max.	85.8	95.0	94.7	93.5	86.0	92.0	93.0	77.1	100.0	70.8	45.2	87.0
Min.	30.6	31.3	66.4	50.4	29.1	27.9	19.9	10.1	16.5	17.2	9.4	16.3
Moy.	58.8	69.8	83.6	77.3	59.5	54.9	54.8	41.1	40.8	38.2	23.7	42.0

Station climatologique de Hled RETSMAIA

VITESSES DU VENT A 2.0 M (Relevés de 7H.0) 1982-1983

JOUR	SEPT	OCTO	NOVE	DECE	JANV	FEVR	MARS	AVRI	MAI	JUIN	JUIL	AOUT
1	2.6	2.0	2.2	4.5	1.0	4.2	1.1	1.9	0.6	1.1	2.4	1.3
2	6.9	2.4	1.7	3.1	2.1	2.2	6.2	2.7	4.1	0.0	2.3	1.4
3	2.4	1.1	0.3	0.4	4.3	4.1	9.2	1.6	0.3	1.1	2.0	1.1
4	0.9	1.3	1.2	1.3	3.0	1.7	2.5	2.0	0.7	0.7	0.9	2.1
5	0.9	0.8	1.3	6.5	0.7	1.4	0.6	1.6	0.9	0.7	1.9	2.0
6	2.1	1.7	1.4	3.7	7.8	3.5	0.0	1.7	0.9	0.6	1.4	2.2
7	3.4	1.5	14.3	1.4	3.4	2.2	1.4	1.3	1.3	0.4	2.4	1.4
8	3.0	1.9	3.3	0.6	1.2	1.8	0.1	0.8	2.3	2.2	2.2	1.5
9	1.4	0.9	1.4	1.5	3.4	2.2	0.1	1.3	1.7	2.0	1.3	1.2
10	2.3	1.0	1.0	3.8	8.3	1.0	0.6	0.6	2.0	0.6	1.6	3.1
11	1.3	2.2	2.4	2.9	5.6	6.6	2.2	0.4	2.7	0.4	1.3	1.5
12	1.8	3.6	4.6	6.8	0.5	2.5	10.0	4.6	3.1	3.9	1.4	2.0
13	1.8	1.7	3.3	1.9	0.0	0.9	1.1	4.6	0.9	1.2	3.1	1.6
14	1.6	1.4	2.1	1.8	1.5	1.6	0.3	2.2	2.3	6.1	2.1	1.5
15	1.6	3.3	2.5	3.3	1.0	5.7	1.1	1.9	1.0	11.6	2.6	2.9
16	1.3	2.2	4.9	4.4	7.6	1.8	6.2	1.2	4.7	-	3.1	0.7
17	0.9	1.3	10.3	0.0	12.2	4.2	2.5	1.9	1.3	-	1.7	0.7
18	0.6	1.8	6.1	3.5	1.9	0.2	8.4	3.7	1.1	-	1.0	1.1
19	0.8	2.0	7.0	11.1	1.0	3.1	6.4	0.9	3.3	-	1.4	1.2
20	1.3	4.1	6.9	1.9	5.2	1.5	2.9	1.5	2.1	-	1.5	0.5
21	4.6	4.6	1.1	3.8	5.9	1.9	0.2	0.6	1.2	-	1.4	1.5
22	1.9	2.7	0.2	3.0	5.3	0.9	0.3	3.7	6.8	-	1.1	2.0
23	0.7	4.8	1.2	2.8	2.2	0.5	0.4	0.3	9.6	-	1.5	2.3
24	1.6	1.5	1.0	4.7	1.1	0.2	1.5	3.0	1.6	1.3	1.8	2.1
25	0.7	5.7	0.4	5.9	0.8	0.1	1.8	0.2	2.2	2.3	1.9	2.3
26	0.5	5.1	0.7	6.8	3.2	0.0	13.1	0.8	1.8	1.6	1.1	1.5
27	4.1	4.6	2.3	4.5	0.5	0.7	4.0	4.0	0.7	1.4	1.2	0.7
28	1.2	5.1	10.5	6.5	1.4	3.7	1.4	1.0	5.1	6.5	1.3	0.3
29	2.0	6.2	4.6	3.5	2.6		6.9	0.8	1.7	10.4	1.3	0.7
30	1.3	0.9	0.6	2.9	1.6		8.0	0.7	1.7	2.6	1.0	0.8
31		2.8		0.7	4.0		11.6		3.4		1.7	0.4
Max.	6.9	6.2	14.3	11.1	12.2	6.6	13.1	4.6	9.6	11.6	3.1	3.1
Min.	0.5	0.8	0.2	0.0	0.0	0.0	0.0	0.2	0.3	0.0	0.9	0.3
MOY.	1.9	2.7	3.4	3.5	3.2	2.2	3.6	1.8	2.4	2.7	1.7	1.5

Station climatologique de Hled RETSMAIA

VITESSES DU VENT A 2.0 M (Relevés de 13H.0) 1982-1983

JOUR	SEPT	OCTO	NOVE	DECE	JANV	FEVR	MARS	AVRI	MAI	JUIN	JUIL	AOUT
1	7.7	3.0	5.0	6.1	0.8	5.0	5.2	4.5	2.5	0.1	2.0	1.9
2	6.1	2.3	1.3	2.9	2.3	5.3	11.5	1.7	2.0	0.2	3.4	1.6
3	2.6	1.6	0.5	0.5	5.7	3.9	10.3	0.9	2.2	1.4	1.3	2.0
4	3.1	2.3	4.3	3.1	1.9	2.6	3.4	1.8	3.3	1.5	2.0	2.0
5	1.8	2.4	2.5	5.0	6.9	3.9	0.4	5.0	0.2	1.1	1.6	2.9
6	1.8	6.4	20.8	2.3	5.3	7.3	0.7	3.8	1.4	1.0	3.0	3.1
7	5.8	3.0	6.9	0.7	4.0	5.4	1.2	0.9	4.0	1.7	8.9	1.7
8	2.3	1.2	2.1	4.2	4.5	3.6	0.3	2.9	3.4	2.9	1.7	1.9
9	2.3	2.2	1.4	0.9	6.8	1.8	0.9	1.1	3.5	3.3	1.5	2.2
10	2.7	2.1	3.8	7.5	9.1	1.8	1.3	0.7	4.2	1.9	1.5	3.3
11	1.5	1.2	4.1	4.1	2.6	7.3	4.3	2.6	1.8	1.6	2.2	1.3
12	2.0	3.5	5.3	4.1	0.1	1.9	8.2	5.2	1.9	5.7	2.3	2.6
13	2.1	3.7	2.5	3.4	0.0	1.8	2.9	5.3	3.7	2.8	2.0	3.7
14	1.7	7.4	4.1	0.0	0.7	0.8	2.3	4.2	3.2	16.0	2.8	5.2
15	1.9	2.3	1.5	6.4	3.3	5.9	5.3	4.2	1.9	-	5.8	2.5
16	1.7	2.0	10.9	3.5	8.2	4.7	8.8	5.0	5.2	-	2.6	3.1
17	1.1	3.8	12.7	2.6	8.5	2.4	6.7	5.1	2.6	-	1.5	4.3
18	1.5	3.0	5.9	5.2	1.3	0.9	8.7	5.1	2.1	-	1.6	2.7
19	1.5	2.2	5.9	6.5	2.2	5.0	7.3	2.3	4.8	-	1.3	1.6
20	1.3	3.3	5.0	21.9	11.9	2.7	2.7	1.7	2.9	-	0.8	0.9
21	3.1	4.6	1.1	2.9	10.2	0.7	2.7	2.4	2.7	-	0.9	1.1
22	3.4	2.3	1.5	3.0	3.8	3.3	1.2	2.1	6.2	-	0.8	1.8
23	2.6	4.8	2.9	7.6	0.0	0.7	1.8	1.2	11.4	3.2	1.1	1.6
24	1.0	2.6	4.4	9.4	0.2	0.5	0.0	3.1	3.7	1.8	1.7	4.0
25	1.3	6.3	1.5	7.4	1.8	0.1	1.2	1.5	2.0	2.1	4.6	1.6
26	2.2	6.5	2.1	6.6	0.9	2.1	10.7	2.0	1.7	1.4	1.6	1.1
27	3.7	3.6	5.5	10.1	2.5	3.7	7.2	3.0	3.1	1.5	2.2	1.3
28	3.5	7.9	10.2	6.4	7.1	4.5	6.6	2.2	5.4	13.0	1.4	2.1
29	2.0	3.0	1.9	3.1	1.4		4.7	0.6	2.4	7.1	1.3	5.2
30	0.9	2.5	3.9	2.8	2.4		10.9	1.4	6.0	2.8	1.1	2.1
31		4.0		1.4	3.9		10.9		1.7		1.4	1.6
Max.	7.7	7.9	20.8	21.9	11.9	7.3	11.5	5.3	11.4	16.0	8.9	5.3
Min.	0.9	1.2	0.5	0.0	0.0	0.1	0.0	0.6	0.2	0.1	0.8	0.9
MOY.	2.5	3.5	4.7	4.9	3.9	3.2	4.9	2.8	3.3	3.4	2.2	2.4

Station climatologique de Hied KETSMALA

VITESSES DU VENT A 2.0 M (Relevés de 19H.0) 1982-1983

JOUR	SEPT	OCTO	NOVE	DECE	JANV	FEVR	MARS	AVRI	MAI	JUN	JUIL	AOUT
1	8.3	3.9	0.6	5.8	1.5	3.1	2.3	5.6	3.5	0.1	2.9	5.6
2	2.9	2.6	1.7	1.3	3.8	6.9	12.2	2.6	1.7	3.0	5.5	4.9
3	3.0	3.8	1.4	1.4	5.3	4.4	7.1	2.9	2.6	3.9	2.9	3.9
4	5.2	2.8	3.2	4.0	1.4	2.9	2.6	3.0	3.7	2.5	3.2	2.4
5	3.6	2.3	2.8	4.1	5.7	1.8	1.8	5.1	3.0	3.6	3.5	7.1
6	2.8	6.1	4.1	2.2	3.6	9.2	2.8	3.4	3.6	2.5	7.9	3.5
7	5.0	7.5	5.6	1.1	3.4	5.2	1.8	2.2	9.2	3.1	7.6	4.3
8	3.3	2.5	2.8	4.7	6.5	7.6	1.2	3.3	4.0	4.0	3.3	4.2
9	3.0	3.3	2.4	1.9	6.9	3.7	2.3	2.7	6.9	2.7	2.8	3.0
10	3.5	3.6	4.3	6.1	7.0	7.1	1.9	2.7	5.8	2.0	2.6	4.0
11	3.0	4.0	4.7	9.8	2.0	7.3	5.8	2.9	2.3	2.5	3.2	4.0
12	1.0	3.4	4.2	3.2	0.3	4.3	7.1	7.6	1.7	4.0	3.2	3.9
13	0.4	2.2	0.6	1.1	1.5	6.1	3.1	5.4	2.4	2.8	3.5	6.5
14	2.6	12.8	5.2	0.9	0.8	4.9	3.1	4.8	5.1	9.9	4.3	4.6
15	2.8	2.0	1.9	6.3	4.0	4.4	9.0	3.7	5.1	-	5.4	4.1
16	2.6	2.9	8.4	1.1	11.5	3.5	8.2	6.6	4.7	-	3.2	4.7
17	2.5	3.6	0.1	2.2	5.0	2.8	6.2	6.2	3.0	-	2.6	5.0
18	2.5	4.9	7.7	8.7	3.3	2.2	6.7	5.0	3.6	-	2.7	4.0
19	2.9	5.5	8.3	8.8	2.9	4.0	2.9	4.4	4.6	-	3.6	4.0
20	3.2	3.9	3.9	2.5	7.4	4.3	3.4	3.9	5.2	-	3.4	3.0
21	2.6	6.6	0.8	4.3	7.4	1.0	2.1	8.0	5.9	-	3.1	2.7
22	4.9	4.8	2.0	3.7	3.1	2.0	3.9	3.9	3.8	-	2.6	3.0
23	2.5	5.1	3.6	5.9	0.2	2.1	2.2	3.9	4.2	4.0	2.7	4.2
24	2.1	2.3	3.1	8.9	0.1	2.3	3.3	3.1	2.6	2.2	3.7	6.4
25	3.2	4.7	3.1	8.5	3.6	2.2	10.7	3.6	6.1	3.5	4.4	2.7
26	4.1	4.2	3.4	5.8	0.1	3.2	5.8	3.5	2.8	5.0	4.5	2.6
27	4.5	3.3	6.7	2.9	2.5	4.5	3.6	2.7	4.0	3.1	3.7	3.8
28	2.6	11.8	5.0	5.2	7.1	3.4	9.5	5.3	4.1	5.9	3.0	5.0
29	2.5	2.1	0.9	2.0	3.4		4.4	1.3	3.0	3.8	2.4	6.2
30	2.7	3.4	5.2	0.4	3.9		11.6	1.2	6.7	3.3	3.1	4.5
31		3.6		1.9	5.8		8.8		1.6		3.3	3.8
Max.	8.3	12.8	8.4	9.8	11.5	9.2	12.2	8.0	9.2	9.9	7.9	7.1
Min.	0.4	2.0	0.2	0.4	0.1	1.0	1.2	1.2	1.6	0.1	2.4	2.4
MOY.	3.2	4.4	3.6	4.1	3.9	4.2	5.1	4.0	4.1	3.5	3.7	4.2

Station climatologique de Hled RETSMAIA

VITESSES MOYENNES JOURNALIERES, MENSUELLES ET ANNUELLE DU VENT A 2.0 M.

1982-1983

JOUR	SEPR	OCTO	NOVE	DECE	JANV	FEVR	MARS	AVRI	MAI	JUIN	JUIL	AOUT
1	5.3	2.7	2.5	5.2	1.1	4.1	2.5	3.5	1.8	0.6	2.4	2.5
2	5.7	2.4	1.6	2.6	2.6	4.1	9.0	2.4	3.0	0.8	3.4	2.3
3	2.6	1.9	0.6	0.7	4.9	4.1	9.0	1.7	1.4	1.8	2.0	2.1
4	2.5	1.9	2.5	2.4	2.3	2.2	2.8	2.2	2.1	1.3	1.8	2.1
5	1.8	1.6	2.0	5.5	3.5	2.1	0.9	3.3	1.3	1.5	2.2	3.5
6	2.2	4.0	6.9	3.0	6.1	5.9	0.9	2.6	1.7	1.2	3.5	2.7
7	4.4	3.4	10.3	1.1	3.6	3.8	1.5	1.4	4.0	1.4	5.3	2.2
8	2.9	1.9	2.9	2.5	3.4	3.7	0.4	1.9	3.0	2.8	2.3	2.2
9	2.0	1.8	1.6	1.5	5.1	2.5	0.9	1.6	3.4	2.5	1.7	1.9
10	2.7	1.9	1.8	5.3	8.2	2.7	1.1	1.1	3.5	1.3	1.8	3.4
11	1.8	2.4	3.4	4.9	3.9	6.9	3.6	1.6	2.4	1.2	2.0	2.1
12	1.6	3.5	4.7	5.2	0.4	2.8	8.7	5.5	2.4	4.4	2.1	2.6
13	1.5	2.3	2.4	2.1	0.4	2.4	2.0	5.0	2.0	2.0	2.9	3.3
14	1.9	5.8	3.3	1.1	1.1	2.3	1.5	3.4	3.2	9.5	2.8	3.2
15	2.0	2.7	2.1	4.8	2.3	5.4	4.1	2.9	2.2	-	4.1	3.1
16	1.7	2.3	7.3	3.4	8.7	3.0	7.4	3.5	4.8	-	3.0	2.3
17	1.4	2.4	8.3	1.2	9.5	3.5	4.5	3.8	2.1	-	1.9	2.7
18	1.3	2.9	6.4	5.2	2.1	0.9	8.1	4.4	2.0	-	1.5	2.2
19	1.5	3.0	7.1	9.4	1.8	3.8	5.8	2.1	4.0	-	1.9	2.0
20	1.8	3.9	5.7	7.1	7.4	2.5	3.0	2.1	3.1	-	1.8	1.2
21	3.7	5.1	1.1	3.7	7.3	1.4	1.3	2.9	2.8	-	1.7	1.7
22	3.0	3.1	1.0	3.2	4.4	1.8	1.4	3.3	5.9	-	1.4	2.3
23	1.6	4.9	2.2	4.8	1.1	0.9	1.2	1.4	8.7	-	1.7	2.6
24	1.6	2.0	2.4	6.9	0.7	0.8	1.6	3.1	2.4	1.7	2.3	3.7
25	1.5	5.6	1.4	6.9	1.8	0.6	3.9	1.4	3.1	2.5	3.2	2.2
26	1.9	5.2	1.7	6.5	1.9	1.3	10.7	1.8	2.0	2.4	2.1	1.7
27	4.1	4.0	4.2	5.5	1.5	2.4	4.7	3.4	2.1	1.8	2.1	1.6
28	2.1	7.5	9.0	6.1	4.2	3.8	4.7	2.4	4.9	8.0	1.8	1.9
29	2.1	4.4	3.0	3.0	2.5		5.7	0.9	2.2	7.9	1.6	3.2
30	1.6	1.9	2.6	2.3	2.4		9.6	1.0	4.0	2.8	1.6	2.0
31		3.3		1.1	4.4		10.7		2.6		2.0	1.6
Max.	5.7	7.5	10.3	9.4	9.5	6.9	10.7	5.5	8.7	9.5	5.3	3.7
Min.	1.3	1.6	0.6	0.7	0.4	0.6	0.4	0.9	1.3	0.6	1.4	1.2
MOY.	2.4	3.3	3.7	4.0	3.6	2.9	4.3	2.6	3.0	2.7	2.3	2.4

Station climatologique de Bled RETSMAIA

EVAPORATION PICHE JOURNALIERE MENSUELLE ET ANNUELLE (Année 1982-1983)

JOUR	SEPT	OCTO	NOVE	DECE	JANV	FEVR	MARS	AVRI	MAI	JUIN	JUIL	AOUT
1	16.3	3.5	1.2	4.0	2.7	9.2	7.7	5.3	8.3	13.3	11.1	9.8
2	7.4	3.5	1.6	2.9	2.8	8.5	10.3	4.4	4.9	10.9	13.4	12.3
3	5.1	4.7	0.8	1.4	3.5	3.9	4.9	3.3	7.6	9.2	7.7	10.3
4	11.6	5.5	2.6	3.6	4.0	4.8	4.0	3.9	13.0	13.4	10.8	7.2
5	12.0	6.7	2.0	1.3	15.7	4.5	3.8	4.0	5.9	11.8	12.2	11.4
6	12.4	10.1	3.2	1.9	10.4	12.8	4.7	4.1	7.0	10.8	20.8	10.0
7	16.5	9.6	4.7	2.4	7.9	7.4	2.0	4.4	14.7	14.7	21.6	10.0
8	6.0	3.9	3.3	3.7	3.6	9.1	3.3	10.1	10.5	11.9	9.6	12.5
9	8.8	6.3	3.3	2.1	3.0	7.6	6.5	8.7	8.9	10.3	11.4	8.9
10	7.5	5.0	0.9	2.5	2.6	10.0	9.9	10.8	10.5	10.6	10.6	6.3
11	6.3	6.0	2.4	4.5	1.9	5.7	8.5	16.1	1.9	16.2	13.8	10.9
12	2.8	6.7	1.2	3.4	2.1	7.1	5.7	9.2	5.6	14.4	10.4	12.5
13	2.0	8.6	1.4	3.0	5.0	8.9	6.0	6.9	10.6	12.0	13.4	13.2
14	3.0	9.9	2.1	2.7	6.5	5.6	7.1	6.1	12.8	12.6	15.4	15.0
15	6.1	4.6	1.8	5.0	6.1	7.0	17.3	5.2	9.4	11.5	13.6	12.5
16	5.8	3.2	3.2	2.9	7.5	6.3	7.8	8.5	8.2	14.3	9.2	10.5
17	4.6	4.8	6.0	4.4	4.5	4.3	4.9	11.7	8.3	10.3	9.4	12.8
18	4.9	6.8	4.5	6.7	5.5	0.6	7.0	6.7	11.9	13.7	9.8	10.7
19	7.7	5.4	4.5	5.0	7.3	3.5	4.5	4.3	14.5	7.9	11.1	6.1
20	10.1	1.9	3.2	5.1	3.5	4.0	8.3	4.9	14.0	5.1	12.6	7.5
21	5.7	3.5	2.2	6.5	6.5	3.2	7.4	5.8	16.2	5.3	13.7	6.8
22	6.4	5.6	4.3	6.2	5.5	4.1	5.2	2.5	5.9	6.9	15.1	6.9
23	3.0	8.4	3.5	3.5	5.2	2.5	5.0	2.5	10.6	10.8	16.1	10.2
24	4.5	7.0	3.9	4.3	5.9	1.4	6.1	2.3	9.1	10.7	19.3	13.8
25	8.0	5.5	2.4	3.5	3.6	1.8	7.0	4.4	9.2	10.2	17.7	5.4
26	8.9	3.5	3.8	2.0	3.5	4.6	6.2	5.2	5.3	8.6	19.1	7.7
27	4.5	2.8	3.1	2.5	8.3	5.0	4.5	6.4	6.3	8.9	17.9	9.4
28	3.6	1.4	5.9	3.4	11.2	5.6	5.8	10.9	7.9	10.8	16.2	10.4
29	4.1	0.3	2.8	2.3	5.7		4.6	5.0	9.9	12.3	13.7	19.5
30	4.0	1.1	3.9	1.0	9.0		2.7	9.8	18.5	12.1	15.5	14.2
31		0.8		1.6	8.4		3.8		11.5		11.6	8.5

209.6 156.5 89.7 105.3 178.9 159.0 192.5 193.4 298.9 331.5 423.8 323.2

Total annuel : 2662.3 mm

Station climatologique de Bled RETSMAIA

EVAPORATION PICHE - OBSERVATIONS A 7 H.00 (Année 1982-1983)

JOUR	SEPT	OCTO	NOVE	DECE	JANV	FEVR	MARS	AVRI	MAI	JUIN	JUIL	AOUT
I	3.0	I.0	0.2	I.0	I.0	3.8	3.5	I.9	2.1	3.6	3.7	2.8
2	2.2	0.5	0.2	0.7	I.0	2.0	3.4	I.4	I.6	3.4	3.1	4.6
3	I.2	I.4	0.5	0.4	I.0	0.9	I.1	I.0	2.1	2.8	2.4	3.5
4	2.5	I.3	0.4	I.3	2.2	2.1	I.2	I.4	3.5	4.0	3.7	2.4
5	4.2	I.8	0.3	0.8	8.4	2.0	0.9	I.5	2.0	2.8	4.5	2.4
6	5.9	0.7	0.6	0.7	4.5	5.0	I.3	I.4	I.2	3.1	6.7	3.1
7	2.4	I.8	I.2	0.1	I.9	2.4	0.7	I.8	4.0	4.4	2.5	3.2
8	I.8	0.7	0.4	0.8	I.0	2.3	0.8	2.5	2.5	2.6	2.8	3.7
9	4.0	I.1	0.3	0.9	I.0	2.1	2.3	2.4	2.8	I.6	3.7	2.4
10	I.0	2.0	0.3	I.1	I.5	3.2	3.9	3.4	2.5	3.3	3.3	I.4
11	I.8	I.5	I.5	I.5	0.4	0.7	3.5	8.1	I.4	7.7	4.8	3.8
12	0.6	2.3	0.5	I.0	0.9	2.3	I.7	I.3	I.5	3.6	0.8	3.4
13	0.7	2.9	0.4	I.5	2.0	2.4	0.5	I.5	4.0	4.6	4.7	3.3
14	0.7	2.4	0.3	I.1	3.0	I.8	2.4	I.5	3.5	2.8	5.6	5.0
15	I.3	2.1	0.9	I.4	3.1	2.0	4.4	I.2	2.4	3.0	2.5	2.1
16	I.1	0.2	I.5	0.9	3.0	I.8	I.6	2.5	I.8	3.2	2.2	2.0
17	I.1	I.2	3.5	2.5	I.4	I.1	I.4	4.6	I.8	I.6	3.5	2.3
18	I.1	I.8	I.4	3.0	2.0	0.2	3.9	I.7	5.0	2.5	2.8	2.0
19	2.1	0.9	I.6	2.9	0.4	I.0	2.0	2.0	3.9	0.7	4.8	2.2
20	2.9	0.1	0.7	2.1	I.9	I.0	I.0	I.5	4.5	2.0	3.6	2.4
21	0.5	I.0	0.3	2.3	I.6	I.2	2.0	0.7	4.4	I.5	4.7	2.1
22	0.8	2.5	I.8	0.9	3.0	0.6	I.0	0.8	I.4	2.2	5.9	2.8
23	0.9	2.4	0.5	I.5	2.5	0.6	I.4	I.3	2.0	3.0	6.4	3.1
24	0.9	2.6	I.0	I.6	2.1	0.2	3.0	I.1	2.7	4.0	8.3	2.3
25	2.0	I.6	0.7	I.2	I.4	0.5	3.5	I.5	I.5	3.2	4.6	I.8
26	2.2	I.0	I.3	0.9	I.7	I.2	2.5	2.2	I.5	2.7	4.9	2.3
27	0.9	0.8	I.9	I.1	2.9	2.2	I.3	I.1	2.2	2.8	5.5	2.6
28	0.4	0.3	2.0	I.4	3.2	I.5	2.3	I.5	2.7	3.9	5.5	2.8
29	0.4	0.1	0.7	0.8	2.0		I.5	2.0	2.9	3.1	4.9	4.7
30	I.0	0.2	I.7	0.4	4.5		0.7	3.7	6.1	3.8	5.9	4.6
31		0.0		0.3	2.7		I.4		2.6		2.5	2.7
Tot.	52.0	40.1	28.6	37.7	69.2	48.1	62.1	60.5	84.1	93.5	131.2	89.8
Moy. mm/j	I.7	I.3	0.9	I.2	2.2	I.7	2.0	2.0	2.7	3.1	4.4	2.9

Station climatologique de Bled RETSMAIA

EVAPORATION PICHE - OBSERVATIONS A 13 H. (Année 1982-1983)

JOUR	SEPT	OCTO	NOVE	DECE	JANV	FEVR	MARS	AVRI	MAI	JUIN	JUIL	AOUT
I	9.0	I.1	0.5	I.5	I.0	2.4	2.7	I.4	2.5	3.9	3.0	I.5
2	2.5	0.8	0.5	I.3	0.8	3.4	2.8	I.3	I.4	3.4	3.9	2.1
3	I.3	I.1	0.1	0.5	I.5	I.1	I.7	0.7	I.1	3.3	I.5	2.9
4	2.6	I.6	I.1	I.1	0.6	I.4	0.8	I.0	4.2	3.4	2.8	I.6
5	2.8	2.0	0.8	0.3	3.3	I.3	0.8	I.1	I.1	2.8	2.6	2.3
6	2.5	4.6	I.9	0.5	3.0	3.3	0.9	I.2	I.4	3.0	4.5	2.3
7	7.6	2.3	I.5	I.0	3.0	I.6	0.5	I.5	2.8	3.8	9.3	2.4
8	I.3	0.7	I.1	I.1	0.8	2.0	0.7	3.1	3.5	4.2	2.3	2.9
9	I.7	2.0	I.1	0.5	I.1	I.5	I.3	2.0	2.6	3.9	2.7	2.8
10	3.5	0.9	0.2	0.6	0.6	2.1	2.0	2.4	3.5	3.2	2.5	I.4
11	I.5	I.5	0.2	I.3	0.4	2.0	2.4	3.1	0.2	3.5	3.0	I.7
12	I.3	I.8	0.2	I.2	0.2	I.5	I.3	4.5	I.4	5.6	4.1	3.6
13	0.5	3.2	0.5	0.7	I.0	2.0	2.1	2.6	2.6	2.9	3.1	4.2
14	I.0	2.7	0.8	0.7	I.5	I.5	I.7	I.6	3.6	5.3	4.0	4.7
15	I.6	I.0	0.2	I.2	I.2	2.0	4.9	I.6	I.7	3.8	5.6	4.0
16	I.4	I.0	0.8	I.3	I.4	3.0	3.5	2.3	2.9	4.4	2.6	2.5
17	I.0	I.1	I.1	0.9	I.7	I.3	I.9	3.2	2.5	3.0	2.2	4.3
18	I.3	I.8	2.2	I.3	I.1	0.3	I.6	2.6	2.5	5.8	2.5	3.3
19	2.2	I.5	I.1	0.7	2.5	I.1	I.6	I.3	4.5	I.8	2.3	I.8
20	2.4	0.3	I.4	I.2	I.6	I.1	2.4	0.9	3.7	I.9	2.4	I.4
21	3.0	0.2	0.9	I.6	2.8	0.5	2.6	3.5	3.3	I.9	3.1	I.0
22	I.9	I.1	0.9	I.3	0.8	2.0	I.7	0.2	3.0	I.4	3.4	I.7
23	I.8	2.1	I.3	0.9	0.9	0.6	I.3	0.2	2.9	3.2	3.8	2.4
24	I.5	I.8	I.4	I.3	I.5	0.3	0.7	0.5	2.9	2.1	4.1	4.5
25	I.7	I.8	0.8	I.1	0.7	0.4	I.4	I.2	I.8	2.8	6.5	0.9
26	3.6	I.4	0.9	I.4	0.7	I.1	I.8	0.1	I.2	2.8	5.3	I.7
27	I.6	0.7	0.4	I.0	3.0	0.7	I.8	2.8	I.6	2.1	5.3	2.4
28	I.3	0.2	2.5	I.0	3.9	I.5	I.7	3.1	2.2	3.1	4.4	I.9
29	I.4	0.1	I.1	0.8	I.4		I.8	I.0	2.7	4.5	3.6	6.0
30	0.8	0.3	0.6	0.4	I.5		0.8	3.4	5.9	3.5	3.5	3.4
31		0.6		0.3	2.6		0.8		5.7		3.1	I.8
Tot.	66.6	43.3	28.1	30.0	48.1	43.0	54.0	55.4	82.9	100.5	113.0	81.4
Moy. mm/j	2.2	I.4	0.9	I.0	I.5	I.5	I.7	I.8	2.7	3.3	3.6	2.6

Station climatologique de Eled NETSMAIA

EVAPORATION PICHE - OBSERVATIONS A 19 H. (Année 1982-1983)

JOUR	SEPT	OCTO	NOVE	DECE	JANV	FEVR	MARS	AVRI	MAI	JUIN	JUIL	AOUT
1	4.3	2.4	0.5	1.5	0.7	3.0	1.5	2.0	3.7	5.8	4.4	5.5
2	2.7	2.2	0.9	0.9	1.0	3.1	4.1	1.7	1.9	4.1	6.4	5.6
3	2.2	2.2	0.2	0.5	1.0	1.9	2.1	1.6	3.4	3.1	1.5	3.9
4	6.6	2.6	1.1	1.2	1.2	1.3	2.0	1.5	5.3	6.0	4.3	3.2
5	5.0	2.9	0.9	0.2	4.0	1.2	2.1	1.4	2.8	6.2	5.1	6.7
6	4.0	4.8	0.7	0.7	2.9	4.5	2.5	1.5	4.4	4.7	9.6	4.6
7	6.5	5.5	2.0	1.3	3.0	3.4	0.8	1.1	7.9	6.5	9.4	4.4
8	2.9	2.5	1.8	1.8	1.8	4.8	1.8	4.5	4.5	5.1	4.5	5.9
9	3.1	3.2	1.9	0.7	0.9	4.0	2.9	4.3	3.5	4.8	5.0	3.7
10	3.0	2.1	0.4	0.8	0.5	4.7	4.0	5.0	4.5	4.1	4.8	3.5
11	3.0	3.0	0.7	1.7	1.1	3.0	2.6	4.9	0.3	5.0	6.0	5.4
12	0.9	2.6	0.5	1.2	1.0	3.3	2.7	3.4	2.7	5.0	5.5	5.5
13	0.8	2.5	0.5	0.8	2.0	4.5	3.4	2.8	4.0	4.5	5.6	5.7
14	1.3	4.8	1.0	0.9	2.0	2.3	3.0	3.0	5.7	4.5	5.8	5.3
15	3.2	1.5	0.7	2.4	1.8	3.0	8.0	2.4	5.3	4.7	5.5	6.4
16	3.3	2.0	0.9	0.7	3.1	1.5	2.7	3.7	3.5	6.7	4.4	6.0
17	2.5	2.5	1.4	1.0	1.4	1.9	1.6	3.9	4.0	5.7	3.7	6.2
18	2.5	3.2	0.9	2.4	2.4	0.1	1.9	2.4	4.4	5.4	4.5	5.4
19	3.4	3.0	1.8	1.4	2.9	1.4	1.9	1.5	5.5	4.1	5.2	1.9
20	4.8	0.6	1.1	1.8	1.5	1.9	3.9	2.0	6.4	2.5	5.4	3.9
21	2.2	2.3	1.0	2.6	2.1	1.5	2.8	1.6	6.5	1.9	5.9	3.7
22	3.7	2.0	1.6	2.2	1.7	1.5	2.5	1.5	1.5	3.3	5.8	3.1
23	1.3	3.9	1.7	1.1	1.8	1.3	2.3	1.0	5.7	4.6	5.9	4.7
24	2.1	2.6	1.5	1.4	2.3	0.9	2.4	0.7	3.5	4.6	6.9	7.0
25	4.3	2.1	1.9	1.2	1.5	0.9	2.1	1.7	5.9	4.2	6.6	2.7
26	3.1	1.1	1.6	0.1	1.1	2.3	1.9	2.9	2.6	3.1	8.9	3.7
27	2.0	1.3	0.8	0.4	2.4	2.1	1.4	2.5	2.5	4.0	7.1	4.4
28	1.9	0.9	1.4	1.0	4.1	2.6	1.8	6.3	3.0	3.8	6.3	5.7
29	2.3	0.1	1.0	0.7	2.3		1.3	2.0	4.3	4.7	5.2	8.8
30	2.2	0.6	1.6	0.3	3.0		1.2	2.7	6.5	4.8	6.1	6.2
31		0.2		0.9	3.1		1.6		3.2		6.0	4.0
Tot.	91.1	73.2	34.0	35.8	61.6	67.9	76.8	77.5	130.9	137.5	179.6	157.1
Moy. mm/j	3.0	2.4	1.1	1.1	1.9	2.4	2.5	2.6	4.2	4.6	5.8	5.1

Station climatologique de Bled RETSKAIA

EVAPORATION MOYENNE JOURNALIERE MENSUELLE ET ANNUELLE. (Bac Colorado)
(Année 1982-1983)

JOUR	SEPT	OCTO	NOVE	DECE	JANV	FEVR	MARS	AVRI	MAI	JUIN	JUIL	AOUT
1	15.0	2.0	-4.5	2.0	1.0	3.0	5.0	4.0	6.5	10.0	8.5	10.0
2	7.5	5.0	2.0	3.0	1.5	5.0	6.0	3.5	6.5	8.0	15.0	11.0
3	5.0	6.0	-4.0	1.0	1.0	3.0	5.0	5.0	6.5	10.0	7.5	9.0
4	9.0	5.0	2.0	2.0	1.0	3.0	4.0	3.0	6.5	10.0	9.0	10.0
5	9.5	6.0	2.0	-5.0	5.0	3.0	1.5	5.5	5.0	10.5	9.5	11.0
6	10.0	8.0	3.0	2.0	5.0	6.0	2.5	6.0	6.5	9.0	16.0	12.5
7	10.5	8.0	3.0	2.5	7.0	5.5	1.5	4.5	11.5	13.0	14.0	10.0
8	7.0	4.0	2.0	1.0	3.0	4.0	2.5	7.5	8.0	13.0	11.0	10.0
9	5.5	5.5	2.5	-8.0	0.0	4.0	4.5	6.5	9.0	10.5	11.0	10.5
10	6.0	6.0	-17.0	2.0	1.0	4.4	5.5	7.5	3.0	10.0	10.0	8.0
11	7.0	5.5	-5.0	0.0	1.0	3.0	8.0	12.5	4.6	13.2	10.5	13.0
12	2.0	5.0	-4.0	2.0	1.0	5.0	4.0	12.0	3.0	11.5	12.5	11.5
13	-2.0	6.5	1.5	2.0	1.0	3.0	3.0	7.5	9.0	10.0	12.0	13.5
14	2.0	8.0	2.5	1.0	2.0	3.6	4.5	7.0	9.0	11.0	14.0	13.0
15	4.5	6.0	2.0	3.0	3.0	4.5	9.0	5.5	9.0	11.5	13.0	13.0
16	4.5	3.0	2.5	1.0	3.0	4.0	8.0	5.5	8.0	11.5	12.5	10.0
17	4.5	5.0	4.0	3.0	4.0	1.5	3.6	10.5	11.0	10.0	5.0	11.0
18	5.5	6.0	2.0	2.0	3.0	2.0	3.7	7.0	12.0	14.0	11.0	13.0
19	6.0	4.5	2.0	3.0	4.0	1.0	1.5	8.0	13.0	9.5	13.0	5.0
20	8.0	-6.0	3.0	2.5	0.0	2.0	5.5	6.0	13.0	14.0	11.5	6.0
21	-4.0	-5.0	2.0	3.0	5.0	2.0	5.0	11.0	14.0	4.0	12.0	8.5
22	6.5	6.0	1.0	2.0	3.0	3.0	2.7	5.0	5.0	7.0	12.5	7.5
23	0.0	4.0	2.0	2.5	3.0	2.0	3.0	5.0	3.0	8.0	14.0	9.0
24	2.0	5.0	2.0	2.0	3.0	2.0	4.0	5.5	9.0	8.5	15.5	11.5
25	6.5	6.0	2.5	2.0	2.0	2.4	8.7	6.0	9.0	8.0	15.0	9.0
26	7.0	2.5	2.0	-9.0	3.0	2.0	8.0	7.0	6.0	11.0	16.0	9.0
27	6.5	2.5	-4.0	1.0	3.5	4.0	2.5	6.0	8.0	10.0	14.0	8.5
28	5.0	-13.0	2.5	2.0	4.0	4.0	7.0	8.5	7.0	16.0	12.0	9.0
29	6.0	-12.5	1.0	1.0	3.0		6.0	5.0	8.5	11.0	13.0	14.0
30	5.0	-5.0	0.0	1.0	4.0		3.4	6.0	13.0	10.5	13.0	14.0
31		2.0		1.0	5.5		2.0		6.0		12.0	8.0
Tot.	188.8	139.4	58.6	53.6	87.7	91.9	141.1	199.5	249.1	304.2	375.5	319.0
Moy. mm/j	6.3	4.5	1.9	1.7	2.8	3.3	4.5	6.6	8.0	10.1	12.1	10.3

Station climatologique de Eled RETSMAIA

TEMPERATURES DE L'EAU DU BAC COLORADO A 7 H. (Année 1982-1983)

JOUR	SEPT	OCTO	NOVE	DECE	JANV	FEVR	MARS	AVRI	MAI	JUIN	JUIL	AOUT
1	20.0	20.0	14.0	5.0	1.0	5.0	7.0	4.5	16.5	19.0	20.0	23.0
2	16.0	19.0	13.0	6.0	-1.0	7.0	6.5	8.0	14.5	19.5	21.0	24.0
3	17.0	20.0	15.0	6.0	3.0	6.0	3.0	10.0	14.0	18.0	20.0	23.5
4	20.0	18.0	13.0	6.0	4.0	4.5	5.0	11.0	16.4	19.5	21.0	23.0
5	19.0	18.0	13.0	6.0	4.0	5.0	5.0	8.0	16.3	21.0	21.5	18.5
6	21.0	18.0	11.0	6.0	5.0	4.0	5.0	9.0	17.0	19.5	22.0	23.5
7	19.0	17.0	11.0	6.0	5.0	5.0	7.5	10.5	18.0	20.5	22.0	22.5
8	21.0	15.0	12.0	5.0	5.0	5.5	6.5	10.5	18.0	19.5	22.0	22.0
9	18.0	15.0	11.0	5.0	5.0	5.0	7.0	12.0	17.5	18.5	23.0	22.5
10	20.0	16.0	12.0	6.0	5.0	5.5	8.0	13.0	16.0	19.0	22.5	24.5
11	22.0	15.0	13.0	7.0	4.0	4.5	9.5	13.5	17.0	21.0	23.0	24.5
12	21.0	14.0	11.0	5.0	-2.0	2.0	8.0	7.0	14.0	19.5	22.5	21.5
13	10.9	13.0	11.0	5.0	0.5	0.5	8.0	10.5	17.0	20.5	21.5	21.0
14	18.0	15.0	12.0	7.0	0.0	4.0	8.0	11.0	18.5	17.5	21.5	20.0
15	17.0	15.0	12.0	0.6	3.0	4.0	10.0	9.0	17.0	14.5	20.5	19.0
16	18.0	16.0	8.0	4.0	5.0	5.0	9.5	9.0	17.0	16.5	20.5	19.5
17	20.0	18.0	5.0	7.0	5.0	5.0	6.5	10.0	17.0	10.5	21.0	22.0
18	20.0	16.0	6.0	5.0	5.0	6.0	5.0	11.5	18.0	19.5	24.5	22.0
19	20.0	16.0	7.0	0.1	5.0	4.0	7.0	13.0	17.5	18.5	23.0	22.5
20	20.0	17.0	8.0	0.1	5.0	3.0	8.0	14.0	17.5	19.5	22.0	22.0
	21.0	17.0	8.0	3.0	0.0	4.0	10.0	15.5	19.0	13.5	22.0	24.0
22	20.0	13.0	7.0	4.0	2.0	5.0	11.5	14.5	15.0	20.0	22.5	23.5
23	20.0	11.0	7.0	5.0	-1.0	6.0	13.0	14.5	10.0	21.0	22.5	22.5
24	18.0	11.0	7.0	0.0	2.0	7.5	13.5	13.0	14.5	19.5	22.5	22.5
25	19.0	11.0	8.0	1.0	3.0	8.0	13.0	12.0	15.5	20.0	21.5	21.5
26	18.0	10.0	8.0	3.0	3.0	9.0	3.0	15.0	16.0	21.0	21.5	21.5
27	18.0	11.0	8.0	6.0	1.0	9.5	6.0	15.0	17.0	21.0	20.5	23.5
28	20.0	10.0	5.0	1.0	4.0	7.0	7.5	15.5	14.0	21.0	21.5	21.5
29	20.0	11.0	6.0	7.0	5.0		6.0	16.0	16.0	17.0	22.5	22.0
30	19.0	11.0	8.0	5.0	5.0		6.0	16.0	17.5	19.5	23.0	22.5
31		12.0		2.0	6.0		5.0		18.0		22.0	22.0

Station climatologique de Eled RETSMAIA

TEMPERATURES DE L'EAU DU BAC COLORADO A 13 H. (Année 1982-1983)

JOUR	SEPT	OCTO	NOVE	DECE	JANV	FEVR	MARS	AVRI	MAI	JUIN	JUIL	AOUT
1	24.0	25.0	16.0	8.0	10.0	12.0	11.5	16.0	22.5	26.0	27.0	30.0
2	23.0	25.0	19.0	13.0	5.0	10.0	9.5	18.5	15.5	24.5	26.0	30.0
3	21.0	26.0	16.0	8.0	8.0	9.5	7.5	19.0	21.0	25.5	29.0	29.5
4	27.0	22.0	18.0	10.0	11.0	11.0	13.0	12.5	21.0	26.0	23.5	29.0
5	27.0	23.0	16.0	8.0	7.0	9.5	14.5	15.0	21.5	26.5	27.5	28.5
6	28.0	21.0	18.0	11.0	11.0	7.0	14.5	17.0	24.5	26.5	26.5	28.0
7	25.0	20.0	15.0	12.0	12.0	9.0	11.5	19.0	23.5	27.0	24.5	28.5
8	26.0	22.0	19.0	9.0	8.0	10.0	16.0	20.0	20.0	26.0	29.0	28.0
9	27.0	21.0	19.0	7.0	6.0	11.5	17.0	22.0	21.0	24.5	30.0	29.0
10	28.0	21.0	14.0	10.0	6.0	11.5	18.5	23.5	21.0	26.0	29.5	29.5
11	29.0	20.0	14.0	11.0	10.0	7.0	15.0	23.0	17.0	28.0	30.0	29.5
12	29.5	17.0	13.0	8.0	11.0	8.0	13.0	20.5	21.5	24.5	28.0	26.5
13	21.0	21.0	17.0	13.0	10.0	9.0	16.0	16.0	18.5	22.5	28.0	25.5
14	24.0	21.0	15.0	14.0	10.0	11.0	19.0	18.0	25.0	25.0	29.0	28.0
15	23.0	22.0	14.0	9.0	5.0	9.0	17.0	14.0	22.0	22.0	25.5	25.0
16	24.0	21.0	7.0	11.0	8.0	12.5	11.5	14.0	22.5	22.0	27.0	27.0
17	26.0	22.0	8.0	9.0	9.0	11.0	9.0	18.0	22.0	25.0	27.0	26.5
18	27.0	22.0	8.0	7.0	10.0	6.5	10.5	17.0	25.0	25.0	29.0	28.0
19	26.0	21.0	11.0	0.4	11.0	8.0	13.5	21.5	24.0	26.0	28.0	28.5
20	27.0	17.5	14.0	7.0	6.0	10.0	16.0	23.0	23.0	24.5	28.5	29.5
21	26.0	18.0	15.0	10.0	4.0	12.0	18.5	22.0	23.5	27.0	28.0	30.0
22	23.0	14.0	14.0	9.0	6.5	15.0	20.0	18.5	22.5	29.0	24.0	28.5
23	22.0	16.0	13.0	6.0	11.0	13.0	20.5	20.0	16.5	24.0	29.0	28.0
24	26.0	18.0	12.0	3.0	11.0	12.0	16.0	17.0	20.5	27.5	27.5	26.0
25	26.0	16.0	13.0	4.0	9.0	16.5	18.0	21.0	22.5	28.0	26.0	27.5
26	24.5	13.0	10.0	6.0	12.0	15.0	8.0	23.0	22.0	28.0	27.0	27.5
27	23.0	16.0	10.0	8.0	10.0	15.0	18.5	23.0	19.5	29.0	27.0	26.5
28	27.0	11.0	9.0	10.0	7.0	12.5	12.0	24.0	20.5	24.5	27.5	27.5
29	26.0	13.0	13.0	10.0	11.0		13.0	19.0	22.5	24.0	28.5	25.5
30	28.0	14.0	10.0	7.0	8.0		6.5	20.5	24.0	27.5	29.0	27.5
31		16.0		7.0	10.0		7.0		25.5		29.0	30.0

Station climatologique de Hled RETSMAIA

TEMPERATURES DE L'EAU DU SAC COLORADO A 19 H. (Année 1982-1983)

JOUR	SEPT	OCTO	NOVE	DECE	JANV	FEVR	MARS	AVRI	MAI	JUIN	JUIL	AOUT
1	22.0	23.0	15.0	8.0	5.0	11.0	10.0	12.5	19.0	25.5	26.0	27.5
2	21.0	23.0	16.0	9.0	6.0	9.0	7.0	15.0	16.0	23.0	24.5	27.5
3	22.0	22.0	15.0	8.0	6.0	8.0	8.5	15.0	20.0	19.5	25.5	26.5
4	23.0	20.0	16.0	8.0	8.0	8.0	10.0	11.5	20.0	25.0	25.0	28.0
5	26.0	21.0	15.0	8.0	6.0	8.0	9.5	13.0	20.5	21.5	26.0	27.5
6	24.0	20.0	14.0	8.0	9.0	2.5	10.0	16.0	22.5	25.0	26.0	27.5
7	23.0	19.0	15.0	8.0	8.0	8.0	10.0	15.0	21.5	25.5	25.0	27.0
8	23.0	19.0	15.0	8.0	7.0	8.0	12.0	17.0	20.0	25.5	27.5	27.0
9	23.0	19.0	15.0	6.0	6.0	9.5	13.5	19.0	19.5	24.0	28.0	28.5
10	25.0	19.0	14.0	9.0	6.0	9.0	14.5	19.0	20.5	25.5	26.0	28.0
11	23.0	18.0	14.0	8.0	8.0	5.0	13.0	19.5	17.0	24.5	28.0	28.0
12	20.0	16.5	13.0	7.0	7.0	7.5	12.0	16.5	21.0	24.0	27.0	26.0
13	20.0	18.0	14.0	9.0	6.0	8.0	13.5	15.0	10.5	24.0	26.5	24.5
14	21.0	18.0	14.0	10.0	7.0	7.0	14.0	14.0	21.5	19.0	26.0	23.5
15	21.0	18.0	12.0	8.0	6.0	8.5	13.0	13.5	21.5	21.5	26.0	24.5
16	22.0	19.0	6.0	8.0	7.0	9.0	11.0	13.0	22.0	21.0	24.5	25.5
17	24.0	19.0	8.0	8.0	10.0	9.0	8.5	15.0	23.0	22.5	26.0	26.0
18	24.0	19.0	8.0	6.0	9.0	6.0	10.0	15.0	23.5	24.0	28.5	27.0
19	24.0	19.0	10.0	0.3	9.0	6.0	12.5	18.5	23.0	23.5	27.0	28.0
20	24.0	18.0	11.0	6.0	4.0	7.0	15.0	19.5	22.5	21.5	27.0	27.5
21	24.0	17.0	11.0	7.0	3.0	9.0	14.5	18.0	22.5	24.0	27.5	28.0
22	23.0	14.0	11.0	7.0	6.0	10.0	17.0	18.0	18.5	25.5	28.5	26.5
23	21.0	15.5	11.0	5.0	7.0	9.5	17.0	17.0	18.0	22.5	28.0	26.0
24	23.0	15.0	11.0	3.0	7.0	9.5	15.5	16.0	20.0	23.5	27.0	25.0
25	23.0	14.0	9.0	3.0	7.0	12.5	12.5	19.0	21.0	25.0	26.5	26.0
26	23.0	12.0	10.5	6.0	7.0	8.5	11.0	19.5	21.0	25.5	26.0	26.5
27	22.0	13.0	8.0	7.0	6.5	13.0	11.0	20.0	19.0	22.0	26.5	25.0
28	23.0	11.0	9.0	7.0	6.5	11.0	10.5	20.5	19.5	25.0	27.0	25.5
29	24.0	13.0	9.0	7.0	8.0		10.5	18.0	22.0	23.0	27.5	25.0
30	24.0	13.0	9.0	6.0	9.0		7.0	20.0	21.5	24.0	27.5	26.0
31		15.0		6.0	8.0		6.5		23.0		26.5	27.0

Station climatologique de Hled RETSMAIA

OBSERVATIONS PLUVIOMETRIQUES 1982-1983

MOIS	P ₀	P ₅	P ₁₀	P ₁₅	P ₂₀
SEPT	32.0	27.3	27.5	26.7	26.6
OCTO	52.1	46.0	47.3	46.3	46.5
NOVE	54.2	48.9	46.9	46.1	48.2
DECE	25.9	22.3	22.4	21.0	22.2
JANV	1.9	1.2	1.6	1.2	1.4
FEVR	8.8	7.2	8.3	7.4	7.2
MARS	13.4	9.6	11.6	9.1	12.0
AVRI	0.0	0.0	0.0	0.0	0.0
MAI	60.8	47.1	50.1	46.8	49.7
JUIN	56.1	32.0	-	27.2	33.5
JUIL	0.0	0.0	0.0	0.0	0.0
ACUT	4.9	3.7	4.6	4.0	4.0
ANNEE	310.1	245.3	220.3	235.8	251.3

P₀ Pluviomètre au sol
P₅ Pluviomètre à 0.50m du sol
P₁₀ Pluviomètre à 1.00m du sol
P₁₅ Pluviomètre à 1.50m du sol
P₂₀ Pluviomètre à 2.00m du sol

BASSIN VERSANT DE L'OUED EL HISSIANE

JEBEL SEMMAMA (TUNISIE CENTRALE)

POSTES PLUVIOMETRIQUES

Numéro	Latitude N	Longitude E	Altitude
P 1	35 19 24	6 34 44	997
P 2	35 19 33	6 35 06	953
P 3	35 19 50	6 35 00	1003
P 4	35 19 50	6 34 39	1065
P 5	35 19 42	6 34 21	1065
P 6	35 19 51	6 34 04	1120
P 7	35 00 00	6 33 51	1112
P 8	35 19 59	6 33 27	1200
P 9	35 20 15	6 33 14	1248
P 10	35 20 10	6 33 35	1193
P 11	35 20 25	6 33 32	1225
P 12	35 20 10	6 33 59	1159
P 13	35 19 59	6 34 16	1091
P 14	35 20 10	6 34 44	1062
P 15	35 20 14	6 34 24	1102
P 16	35 20 21	6 34 04	1167
P 17	35 20 29	6 33 53	1204
P 18	35 20 44	6 34 03	1223
P 19	35 20 35	6 34 19	1165
P 20	35 20 29	6 34 38	1092
P 21	35 20 46	6 34 29	1155
P 22	35 21 03	6 34 59	1141
P 23	35 20 59	6 35 37	1042
P 24	35 20 37	6 36 07	932
P 25	35 20 20	6 35 22	1000
P 26	35 20 09	6 36 42	865
P 27	35 19 50	6 35 58	866
P 28	35 19 24	6 36 24	816
P 29	35 19 09	6 35 45	872
P 30	35 18 49	6 36 21	780
P 32	35 20 54	6 35 34	1039
P 33	35 20 57	6 35 29	1060
P 34	35 21 03	6 35 51	1015
P 35	35 21 09	6 35 42	1061
PG 81	35 20 13	6 36 02	894
PG 86	35 21 06	6 35 46	1038
PG 80	35 18 52	6 36 24	774
P 37	35 20 13	6 36 30	870
P 38	35 20 35	6 36 24	925
P 39	35 19 51	6 36 28	870
P 40	35 19 33	6 35 42	875
P 49	35 18 52	6 36 24	774

BASSIN VERSANT DE L'OUED EL HISSIANE

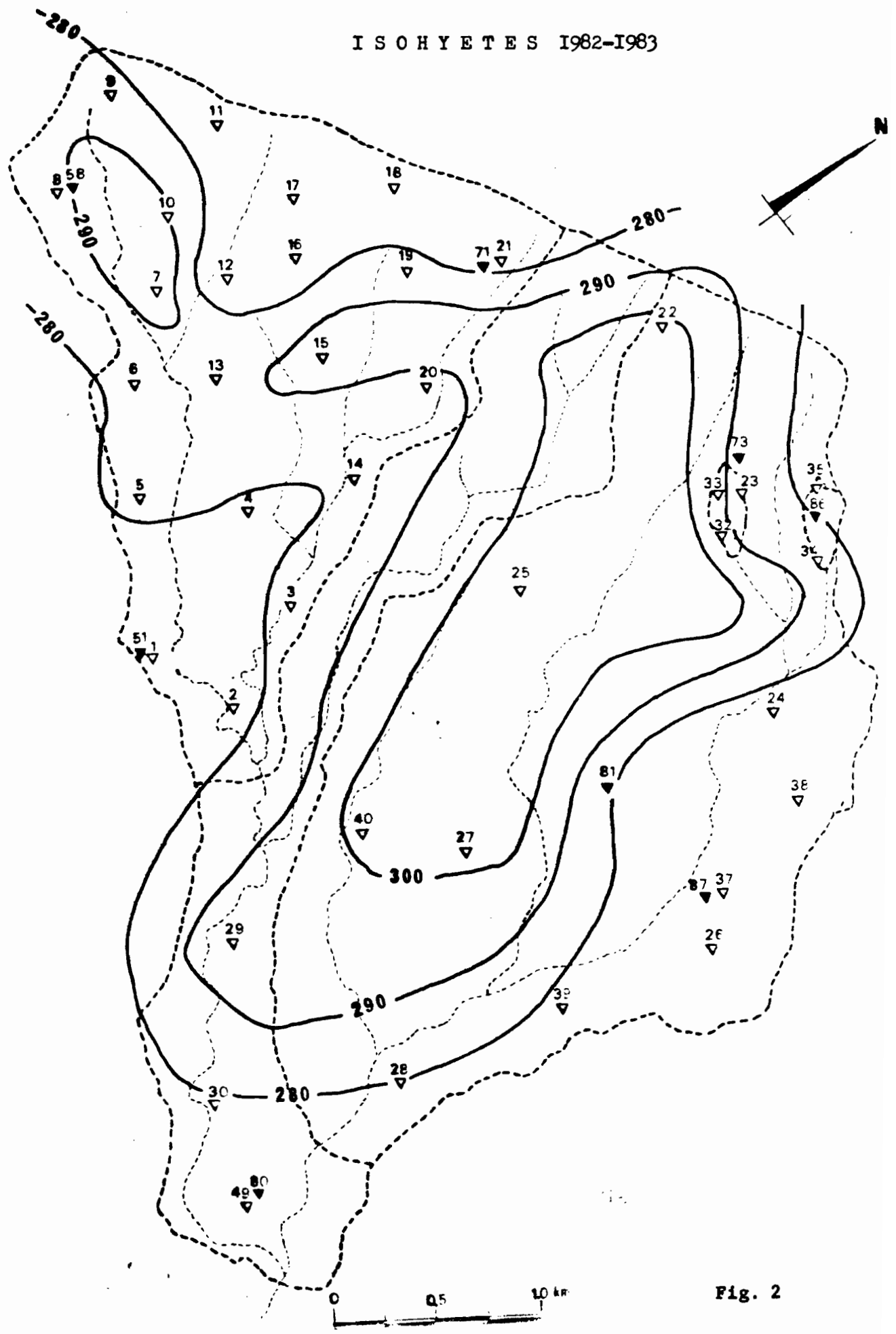


Fig. 2

PLUVIOMETRE 1

BASSIN VERSANT DE L'OUED EL KISSLAWE
JEMEL SHEPPARA (TUNISIE CENTRALE)

1982-1983

JOUR	SEPT	OCTO	NOVE	DECE	JANV	FEBV	MARS	AVRI	MAI	JUIN	JUIL	AOUT
1	.	9.5	0.3
2
3	.	.	5.4	0.2	.	.	0.6
4
5	.	.	.	4.2
6
7	0.8	0.7
8
9	.	.	.	20.0	.	0.2
10	.	.	35.0
11	.	.	6.6	1.8	22.2	0.5	.	.
12	2.5	.	1.1
13	5.4
14	0.8	3.4	0.2	.
15	.	.	5.0
16	.	.	0.8
17	4.4
18	.	.	1.0	.	.	5.1	1.6
19	.	.	0.8	2.0
20	.	6.5	40.5	.	.	.
21	3.5	4.2	1.5	.	30.3	.	.	.
22	0.4	0.8	0.2	0.4
23
24	.	.	.	0.7	.	.	0.7
25
26	.	0.3	.	9.5
27	.	.	11.0	.	.	0.9
28	.	16.4
29	.	34.3
30	.	6.1	2.0	.	.	.	4.7
31
Tot.	12.6	38.1	68.2	27.0	0.0	9.6	13.9	0.0	52.7	41.0	0.2	3.7

HAUTEUR ANNUELLE : 287.0 mm

PLUVIOMETRE 2

BASSIN VERSANT DE L'OUED EL KISSLAWE
JEMEL SHEPPARA (TUNISIE CENTRALE)

1982-1983

JOUR	SEPT	OCTO	NOVE	DECE	JANV	FEBV	MARS	AVRI	MAI	JUIN	JUIL	AOUT
1	.	10.5	0.8
2
3	.	.	4.8	0.2	.	.	0.6
4
5	.	.	.	2.1
6
7
8	0.7	.	.	.	0.7
9	.	.	.	8.2	2.0
10	.	.	27.6	.	.	0.2
11	.	.	7.2	1.5	19.8	1.2	.	.
12	6.6	.	0.3
13	3.0
14	0.8	3.0	0.2	.
15	.	.	4.5
16	.	.	0.8
17	4.5
18	.	.	2.1	0.5	.	4.7	1.8
19	.	.	2.7	2.0
20	.	5.7	31.9	.	.
21	4.5	5.8	1.5
22	.	0.8	24.6	.	.	.
23	3.0	.	.	0.3	.	.	.	0.2	.	.	.	0.7
24
25	.	.	.	0.8	.	.	.	0.7
26	.	0.7	0.6	1.1
27	.	.	10.6	.	.	1.9
28	.	34.3
29	.	11.7
30	.	6.2	1.6	5.7
31
Tot.	17.9	57.7	60.9	27.2	2.0	9.8	15.1	0.0	44.6	33.1	0.2	4.0

HAUTEUR ANNUELLE : 272.5 mm

PLUVIOMETRE 3

BASSIN VERSANT DE L'OUED EL KISSLAWE
JEMEL SHEPPARA (TUNISIE CENTRALE)

1982-1983

JOUR	SEPT	OCTO	NOVE	DECE	JANV	FEBV	MARS	AVRI	MAI	JUIN	JUIL	AOUT
1	.	10.7	0.3
2
3	.	.	5.5	0.2	.	.	0.7
4
5	.	.	.	4.3
6
7	0.9	0.7
8	0.2
9	.	.	.	8.7	.	0.2
10	.	.	29.2
11	.	.	5.3	1.5	20.1	1.3	.	.
12	0.1	.	3.2
13	2.3
14	0.8	0.9	0.2	.
15	.	.	7.2
16	.	.	0.8
17	3.0
18	.	.	2.4	.	.	4.5	2.2
19	.	.	2.2	2.7
20	.	6.5	6.5	37.1	.	.
21	4.0	5.0
22	.	0.8	1.2	.	30.1	.	.	.
23	2.5	0.2	0.5
24
25	.	.	.	1.0	.	.	0.6
26	.	0.6	.	9.2
27	.	10.8	.	.	.	1.0
28	.	34.3
29	.	11.0
30	.	9.5	1.5	.	.	.	4.3
31
Tot.	17.7	38.6	66.2	26.9	0.2	6.6	12.4	0.0	50.4	38.4	0.2	4.6

HAUTEUR ANNUELLE : 282.2 mm

PLUVIOMETRE 4

BASSIN VERSANT DE L'OUED EL KISSLAWE
JEMEL SHEPPARA (TUNISIE CENTRALE)

1982-1983

JOUR	SEPT	OCTO	NOVE	DECE	JANV	FEBV	MARS	AVRI	MAI	JUIN	JUIL	AOUT
1	.	10.7	0.9
2
3	.	.	4.8	0.2	.	.	0.7
4
5	.	.	.	5.6
6
7	1.2	.	.	.	0.7
8	2.5
9	.	.	.	7.9
10	.	.	28.0	.	.	0.2
11	.	.	9.0	1.6	19.2	1.7	.	.
12	2.7	.	0.2
13	2.1
14	0.7	3.1	0.2	.
15	.	.	4.0
16	.	.	0.8
17	4.4
18	.	.	2.3	0.5	.	4.0	1.7
19	.	.	2.1	2.3
20	.	6.8	32.5	.	.
21	1.9	4.7
22	.	0.8	0.7	32.9	.	.	.
23	1.9	.	.	0.3	.	.	.	0.2	.	.	.	0.5
24
25	.	.	.	0.8	.	.	.	0.6
26	.	0.9	0.6	9.7
27	.	11.3	.	.	.	1.8
28	.	15.7
29	.	11.0
30	.	3.7	1.7	7.1
31
Tot.	9.3	55.3	63.6	28.5	2.5	9.1	15.9	0.0	52.3	34.2	0.2	4.2

HAUTEUR ANNUELLE : 275.1 mm

PLUVIOMETRE 5 BASSIN VERSANT DE L'OUED EL HISSLAWE
JEBEL SDOYAMA (TUNISIE CENTRALE)

1982-1983

JOUR	SEPT	OCTO	NOVE	DECE	JANV	FEVR	MARS	AVRI	MAI	JUIN	JUIL	AOUT
I	.	8.5	0.6
2	0.2	.	.	0.8
3	.	.	5.7
4	.	.	.	5.2
5
6	0.9	0.8
7	0.1
8
9	.	.	.	10.1
10	.	.	37.7	.	0.2
11	.	.	6.1	1.3	21.6	0.6	.	.
12	0.9	.	1.8
13	2.5	0.3	.
14	0.7	.	.	.	2.7
15	.	.	5.1
16	.	.	0.8
17	3.5
18	.	.	1.2	.	.	4.6	2.3	5.4
19	.	.	.	1.2	39.9	.	.
20	.	8.2	.	.	0.2
21	3.2	3.7	0.8	.	27.0	.	.	.
22	.	0.8	0.2	0.5
23	0.3
24
25	.	.	.	0.6	.	0.7
26	.	0.3	.	8.5
27	.	.	9.7	.	.	1.0
28	.	17.0
29	.	17.0
30	.	5.5	1.8	.	.	.	7.1
31
Tot.	8.0	61.0	70.5	26.9	0.3	8.5	15.5	0.0	48.8	40.5	0.3	7.5

HAUTEUR ANNUELLE : 287.8 mm

PLUVIOMETRE 6 BASSIN VERSANT DE L'OUED EL HISSLAWE
JEBEL SDOYAMA (TUNISIE CENTRALE)

1982-1983

JOUR	SEPT	OCTO	NOVE	DECE	JANV	FEVR	MARS	AVRI	MAI	JUIN	JUIL	AOUT
I	.	7.4	1.5
2
3	.	.	5.9	0.2	.	1.0
4
5	.	.	.	5.5
6
7
8	0.2	.	.	1.0	.	.	.	1.0
9
10	.	.	37.2	.	10.7
11	.	.	6.0	1.2
12	0.2	.	1.6	19.8	0.8	.	.
13	2.6
14	0.7	2.7	.	.	.	0.5	.
15	.	.	5.2
16	.	.	0.8
17	3.1
18	.	.	1.3	.	.	4.7	2.7
19	.	.	.	1.3	5.5
20	.	8.6	.	.	0.2	35.6	.	.
21	3.3	3.6
22	.	0.8	0.5	.	25.9	.	.	.
23	0.2	0.2	0.5
24
25	.	.	.	0.5	.	.	0.8
26	.	0.4	.	7.9
27	.	.	9.3	.	.	1.0
28	.	16.0
29	.	17.3
30	.	3.8	1.9	.	.	.	7.3
31
Tot.	7.0	57.9	70.7	27.1	0.4	8.7	15.6	0.0	45.9	40.4	0.5	8.0

HAUTEUR ANNUELLE : 282.2 mm

PLUVIOMETRE 7 BASSIN VERSANT DE L'OUED EL HISSLAWE
JEBEL SDOYAMA (TUNISIE CENTRALE)

1982-1983

JOUR	SEPT	OCTO	NOVE	DECE	JANV	FEVR	MARS	AVRI	MAI	JUIN	JUIL	AOUT
I	.	4.3	8.8
2	0.2	.	.	1.5
3	.	.	6.3
4
5	.	.	.	6.5
6
7	1.6	1.5
8	2.1
9	.	.	.	5.5	.	0.5
10	.	.	31.7
11	.	.	8.9	1.5	23.4	2.1	.	.
12	3.1	.	0.3
13	3.7
14	0.4	2.3	0.7	.
15	.	.	4.6
16	.	.	0.8
17	5.2
18	.	.	2.8	0.5	.	4.3	1.2
19	.	.	.	2.0	4.5
20	.	9.3	.	.	1.7	39.9	.	.
21	0.7	2.2	32.6	.	.	.
22	.	1.2	0.3
23	1.4	.	.	0.6	.	.	0.5	0.5
24
25	.	.	.	1.0	.	.	1.5
26	.	0.9	0.8	10.2
27	.	.	13.6	.	.	2.1
28	.	13.9
29	.	13.5
30	.	3.0	2.5	.	.	.	7.9
31
Tot.	9.3	50.3	73.1	27.8	3.8	9.2	18.2	0.0	56.7	42.0	0.7	8.0

HAUTEUR ANNUELLE : 299.1 mm

PLUVIOMETRE 8 BASSIN VERSANT DE L'OUED EL HISSLAWE
JEBEL SDOYAMA (TUNISIE CENTRALE)

1982-1983

JOUR	SEPT	OCTO	NOVE	DECE	JANV	FEVR	MARS	AVRI	MAI	JUIN	JUIL	AOUT
I	.	5.1	1.1
2
3	.	.	6.8	0.2	.	1.6
4
5	.	.	.	6.8
6
7	1.0	1.6
8	0.2
9
10	.	.	37.5	.	8.3	.	0.3
11	.	.	6.4	0.9
12	0.3	.	2.1	17.5	0.7	.	.
13	2.4
14	0.4	3.0	.	.	.	0.7	.
15	.	.	8.1
16	.	.	0.8
17	2.1
18	.	.	2.0	.	.	4.4	3.1
19	.	.	.	1.8	10.3
20	.	11.4	.	.	0.4	45.6	.	.
21	3.4	1.8
22	.	1.0	0.8	.	25.2	.	.	.
23	0.4	0.4	0.4
24
25	.	.	.	0.5	.	.	1.6
26	.	0.5	.	10.1
27	.	.	8.7	.	.	1.1
28	.	19.4
29	.	14.3
30	.	2.5	1.9	.	.	.	0.8
31
Tot.	6.9	56.0	75.4	28.4	0.6	8.8	9.8	0.0	42.9	46.3	0.7	13.9

HAUTEUR ANNUELLE : 289.7 mm

PLUVIOMETRE 9 BASSIN VERSANT DE L'OUED EL KISSIAWE
JEBEL SEPPAMA (TUNISIE CENTRALE)

1962-1963												
JOUR	SEPT	OCTO	NOVE	DECE	JANV	FEBR	MARS	AVRI	MAI	JUN	JUIL	AOÛT
1	.	5.0	1.0
2
3	.	.	8.2	0.2	.	.	1.6
4
5	.	.	.	7.0
6	1.2	1.6
7	0.2
8
9	.	.	39.8	0.1	.	0.3
10
11	.	.	6.8	1.0	.	.	.	21.2	1.0	.	.	.
12	1.1	.	2.2
13	1.5
14	0.4	2.0	0.7	.
15	.	.	6.3
16	.	.	0.8
17	2.8
18	.	.	2.3	.	.	4.3	2.6
19	.	.	.	1.1	7.9	.
20	.	10.4	.	.	0.8	42.9	.	.
21	3.1	3.3
22	.	1.0	18.7	.	.	.
23	0.5	0.4	.	.	.	0.3	.
24
25	.	.	.	0.5	.	.	1.6
26	.	0.6	.	9.9
27	.	.	9.0	.	.	1.0
28	.	19.1
29	.	14.2
30	.	3.0	2.3	.	.	.	6.0
31
Tot.	6.6	56.6	78.7	27.6	1.0	7.6	14.6	0.0	40.1	43.9	0.7	11.4

HAUTEUR ANNUELLE : 286.8 mm

PLUVIOMETRE 10 BASSIN VERSANT DE L'OUED EL KISSIAWE
JEBEL SEPPAMA (TUNISIE CENTRALE)

1962-1963												
JOUR	SEPT	OCTO	NOVE	DECE	JANV	FEBR	MARS	AVRI	MAI	JUN	JUIL	AOÛT
1	.	3.6	1.6
2
3	.	.	6.3	0.2	.	1.7
4
5	.	.	.	6.7
6
7	1.6
8	3.2	.	1.7	.	.
9	.	.	32.9	6.7	.	0.6
10
11	.	.	9.1	1.6	23.5	2.7	.
12	3.7	.	0.3
13	3.5
14	0.5	2.3	0.8	.
15	.	.	4.9
16	.	.	0.8
17	5.3
18	.	.	2.8	0.5	4.3	1.9
19	.	.	.	2.2	4.2
20	.	9.5	.	.	1.8	29.5	.	.
21	0.5	2.1
22	.	1.0	0.2	.	.	33.5	.	.
23	0.5	.	.	0.7	.	.	0.4	0.5
24
25	.	.	.	1.2	.	.	1.7
26	.	1.1	0.8	10.5
27	.	.	13.8	.	.	1.7
28	.	16.7
29	.	12.9
30	.	2.7	2.4	.	.	.	8.7
31
Tot.	8.7	49.6	75.7	30.1	5.0	8.9	19.9	0.0	57.2	32.2	0.8	8.0

HAUTEUR ANNUELLE : 296.1 mm

PLUVIOMETRE 11 BASSIN VERSANT DE L'OUED EL KISSIAWE
JEBEL SEPPAMA (TUNISIE CENTRALE)

1962-1963												
JOUR	SEPT	OCTO	NOVE	DECE	JANV	FEBR	MARS	AVRI	MAI	JUN	JUIL	AOÛT
1	.	5.3	1.6
2
3	.	.	8.4	0.2	.	.	1.7
4
5	.	.	.	5.7
6
7	1.2	1.6
8	0.3
9	.	.	8.2
10	.	.	35.0	.	.	0.2
11	.	.	6.7	1.1	.	.	.	19.0	1.0	.	.	.
12	3.0	.	2.1
13	1.1
14	0.5	1.9	0.8	.
15	.	.	5.1
16	.	.	0.8
17	2.9
18	.	.	2.3	.	.	4.2	2.7
19	.	.	.	1.5	6.2	.
20	.	10.0	.	.	0.7	42.7	.	.
21	2.9	3.0
22	.	1.0	18.7	.	.	.
23	0.3	0.4	.	.	.	0.4	.
24
25	.	.	.	0.6	.	.	1.7
26	.	1.0	.	9.7
27	.	.	8.9	.	.	1.2
28	.	16.7
29	.	14.0
30	.	2.8	2.0	.	.	.	6.1
31
Tot.	7.8	53.8	72.9	26.8	1.0	7.5	15.0	0.0	37.9	43.7	0.8	9.9

HAUTEUR ANNUELLE : 277.1 mm

PLUVIOMETRE 12 BASSIN VERSANT DE L'OUED EL KISSIAWE
JEBEL SEPPAMA (TUNISIE CENTRALE)

1962-1963												
JOUR	SEPT	OCTO	NOVE	DECE	JANV	FEBR	MARS	AVRI	MAI	JUN	JUIL	AOÛT
1	.	2.9	1.7
2
3	.	.	5.7	0.2	.	1.0
4
5	.	.	.	6.1
6
7	0.7
8	2.5	.	1.3	.	.	.
9	.	.	7.6
10	.	.	24.8	.	.	0.4
11	.	.	8.9	1.6	22.8	2.7	.
12	2.9	.	0.2
13	3.7
14	0.5	2.0	0.4	.
15	.	.	4.2
16	.	.	0.8
17	4.7
18	.	.	2.4	0.5	4.0	1.0
19	.	.	.	2.2
20	.	10.6	.	.	1.4	28.6	.	.
21	0.6	2.0
22	.	0.9	33.6	.	.
23	0.3	.	.	0.3	.	.	0.2	0.7
24
25	.	.	.	0.8	.	.	0.7
26	.	0.6	0.5	8.0
27	.	.	8.0	.	.	1.5
28	.	16.6
29	.	15.0
30	.	2.9	2.1	.	.	.	8.0
31
Tot.	8.0	51.5	59.3	27.1	3.9	7.9	15.9	0.0	56.6	31.3	0.4	5.4

HAUTEUR ANNUELLE : 267.3 mm

PLUVIOMETRE 12

BASSIN VERSANT DE L'OUED EL HISSIANE
JEMEL SIDDAMA (TUNISIE CENTRALE)

1982-1983												
JOUR	SEPT	OCTO	NOVE	DECE	JANV	FEVR	MARS	AVRI	MAI	JUIN	JUIL	AOUT
1	.	5.5	0.8
2	.	.	3.0	0.2	.	.	1.0
3
4	.	.	.	5.5
5
6	1.4	1.0
7
8	.	.	.	2.1
9	.	.	29.9	6.2	0.3
10
11	.	.	8.3	1.4	.	.	.	22.7	2.2	.	.	.
12	2.1	.	0.2
13	3.9	0.3	.	.
14	0.3	2.0
15	.	.	4.2
16	.	.	0.8
17	4.8
18	.	.	2.7	0.5	4.5	1.6
19	.	.	2.0	2.7
20	.	8.0	.	.	1.1	.	.	.	44.7	.	.	.
21	1.2	3.5	.	.	.	0.1	.	31.7
22	.	1.0	.	.	.	0.2	0.6
23	1.8	.	.	0.2
24	.	.	.	0.8
25	.	.	.	0.8	.	0.7
26	.	0.8	0.6	9.9
27	.	.	12.9	.	.	1.8
28	.	15.4
29	.	13.2
30	.	3.5	1.5	.	.	7.2
31
Tot.	9.3	50.9	66.9	26.5	3.2	8.6	16.0	0.0	54.6	46.9	0.3	5.3

HAUTEUR ANNUELLE : 288.5 mm

PLUVIOMETRE 14

BASSIN VERSANT DE L'OUED EL HISSIANE
JEMEL SIDDAMA (TUNISIE CENTRALE)

1982-1983												
JOUR	SEPT	OCTO	NOVE	DECE	JANV	FEVR	MARS	AVRI	MAI	JUIN	JUIL	AOUT
1	.	9.6	0.4
2	.	.	6.0	0.2	.	.	1.0
3
4	.	.	.	5.5
5
6	1.0
7
8	0.3	.	1.2	.	1.1
9	.	.	26.0	8.6	.	0.2
10
11	.	.	6.1	1.5	20.0	1.5	.	.
12	7.1	.	3.2
13	3.2
14	0.7	1.2	.	.	.	0.3	.
15	.	.	7.0
16	.	.	0.8
17	3.0	.	.	.
18	.	.	2.5	.	.	4.5	2.3
19	.	.	2.3	3.1
20	.	6.6	.	.	0.7	38.2	.	.
21	2.5	4.0
22	.	1.1	0.5	.	29.6	.	.	.
23	2.6	0.2	0.4
24
25	.	.	.	1.2	.	0.7
26	.	0.9	.	9.2
27	.	.	10.8	.	.	1.1
28	.	14.9
29	.	11.6
30	.	9.2	1.6	.	.	.	4.7
31
Tot.	16.1	57.9	64.4	28.3	1.0	7.2	12.6	0.0	49.8	39.7	0.3	5.6

HAUTEUR ANNUELLE : 282.9 mm

PLUVIOMETRE 15

BASSIN VERSANT DE L'OUED EL HISSIANE
JEMEL SIDDAMA (TUNISIE CENTRALE)

1982-1983												
JOUR	SEPT	OCTO	NOVE	DECE	JANV	FEVR	MARS	AVRI	MAI	JUIN	JUIL	AOUT
1	.	10.3	1.0
2	.	.	4.7	0.2	.	.	1.1
3	.	.	.	4.5
4
5
6	1.5	1.2
7	2.5
8	.	.	.	6.0	.	0.4
9	.	.	28.0
10
11	.	.	9.2	1.5	.	.	.	19.7	2.1	.	.	.
12	2.9	.	0.2
13	9.9
14	0.3	2.5	.	.	.	0.3	.	.
15	.	.	4.1
16	.	.	0.8
17	5.0
18	.	.	2.5	.	.	4.5	1.9
19	.	.	0.5	2.0	1.3	34.7	.	4.0
20	.	6.7
21	1.0	2.3
22	.	1.2	.	.	.	0.5	.	31.6
23	1.8	.	.	0.5	.	0.3	0.5
24
25	.	.	.	0.9	.	.	0.6
26	.	0.9	0.6	9.9
27	.	.	12.7	.	.	1.7
28	.	16.5
29	.	15.8
30	.	4.0	1.7	.	.	.	8.2
31
Tot.	15.9	57.7	65.5	25.8	3.8	9.1	18.0	0.0	53.5	36.8	0.3	6.8

HAUTEUR ANNUELLE : 293.2 mm

PLUVIOMETRE 16

BASSIN VERSANT DE L'OUED EL HISSIANE
JEMEL SIDDAMA (TUNISIE CENTRALE)

1982-1983												
JOUR	SEPT	OCTO	NOVE	DECE	JANV	FEVR	MARS	AVRI	MAI	JUIN	JUIL	AOUT
1	.	3.7	1.5
2	.	.	3.2	0.2	.	4	1.2
3
4	.	.	.	6.2
5
6
7	1.6	0.6
8	2.7
9	.	.	25.6	7.9	.	0.3
10
11	.	.	8.7	1.0	23.9	2.0	.	.
12	3.8	.	0.1
13	2.8
14	0.2	2.2	0.4	.
15	.	.	4.0
16	.	.	0.8
17	4.9
18	.	.	2.5	0.5	3.7	1.1
19	.	.	2.1	3.6
20	.	20.7	.	.	1.5	28.5	.	.
21	0.8	1.9
22	.	1.1	37.2	.	.	.
23	0.7	.	0.3	.	.	0.2	0.6
24
25	.	.	.	0.7	.	0.9
26	.	0.5	0.5	8.2
27	.	.	9.5	.	1.7
28	.	17.1
29	.	15.9
30	.	3.3	2.0	.	.	.	8.1
31
Tot.	8.3	54.2	60.4	26.9	4.2	7.9	26.8	0.0	61.3	30.5	0.4	6.0

HAUTEUR ANNUELLE : 276.9 mm

PLUVIOMETRE 17 BASSIN VERSANT DE L'OUED EL HISSLANE
JEBEL SEPPANA (TUNISIE CENTRALE)

1982-1983

JOUR	SEPT	OCTO	NOV	DECE	JANV	FEVR	MARS	AVRI	MAI	JUIN	JUIL	AOUT
1	.	3.2	1.0
2
3	.	.	6.1	0.2	.	.	1.6
4
5	.	.	.	6.8
6
7	1.7	1.7
8	2.7
9	.	.	.	8.0
10	.	.	25.7	.	0.4
11	.	.	8.7	1.0	.	.	.	23.7	2.1	.	.	.
12	3.2	.	0.1
13	1.4
14	0.3	.	.	.	2.0	0.4	.	.
15	.	.	4.0
16	.	.	0.8
17	4.8
18	.	.	2.7	0.5	3.6	1.2
19	.	.	2.3	3.5
20	.	10.7	.	.	1.6	28.6	.	.
21	0.7	1.7
22	.	1.0	37.7
23	0.5	.	.	0.3	.	0.4	0.8	.
24
25	.	.	.	0.9	.	0.9
26	.	0.4	0.4	8.2
27	.	.	9.3	.	.	1.7
28	.	17.8
29	.	15.7
30	.	2.9	2.1	.	.	8.0
31
Tot.	6.1	53.4	60.9	28.0	4.3	7.7	17.0	0.0	61.6	30.7	0.4	7.6

HAUTEUR ANNUELLE : 277.7 mm

PLUVIOMETRE 18 BASSIN VERSANT DE L'OUED EL HISSLANE
JEBEL SEPPANA (TUNISIE CENTRALE)

1982-1983

JOUR	SEPT	OCTO	NOV	DECE	JANV	FEVR	MARS	AVRI	MAI	JUIN	JUIL	AOUT
1	.	5.0	0.7
2
3	.	.	6.3	0.2	.	.	1.7
4
5
6
7	1.5	1.7
8	0.3
9
10	.	.	24.0	.	0.2
11	.	.	6.8	21.3	1.3	.	.	.
12	4.2	.	2.1
13	1.3
14	0.4	.	.	.	1.3	0.4	.
15	.	.	5.0
16	.	.	0.8
17	2.7
18	.	.	2.5	.	4.2	2.4
19	4.9
20	.	7.2	.	.	0.5	38.3	.	.
21	2.8	3.3
22	.	1.1	20.3
23	0.2	0.5	0.5
24
25	1.0
26	.	0.5
27	1.4
28	.	16.8
29	.	18.0
30	.	3.0	.	.	.	5.6
31
Tot.	8.9	54.9	48.2	*	0.8	7.1	13.7	0.0	41.8	39.6	0.4	8.8

HAUTEUR ANNUELLE : (224.2)

* ABSENCE DE RELIEVES EN DECEMBRE.

PLUVIOMETRE 19 BASSIN VERSANT DE L'OUED EL HISSLANE
JEBEL SEPPANA (TUNISIE CENTRALE)

1982-1983

JOUR	SEPT	OCTO	NOV	DECE	JANV	FEVR	MARS	AVRI	MAI	JUIN	JUIL	AOUT
1	.	4.4	1.5
2
3	.	.	6.0	0.2	.	.	1.7
4
5	.	.	.	6.5
6
7	2.1
8	2.5
9	.	.	.	7.3
10	.	.	25.5	.	0.3
11	.	.	8.6	0.9	.	.	.	21.6	2.1	.	.	.
12	3.1	.	0.2
13	1.5
14	0.5	.	.	.	2.5	0.3	.	.
15	.	.	4.7
16	.	.	0.8
17	5.2
18	.	.	3.0	0.5	3.5	1.5
19	.	.	2.3	3.3
20	.	10.8	.	.	1.9	33.9	.	.
21	1.0	2.0
22	.	1.3	35.6
23	0.4	.	.	0.5	.	0.5	0.9
24
25	.	.	.	1.5	.	1.2
26	.	0.9	0.6	11.7
27	.	.	9.7	.	.	1.9
28	.	17.5
29	.	16.2
30	.	4.5	2.0	.	.	.	9.1
31
Tot.	6.5	57.6	62.6	31.2	4.4	8.2	19.6	0.0	57.4	36.0	0.3	7.5

HAUTEUR ANNUELLE : 291.3 mm

PLUVIOMETRE 20 BASSIN VERSANT DE L'OUED EL HISSLANE
JEBEL SEPPANA (TUNISIE CENTRALE)

1982-1983

JOUR	SEPT	OCTO	NOV	DECE	JANV	FEVR	MARS	AVRI	MAI	JUIN	JUIL	AOUT
1	.	5.2	1.1
2
3	.	.	5.6	0.2	.	.	1.6
4
5	.	.	.	5.3
6
7	0.3	.	1.2	1.4
8
9	.	.	.	7.3
10	.	.	25.2	.	0.3
11	.	.	6.0	1.6	.	.	.	21.2	1.4	.	.	.
12	2.2	.	2.9
13	1.7
14	0.4	1.0	0.4	.
15	.	.	6.1
16	.	.	0.8
17	2.9
18	.	.	2.2	.	4.5	2.2
19	.	.	.	2.3	5.2
20	.	11.2	.	.	0.7	43.2	.	.
21	1.1	3.3
22	.	1.3	29.7	.	.	.
23	0.7	0.5	0.4
24
25	.	.	.	0.9	.	1.3
26	.	0.8	9.6
27	.	.	10.7	.	1.3
28	.	18.0
29	.	16.9
30	.	4.0	2.0	.	.	5.1
31
Tot.	6.1	58.7	62.6	27.0	1.0	7.1	13.2	0.0	51.1	44.6	0.4	8.6

HAUTEUR ANNUELLE : 280.4 mm

PLUVIOMETRE 21 BASSIN VERSANT DE L'OUED EL HISSLANE
JEMEL SENOUMA (TUNISIE CENTRALE)

1982-1983

JOUR	SEPT	OCTO	NOVE	DECE	JANV	FEBR	MARS	AVRI	MAI	JUIN	JUIL	AOUT
1	.	5.0	0.5
2	0.2	.	.	1.5
3	.	.	6.1
4
5	.	.	.	5.1
6
7	1.4	1.2
8	0.2
9	.	.	.	6.4
10	.	.	23.2	.	0.3
11	.	.	6.0	1.5	.	.	.	22.2	1.2	.	.	.
12	6.0	.	2.5
13	1.0	0.4	.
14	0.4	.	.	.	1.2
15	.	.	5.0
16	.	.	0.8
17	2.6
18	.	.	2.4	.	3.9	2.4
19	.	.	.	2.4	5.5
20	.	6.5	.	.	0.6	.	.	.	45.3	.	.	.
21	2.4	5.2
22	.	1.4	24.5
23	0.5	0.5	0.3	.
24
25	.	.	.	0.9	.	1.3
26	.	0.5	.	9.7
27	.	.	20.6	.	.	1.5
28	.	16.0
29	.	17.3
30	.	5.4	1.8	.	.	.	5.5
31
Tot.	20.3	57.3	38.9	26.0	0.8	6.9	23.7	0.0	46.9	46.5	0.4	8.5

HAUTEUR ANNUELLE : 276.2 mm

PLUVIOMETRE 22 BASSIN VERSANT DE L'OUED EL HISSLANE
JEMEL SENOUMA (TUNISIE CENTRALE)

1982-1983

JOUR	SEPT	OCTO	NOVE	DECE	JANV	FEBR	MARS	AVRI	MAI	JUIN	JUIL	AOUT
1	.	11.3	1.0
2
3	.	.	5.5	3.2	.	1.4
4
5	.	.	.	5.2
6
7	1.0
8	1.7
9
10	.	.	25.2	.	0.4
11	.	.	8.5	1.3	23.2	2.5	.
12	2.1
13	4.2	0.4	.
14	0.4	2.1
15	.	.	4.9
16	.	.	0.8
17	5.1
18	.	.	3.2	0.5	3.0	2.1
19	.	.	.	2.5	2.8
20	.	11.5	.	.	1.7	38.4	.	.
21	2.0	2.3
22	.	1.5	37.3	.	.
23	.	.	.	0.5	.	.	0.4	0.9
24
25	.	.	.	1.3	.	1.4
26	.	1.2	0.5	9.7
27	.	.	8.3	.	2.0
28	.	15.2
29	.	16.9
30	.	10.7	1.8	.	.	.	8.9
31
Tot.	8.7	70.6	59.7	27.0	4.1	7.5	19.6	0.0	60.7	40.9	0.4	6.1

HAUTEUR ANNUELLE : 305.3 mm

PLUVIOMETRE 23 BASSIN VERSANT DE L'OUED EL HISSLANE
JEMEL SENOUMA (TUNISIE CENTRALE)

1982-1983

JOUR	SEPT	OCTO	NOVE	DECE	JANV	FEBR	MARS	AVRI	MAI	JUIN	JUIL	AOUT
1	.	5.1	1.3
2
3	.	.	4.8	0.1	.	.	0.3
4
5	.	.	.	4.2
6
7	1.5	0.2
8	2.6
9	.	.	20.8
10	.	.	.	5.8	1.3
11	.	.	8.0	1.7	.	.	.	21.9	0.1	.	.	.
12	1.3	.	0.7
13	1.3
14	0.4	.	.	.	4.5	0.3	.	.
15	.	.	6.0
16	.	.	1.4
17	2.7
18	.	.	1.3	0.6	4.5	2.2
19	.	.	.	1.6	4.3
20	.	7.0	.	.	0.3	.	.	.	44.0	.	.	.
21	0.6	6.3
22	.	0.4	0.1	.	36.0	.	.	.
23	0.7	0.4	0.6
24
25	.	.	.	0.6	.	.	0.2
26	.	0.6	1.8	9.5
27	.	.	6.9	.	.	2.2
28	.	16.4
29	.	19.4
30	.	5.6	1.6	.	.	.	7.0
31
Tot.	4.3	60.8	54.6	24.0	2.9	12.5	24.1	0.0	38.0	44.1	0.3	5.4

HAUTEUR ANNUELLE : 261.0 mm

PLUVIOMETRE 24 BASSIN VERSANT DE L'OUED EL HISSLANE
JEMEL SENOUMA (TUNISIE CENTRALE)

1982-1983

JOUR	SEPT	OCTO	NOVE	DECE	JANV	FEBR	MARS	AVRI	MAI	JUIN	JUIL	AOUT
1	.	8.5	0.2
2
3	.	.	4.2	0.3	.	.	0.1
4
5	.	.	.	4.3
6
7	1.2	0.2
8
9	8.6	0.6
10	.	.	22.5
11	.	.	7.0	1.3	19.0	0.2	.	.
12	3.0	.	1.2
13	4.0
14	0.4	0.1	.
15	.	.	6.3
16	.	.	1.2
17	2.7
18	.	.	0.3	0.4	5.3	1.5
19	.	.	.	0.5	3.7
20	.	.	7.7	.	0.1	43.4	.	.
21	1.3	10.4
22	.	0.2	0.1	.	31.8	.	.	.
23	0.5	0.2	0.4
24
25	.	.	.	0.5	.	.	0.3
26	.	0.4	1.3	11.0
27	.	.	8.6	.	1.7
28	.	12.8
29	.	13.7
30	.	4.4	1.8	.	.	.	5.2
31
Tot.	9.2	60.1	54.6	26.6	2.0	10.8	11.2	0.0	51.1	43.6	0.1	4.4

HAUTEUR ANNUELLE : 273.7 mm

PLUVIOMETRE 25 BASSIN VERSANT DE L'OUED EL HISSIAHE
JEBEL SEMMAMA (TUNISIE CENTRALE)

1982-1983												
JOUR	SEPT	OCTO	NOVE	DECE	JANV	FEVR	MARS	AVRI	MAI	JUIN	JUIL	AOUT
1	.	10.8	0.5
2
3	.	.	5.0	0.1	.	.	1.2
4
5	.	.	.	4.1
6
7	2.2	0.5
8	1.9
9	.	.	.	11.0	.	0.5
10	.	.	25.3
11	.	.	8.7	1.1	21.4	2.8	.	.
12	4.5
13	3.3
14	0.3	2.2	0.5	.
15	.	.	4.7
16	.	.	0.8
17	5.2
18	.	.	2.8	0.5	.	3.0	2.0
19	.	.	.	2.5	3.1
20	.	12.9	.	.	0.5	39.9	.	.
21	2.3	10.2
22	.	1.2	0.5	.	31.8	.	.	.
23	0.2	.	.	0.4	0.5
24
25	.	.	.	1.0	.	.	1.6
26	.	0.8	0.7	10.9
27	.	.	9.0	.	.	1.5
28	.	13.7
29	.	16.5
30	.	12.1	1.5	.	.	.	7.0
31
Tot.	10.6	78.2	59.0	31.5	2.4	7.2	19.0	0.0	53.3	42.7	0.5	5.3

HAUTEUR ANNUELLE : 309.7 mm

PLUVIOMETRE 26 BASSIN VERSANT DE L'OUED EL HISSIAHE
JEBEL SEMMAMA (TUNISIE CENTRALE)

1982-1983												
JOUR	SEPT	OCTO	NOVE	DECE	JANV	FEVR	MARS	AVRI	MAI	JUIN	JUIL	AOUT
1	.	11.5	0.4
2
3	.	.	4.0
4
5	.	.	.	3.0
6
7	1.7
8	1.6
9	.	.	.	9.5	.	0.4
10	.	22.3
11	.	.	7.5	1.4	20.2	0.2	.	.
12	5.4	.	0.2
13	5.0
14	0.3	3.3	.	.	0.2	.
15	.	.	4.0
16	.	.	0.7
17	3.6
18	.	.	0.3	1.1	.	5.0	1.3
19	.	.	.	0.2	2.7
20	.	10.5	40.7	.	.
21	2.9	7.0
22	.	0.1	1.8	.	30.4	.	.	.
23	0.6	0.3	0.2
24
25	.	.	.	0.7	.	.	1.4
26	.	0.2	1.0	14.0
27	.	.	8.0	.	.	1.3
28	.	13.5
29	.	13.8
30	.	3.9	2.0	.	.	.	4.7
31
Tot.	34.2	60.5	50.4	29.9	1.6	10.0	14.8	0.0	50.6	40.9	0.2	2.9

HAUTEUR ANNUELLE : 276.0 mm

PLUVIOMETRE 27 BASSIN VERSANT DE L'OUED EL HISSIAHE
JEBEL SEMMAMA (TUNISIE CENTRALE)

1982-1983												
JOUR	SEPT	OCTO	NOVE	DECE	JANV	FEVR	MARS	AVRI	MAI	JUIN	JUIL	AOUT
1	.	13.0	4.0
2
3	.	.	4.4	0.1	.	.	1.0
4
5	.	.	.	3.4
6
7	1.4	0.6
8	1.6
9	.	.	.	12.6	.	0.6
10	.	.	21.8
11	.	.	7.6	1.8	20.2	2.9	.	.
12	7.6
13	3.1
14	0.3	3.7	.	.	.	0.6	.	.
15	.	.	5.0
16	.	.	0.8
17	4.6
18	.	.	1.5	0.5	.	6.3	1.9
19	.	.	.	2.3
20	.	6.8	39.7	.	.
21	3.0	6.4
22	.	0.3	1.9	.	32.1	.	.	.
23	0.7	.	.	0.3	.	.	0.7	0.8
24
25	.	.	.	0.9	.	.	1.5
26	.	0.4	0.5	11.6
27	.	.	11.0	.	.	1.9
28	.	14.3
29	.	16.9
30	.	5.7	2.0	.	.	.	5.5
31
Tot.	34.7	63.8	38.6	33.4	1.6	12.5	17.5	0.0	52.4	42.6	0.6	4.7

HAUTEUR ANNUELLE : 302.4 mm

PLUVIOMETRE 28 BASSIN VERSANT DE L'OUED EL HISSIAHE
JEBEL SEMMAMA (TUNISIE CENTRALE)

1982-1983												
JOUR	SEPT	OCTO	NOVE	DECE	JANV	FEVR	MARS	AVRI	MAI	JUIN	JUIL	AOUT
1	.	9.5	4.5
2
3	.	.	4.7	0.2	.	0.1
4
5	.	.	.	3.3
6
7	0.2
8	1.6	.	1.2
9
10	.	.	23.7	.	.	0.5
11	.	.	6.4	1.6	19.5	.	.	.
12	7.5	.	1.9
13	3.2
14	0.3	3.3	0.2	.
15	.	.	1.4
16	.	.	0.8
17	3.8
18	.	.	0.4	0.6	.	5.2	1.4
19	.	.	.	0.7	4.4
20	.	7.0	.	.	0.2	37.6	.	.
21	4.8	6.9
22	.	0.4	1.0	.	35.2	.	.	.
23	0.6	0.4	0.8
24
25	.	.	.	0.4	.	.	1.4
26	.	0.3	1.1	11.9
27	.	.	7.3	.	.	0.8
28	.	12.3
29	.	15.5
30	.	8.9	1.5	.	.	.	4.8
31
Tot.	16.4	60.8	53.7	26.1	1.8	9.8	14.0	0.0	54.9	37.0	0.2	5.5

HAUTEUR ANNUELLE : 280.2 mm

PLUVIOMETRE 29 BASSIN VERSANT DE L'OUED EL HISSIANE
JEBEL SEPPAMA (TUNISIE CENTRALE)

1982-1983

JOUR	SEPT	OCTO	NOVE	DECE	JANV	FEVR	MARS	AVRI	MAI	JUIN	JUIL	AOUT
1	.	9.8	0.8
2
3	.	.	4.5	0.1	.	.	0.5
4
5	.	.	.	3.0
6
7	0.9	0.7
8	2.2
9	.	.	.	8.8	.	0.4
10	.	.	25.4
11	.	.	6.5	2.3	19.9	0.5	.	.
12	8.0	.	0.5
13	6.7
14	0.3	4.0	0.5	.
15	.	.	4.0
16	.	.	0.8
17	4.6
18	.	.	1.5	0.5	.	5.3	1.7
19	.	.	1.5	0.2
20	.	6.0	39.7	.	.
21	5.0	5.0	0.8	.	37.3	.	.	.
22	.	0.8
23	3.3	.	.	0.3	.	.	0.6	0.9
24
25	.	.	.	0.7	.	.	1.7
26	.	.	0.7	0.4	11.5
27	.	.	10.2	.	.	1.8
28	.	12.9
29	.	11.7
30	.	10.2	2.2	.	.	.	6.0
31
Tot.	23.3	57.1	56.8	28.6	2.2	11.5	16.3	0.0	57.3	40.2	0.5	4.3

HAUTEUR ANNUELLE : 298.1 mm

PLUVIOMETRE 30 BASSIN VERSANT DE L'OUED EL HISSIANE
JEBEL SEPPAMA (TUNISIE CENTRALE)

1982-83

JOUR	SEPT	OCTO	NOVE	DECE	JANV	FEVR	MARS	AVRI	MAI	JUIN	JUIL	AOUT
1	.	5.0	3.3
2
3	.	.	4.4	0.1	.	0.8
4
5	.	.	.	2.8
6
7	0.8	0.5
8	1.8
9	.	.	.	8.5	.	0.5
10	.	.	19.9
11	.	.	6.8	2.1	17.5	.	.	.
12	6.7	.	0.7
13	6.5
14	0.2	1.5	.	.	.	0.3	.
15	.	.	2.0
16	.	.	0.8
17
18	.	.	0.5	0.4	.	4.0	1.9
19	.	.	1.0	2.5
20	.	6.2	37.5	.	.
21	8.3	6.3
22	.	0.7	1.0	.	42.3	.	.	.
23	5.0	0.8	0.8
24
25	.	.	.	0.2	.	.	1.9
26	.	0.4	0.3	9.5
27	.	.	9.7	.	.	1.5
28	.	12.7
29	.	13.7
30	.	5.5	2.0	.	.	.	6.5
31
Tot.	26.7	50.5	50.4	24.5	1.8	7.5	17.6	0.0	59.9	37.5	0.3	4.6

HAUTEUR ANNUELLE : 281.3 mm

PLUVIOMETRE 32 BASSIN VERSANT DE L'OUED EL HISSIANE
JEBEL SEPPAMA (TUNISIE CENTRALE)

1982-1983

JOUR	SEPT	OCTO	NOVE	DECE	JANV	FEVR	MARS	AVRI	MAI	JUIN	JUIL	AOUT
1	.	5.8	1.4
2
3	.	.	4.5	0.2	.	.	0.3
4
5	.	.	.	4.8
6
7	1.9	0.3
8	3.1
9	.	.	.	6.6
10	.	.	21.3	.	.	1.4
11	.	.	7.9	1.8	22.5	0.3	.	.
12	2.1	.	0.8
13	2.6
14	0.2	5.0	0.4	.
15	.	.	6.5
16	.	.	1.5
17	2.8
18	.	.	1.3	0.5	.	5.5	2.3
19	.	.	.	3.0	4.9
20	.	7.3	.	.	0.6	46.7	.	.
21	1.0	7.3
22	.	0.3	0.2	.	34.5	.	.	.
23	1.0	0.3	0.7
24
25	.	.	.	0.7	.	.	0.3
26	.	0.5	3.5	10.7
27	.	.	8.5	.	.	2.3
28	.	16.0
29	.	19.5
30	.	5.0	1.8	.	.	.	6.9
31
Tot.	6.9	61.7	59.0	28.1	3.7	14.2	14.7	0.0	57.2	47.0	0.4	6.2

HAUTEUR ANNUELLE : 299.1 mm

PLUVIOMETRE 33 BASSIN VERSANT DE L'OUED EL HISSIANE
JEBEL SEPPAMA (TUNISIE CENTRALE)

1982-83

JOUR	SEPT	OCTO	NOVE	DECE	JANV	FEVR	MARS	AVRI	MAI	JUIN	JUIL	AOUT
1	.	5.4	1.3
2
3	.	.	4.7	0.1	.	.	0.2
4
5	.	.	.	4.6
6
7	1.5	0.1
8	2.8
9	.	.	.	9.0
10	.	.	19.6	.	.	1.2
11	.	.	7.5	1.6	20.7	0.1	.	.
12	1.7	.	0.7
13	1.4
14	0.3	4.2	0.2	.
15	.	.	5.0
16	.	.	1.3
17	2.4
18	.	.	1.2	0.4	.	4.8	2.0
19	.	.	.	2.3	4.3
20	.	7.2	.	.	0.4	41.4	.	.
21	0.7	6.5
22	.	0.4	0.1	35.0	.	.	.
23	0.8	0.8	0.5
24
25	.	.	.	0.5	.	.	0.1
26	.	0.6	3.0	9.6
27	.	.	6.0	.	.	2.1
28	.	13.5
29	.	20.0
30	.	5.7	1.5	.	.	.	5.5
31
Tot.	4.9	61.3	51.8	28.0	3.2	12.3	11.8	0.0	55.8	41.5	0.2	5.2

HAUTEUR ANNUELLE : 275.9 mm

PLUVIOMETRE 34 BASSIN VERSANT DE L'OUED EL HISSIANE
JEBEL SEMPAMA (TUNISIE CENTRALE)
1982-1983

JOUR	SEPT	OCTO	NOVE	DECE	JANV	FEBV	MARS	AVRI	MAI	JUIN	JUIL	AOUT
1	.	5.3	1.3
2	0.3	.	.	0.1
3	.	.	4.5
4	.	.	.	4.4
5
6	1.4	0.1
7	3.4
8	.	.	.	6.8	.	1.3
9	.	.	19.5
10
11	.	.	8.0	1.6	.	.	.	22.9	0.3	.	.	.
12	1.4	.	0.1
13	1.4	0.3	.
14	0.3	.	.	.	4.5
15	.	.	5.7
16	.	.	2.3
17	3.0
18	.	.	1.5	0.7	5.0	1.9
19	.	.	.	2.2	4.8	.
20	.	7.8	.	0.5	47.0	.	.	.
21	0.5	8.6	38.7
22	.	0.3	.	.	.	0.2
23	1.0	0.4	0.4	.
24
25	.	.	.	0.9	.	0.2
26	.	0.4	1.7	11.0
27	.	.	7.7	.	2.4
28	.	15.5
29	.	17.7
30	.	5.9	1.7	.	.	7.1
31
Tot.	4.6	61.5	54.0	27.6	3.9	13.2	14.2	0.0	61.9	47.3	0.3	5.4

HAUTEUR ANNUELLE : 293.9 mm

PLUVIOMETRE 35 BASSIN VERSANT DE L'OUED EL HISSIANE
JEBEL SEMPAMA (TUNISIE CENTRALE)
1982-1983

JOUR	SEPT	OCTO	NOVE	DECE	JANV	FEBV	MARS	AVRI	MAI	JUIN	JUIL	AOUT
1	.	4.6	0.8
2
3	.	.	4.3	0.2	.	.	0.2
4
5	.	.	.	4.5
6
7	1.3	0.2
8	3.3
9	.	.	.	5.8	.	1.1
10	.	.	20.0
11	.	.	7.6	1.6	21.7	0.2	.	.
12	1.0	.	0.3
13	1.4
14	0.3	.	.	.	4.5	0.2	.
15	.	.	4.7
16	.	.	2.2
17	3.0
18	.	.	1.2	0.6	4.7	1.9
19	.	.	0.9	5.0
20	.	6.3	.	.	0.4	46.4	.	.
21	0.6	6.7
22	.	0.5	0.1	.	37.9	.	.	.
23	0.7	0.3
24
25	.	.	.	0.5	.	0.2	0.4
26	.	0.4	1.5	10.6
27	.	.	6.7	.	2.3
28	.	15.2
29	.	17.3
30	.	5.8	1.3	.	.	.	7.6
31
Tot.	4.0	56.8	50.6	24.5	3.7	12.4	14.7	0.0	59.8	46.6	0.2	5.8

HAUTEUR ANNUELLE : 279.1 mm

PLUVIOMETRE 37 BASSIN VERSANT DE L'OUED EL HISSIANE
JEBEL SEMPAMA (TUNISIE CENTRALE)
1982-1983

JOUR	SEPT	OCTO	NOVE	DECE	JANV	FEBV	MARS	AVRI	MAI	JUIN	JUIL	AOUT
1	.	11.2	0.2
2	0.1
3	.	.	3.4
4
5	.	.	.	2.8
6	1.6	0.2
7	1.3
8
9	.	.	10.3
10	.	.	21.7	.	0.5
11	.	.	7.6	1.3	.	.	.	20.3	0.2	.	.	.
12	5.9	.	0.2
13	4.3
14	0.4	.	.	.	3.7	0.2	.
15	.	.	4.4
16	.	.	0.8
17	3.8
18	.	.	0.3	1.0	4.8	1.4
19	.	.	0.3	39.5	5.7	.
20	.	10.0
21	2.8	9.1	1.6	30.8
22	.	0.2	.	.	.	0.3	0.4
23	0.7
24	1.0
25	.	.	.	0.6
26	.	0.3	1.3	13.0
27	.	.	9.3	.	1.5
28	.	12.5
29	.	14.0
30	.	4.0	1.8	.	.	3.5
31
Tot.	14.1	61.3	51.0	29.3	1.3	10.5	13.2	0.0	51.1	39.7	0.2	4.4

HAUTEUR ANNUELLE : 276.1 mm

PLUVIOMETRE 38 BASSIN VERSANT DE L'OUED EL HISSIANE
JEBEL SEMPAMA (TUNISIE CENTRALE)
1982-1983

JOUR	SEPT	OCTO	NOVE	DECE	JANV	FEBV	MARS	AVRI	MAI	JUIN	JUIL	AOUT
1	.	11.2	0.3
2
3	.	.	3.7	0.1	.	.	.
4
5	.	.	.	3.4
6
7	1.3	0.2
8	1.5
9	.	.	9.5
10	.	.	19.5	.	0.5
11	.	.	8.0	1.3	19.5	0.1	.	.
12	4.4	.	0.3
13	3.8
14	0.4	.	.	.	3.2	0.1	.
15	.	.	4.7
16	.	.	0.6
17	3.8
18	.	.	0.3	1.3	4.8	1.7
19	.	.	0.5	3.1
20	.	9.5	.	.	0.2	43.4	.	.
21	1.9	8.6
22	.	0.2	0.7	.	31.2	.	.	.
23	0.8	0.2	0.3
24
25	.	.	.	0.7	.	.	0.4
26	.	0.3	1.2	11.9
27	.	.	7.8	.	1.0
28	.	11.0
29	.	13.8
30	.	3.0	1.8	.	.	.	4.3
31
Tot.	11.3	57.6	48.2	28.6	1.7	10.5	11.6	0.0	50.8	43.5	0.1	3.6

HAUTEUR ANNUELLE : 267.5 mm

PLUVIOMETRE 39 BASSIN VERSANT DE L'OUED EL HISSIANE
JEBEL SERRANA (TUNISIE CENTRALE)

PLUVIOMETRE 40 BASSIN VERSANT DE L'OUED EL HISSIANE
JEBEL SERRANA (TUNISIE CENTRALE)

1982-1983

JOUR	SEPT	OCTO	NOVE	DECE	JANV	FEBV	MARS	AVRI	MAI	JUIN	JUIL	AOUT
1	.	10.2	3.3
2	.	.	3.0	0.3	.	.	0.2
3
4	.	.	.	3.5
5
6	1.4	0.3
7	1.5
8	.	.	.	8.5	.	0.6
9	.	.	22.8
10
11	.	.	6.0	1.6	.	.	.	19.1	0.1	.	.	.
12	6.8	.	1.7
13	3.9
14	0.4	.	.	.	3.3	0.3	.	.
15	.	.	2.3
16	.	.	0.7
17	4.2
18	.	.	0.4	0.7	5.4	1.4
19	.	.	.	0.6	3.9	.
20	.	7.9	.	.	0.4	.	.	.	38.6	.	.	.
21	3.4	8.7	.	.	.	1.6	.	35.0
22	.	0.5	.	.	.	0.3	0.7	.
23	0.5
24	.	.	.	0.5	.	1.6
25
26	.	0.2	1.2	13.0
27	.	.	9.0	.	1.2
28	.	13.5
29	.	16.3
30	.	6.0	2.2	.	.	.	4.6
31
Tot.	15.0	63.3	54.6	28.4	1.9	10.5	15.1	0.0	54.4	38.7	0.3	5.1

HAUTEUR ANNUELLE : 227.3 mm

1982-1983

JOUR	SEPT	OCTO	NOVE	DECE	JANV	FEBV	MARS	AVRI	MAI	JUIN	JUIL	AOUT
1	.	10.5	0.3
2	.	.	5.1	0.3	.	0.6
3
4	.	.	.	4.0
5
6
7	2.0	0.8
8	1.5
9	.	.	.	10.7
10	.	.	25.5	.	0.6
11	.	.	7.9	1.7	19.0	2.6	.	.
12	11.0
13	2.1
14	0.5	.	.	.	3.0	0.5	.
15	.	.	4.5
16	.	.	0.7
17	4.7
18	.	.	2.1	0.5	4.6	1.8
19	.	.	.	2.7	2.7
20	.	13.7	41.3	.	.
21	3.7	2.5
22	.	1.0	.	.	.	1.3	.	15.8
23	2.3	.	.	0.2	.	0.6	0.9
24
25	.	.	.	0.7	.	0.6
26	.	0.8	0.4	11.3
27	.	.	10.2	.	1.7
28	.	13.3
29	.	12.0
30	.	10.1	2.2	.	.	3.5
31
Tot.	19.6	63.9	58.9	31.8	1.5	9.9	24.5	0.0	55.1	43.9	0.5	5.0

HAUTEUR ANNUELLE : 304.6 mm

PLUVIOMETRE 49 BASSIN VERSANT DE L'OUED EL HISSIANE
JEBEL SERRANA (TUNISIE CENTRALE)

1982-1983

JOUR	SEPT	OCTO	NOVE	DECE	JANV	FEBV	MARS	AVRI	MAI	JUIN	JUIL	AOUT
1	.	5.3	2.7
2
3	.	.	4.5	0.2	.	.	0.2
4
5	.	.	.	2.8
6
7	0.6	0.3
8	0.6
9	.	.	.	7.3
10	.	.	20.7	.	0.5
11	.	.	6.5	2.3	17.9	.	.	.
12	7.0	.	1.5
13	7.0
14	0.5	3.5	.	.	.	0.3	.	.
15	.	.	0.8
16	.	.	0.7
17	3.8
18	.	.	0.2	0.4	3.8	1.6
19	.	.	.	0.5	4.2	.
20	.	6.0	.	.	0.4	32.7	.	.
21	8.2	7.0	0.9	.	36.5	.	.	.
22	.	0.3	0.6	0.9
23	4.8
24
25	1.1
26	.	0.3	1.0	10.5
27	.	.	8.0	.	.	0.5
28	.	11.7
29	.	13.6
30	.	6.5	2.3	.	.	.	6.3
31
Tot.	27.5	90.7	48.9	23.8	1.0	8.3	24.9	0.0	54.6	32.7	0.3	5.6

HAUTEUR ANNUELLE : 258.3 mm

PLUVIOMETRE 80 BASSIN VERSANT DE L'OUED EL HISSIANE
JEBEL SERRANA (TUNISIE CENTRALE)

PLUVIOMETRE 81 BASSIN VERSANT DE L'OUED EL HISSIANE
JEBEL SERRANA (TUNISIE CENTRALE)

1982-1983

JOUR	SEPT	OCTO	NOVE	DECE	JANV	FEVR	MARS	AVRI	MAI	JUIN	JUIL	AOUT
1	.	4.6	2.3
2
3	.	.	4.3	0.5	.	.	.
4
5	.	.	.	2.0
6	0.5
7
8	0.5
9	.	.	.	6.7	.	0.5
10	.	.	19.8	5.5	0.5	.	.
11	13.0	.	.	.
12	6.3	.	1.4
13	6.8	0.5	.
14	0.5	3.5
15	.	.	0.4
16	.	.	0.5
17	3.5
18	3.0	1.5
19	.	.	.	0.3	4.0
20	.	5.9	.	.	0.5	34.5	.	.
21	7.5	6.8
22	.	0.4	0.5	.	39.0	.	.	.
23	4.0	0.5	.	.	.	0.5	.
24
25	1.0
26	.	.	.	9.8
27	.	.	8.6
28	.	12.3
29	.	13.5
30	.	6.5	2.3	.	.	.	4.5
31
Tot.	25.1	30.0	45.9	20.6	1.0	7.0	12.0	0.0	38.0	35.0	0.5	4.5

HAUTEUR ANNUELLE : 259.6 mm

1982-1983

JOUR	SEPT	OCTO	NOVE	DECE	JANV	FEVR	MARS	AVRI	MAI	JUIN	JUIL	AOUT
1	.	9.5
2
3	.	.	3.5	0.3	.	0.5
4
5	.	.	.	2.5
6
7
8	1.0	.	1.5	.	0.3
9	.	.	.	10.8
10	.	.	19.5	.	0.5
11	.	.	5.5	1.5	19.0	0.4	.	.
12	4.0	.	1.5
13	4.5
14	0.4	3.5	0.3	.
15	.	.	4.5
16	.	.	1.0
17
18	.	.	0.5	.	.	4.5	2.5
19	.	.	.	1.0	.	1.5
20	.	6.3	.	.	0.5	49.5	.	5.4
21	2.5	6.5
22	.	0.5	1.5	29.1	.	0.4
23	1.0	0.5
24	0.5	.	.	.
25	.	.	.	0.5	.	.	0.5
26	.	0.5	.	11.5
27	.	9.0	.	.	.	2.0
28	.	11.9
29	.	15.5
30	.	4.8	2.0	.	.	.	3.5
31
Tot.	11.9	55.5	47.0	27.8	1.5	10.5	11.5	0.0	48.4	49.9	0.3	6.6

HAUTEUR ANNUELLE : 270.9 mm

PLUVIOMETRE 86 BASSIN VERSANT DE L'OUED EL HISSIANE
JEBEL SERRANA (TUNISIE CENTRALE)

1982-1983

JOUR	SEPT	OCTO	NOVE	DECE	JANV	FEVR	MARS	AVRI	MAI	JUIN	JUIL	AOUT
1	.	4.5	0.8
2
3	.	.	4.4	0.2	.	.	0.3
4
5	.	.	.	4.0
6
7	1.3
8	2.8
9	.	.	.	5.9
10	.	.	17.0	.	.	0.7
11	.	.	6.8	1.3	11.5	0.5	.	.
12	0.7
13	1.3
14	0.3	4.3	0.2	.
15	.	.	4.7
16	.	.	2.0
17	2.7
18	.	.	0.9	.	.	4.3	1.5
19	.	.	.	0.8	4.5
20	.	7.0	.	.	0.3	53.5	.	.
21	0.7	7.0
22	.	0.4	38.8	.	.	.
23	0.9	0.3	0.3
24
25	.	.	.	0.4
26	.	0.4	.	9.5
27	.	.	7.0	.	.	2.3
28	.	34.4
29	.	17.4
30	.	5.5	1.2	.	.	.	6.9
31
Tot.	3.9	56.6	44.8	21.9	3.1	11.6	12.7	0.0	60.5	54.0	0.2	5.1

HAUTEUR ANNUELLE : 274.4 mm