

## *Haliotrema banana* sp. n. (Monogenea: Ancyrocephalidae) from *Bodianus perditio* (Perciformes: Labridae) off New Caledonia

L.H.S. Lim<sup>1</sup> and Jean-Lou Justine<sup>2</sup>

<sup>1</sup>Institute of Biological Sciences, University of Malaya, Kuala Lumpur, 50603, Malaysia;

<sup>2</sup>Équipe Biogéographie Marine Tropicale, Unité Systématique, Adaptation, Évolution (CNRS, UPMC, MNHN, IRD), Institut de Recherche pour le Développement, BP A5, 98848 Nouméa Cedex, Nouvelle-Calédonie

Key words: Monogenea, Ancyrocephalidae, *Haliotrema banana*, *Bodianus perditio*, Labridae, New Caledonia

**Abstract.** Sixteen labrid species, including four *Bodianus* spp., were examined in New Caledonia (South Pacific) and monogeneans were found only on *Bodianus perditio* (Quoy et Gaimard). This species, *Haliotrema banana* sp. n., is the second *Haliotrema* species to be described from the labrids, the first being *Haliotrema bodiani* Yamaguti, 1968 from *Bodianus albotaeniatus* (Valenciennes), previously designated as *B. bilunulatus* (Lacépède). The new species is similar to *H. bodiani* in soft reproductive parts but differs from it in the morphologies of the hard haptor parts, mainly in the shape of the dorsal bar (bar-shaped vs V-shaped in *H. bodiani*) and ventral bar. It is similar to *Haliotrema spirale* Yamaguti, 1968 and *Haliotrema minutospirale* Yamaguti, 1968 in the shape of the anchors and bars but differs from them in the detailed structures of the copulatory organ and vaginal system.

The family Labridae includes fishes commonly known as wrasses and is the second largest family of fish after Gobiidae with 68 genera and 453 species (Randall 2005). In New Caledonia alone, 114 species have been recorded (Fricke and Kulbicki 2006). Although the Labridae includes many aquarium fish species, records of monogeneans from labrids are rare and thus far only two species of ancyrocephalids belonging to two genera, two species of capsalids from two genera and one species of microcotylid have been recorded. The two ancyrocephalids are *Haliotrema bodiani* Yamaguti, 1968 from *Bodianus albotaeniatus* (Valenciennes) (previously designated as *B. bilunulatus*) off Hawaii and *Sinodiplectanotrema argyrosomus* Zhang, Yang et Liu, 2001 [type host *Argyrosomus aureus*, now known as *Pennahia anea* (Bloch) (Sciaenidae)] from *Halichoeres nigrescens*, off the island of Hainan, China. The two capsalids are *Benedenia bodiani* Yamaguti, 1968 from *Bodianus albotaeniatus*, off Hawaii and *Neobenedenia melleni* (MacCallum, 1927) from *Bodianus rufus* (Linnaeus), while the microcotylid, *Microcotyle donavini* van Beneden et Hesse, 1863 was collected from *Labrus bergylta* Ascanius (junior synonym *L. donovani* Valenciennes) in the Atlantic, off Europe and on *Symphodus mediterraneus* Linnaeus in the Mediterranean Sea (see Yamaguti 1968, Radujkovic and Euzet 1989, Whittington and Horton 1996, Treasurer 1997, Whittington et al. 2001).

In the present investigation monogeneans belonging to *Haliotrema* Johnston et Tiegs, 1922 were collected from goldspot hogfish, *Bodianus perditio* (Quoy et Gaimard). This new species is the second species of *Haliotrema* to be described from a *Bodianus* species and

the third ancyrocephalid species described from a labrid species.

### MATERIALS AND METHODS

Specimens of the labrids were caught with hand lines on board R/V “Coris” in various places off the barrier reef, Nouméa, New Caledonia at a distance of about 20–30 km from the shore, in depths of 20–40 m. Live fishes were kept in a container with sea water and immediately brought back to the laboratory. Gills were extracted and examined in sea water under a dissecting microscope. Live monogeneans were individually picked up from the gills with fine needles and immediately processed. Some monogeneans were flattened on a slide under a coverslip with a light weight on top and fixed in 70% ethanol. These were later stained in carmine as given in Justine (2005). A few specimens were prepared with ammonium picrate glycerine. Some specimens were collected from formalin-fixed gills of *B. perditio* and monogeneans were fixed and cleared in ammonium picrate glycerine. Some of these ammonium picrate glycerine fixed specimens were washed several times in distilled water to remove the fixative and then stained in Gomori’s triple stain. The monogeneans were drawn with a microscope equipped with a camera lucida. Drawings were scanned and redrawn on a computer with Adobe Illustrator. Some images were taken using a Leica digital camera using Leica image analysis software (QWin Plus). All measurements (see Fig. 1) were taken on flat specimens and given in micrometres as average and range (minimum and maximum) given within parentheses.

The type specimens of *H. bodiani* USNPC 975-15, from the United States National Parasite Collection (USNPC), were examined and hard parts illustrated for comparison (Fig. 2), but we were not able to observe and hence not able to illustrate the soft anatomical parts.

Type specimens of the present species are deposited in the Muséum National d'Histoire Naturelle, Paris (MNHN), the Muzium Zoologi Universiti Malaya, Kuala Lumpur (MZUM) and the Helminthological Collection, Institute of Parasitology, Biology Centre, Academy of Sciences of the Czech Republic, eské Bud jovice (HCIP).

## RESULTS

Although 16 species of labrids were examined only *Bodianus perditio* was found to harbour monogeneans. The other 15 labrid species included three species of *Bodianus*, namely *B. axillaris* (Bennett), *B. busellatus* Gomon, and *B. loxozonus* (Snyder), as well as *Cheilinus chlorourus* (Bloch), *C. trilobatus* Lacépède, *C. undulatus* Rüppell, *Choerodon fasciatus* (Günther), *C. graphicus* (De Vis), *Coris aygula* Lacépède, *Epibulus insidiator* (Pallas), *Oxycheilinus diagrammus* (Lacépède), *O. unifasciatus* (Streets), *Stethojulis strigiventer* (Bennett), *Thalassoma lutescens* Lay et Bennett) and *T. nigrofasciatum* Randall.

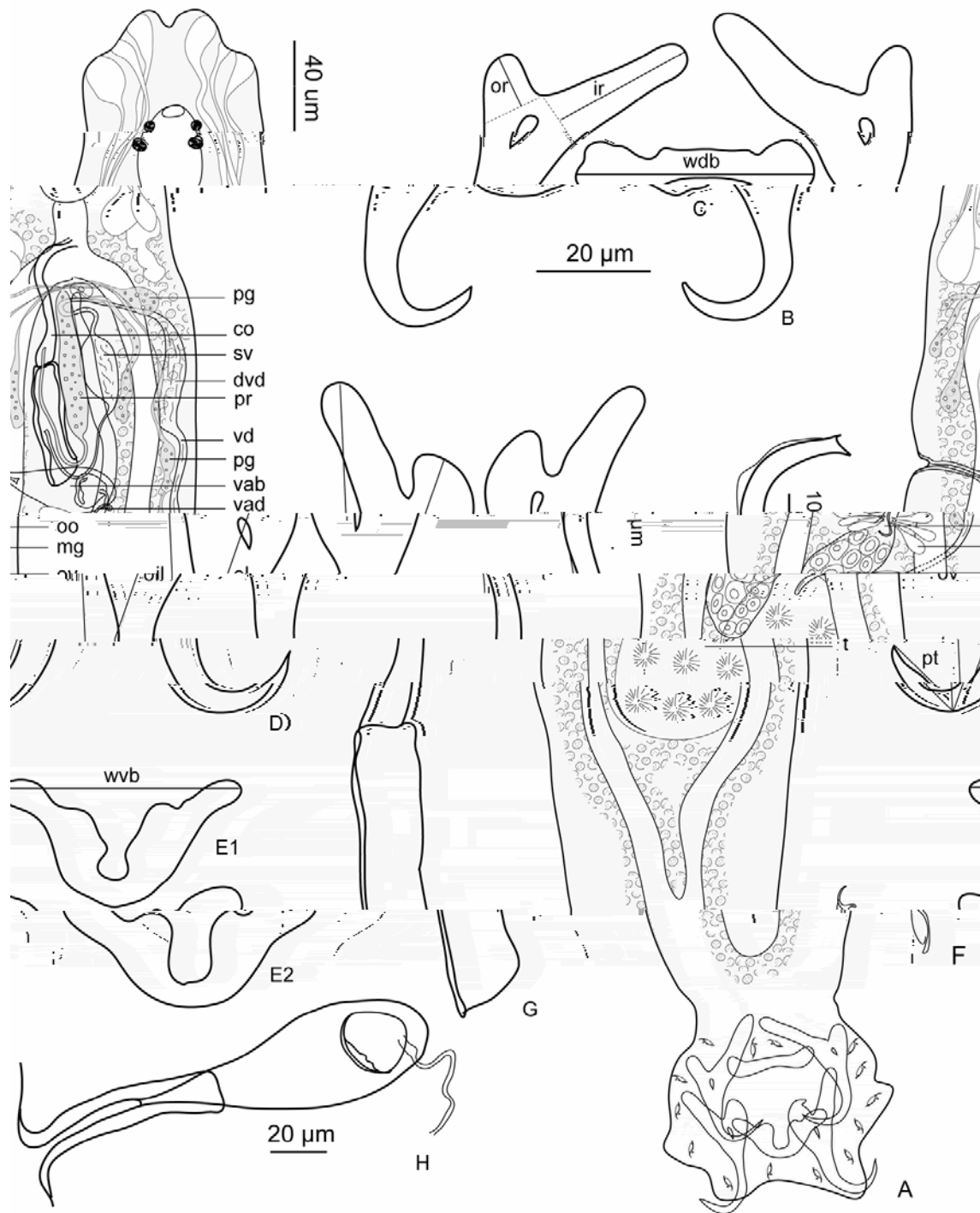
*Haliotrema banana* sp. n.

Fig. 1A–H

**Description.** Body elongate, length 635 (463–842) width 176 (128–211), anterior region with 3 pairs of cephalic glands of dactylogyrid-type and 2 pairs of pigmented eye-spots. Mouth subterminal ventral; pharynx oval comparatively small; intestine bifurcates posterior to pharynx; caeca rejoin posterior to testis and anterior to short peduncle.

Haptor set off from body, almost rectangular; length 89 (72–120) width 124 (103–149), 14 larval type marginal hooks, similar size, length 13 (12–14); two pairs of anchors with fenestrated shafts; 2 dorsal anchors with inner length 60 (55–64); outer length 49 (42–55), long inner root 24 (18–30), outer root 10 (6–13); point 17 (13–20); 2 ventral anchors with well-developed roots, inner length 63 (58–68), outer length 49 (46–54), long inner root 30 (26–37), outer root 10 (8–12), point 17 (10–21); 2 connecting bars: straight dorsal bar, 43 (38–47) wide; U-shaped ventral bar, 43 (38–49) wide.

Testis single, round, larger than ovary, postero-dorsal to and overlapping ovary; vas deferens leaves antero-medial region of testis, passes along dorsal to loop sinistral caecum to ventral side, ascends in intercaecal region to anterior part of copulatory organ, loops downwards, distends forming seminal vesicle, narrows to enter initial part of copulatory tube. Single elongate pyriform prostatic reservoir prominent, prostatic gland ducts drain into the anterior part of prostatic reservoir; prostatic duct leaves reservoir to enter initial part of copulatory tube. Copulatory organ consists of copula-



**Fig. 1.** *Haliotrema banana* sp. n. **A** – composite illustration, ventral view (pg – prostatic gland; co – copulatory organ; sv – seminal vesicle; dvd – distended vas deferens; pr – prostatic reservoir; vd – vas deferens; vab – vaginal bulb; vad – vaginal duct; oo – oötype; mg – Mehlis’ gland; ov – ovary; t – testis); **B** – dorsal anchor (ir – inner root; or – outer root); **C** – dorsal bar (wdb – width of dorsal bar); **D** – ventral anchor (il – inner root length; ol – outer root length; pt – point); **E1, E2** – ventral bar (wvb – width of ventral bar); **F** – marginal hook; **G** – copulatory tube; **H** – vagina.

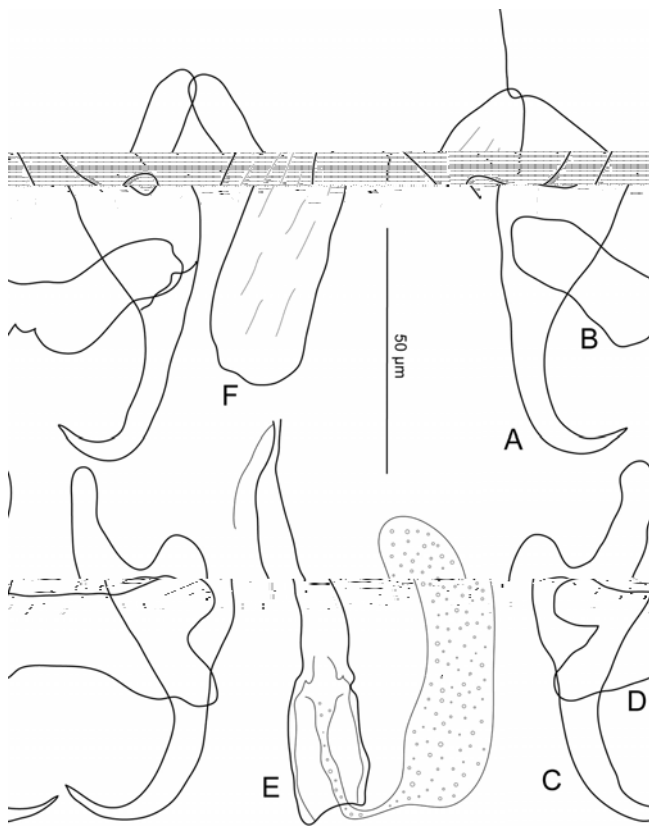


Fig. 2. *Haliotrema bodiani* Yamaguti, 1968, hard parts of holotype. A – dorsal anchor; B – dorsal bar; C – ventral anchor; D – ventral bar; E – copulatory tube; F – vagina.

species is bar-shaped while that of *H. bodiani* is a broad V-shaped bar. The ventral bar is also different in the two species (Figs. 1, 2).

Other *Haliotrema* species with similar large flask-like vaginae include *H. cancescens* Yamaguti, 1968, *H. ctenochaeti* Yamaguti, 1968, *H. curvicirrus* Yamaguti, 1968, *H. flexicirrus* Yamaguti, 1968, *H. macracantha* Yamaguti, 1968, *H. palmatum* Yamaguti, 1968, *H. serpenticirrus* Yamaguti, 1968, *H. spirale* Yamaguti, 1968, while *H. brotulae* Yamaguti, 1968 (annulocirrus group), *H. chelicirrus* Yamaguti, 1968, *H. rectangulare* Yamaguti, 1968, *H. priacanthi* Yamaguti, 1968 and *H. sigmodocirrus* Yamaguti, 1968 have smaller vaginal ‘flasks’ and longer vaginal ducts (Klassen 1994). Based on the combination of vaginal ‘flask’, U-shaped ventral bar and copulatory organ, this new species is similar to *H. spirale* from *Brotula multibarbata* Temminck et Schlegel and *H. minutospirale* Yamaguti, 1968 from *Parupeneus cyclostomus* Lacépède (junior synonym *P. chryserydros*), *P. pleurostigma* Bennett and *P. multifasciatus* Quoy et Gaimard. However, in *H. spirale* the filament-like accessory piece is more prominent and longer while in *H. banana* the filamentous accessory piece is not obvious. *Haliotrema minutospirale* is different from this new species in the shape of the vagina as well as in the copulatory organ.

## DISCUSSION

This new species of *Haliotrema* has a large flask-shaped vagina, a small medial ovary, a large round dorsal testis with the vas deferens looping the left intestinal caecum to the ventral side, a simple copulatory organ, a large prominent prostatic reservoir, four anchors, two bars and 14 marginal hooks. Klassen (1994) in his analysis of *Haliotrema* species from boxfishes proposed a *bodiani* group which included *H. bodiani*, *H. balisticus* (MacCallum, 1915), *H. priacanthi*, *H. pacificus* (Mizelle et Kritsky, 1969), *H. cornutus* (Mizelle et Kritsky, 1969), *H. ornatum* Yamaguti, 1968 and *H. teuthis* (MacCallum, 1915). The present new species is different from the *Haliotrema* species within the *bodiani* group. A prominent flask-shaped vagina as observed in the present new *Haliotrema* is found in other *Haliotrema* species not within the *bodiani* group (Klassen 1994); for instance *H. spirale* has a vagina of similar shape, copulatory organ and anchors but belongs to the *spirale* group.

This is the third ancyrocephalid species for the Labridae and the second ancyrocephalid species to be described from a *Bodianus* species. The first species, *H. bodiani* was described by Yamaguti (1968) from *Bodianus bilunulatus* (Lacépède) off Hawaii. According to the latest revision of *Bodianus* by Gomon (2006), *B. bilunulatus* is restricted to the Indian Ocean and Central Pacific, and the host of *H. bodiani* should now be designated as *Bodianus albotaeniatus* (Valenciennes) (previously considered a subspecies of *B. bilunulatus*).

Gomon (2006) recognized 43 species and 10 subgenera in *Bodianus*; interestingly, *B. albotaeniatus* and *B. perditio*, the two species in which monogeneans have been found, are both members of the subgenus *Diastodon* Bowdich, 1825. No ancyrocephalid has been recorded from the other nine subgenera. However, not all members of *Diastodon* harbour ancyrocephalid monogeneans, shown by their absence in two other species of the subgenus, *B. (D.) busellatus* and *B. (D.) loxozonus*, which we have examined in New Caledonia. As already noted the capsalids recorded from *Bodianus* spp. are *Benedenia bodiani* from *B. (D.) albotaeniatus* and *Neobenedenia melleni* from *B. rufus*, a member of the subgenus *Bodianus*. It should be noted that *N. melleni* is a species with wide host specificity and common under culture situations (Whittington and Horton 1996). No capsalid has been found on any of the *Bodianus* spp. nor on any of the labrids examined thus far in New Caledonia. However, the report (Zhang et al. 2001) of *Sinodiplectanotrema argyrosomus*, previously described from the sciaenid, *Pennahia anea*, on the labrid *Halichoeres nigrescens*, should be re-evaluated.

The paucity of monogeneans on Labridae, despite being a species-rich family (see Introduction), is further corroborated by the fact that of the 16 labrid species examined in New Caledonia, only one species, *B. perditio* was found to harbour monogeneans. However, this

paucity of monogeneans is not paralleled by other parasitic groups. Besides *H. banana*, the gills of *B. perditio* are inhabited by four species of copepods, *Hatschekia* sp. (Hatschekiidae), *Dissonus* sp. (Dissonidae), *Lepeophtheirus* sp. (Caligidae) and *Lernanthropus* sp. (Lernanthropidae) and one larval gnathiid isopod (Justine, personal observation). Eggs of *Huffmanella ossicola* Justine, 2004, a trichosomoidid nematode described from *Bodianus loxozonus* (see Justine 2004), were found within the arch gill bones and other bones of *B. perditio* (new host record). The digestive tract harbours the lepecreadiid digenean *Intusatrium robustum* Durio et Manter, 1968 (Durio and Manter 1968, Bray and Justine 2006) and an unidentified cucullanid nematode. In total the fish harbours nine parasite species, including seven in the gills.

It is interesting to note that the Gobiidae, the largest marine fish family, is also relatively poor in monogenean fauna and has a single *Haliotrema* species (Sasal et al. 1998) reported thus far.

## REFERENCES

- BRAY R., JUSTINE J.-L. 2006: *Hypocreadium toombo* n. sp. (Digenea: Lepocreadiidae) in the yellow-spotted triggerfish *Pseudobalistes fuscus* (Perciformes: Balistidae) and additional lepecreadiids parasitizing fishes from the waters off New Caledonia. *Zootaxa* 1326: 37–44.
- DURIO W.O., MANTER H.W. 1968: Some digenetic trematodes of marine fishes of New Caledonia. Part II. Opecoelidae and Lepocreadiidae. *J. Parasitol.* 54: 747–756.
- FRICKE R., KULBICKI M. 2006: Checklist of the shore fishes of New Caledonia. In: C. Payri and B. Richer de Forges (Eds.), *Compendium of Marine Species from New Caledonia*. Documents Scientifiques et Techniques 117. Institut de Recherche pour le Développement, Nouméa, New Caledonia, pp. 313–357.
- GOMON M. 2006: A revision of the labrid fish genus *Bodianus* with descriptions of eight new species. *Rec. Aust. Mus., Suppl.* 30: 1–133.
- JUSTINE J.-L. 2004: Three new species of *Huffmanella* Moravec, 1987 (Nematoda, Trichosomoididae) from the gills of marine fish off New Caledonia. *Syst. Parasitol.* 59: 29–37.
- JUSTINE J.-L. 2005: Species of *Pseudorhabdosynochus* Yamaguti, 1958 (Monogenea, Diplectanidae) from *Epinephelus fasciatus* and *E. merra* (Perciformes, Serranidae) off New Caledonia and other parts of the Indo-Pacific Ocean, with a comparison of measurements of specimens prepared with different methods and a description of *P. caledonicus* n. sp. *Syst. Parasitol.* 62: 1–37.
- KLASSEN G.J. 1994: Phylogeny of *Haliotrema* species (Monogenea: Ancyrocephalidae) from boxfishes (Tetraodontiformes, Ostracidae): are *Haliotrema* from boxfishes monophyletic? *J. Parasitol.* 80: 596–610.
- RADUKOVIC B.M., EUZET L. 1989: Parasites des poissons marins du Montenegro: Monogènes. *Acta Adriatica*, Split 30: 51–135.
- RANDALL J.E. 2005: Reef and Shore Fishes of the South Pacific. New Caledonia to Tahiti and the Pitcairn Islands. University of Hawaii Press, Honolulu, 707 pp.
- SASAL P., PAGÈS J.-R., EUZET L. 1998: *Haliotrema cupensis* n. sp. (Monogenea, Ancyrocephalidae) from a marine gobiid (Teleostei, Perciformes) of the Mediterranean Coast. *Syst. Parasitol.* 39: 107–112.
- TREASURER J.W. 1997: Parasites of wrasse (Labridae) in inshore waters of west Scotland stocked as cleaner fish of sea lice (Caligidae) on farmed Atlantic salmon. *J. Fish Biol.* 50: 895–899.
- WHITTINGTON I.D., DEVENNEY M.R., WYBORN S.J. 2001: A revision of *Benedenia* Diesing, 1858 including a redescription of *B. sciaenae* (van Beneden, 1856) Odhner, 1905 and recognition of *Menziesia* Gibson, 1976 (Monogenea). *J. Nat. Hist.* 35: 663–777.
- WHITTINGTON I.D., HORTON M.A. 1996: A revision of *Neobenedenia* Yamaguti, 1963 (Monogenea: Capsalidae) including a redescription of *N. melleni* (MacCallum, 1927) Yamaguti, 1963. *J. Nat. Hist.* 30: 1113–1156.
- YAMAGUTI S. 1968: Monogenetic Trematodes of Hawaiian Fishes. University of Hawaii Press, Honolulu, 287 pp.
- ZHANG J.Y., YANG T.B., LIU L. 2001: Monogeneans of Chinese Marine Fishes. Agriculture Press, Beijing, 400 pp. (In Chinese.)