



distinctly wider than second,  $27.5 \pm 0.7$  (24-32)  $\mu\text{m}$  in diameter including spines; margin with distinct fringe of 40-45 spines, anteriorly directed. Second labial annulus  $22.7 \pm 0.6$  (19-26)  $\mu\text{m}$  wide, bearing short spines, laterally directed. Amphid aperture slit-like on either sides of oral opening. Body annuli retrorse, each bearing a continuous fringe of spines (except on postvulval annuli). Spine shape variable. Anterior to vulva spines straight, wide at distal end, clavate (T-shaped) or bifurcate (Y-shaped). All shapes present within an individual, in unequal proportions, inconsistently alternating with each other on single annulus. Near and posterior to vulva, ventrally, annuli with elongate, spatulate projections posteriorly bifurcate or distinctly digitate. Single, short spine occasionally present between spatulate projections. Dorsally, postvulval annuli with short fringes of spines, or with short, palmate projections each bearing two to six straight or bifurcate spines. Spine surface variable within an individual. Spines smooth, or with three to eight, minute, 0.25-0.50  $\mu\text{m}$  long triangular projections on sides, and narrow, smooth, plate-like projection around tip; attached to inner surface of spine. Minute projections present on about 80-85 % body spines of California population, less common on first two body annuli spines than remainder, absent on ventral, postvulval spatulate spines, present on dorsal postvulval spines. Small, rectangular, block-like structures present on surface of body annuli fringe, just anterior to retrorse spines; absent in ventral, postvulval annuli. Vulva  $36.0 \pm 1.3$  (30-45)  $\mu\text{m}$ , or 6th (5-7th) annulus from terminus. Vulval lips plate-like, protruded, continuous with body profile, without spines or other ornamentation; vulval aperture transverse. Anus not visible even through SEM.

*Male* : Not found.

#### REMARKS

Confusion over the identification of *O. civellae* has been largely due to the presence of variable cuticular ornamentation and Steiner's (1949) original description of juveniles instead of adults. Female *O. civellae* were later described by Golden and Friedman (1964), being distinguished by a continuous fringe of annular spines anterior to the vulva, and alternate rows of palmate projections in the postvulval region. Thereafter, *Criconema celetum* Wu, 1960, *C. eurysoma* Golden & Friedman, 1964, and *C. vishwanathum* Edwards & Misra, 1966 were transferred to the genus *Ogma* and considered population variants and, therefore, synonyms of *O. civellae* (see Raski & Luc, 1987). Variability in spine shape is reported for most populations of *O. civellae* (Edward & Misra, 1966; Mehta & Raski, 1971; Ebsary, 1981; Castillo *et al.*, 1990). Block-like structures anterior to the spines were only reported by Wu (1960) in specimens of *C. celetum*. With the scanning electron microscope, these structures appeared as extracuticular incrustations which were more or less consistent in

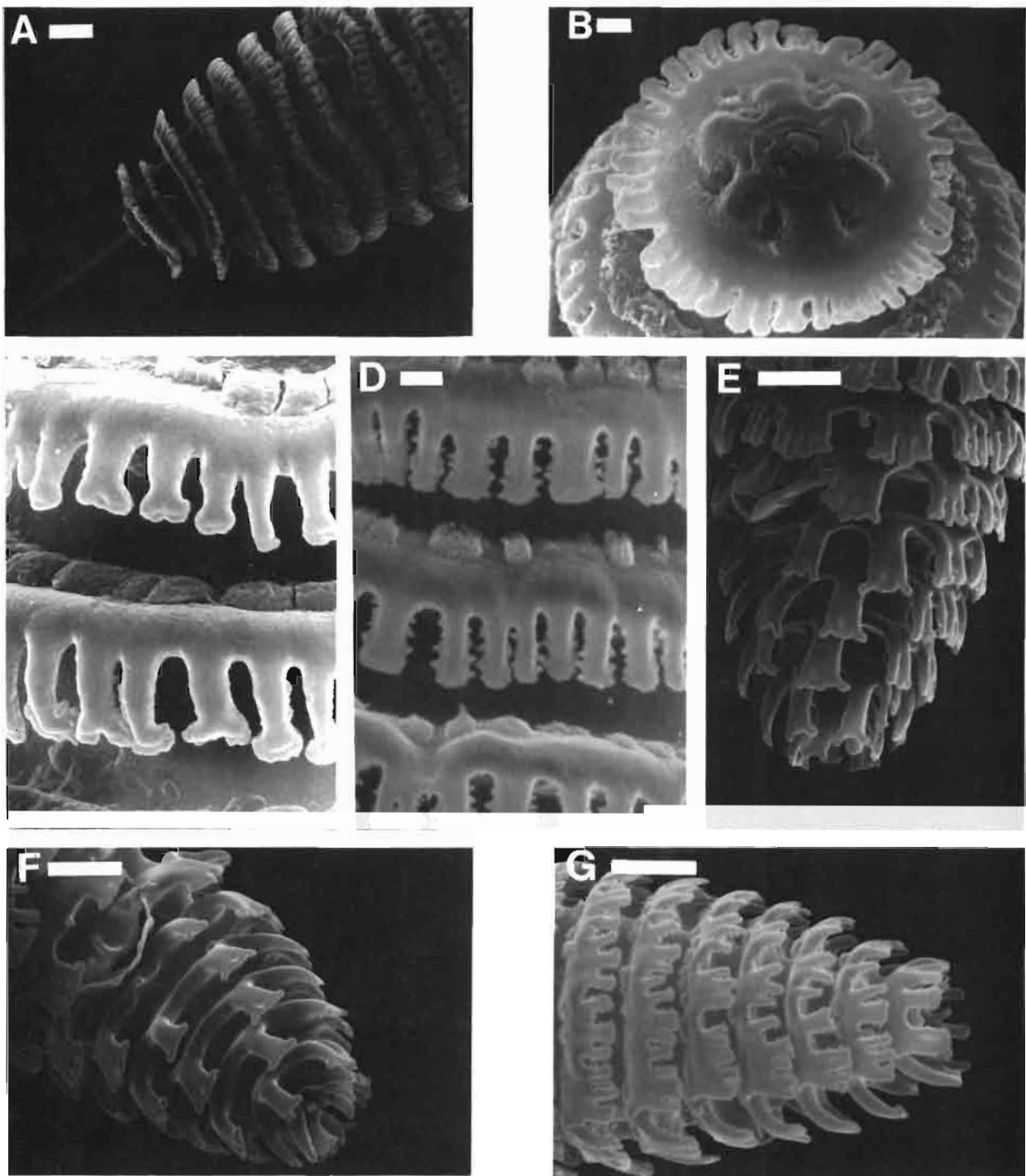
shape and arrangement on each annulus. Externally each block appeared as one solid unit, however, the internal structure of one half-broken block was columnar. Extracuticular structures have been described for only a few criconematids. The nature and origin of the structures remains unknown for most species. Jairajpuri and Southey (1984) described the extracuticular structures of *Criconema sheperdae* (Jairajpuri & Southey, 1984) Raski & Luc, 1987. The block-like incrustations of *O. civellae* clearly differ in shape and structure from the extracuticular polygonal incrustations of *C. sheperdae*. Mehta and Raski (1971) reported very fine refractive points surrounding individual body spines, and larger refractive elements on large tail spines of *O. civellae* when observed with a light microscope. With the scanning electron microscope, the refractive points were distinctly visible as minute triangular and plate-like projections surrounding individual spines. On the tail, the projections (refractive points or elements) were present only on the dorsal spines. These minute projections also appeared to be extracuticular outgrowths of the spines. They are thinner than the spines and, therefore, barely visible with a light microscope as refractive points. While these fine cuticular structures (projections and blocks) may be characteristic of certain populations, it is possible that they were obscured from observations of other reported populations due to adhering debris. Minute projections, block-like structures and all spine shapes were present in adult females from California, as well as some females found in the population of *O. palmatum* from India. Notably, spine shape and size varied more within an individual than between individuals of the Californian population (*i.e.* only the proportions of shapes and sizes varied between individual females).

The rectangular labial disc observed in the Californian population differed from the dumbbell-shaped one reported by Ebsary (1981).

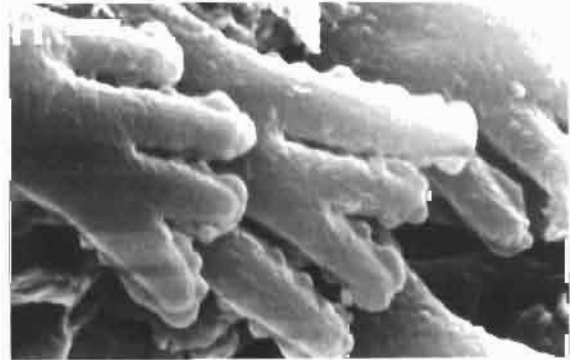
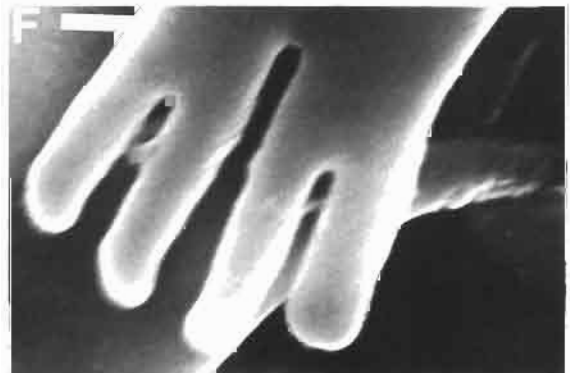
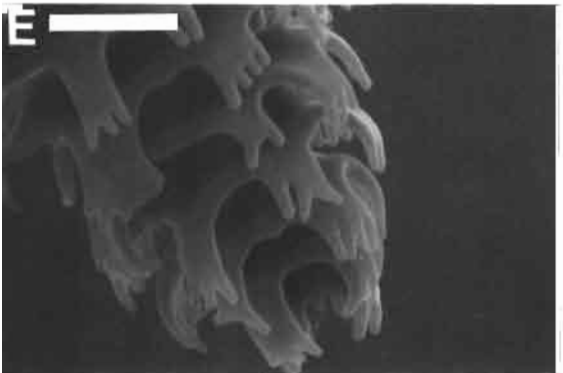
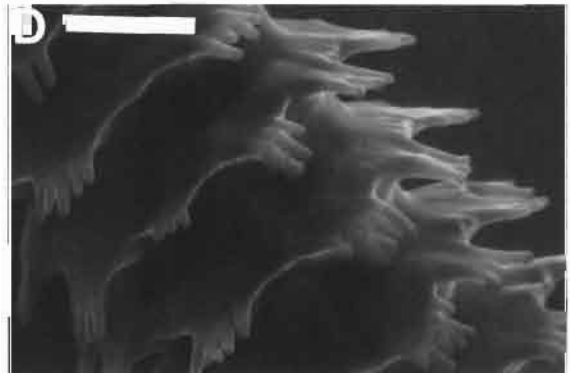
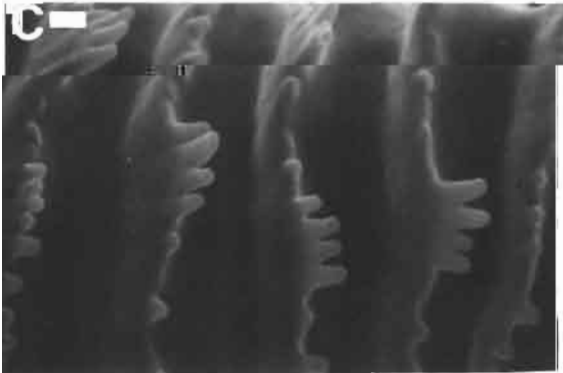
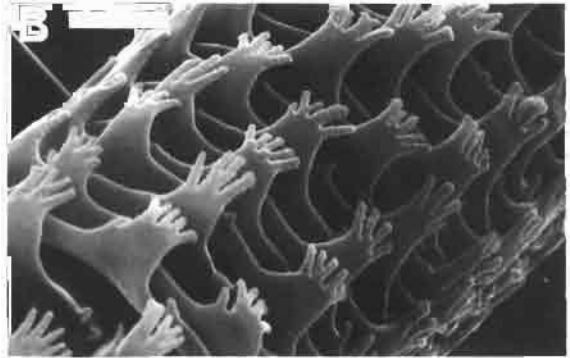
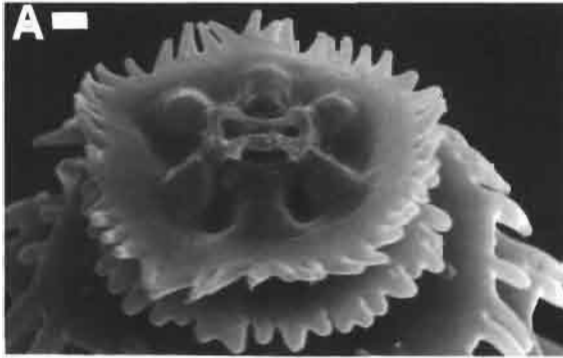
#### ***Ogma palmatum* (Siddiqi & Southey, 1962) Siddiqi, 1986 (Fig. 2, 3)**

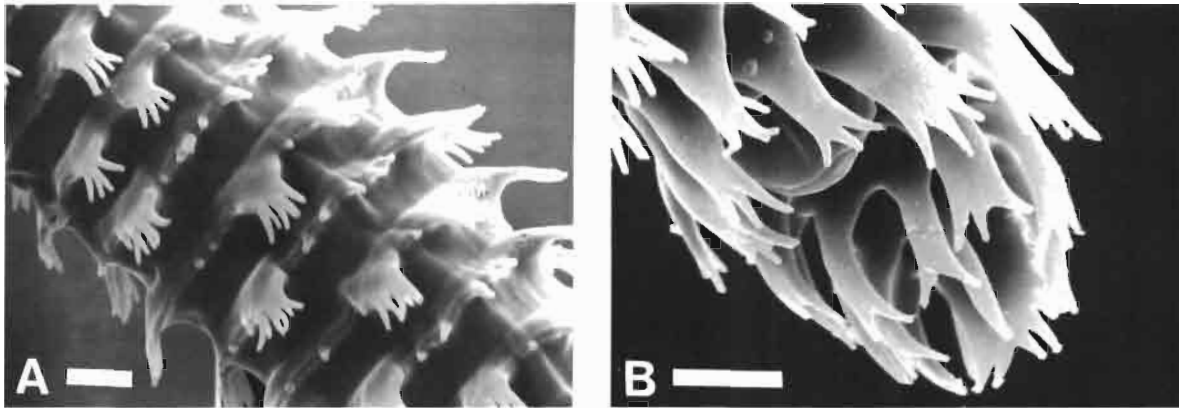
#### DESCRIPTION

*Female* : Habitus straight or slightly curved. Body stout. Body length  $432.5 \pm 51.6$  (360-584)  $\mu\text{m}$  ( $n = 11$ );  $R = 52 \pm 1.5$  (49-56). Lip region dome-shaped, with six well developed pseudolips, submedian lobes absent. Labial disc dumbbell-shaped, fused with first annulus, oral opening oval. Labial annuli two. First labial annulus wider than second,  $22.2 \pm 1.0$  (20-24)  $\mu\text{m}$  in diameter including spines; margin with distinct fringe of 45-50 spines, anteriorly directed. Second labial annulus  $19.0 \pm 1.0$  (17-22)  $\mu\text{m}$  wide, bearing a continuous fringe of spines, more or less retrorse. Amphid apertures oval, located on lateral sides of labial disc. Body annuli retrorse, each bearing hand-like (palmate) structures alternating more or less regularly with those on adjacent



**Fig. 1.** *Ogma civellae* (Steiner, 1949) Raski & Luc, 1987. Female. A : Anterior end; B : Face view; C : Annular fringe and block-like structures on 3rd and 4th annuli; D : Annular fringe at midbody; E-G : Posterior end; E : subventral view; F : Ventral view; G : Dorsal view. (Bars = A, E-G = 10  $\mu$ m; B-D = 2  $\mu$ m.)





**Fig. 3.** *Ogma palmatum* (Siddiqi & Southey, 1962) Siddiqi, 1986). Female. A : Annuli at midbody region; B : Posterior end, showing vulva. (Bars = 10  $\mu$ m.)

annuli; generally eight structures per annulus at mid body, four to six structures per postvulval annulus. Each structure bearing two to six (generally four or five) finger-like spines distally. Individual spines sometimes bifurcate; surface smooth or rough, with minute wart-like, or, triangular and plate-like projections. Postvulval spine surface usually smooth. Small, single spines occasionally occurring between palmate structures. Length of palmate structure and spines variable within a single specimen, sometimes only short spines present in irregular rows on anterior annuli, structures always elongate in posterior body. Excretory pore at 18th (18-19th) annulus. Vulva  $32.5 \pm 2.6$  (27-38)  $\mu$ m, or 6th (5-8th) annulus from terminus. Vulval lips plate-like, protruded, continuous with body profile, without spines or other ornamentation; vulval aperture transverse. Anus not visible even through SEM.

*Male* : Not found.

#### REMARKS

The specimens are in general agreement with descriptions of various populations of *O. palmatum* (Siddiqi & Southey, 1962; Golden & Friedman, 1964; De Grisse & Lagasse, 1969; Mehta & Raski, 1971; Ebsary, 1981). Jairajpuri (1963) reported variations in palmate structures of the species. Similar and further variations observed in the Darjeeling population included the presence of small, single spines between palmate structures, irregular arrangement of palmate structures, and the presence of minute projections on individual spines. The minute projections are most likely extracuticular outgrowths of the spines as observed in *O. civellae*. Variations occurred in palmate structure length, spine surface and length between and within individuals of the Darjeeling population. Pre-vulval spine surface did not vary within an individual.

The dumbbell-shaped labial disc was also found in

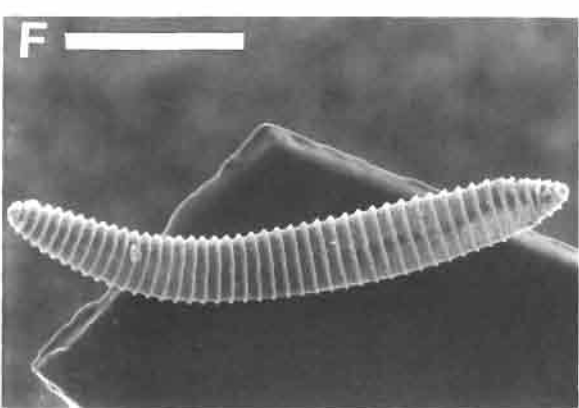
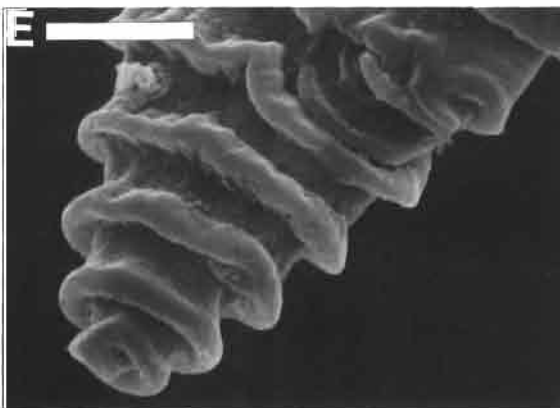
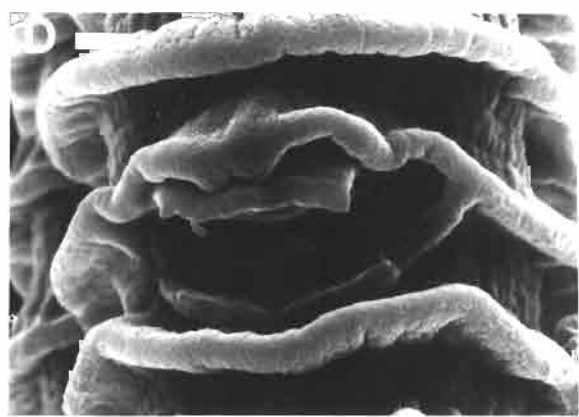
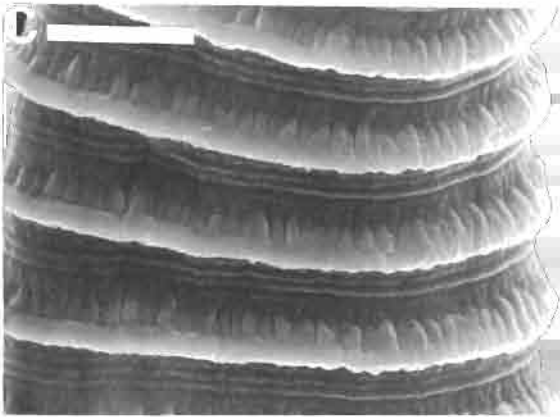
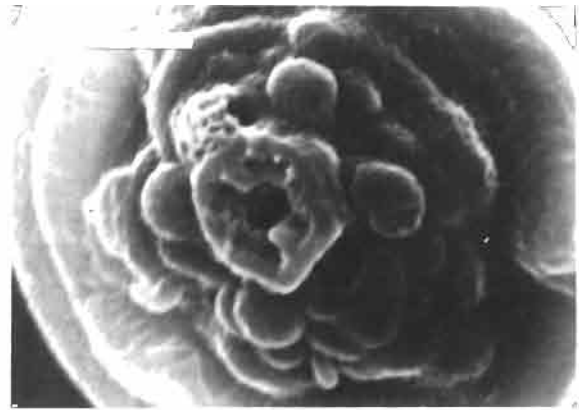
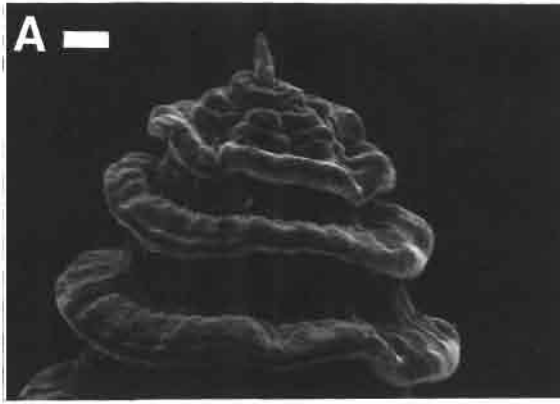
the population observed by De Grisse and Lagasse (1969), but differed from the oval shape in the original description (Siddiqi & Southey, 1962).

***Criconemella axestis***  
**(Fassuliotis & Williamson, 1959)**  
**Raski & Luc, 1987**  
 (Fig. 4)

#### DESCRIPTION

*Female* : Habitus straight or slightly curved ventrally. Body stout, tapering anteriorly and posteriorly, terminating in a blunt bulb. Body length  $381 \pm 24.9$  (330-430)  $\mu$ m ( $n = 11$ );  $R = 46 \pm 0.6$  (44-47). Labial region hemispherical with four distinct submedian lobes; labial disc hexagonal, offset, bearing four papillae; oral opening oval. Amphid apertures oval, on either lateral sides of disc. First and second body annuli projecting forward on ventral side, dorsal side projecting laterally or slightly forward. Third annulus projecting forward or laterally on ventral side, dorsal side retrorse. Remaining body annuli retrorse, with occasional anastomoses. Each annulus with three (occasionally four) fine transverse striae anteriorly forming two or three fine transverse ridges, posteriorly with a fringe of short, irregular longitudinal folds or ridges forming a rough annulus margin. Margin more rough from anterior intestine to vulva than at remaining body regions. Annulus width  $7.9 \pm 1.0$  (6-10)  $\mu$ m near midbody. Excretory pore located at 14th (12-15th) annulus from anterior end. Annulus margin curved around excretory pore. Vulva transverse, open, located at 5th (5-6th) annulus from posterior end,  $V = 91.9 \pm 0.5$  (91-93). Vulva with anterior bilobed flap; annulus margin smooth, branched and elliptical around vulva. Anus pore-like, located at 2nd-3rd annulus from terminus.

*Male* : Not found.



- DE GRISSE, A. & LAGASSE, A. (1969). L'utilisation du microscope électronique à balayage dans l'étude des nématodes. *J. Microsc.*, 8 : 677-680.
- EBSARY, B. A. (1981). Generic revision of Criconematidae (Nematoda) : *Crossonema* and related genera with a proposal for *Neocrossonema* n. gen. *Can. J. Zool.*, 59 : 103-114.
- EDWARD, J. C. & MISRA, S. L. (1966). *Criconema vishwanathum* n. sp. and four other hitherto described Criconematinae. *Nematologica*, 11 : 566-572.
- FASSULIOTIS, G. & WILLIAMSON, C. E. (1959). *Criconemoides axeste* n. sp. associated with roses in commercial greenhouses in New York state, *Nematologica*, 4 : 205-210.
- GOLDEN, A. M. & FRIEDMAN, W. (1964). Some taxonomic studies on the genus *Criconema* (Nematoda : Criconematidae). *Proc. helminth. Soc. Wash.*, 31 : 47-59.
- JAIRAJPURI, M. S. (1963). *Criconema simlaensis* n. sp. (Nematoda : Criconematidae) from India. *Z. Parasitenk.*, 23 : 235-238.
- JAIRAJPURI, M. S. & SOUTHEY, J. F. (1984). *Nothocriconema shepherdae* n. sp. (Nematoda : Criconematidae) with observations on extracuticular layer formation. *Revue Nématol.*, 7 : 73-79.
- JENKINS, W. R. (1964). A rapid centrifugal-flotation technique for separating nematodes from soil. *Pl. Dis. Repr.*, 48 : 692.
- MEHTA, U. K. & RASKI, D. J. (1971). Revision of the genus *Criconema* Hofmänner & Menzel, 1914 and other related genera (Criconematidae : Nematoda). *Indian J. Nematol.*, 1 : 145-198.
- RASKI, D. J. & LUC, M. (1987). A reappraisal of Tylenchina (Nemata). 10. The superfamily Criconematoidea Taylor, 1936. *Revue Nématol.*, 10 : 409-444.
- SEINHORST, J. W. (1959). A rapid method for the transfer of nematodes from fixative to anhydrous glycerin. *Nematologica*, 4 : 67-69.
- SIDDIQI, M. R. & SOUTHEY, J. F. (1962). *Criconema palmatum* n. sp. (Nematoda : Criconematidae) from North Devon, England. *Nematologica*, 8 : 221-224.
- STEINER, G. (1949). Plant nematodes the grower should know. *Proc. Soil Sci. Soc. Fla.*, 4 : 102-103.
- WU, L. (1960). *Criconema celetum* n. sp. (Nematoda : Criconematidae) from African violets in Canada. *Can. J. Zool.*, 38 : 913-916.