

Gold: a useful tracer in sub-Saharan laterites

A. Sanfo^a, F. Colin^a, M. Delaune^b, B. Boulangé^a, J.C. Parisot^a, R. Bradley^c and J. Bratt^c

^aORSTOM, UM GECO, URA CNRS 132, Laboratoire de Géosciences de l'Environnement, Université Aix-Marseille III, F-13397 Marseille Cedex 20, France

^bORSTOM Bondy, 70-74 route d'Aulnay, F-93000 Bondy, France

^cUtah BHP Exploration, 550 California street, San Francisco, CA 94104, USA

(Received April 6, 1993; revised and accepted April 15, 1993)

1. Introduction

Sequential and connected lateritic sequences from the Tertiary to present day can be observed in sub-Saharan conditions in northern Burkina Faso (Michel, 1973; Grandin, 1975). Here, complex iron auriferous crust systems have developed on the stable West African Craton from Proterozoic auriferous greenstone belts and volcanic tuff. In order to distinguish between chemical and physical processes which have led to the development of the lateritic systems, we propose to use visible gold particles as pathfinders.

In this paper, we focused on the lowland lateritic system (profile of pit P4) located downslope to the middle land lateritic system, where gold is associated with hydrothermally altered quartz veins and pebbles (Fig. 1).

2. Weathering pattern and distribution of visible gold

The P4 weathering profile can be divided from top to base into three main layers (Fig. 2):

The H1 sandy-clayey layer, 0.1–2 m thick, consists of a gray-greenish sandy-clayey matrix. The minus 500 μm fraction is nearly 80% by weight of the total sample. The mineralogical composition is homogeneous and consists

mainly of blunted quartz grains and kaolinite, with minor illite and smectite.

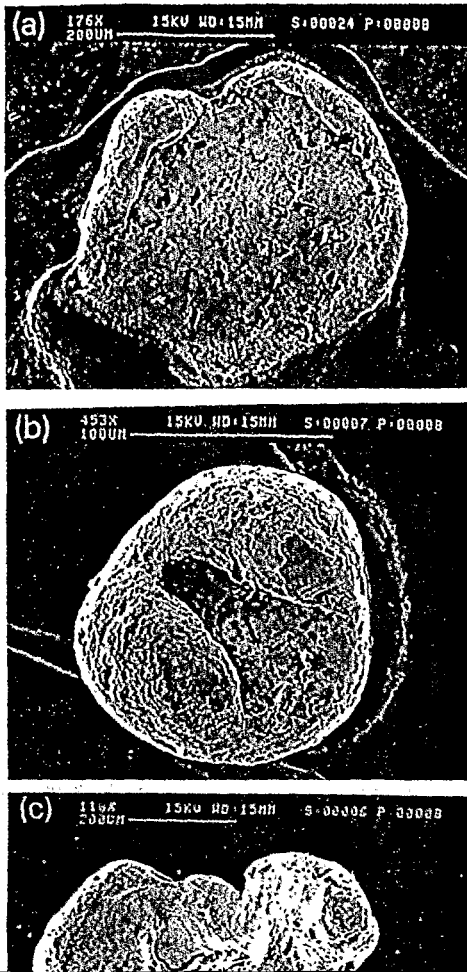
The H2 nodular layer, 1.5–1.8 m thick, is friable and consists of a red and yellow sandy-clayey matrix (25–30% of the total weight), with mainly quartz and kaolinite. Illite and smectite are less abundant at the base. In the matrix, elements above 500 μm ($\sim 75\%$ by weight) are composed of angular and blunted quartz pebbles and blocs, debris of indurated iron crust, ferruginous small plates of schist and diffuse Fe nodules. The base of the layer consists of a 20 cm thick sublayer rich in angular quartz blocs.

The H3 saprolite is 20 cm thick and consists of smectite and illite. A successive thin bed structure is clearly recognizable and expresses the in situ weathering of schist.

Gold grain sizes range from 800 to 80 μm . Visible gold contents decrease progressively downwards from the sandy-clayey layer to the saprolite, respectively from 0.15 to 0.01 g t^{-1} . In addition, gold grain sizes clearly discriminate between the two upper layers: in the nodular layer, most of the grains exhibit sizes up to 800 μm , while in the sandy-clayey layer, the 500–160 fraction predominates.

3. Morphological features and chemical composition of gold particles

More than 1000 gold particles were collected from profile P4.



euohedral crystal faces are not recognizable and particle surfaces are covered by numerous micrometric pits of dissolution associated with scratch and turned over features (Fig. 3a and b).

Within the nodular layer, particles are much less rounded. Primary euohedral crystal faces are still recognizable under SEM. Surfaces are covered by dissolution pits, without any marks of physical strain.

Within the saprolite, particles are similar to those of the overlying layer.

Ag, S, Al and Cu have been found by microprobe above the detection limit (Table 1).

To feature the distribution of silver, we use a depletion index D_i defined as:

$$D_i = (Ag_{rim}/Ag_{core}) (Au_{core}/Au_{rim})$$

If D_i is close to 1 the Ag distribution is homogeneous within the particle. When D_i tends to 0^+ , Ag is depleted in the rims.

Gold particles from median lateritic land quartz veins have a mean Ag content of 7.012% and a mean D_i -value 0.932.

Within the P4 profile, there is a notable difference between the H1 and H2 units.

Within the sandy-clayey layer, the mean D_i -value declines strongly to 0.449, while within

TABLE 1

Mean chemical composition of gold particles extracted from the P4 profile (H1 and H2 layers) and from the quartz veins of the median land lateritic system (S1)

	Au	Ag	S	Al	Cu	$D_{i(AG)}$	
P4 H1	m	94.86	5.051	0.037	0.027	0.021	0.449
	S.D.	1.455	1.171	0.008	0.012	0.01	0.23
P4 H2	m	93.413	6.435	0.068	0.061	0.0147	0.8
	S.D.	2.064	2.085	0.026	0.016	0.01	0.33
S1	m	92.32	7.012	0.0128	0.043	0.0113	0.932
	S.D.	5.516	4.84	0.0085	0.021	0.0089	0.219

m = median; S.D. = standard deviation.

the rather homogeneous distribution of silver compared to the very Ag-depleted rims. In ad-

strate that the lowland lateritic systems from northern Burkina Faso have evolved from col-