

TYROPHAGUS CURVIPENIS N.SP. FROM AN ORCHID CULTIVATION IN A GREENHOUSE IN PORTUGAL (ACARI: ACARIDAE)

A. Fain¹ and G. Fauvel²

1. Institut royal des Sciences naturelles de Belgique, 29 rue Vautier, 1040 Bruxelles, Belgique. 2. Section d'Acarologie, ENSA-M/INRA/ORSTOM, U.F.R. d'Ecologie animale et de Zoologie Agricole, Ecole Nationale Supérieure Agronomique, place Pierre Viala 2, F-34060 Montpellier, France

ABSTRACT - *Tyrophagus curvipenis* n.sp. (Acari, Acaridae) is described from orchids cultivated in a greenhouse in Portugal. The mites were feeding on algae covering the wooden structures of the greenhouse and occasionally entered the flowers where they could feed on pollen.

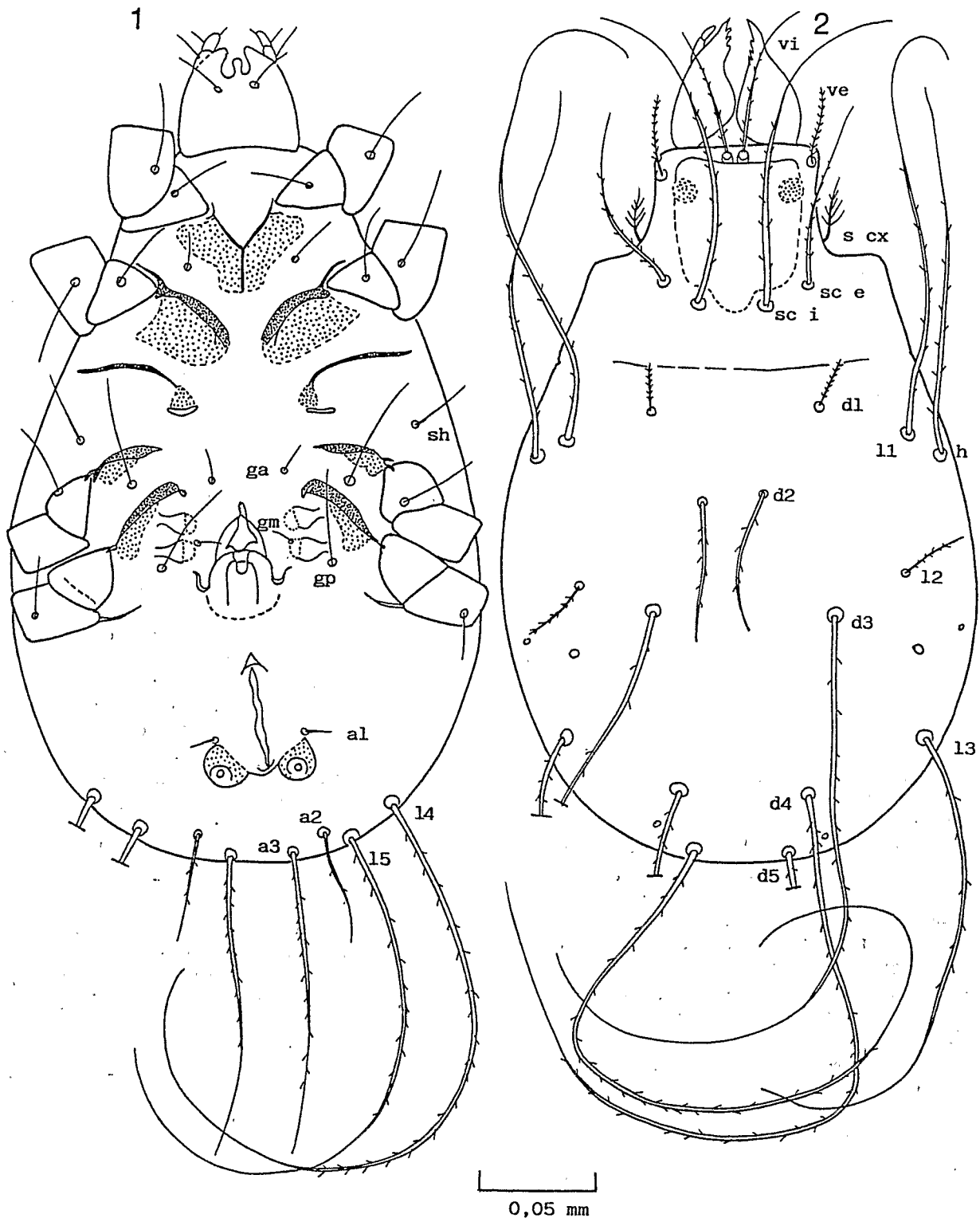
INTRODUCTION

More than 50 species have been described in the genus *Tyrophagus* Oudemans (1924). Most of these are now considered as synonyms. The number of valid

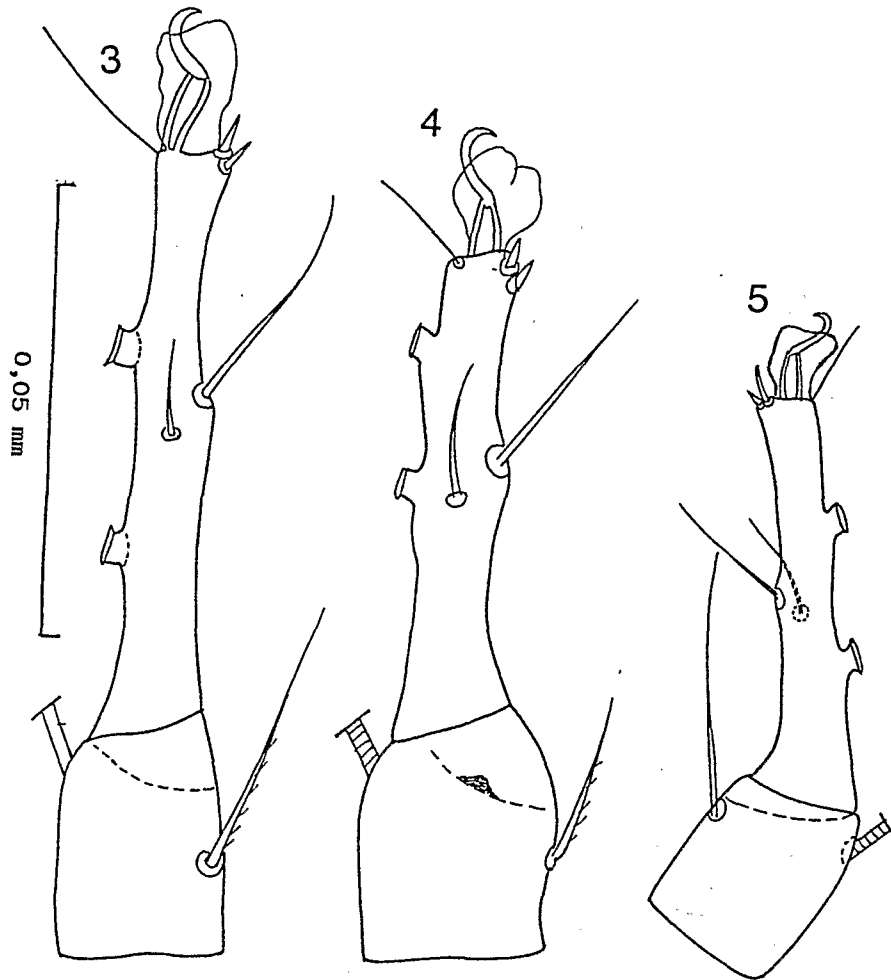
Tyrophagus curvipenis n.sp.

(Figs. 1,2,4,9-13)

Diagnosis: Small species (male 210-230 long) with



Figs 1-2 :*Tyrophagus curvipenis* n.sp. Holotype male in ventral (1) and dorsal (2) view.



Figs 3-5 :Tarsus and tibia IV in males of *Tyrophagus putrescentiae* (3), *T. curvipes* (4) and *T. javensis* (neotype) (5).

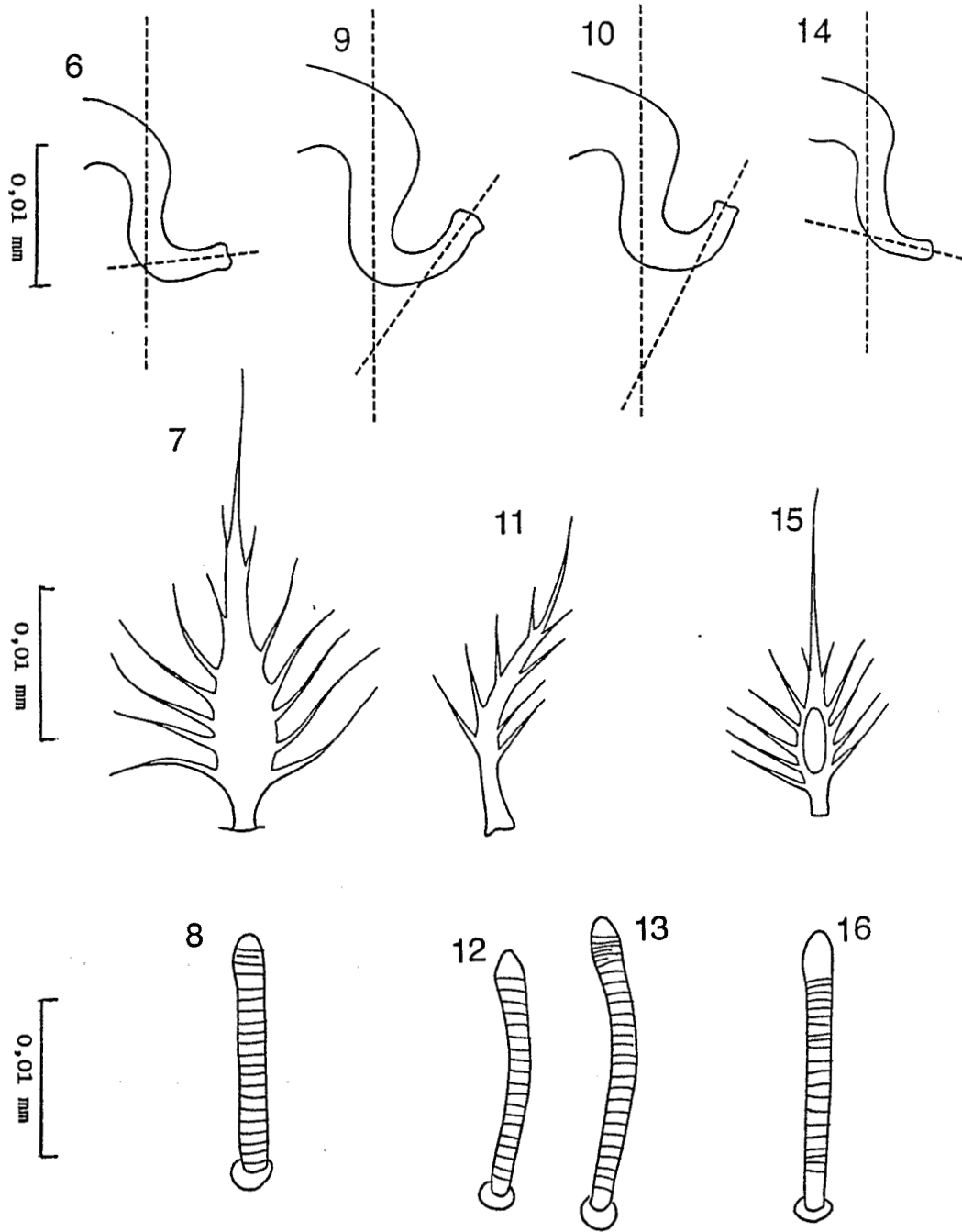
the median part an angle of 28 to 30° (instead of 75 to 80° in *T. putrescentiae*). The lateral arms supporting the penis are turned outwards. *Legs*: Tarsi 48-48-57-59 long (ambulacra not included), tibiae 24-24-22-26 long. Ratio $a+b/c = 4.1$ (holotype), 4.2 (male n°1) and 5.4 (male n°2). The apical sucker of tarsus IV is completely situated in the apical third of the tarsus. The tibia and genu IV bear a small preapical posterior triangular spur. *Solenidia*: *omega1* of tarsi II and I 20 and 16 long respectively, ratio 1.25. *Solenidia phi* of legs I-IV 100-110-130-140 long.

Female: Length and width of idiosoma in 2 paratypes: 360 x 201 and 340 x 220. Dorsum as in the male but the setae are generally longer: *vi* 105, *ve* 54,

the *a1* to *a4* are short (10 to 20), *a5* 80, *a6* 200. Setae *scx* short and narrow, with 3 pairs of short pectinations. Length of tarsi (without ambulacra): 61-63-60-78, of tibiae 27-27-24-30. Tibia and genu IV with a spur as in the male. *Solenidia omega1* of tarsi II-I 21 and 16 long respectively (ratio 1.3). Bursa about 40 long, opening at posterior margin of body. Basal sclerite of spermatheca narrow (18 to 20 wide). Genital papillae funnel-shaped, rather large.

Tritonymph: Length and width of idiosoma in 3 paratypes: 315 x 225, 305 x 230 and 285 x 180. Setae *d1*, *d2* and *l2* 21, 60 and 24 long. Setae *a1*, *a2* and *a3* 12, 21 and 120 long. Pigmented eyespots very conspicuous.

Habitat: Holotype male from orchids cultivated in



Figs 6-16 :*Tyrophagus putrescentiae*, Male: penis (6), seta *s cx* (7) and *omega 1* of tarsus II (8). *T. curvipenis*, Male: penis in 2 paratypes (9, 10), seta *s cx* (11), *omega 1* of tarsus I (12) and II (13). *T. javensis*, Male (neotype): penis (14), seta *s cx* (15) and *omega 1* of tarsus II (16).

nymphs) with the same data as the holotype. Holotype and 1 paratype male, 1 paratype female and 3 paratypes nymphs in the collection of Institut royal des sciences naturelles de Belgique. Three paratypes (female, male and tritonymph) in the collection of the ENSA-Montpellier.

Remarks: *T. curvipenis* belongs to a group of *Tyrophagus* species characterized by the presence on the scutum of a pair of pigmented eyespots. This group includes now 7 species (see the key).

By the shape of the penis this species is the closest to *T. putrescentiae* and *T. javensis*, but in these species the setae *s cx* are widened basally and carry numerous and long pectinations, while in *T. curvipenis* these setae are thin and bear only 3 to 4 pairs of short pectinations (Figs 7, 11 and 15). Moreover in this new species the penis is thicker, a little longer and more strongly curved in its apical third than in these species. The angulation of the apical third to the median third is 28 to 30°, instead of 75 to 115° in the two other species. (Figs 6, 9 and 10 and 14). Another character is the more apical situation of the apical sucker of leg IV. In *T. curvipenis* the distance *a+b* is 4.1 to 5.4 times as long as the distance *c*. In the two other species *a+b* is only 1.5 to 2 times (*putrescentiae*) or 2.15 to 2.4 times (*javensis*) longer than the distance *c*. (Figs 3, 4 and 5). Finally, *T. curvipenis* bears a small triangular preapical spur on the posterior surface of genu and tibia IV (in both sexes). This spur is lacking in the two other species. (Fig 4).

Remarks on *Tyrophagus javensis* (Oudemans, 1916)

In 1916, Oudemans described two new species of *Tyrophagus* (= *Tyroglyphus*) from the Oriental region, i.e. *T. javensis* collected from an ant, *Plagiolepis longipes*, from Salatiga, Java and *T. australasiae* taken from a pigeon (*Goura* sp.) from Jamur, New-Guinea and also found associated with *T. javensis* from ants in Salatiga.

According to Robertson (1959) who examined the typical material of both species, the specimens of *T. australasiae* collected in Salatiga belong in fact to *T. javensis*. As the typical slide of *T. javensis* was not available and probably lost this author selected the slide n° 6 containing males of *T. australasiae* (specimens from Salatiga) as "lectotype" of *T. javensis*. In 1962, Samsinak, reexamining this material, noted that this specimen is merely a "neotype" rather than a lectotype, probably owing to the fact it had not been selected in the typical series of *T. javensis*. He also considered that the true *T. australasiae*, from New Guinea, is a synonym of *T. putrescentiae*.

Through the courtesy of Dr P.J. van Helsingden, of the Museum of Natural History of Leiden, we were able to examine the slide n° 6 (2073) of the Oudemans Collection and containing the "neotype" of *T. javensis*.

This slide contains in fact 3 males. We designate as neotype the specimen which has been depicted by Samsinak (1962).

Key to the males of the *Tyrophagus* group with pigmented eyespots

1. Setae *s cx* short (less than 20) without pectinations. Lateral arms supporting the penis turned outwards. Penis very small, slightly sinuous in apical half. Setae *l3* about one third the length of posterior setae. Setae *d1, d2, l2* subequal in length (ca 40) *T. brevicrinatus* Robertson, 1959
Setae *s cx* longer and always distinctly pectinate. Setae *l3* approximately as long as remaining posterior setae. Setae *d2* distinctly longer than *d1* and *l2*. Shape of penis variable.2
2. Lateral arms supporting the penis turned inwards. Penis very small, only very slightly curved in apical third. Setae *s cx* narrow with 2 to 4 pairs of quite long pectinations. Setae *d2* about twice as long as *d1* and *l2*. Pigmented eyespots very faint.....
.....*T. robertsonae* Lynch, 1989
Lateral arms supporting the penis turned outwards (this character is not known for *T. javensis*). Penis not specially short. Pigmented eyespots conspicuous. Setae *d1, d2* and *l2* variable.3
3. Penis S-shaped with two deep curves, one at base, the other in apical third. Setae *s cx* either thin or swollen basally4
Penis not distinctly S-shaped, with a short and strong curve at base and a much longer apical part only slightly curved. Setae *s cx* distinctly widened in basal half. *Omega 1* not swollen at apex.6
4. Setae *s cx* strongly widened in basal half, with 5 to 8 pairs of long pectinations. Apical third of penis angulated at 75-115° to its median third. Penis 15 to 16 long (measured in straight line).....5
Setae *s cx* narrow with 3 to 4 pairs of short pectinations. Apical third of penis angulated at 28-30° to the median part. Total length of penis 17-18 (measured in straight line). Setae *d2* 2.7 to 3 times longer than *d1*; *l2* 1.22 to 1.28 times longer than *d1*; *a3* 2.5 to 3 times longer than *a2*. *Omega 1* distinctly widened at apex. Distance *a+b* is 4.1 to 5.4 times longer than distance *c*.*T. curvipenis* n.sp.
5. Apical third of penis angulated at 75-80° to its median third. *Omega 1* cylindrical, with apex very slightly widened. Setae *d2* 2.5 to 3 times longer than *d1* and *l2*. Distance *a+b* 1.5 to 2 times longer than distance *c*.*T. putrescentiae* (Schrank, 1781)
Apical third of penis angulated at 110-155° to its median third. *Omega 1* distinctly swollen at apex. Setae *d2* 1.5 to 1.7 times longer than *d1*; *a3* 1.8 to 2.5 times longer than *a2*. Distance *a+b* 2.5 to 2.4 times longer than distance *c*.....
.....*T. javensis* (Oudemans 1916)

6. Setae *d2* a little less than 3 times as long as *d1* or *l2*.
Omega 1 cylindrical, shorter and wider. Setae *s cx*
 moderately widened in basal part and bearing 6
 pairs of thin and long pectinations.....
*T. savasi* Lynch, 1989
- Setae *d2* almost 2 times as long as *d1* or *l2*. *Omega 1*
 30% longer and slightly narrowing towards the
 apex. Setae *s cx* strongly widened in basal two-
 thirds and bearing 7 to 8 pairs of thick relatively
 short and blunt pectinations.....
*T. neiswanderi* Johnston & Bruce, 1965

ACKNOWLEDGEMENTS

We are very grateful to Dr P.J. van Helsing, of
 the Natural History Museum of Leiden, who kindly sent
 us typical specimens of the Oudemans Collection for
 our study.

REFERENCES

Fain, A. 1963. Les acariens producteurs de gale chez

les Lémuriens et les Singes, avec une étude sur les
 Psoroptidae (Sarcoptiformes). Bull. Inst. r. Sci.
 nat. Belg., 32: 1-125.

Griffiths, D.A. 1979. The morpho-species and its
 relationship to the biological species in the genus
Tyrophagus (Acaridae, Acarina). In "Recent ad-
 vances in Acarology, 1: 199-212, Rodriguez, J.G.
 (Ed.) New York, San Francisco and London,
 Academic Press".

Johnston, D.E. and W.A. Bruce. 1965. *Tyrophagus neis-
 wanderi*, a new acarid mite of Agricultural impor-
 tance. Res. Bull. Ohio agri. Exp. Stn., 977: 1-17.

Lynch, C.A. 1989. Two new species of the genus
Tyrophagus (Acari, Acaridae). J. Zool. Lond.,
 219: 545-567.

Oudemans, A.C. 1916. Myrmecophile Acari uit Salatiga.
 Ent. Ber. Amst., 4: 267.

Roberstson, Ph. L. 1959. A revision of the genus
Tyrophagus with a discussion on its taxonomic
 position in the Acarina. Aust. J. Zool., 7: 146-181.

Samsinak, K., 1962. Beiträge zur Kenntnis der Gattung
Tyrophagus Oud. Acta Soc. ent. Cechoslov., 59:
 266-280.
