

PLANT GENE EXPRESSION DURING EFFECTIVE AND INEFFECTIVE NODULE DEVELOPMENT OF THE TROPICAL STEM-NODULATED LEGUME SESBANIA ROSTRATA

P. de Lajudie<sup>(1)</sup> and T. Huquet  
Laboratoire de Biologie Moléculaire des Relations Plantes-Microorganismes, INRA-CNRS, BP 27, Auzeville, 31326 CASTANET-TOLOSAN CEDEX, FRANCE.  
(1) Permanent Address : Laboratoire de Biologie des Sols, ORSTOM, BP1386 DAKAR, SENEGAL.

*Sesbania rostrata* is a tropical legume which develops nitrogen-fixing nodules on both stems and roots when infected by a specific *Rhizobium* (Dreyfus and Dommergues, 1981). This fixation is very efficient (Dommergues *et al.*, 1985), and *Sesbania rostrata* has a real potential in agriculture as a green manure (Dreyfus *et al.*, 1985 ; Rinaudo and Moudionqui, 1986). In agreement with what is described in other nitrogen-fixing symbioses i.e. root-nodulated plants like *Glycine max* (Leacock and Verma, 1980), *Pisum sativum* (Bisseling *et al.*, 1983), *Phaseolus vulgaris* (Cullimore *et al.*, 1983) and *Medicago sativa* (Lang-Unnasch and Ausubel, 1985), we have found plant genes specifically activated in stem and root nodules of *Sesbania rostrata*.

We compared two-dimensional (2D) polyacrylamide gel electrophoresis patterns of *in vitro* translation products of poly A<sup>+</sup>-mRNA purified from uninfected roots and stems and from root and stem nodules induced by wild type *Rhizobium* sp. strain ORS571 (Dreyfus *et al.*, 1983). 200-300 polypeptides could routinely be distinguished in each pattern, their molecular weights ranging from 10 000 to more than 100 000 daltons. The figure shows the 2D-patterns of the different tissues. Most of the polypeptides are present in all tissues. However at least 30-40 polypeptides exhibit different intensities in stems, roots, stem nodules and root nodules, reflecting tissue-related plant gene expression. Among these we found, according to nomenclature proposed by Van Kammen (1984), at least 7 "nodulins" (see figure : spots 28, 26, Lb1, Lb2, Lb3, Lb4, Lb5) and 9 "nodule-stimulated polypeptides" (see figure : spots 66, 54, 53, 52, 51, 38, 37, 25, 22) common to both root and stem nodules. In addition, whilst 44 is a genuine "root nodulin" (since it is not present in uninfected roots), it is a "stem nodule-stimulated polypeptide" (since there are ~~been~~ ~~present~~ in uninfected stems). In the same way, 39 is a "stem nodulin"

4.  
SDS ↓

SDS ↓

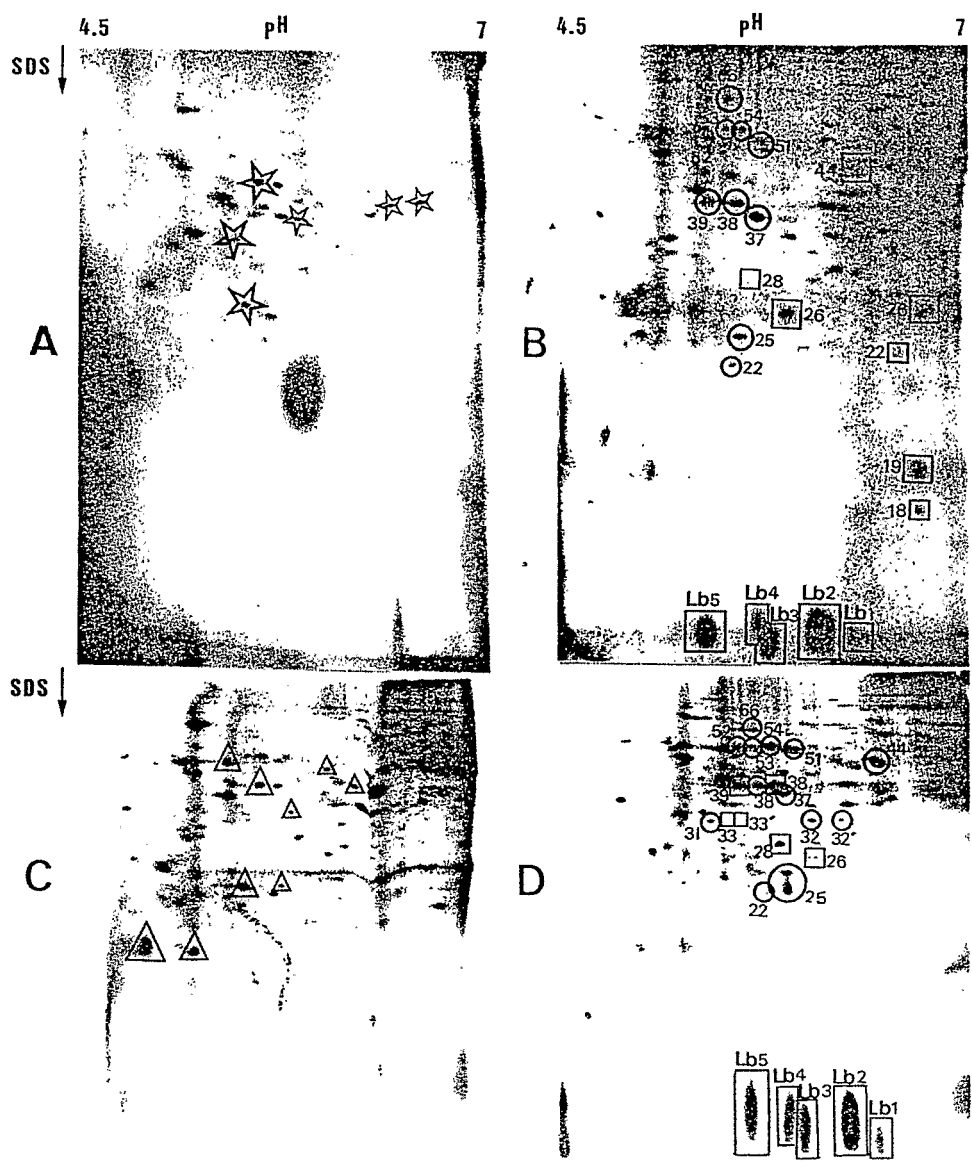
C

ODULE  
 ANISMES,  
 ANCE.  
 BP1386

n-fixing  
 izobium  
 merques  
 re as a  
 '86). In  
 ses i.e.  
 Pisum  
 83) and  
 t genes

phoresis  
 d from  
 by wild  
 peptides  
 weights  
 ws the  
 sent in  
 ities in  
 d plant  
 proposed  
 '6, Lb1,  
 : spots  
 ules. In  
 sent in  
 ere are  
 nodulin"  
 mparing  
 '3, 33')  
 her not  
 mparison  
 ich are

d from  
 in vitro  
 RNA  
 d, five  
 to the  
 were  
 their  
 re). In  
 b3 and



Differential plant gene expression in stem and root nodules compared to uninfected stems and roots. Fluorographs of two-dimensional polyacrylamide gel of *in vitro* translation products from poly A<sup>+</sup>-mRNA isolated from : (A) 15 days-old uninfected roots (B) effective root nodules induced by wild type *Rhizobium* sp. strain ORS571, 6 weeks after sowing (C) 15 days-old uninfected stems (D) 32 days-old effective stem nodules induced by wild type *Rhizobium* sp. strain ORS571. Numbers indicate the polypeptides approximate molecular weights (Kdal).  
 □ nodule-specific polypeptide      ○ nodule-stimulated polypeptide  
 ☆ root-stimulated polypeptide      △ stem-stimulated polypeptide

We studied plant gene expression during stem nodule development. Leghemoglobin components can first clearly be detected at day 12 after inoculation, concomitantly with the majority of the other nodule-stimulated polypeptides and their intensities increase throughout our observation period (32 days after stem inoculation). Moreover their relative intensities vary during the same period : at day 12, Lb2, Lb3, Lb5 have more or less the same intensities while Lb4 is major and Lb1 is not clearly visible ; after day 16, Lb2 and Lb5 become majoritary, Lb3 and Lb4 are moderately abundant and Lb1 appears but remains minority. Apart from leghemoglobin, other nodule-stimulated genes are activated at different stages of development : some are stimulated early, like 44 and 38, detectable at day 6, or 28 and 25 detectable at day 7. Some polypeptides reach their maximum intensity and then remain more or less at the same level : this is the case for 38, 28 (plateau reached at day 12), for 31 (plateau reached at day 14), and for 54, 53, 51, 39, 32 and 32' (maximum intensity from day 18). Some others are transiently activated : 44 is very intense during the first stages and then decreases gradually ; 33, 33', 25 and 22 reach their maximum expression between days 12-16, then decrease. All these observations indicate that plant genes are sequentially expressed during stem nodule development in *Sesbania rostrata* like in pea (Bisseling *et al.*, 1983) and soybean (Fuller and Verma, 1984).

We also analysed ineffective stem nodules induced by a *nif<sup>-</sup>* mutant *Rhizobium* sp. strain 5740 (Elmerich *et al.*, 1982). The resulting pattern is comparable with that of the effective stem nodules, except for the five leghemoglobin components which appear less abundant (data not shown). This indicates that in *S. rostrata*, like in other described systems (Fuller and Verma, 1984 ; Govers *et al.*, 1985 ; Lang-Unnasch and Ausubel, 1985), leghemoglobin genes are activated in ineffective nodules induced by *nif<sup>-</sup>* *Rhizobium* sp. mutants, but are expressed at a reduced level compared to efficient nodules.

#### Acknowledgements :

We are thankful to D. Bogusz, from O.R.S.T.O.M. Dakar, Sénégal, for sending us antiserum raised against leghemoglobin purified from *Sesbania rostrata* stem nodules.

#### References :

- Bisseling T., Been C., Klugkist J., Van Kammen A., Nadler K. 1983. *EMBO J.* **2**, 961-966.
- Cullimore J.V., Lara M., Lea P.J., Miflin B.J. 1983. *Planta* **157**, 245-253.
- Dommergues Y.R., Dreyfus B.L., Diem H.G., Duhoux E. 1985. *La Recherche* **16** (162), 22-31.
- Dreyfus B.L., Dommergues Y.R., 1981. *FEMS Microbiol. Lett.* **10**, 313-317.
- Dreyfus B.L., Elmerich C., Dommergues Y.R., 1983. *Appl. Envir. Microbiol.* **45**, 711-713.
- Dreyfus B.L., Rinaudo G., Dommergues Y.R. 1985. *MIRCEN Journal* **1**, 111-121.
- Elmerich C., Dreyfus B.L., Reyssset G., Aubert J.P. 1982. *EMBO J.* **1** (4), 499-503.
- Fuller F., Verma D.P.S. 1984. *Plant Mol. Biol.* **3**, 21-28.
- Govers F., Goudemans T., Moerman M., Van Kammen A., Bisseling T. 1985. *EMBO J.* **4** (4) 861-867.
- Lang-Unnasch N., Ausubel F.M. 1985. *Plant Physiol.* **77**, 833-839.
- Legocki R.P., Verma D.P.S. 1980. *Cell* **20** 153-163.
- Rinaudo G., Moudionqui A., 1986. *Bull. Rech. Agr. Gembloux - In Press.*
- Van Kammen A. 1984. *Plant Mol. Biol. Rep.* **2** (2) 43-45.

EXPI  
BY (Knu  
Dep  
DK-8Intr  
Sc  
from  
tran  
synt  
lism  
Schu  
In  
5'-n  
alla  
1975  
gena  
al.  
unit  
theAppe  
In  
dehy  
ment  
affe  
enzy  
comp  
xant  
nucl  
in F  
toin  
comp  
diff.Effe  
Liss  
In  
expr  
of B  
inc  
avai  
zyme  
Ou  
bot  
hour  
spe  
The