

Review

Goat Breeding: A Possible Sustainable Way to Manage Xerophytic Thickets in Southwestern Madagascar

Josoa R. Randriamalala ^{1,*}  and Dominique Hervé ²

¹ Ecole Supérieure des Sciences Agronomiques, Université d'Antananarivo, BP 175, Antananarivo 101, Madagascar

² Institut de Recherche pour le Développement, SENS (IRD, CIRAD, Université Paul Valéry), 911 Avenue Agropolis, 34394 Montpellier, France; dominique.herve@ird.fr

* Correspondence: rramarolanana@yahoo.fr; Tel.: +261-(0)-33-14-441-32

Abstract: Spiny thickets or xerophytic thickets (XTs) are a type of shrubby vegetation found in the far south and southwest of Madagascar, the driest parts of the island. This type of vegetation, which is rich in endemic animal and plant species, is endangered. Extensive local goat breeding (*Capra hircus*, for meat and milk production) based on XT browsing is an important source of household income. The aim of this paper is to analyse the possibility of using improved goat breeding as an alternative to wood charcoal (WC) production and slash-and-burn agriculture (SBA), which are unsustainable activities. The literature on (i) the impacts of SBA, WC production, and goat browsing on the XT ecosystem and (ii) the income provided by these three activities is reviewed to determine the sustainability level of improved goat husbandry. SBA and WC production reduced XT biomass and XT cover area, while goat browsing alone, at a stocking rate of one head per hectare, did not affect XT leaf biomass production and shrub regeneration. Furthermore, batch breeding and flushing techniques provided the highest annual income, mainly from the sale of surplus animal products. This improved goat husbandry may be a sustainable alternative to WC production. However, increasing the current stocking rate is necessary to surpass the combined income of WC production and SBA. An estimation of the XT carrying capacity would offer a basis to assess whether this ecosystem would support a higher stocking rate.

Keywords: arid; deforestation; goat husbandry; Madagascar; rangeland; sustainability; slash-and-burn-agriculture; wood charcoal



Citation: Randriamalala, J.R.; Hervé, D. Goat Breeding: A Possible Sustainable Way to Manage Xerophytic Thickets in Southwestern Madagascar. *Land* **2022**, *11*, 405. <https://doi.org/10.3390/land11030405>

Academic Editors: Didier Genin and Panayiotis G. Dimitrakopoulos

Received: 31 January 2022

Accepted: 5 March 2022

Published: 10 March 2022

Publisher's Note: MDPI stays neutral with regard to jurisdictional claims in published maps and institutional affiliations.



Copyright: © 2022 by the authors. Licensee MDPI, Basel, Switzerland. This article is an open access article distributed under the terms and conditions of the Creative Commons Attribution (CC BY) license (<https://creativecommons.org/licenses/by/4.0/>).

1. Introduction

Spiny thickets or xerophytic thickets (XTs) are a type of natural shrubby vegetation dominated by *Didiereaceae* and *Euphorbiaceae* [1] that occupies the littoral part of the southwest and the far south of Madagascar (Figure 1). Xerophytic thickets are a type of vegetation with a high endemism rate [2] and provide a multifunctional space and such goods and services as arable land [3,4], food and medicinal plants [5,6], goat rangeland [7–9], and timber and fuelwood (wood charcoal and firewood [6,10,11]). Similar to dry forests, XTs are currently undergoing significant deforestation (annual forest loss > 1%; [3,4]). Slash-and-burn agriculture (SBA) is the main cause of this deforestation [3,12], while wood charcoal (WC) production and to a lesser extent goat browsing are the main causes of XT degradation [11,13,14]. A search for sustainable alternatives to these unsustainable practices is necessary to stem this XT degradation/deforestation.

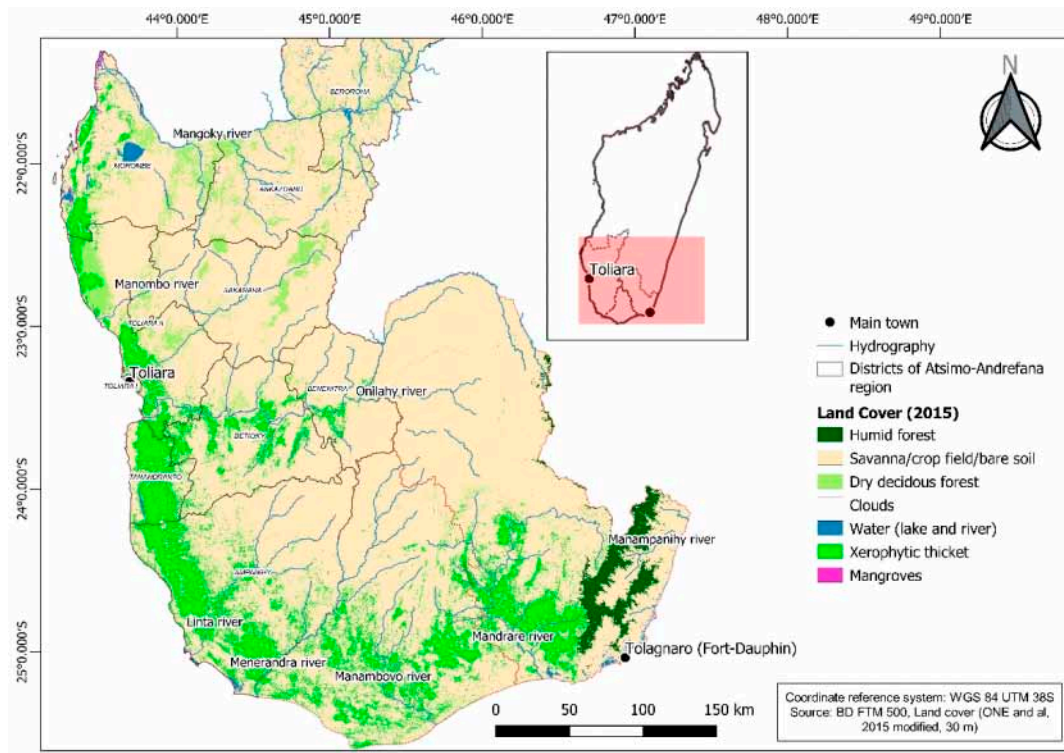


Figure 1. Southwestern Madagascar (the Atsimo-Andrefana region) and xerophytic thicket locations.

The development of rainfed agriculture would not be sufficient to reduce the dependence of households on forest resources, as the semi-arid character of the climate in southwestern Madagascar limits agricultural yields [15], while extensive local goat breeding (*Capra hircus*) is less impacted by rainfall variability [16,17]. As in other semi-arid areas, this extensive goat breeding has increased the livelihood resilience of populations living in and around the XT to these climate risks [17]. However, goat breeding has a poor reputation in environmental terms. At the international level, many research papers show that intensive goat browsing reduces vegetation cover [18–22] and inhibits the regeneration of fodder species [23,24]. Goat browsing can also reduce biomass production and plant diversity [21,25,26]. However, when the stocking density is moderate, goat browsing can stimulate shrub shoot growth [27] and twig biomass production [26]. Furthermore, under moderate stocking conditions, goats can enhance seed dispersal in semi-arid ecosystems [28,29]. In addition, alternative forms of pasture management, such as the incorporation of planned rest periods (the opposite of continuous browsing), may reduce the negative effects of browsing on rangeland and increase plant cover [30].

This paper analyses, by a regional meta-review of the literature, the possibility of promoting goat breeding practices that could have a low environmental impact on the natural ecosystem and be economically viable for the livelihoods of local populations as an alternative to unsustainable activities such as WC production and SBA, which degrade and reduce the XT cover in southwestern Madagascar. The status of Malagasy XTs and their goat rangeland function are first addressed. Then, the impacts of the main activities of local populations (SBA, WC production, and goat browsing) on XTs are analysed. Next, the current goat breeding practices and their possible improvement are discussed. Finally, recommendations on reconciling economically viable goat breeding with sustainable XT management are proposed and discussed.

2. Methods

A bibliographical survey on Malagasy XTs was conducted for the purposes of this study. The research areas concerned (i) Malagasy XTs, (ii) the deforestation of Malagasy XTs, (iii) the degradation of Malagasy XTs, and (iv) goat breeding in and around XT

vegetation. References related to these topics were obtained using Google and Google Scholar search engines. The aim of this bibliographical survey was to simultaneously review the current state of knowledge on (i) the functioning of the XT ecosystem (in terms of diversity, structure, and natural regeneration), (ii) the effects of human practices on the XT ecosystem (SBA, WC production, and goat breeding), (iii) the impacts of goat breeding practices on XT vegetation, and (iv) farmers' income from these three activities. The data concerning farm income from these three activities (SBA, WC production, and improved goat husbandry) are comparable because they concern the same periods (the 2010s and the 2020s), the same area (southwestern Madagascar with the same climate and vegetation), and the same farmers (farmers belonging to the Mahafaly and Tanalana ethnic groups).

3. Status of Malagasy XTs

Malagasy XTs are found in the southwest and the far south of Madagascar (Figures 1 and 2a). These areas have a semi-arid climate with mean annual rainfall that ranges from 300 to 800 mm, ≥ 9 dry months annually, and a water deficit > 400 mm [2,31]. XTs are restricted to an altitude below 400 m and cover approximately 17,000 km² (Figure 1; [32]). XT tree and shrub species show adaptations to drought, such as microphyllous (a reduction in the size of leaves) or aphyllous forms (a reduction in the number or a complete lack of leaves), spinescence (the development of thorns on branches instead of leaves), and pachycauly (swelling of the trunk, which allows water to be stored more efficiently) [2,33].



Figure 2. Xerophytic thicket (XT) landscape: (a) global view; (b) XTs after slash-and-burn agriculture; (c) a former wood charcoal kiln; (d) a goat herd.

Malagasy XTs lie essentially on two main soil types: calcisol (rocky calcareous soil) and lixisol (yellow/red sand soil), both of which are shallow and poor in organic matter and nitrogen [7,34]. In southwestern Madagascar, from the coastal zone to the inland area (from west to east), there are two main types of XT [2,35]:

- Short shrubby XT (Figure 2a), dominated by *Euphorbia* spp. (mainly *E. stenoclada* and *E. laro*) not exceeding 4 m in height, represents the most xeric formation. The only

Didiereaceae species occurring in this kind of XT are *Alluaudia comosa* and *Alluaudia filherenensis*; and

- Tall XT with *Didierea madagascariensis*, *Adansonia fony*, and *Commiphora lamii* associated with an average height of 4–6 m and emergent trees reaching 8–10 m.

Malagasy XTs have a high percentage of plant endemism [36,37]: 48% of recorded genera and 95% of recorded species are endemic to Madagascar. For example, the *Didiereaceae* family has 11 species, of which 6 are endemic to Madagascar [33].

An expansion in cropland and further fragmentation of the remaining XTs are expected in the next three to four decades if no improvement is made in the livelihoods of households living in and around XTs, including food self-sufficiency [38]. Brinkmann et al. [3] demonstrated on the Mahafaly Plateau that SBA is mainly practised in remote areas far away from roads and markets. Randriamalala et al. [4] showed that SBA is more widely practised in the wetter, eastern part of the XT.

4. Xerophytic Thickets as Wooded Goat Rangeland

Malagasy XTs are browsed by goats (Figure 2d) [7,9]. Goat breeding in southwestern Madagascar is extensive and depends mainly on the availability of fodder in XTs [8,9,39,40]. Goats are bred for meat and milk production. The diet of goats consists mainly of the leaves of approximately 100 shrub species [9,39,40]. A partial list of these species is presented in Appendix A in terms of fitness for wood charcoal production and goat palatability estimated by the frequency of goat visits during one dry and one rainy season [40]. The diet of goats in the dry season consists of green leaves within their reach [39,40] or leaves, flowers, and fruits that have fallen to the ground from fodder shrubs. In the rainy season, the proportion of herbaceous species in the diet of goats increases but remains small (<35% of the daily feeding time; [9]). In addition to natural fodder, agricultural residues such as maize bran, cassava husks, and spoiled seeds and pods also contribute to the diet of goats [39]. They are available at the end of the rainy season, during the harvest period, and their consumption is limited in terms of quantity. The low use of feed supplements makes daily browsing times longer (10–13 h/day) [8,40]. The use of feed supplements may explain the relatively short browsing time (8–10 h/day) in other semi-arid areas (Senegal [41] and Oman [42]), as goats return to the pen earlier to receive feed supplements from crop residues. Goat herds in southwestern Madagascar may travel 7–15 km/day in the rangeland in search of food but do not stray more than 6 km from their night enclosure [8,40].

Studies on the impact of goat browsing on rangeland vegetation are scarce in Madagascar [7,13]. Ratovonamana et al. [13] showed that the combination of cattle and goat browsing of XTs in the littoral zone of southwestern Madagascar contributes to a reduction in the species richness. In contrast, Randriamalala et al. [7] showed that goat browsing alone has a slight effect on XT ecosystems. The species richness, regeneration rate, and leaf biomass (≤ 3 cm in diameter) of southwestern XTs were found to not vary significantly with goat browsing intensity in a comparison between a grazed site with a stocking rate of one head per hectare and a site too far away to be grazed that had not been cleared for SBA or for WC production [7]. This discrepancy may stem from the fact that the sites studied by Ratovonamana et al. [13] may have been affected by other practices, such as WC production and SBA. The western XTs in the littoral part of southwestern Madagascar are former charcoal production sites (charcoal production at these sites ceased in the early 2000s due to the depletion of wood resources) [39,43]. Thus, it is reasonable to assume that the effects of goat browsing on XTs are slight at the current stocking rate of one head per hectare.

5. Main Causes of XT Deforestation and Degradation

5.1. Slash-and-Burn Agriculture, the Main Cause of Deforestation in XTs

Post-SBA recovery in dense humid forests [44–47] and in dense dry forests [48–50] is fairly well documented in Madagascar. In contrast, studies on post-SBA recovery of XTs are scarce [35,51]. The species richness and floristic composition of post-SBA XTs vary

significantly between soil types: XTs on calcisol are richer in species than XTs on lixisol. The species composition and richness of overstory XTs (>1.3 m in height) have not changed since the farmers abandoned the plots. However, structural parameters such as total height, basal area, and mean diameter at breast height have increased significantly since plot abandonment, irrespective of the soil type. The slowness of the growth of shrub species found in post-cultivation XT plots may explain this lack of a change in the diversity and floristic composition through secondary succession stages [52]. For example, for nine XT species, it would take between 30 and 130 years to reach a diameter at breast height of 10 cm and over 100 years to reach a diameter of 30 cm [52].

5.2. Wood Charcoal Production, a Major Source of XT Degradation

All of the WC supplying the town of Toliara, the main city in southwestern Madagascar, comes from the XTs and the dense dry forests of southwestern Madagascar [11,14,53]. Approximately 43,000 t of WC are consumed annually by the town of Toliara [54], which is equivalent to an annual wood loss of over 340,000 t based on a carbonization yield of 0.125 [55]. The fuelwood market generally ensures the subsistence of poor households and is an important source of income during the dry season [43,56–58]. The semi-arid climate of southwestern Madagascar is characterized by a succession of drier and wetter periods, both of which last from 3 to 7 years [58]. Crop harvests are particularly poor during drier periods when WC production activities intensify [17]. All households produce WC over a period of 1 to 12 months, depending on their wealth [43,56]. Wood charcoal production is also a gap-filler during the agricultural off-season and a relatively rapid way to generate cash at short notice [57]. Wealthier households with more livestock (zebus and goats) engage in this activity for a shorter period (<3 months) and at the end of the dry season around October–November [43].

Wood charcoal production involves a significant loss of wood biomass, which is therefore less available in the vicinity of villages/settlements [7,10]. This biomass scarcity has led to the exploitation of tamarind trees for charcoal wood, despite their important cultural value [59]. Wood charcoal production is not a sustainable activity and would lead to the extinction of hardwood species suitable for making WC at current production sites in less than half a century [11]. Although there are numerous WC species in the XT (a partial list is given in Appendix A) [10,11], their extinction as a result of overexploitation of mature individuals may indeed occur. Changes in the main WC production sites around the town of Toliara confirm this lack of sustainability [54]. The search for sustainability in the exploitation of XTs, mainly for the purpose of WC commercialization, is difficult because of their low productivity with respect to woody biomass. Reducing the pressure on this vegetation type by planting fast-growing exotic species, such as *Eucalyptus* spp. and *Acacia* spp., at the wetter sites to the north and/or east of the XTs may be suggested as a way to preserve them [11,54,56]. Similarly, the planting of exotic multi-use species, such as *Ziziphus* spp. (fodder and charcoal), at sites close to the villages around the XTs may also be recommended to reduce the pressure on these thickets [11,39].

6. Goat Breeding: An Alternative to Wood Charcoal Production and Slash-and-Burn Agriculture in XTs

Goat breeding in southwestern Madagascar is extensive and suffers from low production rates due mainly to (i) long inter-gestation periods [60] and (ii) the high rate of mortality of kids reported by farmers [39,61]. Despite these limitations, goat breeding is an important source of income for farmers [17,43]. Indeed, goat sales constitute more than 50% of the annual household cash income in the commune of Soalara-Sud [43] and cover 15–29% of the net food expenditure on the entire Mahafaly Plateau (compared with less than 6% for food crops; [17]). However, the key question regarding improvements to goat breeding practices is: would this income incentive be sufficient to persuade the farmer to breed goats rather than to cultivate the land or to produce WC? Improved husbandry practices can indeed significantly increase the production of livestock and thus the income obtained from

it. However, this improvement must be simple and not involve many changes in current pastoral/breeding practices. The batch breeding technique satisfies these conditions. It consists of dividing the herd into the following batches: (i) young and lactating females; (ii) adults (reproductive animals); and (iii) castrated males and culled adults. The animals from the last batch and the surplus animals from the second batch are intended for sale. The application of this breeding method involves oestrus synchronization to obtain homogeneous batches of animals and to improve the reproductive performance of the goats. Flushing, which is known to have positive effects on small ruminant reproduction [62,63], is a simple technique used to achieve this oestrus synchronization. Andrianarisoa et al. [61] conducted farm trials in southwestern Madagascar on the control of goat reproduction using the flushing technique. The treatment consisted of feeding young females dry cassava at a rate of 500 g/day/individual for 45 days in June–July, a period of calving, and the availability of a small amount of fodder in the rangeland [61]. Cassava is available locally, and dry cassava can be purchased at local markets at a low cost. The aim is to change the birth period from the dry season to the short rainy season when shrubs have leaves.

Flushing significantly improves several parameters of goat reproduction [61], including the fertility rate (the ratio of the number of females giving birth to the number of bred females), the fecundity rate (the number of kids born in relation to the number of bred females), and the survival rate at one month from birth (the ratio of the number of kids alive at one month to the number of kids born alive). Thus, the use of this oestrus synchronization technique would enable 1.5 (3 parturitions/2 years) to 2 parturitions per year instead of 1 (goats in southwestern Madagascar give birth every 12.4 months on average; [61]) in addition to producing homogeneous batches of animals. Batch breeding expenses were related to the purchase of feed supplements for the dry period (dried cassava; USD 2.90/head/year) and deworming products (USD 0.15/head) to ensure the comparability of treated and control goat groups [61]. All of these products are locally available. The potential income from the sale of surplus produced animals increases as the number of bred females increases (Figure 3). The challenge is to manage both the increase in income from goat breeding and the number of young females, which is limited by the XT carrying capacity.



Figure 3. Potential benefit from the simultaneous application of the flushing and batch breeding techniques [61]. The black triangle and black diamond denote the minimum numbers of female goats required to replace the income from wood charcoal production (15 and 21 goats, respectively); the white triangle and white diamond denote the minimum numbers of female goats required to replace the income from wood charcoal production and slash-and-burn agriculture (54 and 72 goats, respectively).

The data on income from SBA are from Neudert et al. [64], who estimated the opportunity costs of conserving Malagasy XTs (Table 1). The income associated with SBA is equivalent to the estimated opportunity cost of giving up that activity. The data on income

from WC production are from Neudert et al. [64] and Masezamana et al. [56], who studied the value of the WC production chain in southwestern Madagascar (Table 1).

Table 1. Income from slash-and-burn agriculture [64,65].

N	Parameters	Amount (USD)
I	Net income (USD/ha/year) [61]	177.4
II	Mean crop field area [62]	2.1
III	Profit from SBA (USD/ha/year) (=I × II)	372.54

A simple linear regression from the data of Andrianarisoa et al. [61] (Figure 3) was used to estimate the minimum number of female goats necessary to obtain the calculated income from SBA and WC production according to data from [56,64,65] (Tables 1 and 2). The mean annual income from SBA and WC production together, as a net of different production costs, is about USD 521 (=372 + 149; Tables 1 and 2). Thus, between 15 (2 parturitions/year) and 21 (3 parturitions/2 years) female goats would have to be bred to produce the equivalent annual income to WC production. However, between 54 (2 parturitions/year) and 72 (3 parturitions/2 years) female goats would have to be bred to produce the equivalent annual income to that from SBA and WC production. This is twice or three times the average small ruminant herd size estimated by Neudert et al. [65] on the Mahafaly Plateau, which is 25 heads per farm. Thus, it is possible to increase the income obtained from goat breeding, which could replace the income from WC production and a large part of the income from SBA agriculture, but this would have to start with increasing the average herd size (from 25 to 54–72 head). These new increased herd sizes might lead to a doubling or tripling of the stocking rate in the XTs, which would entail ecological risks, and the increased income would be subject to socio-economic risks related to market and price instability, which are discussed below.

Table 2. Income from wood charcoal production [53,61].

N	Parameters	Locations	
		XT North of Onilahy River ^(a)	XT South of Onilahy River ^(b)
I	WC producer sample size (household) [56]	120	113
II	Annual duration of WC production (months) [56]	8.85	6
III	Monthly WC production (kg) [56]	1400	759
IV	Annual WC production (kg/year) (=II × III)	12,390	4554
V	Mean weight of a WC bag (kg) [64]	23	23
VI	WC bag number (=IV/V)	538.70	198
VII	Price/bag (USD) [64]	0.4	0.4
VIII	Annual income/household from WC production (USD) (=VI × VII)	215.48	79.2
IX	Average annual income from WC production (USD) (=[VIII ^(a) × I ^(a)] + [VIII ^(b) × I ^(b)]) / (I ^(a) + I ^(b))	149.37	

7. Recommendations for Sustainable Goat Breeding

7.1. Fodder Availability and Rangeland Management

The application of the batch breeding technique combined with flushing as an oestrus synchronization method would significantly increase the size of the goat herds in southwestern Madagascar in a short period of time (a doubling or tripling of the size in less

than 5 years). This situation may lead to overgrazing and the negative effects this could have on wooded rangeland, such as a reduction in plant cover [20–22] and a disruption in the regeneration of fodder species [23,24]. An assessment of the XT carrying capacity for goats—the maximum population size that it can support indefinitely [66]—is necessary. An accurate assessment of the carrying capacities of existing rangelands and simulations of the effects of the adoption of flushing and batch husbandry on goat herd size should be carried out. The negative effects of goat browsing on vegetation in semi-arid areas are mainly a consequence of an animal stocking rate that is too high [29]. The carrying capacity of a rangeland is a function of (i) its annual fodder biomass production, (ii) the daily amount of fodder ingested by the ruminants, and (iii) the annual browsing duration. This assessment of the carrying capacity of the XT, which is a dry wooded rangeland that has spiny vegetation rather than leaves during the long dry period, presents methodological challenges. Carrying capacity assessments have generally concerned herbaceous fodder in rangeland [67–70]. The contribution of shrubs to the availability of forage in wooded rangelands is recognized [71–74]. In contrast, the annual fodder biomass production of shrubs has often been assessed at experimental sites [75,76] and rarely in rangeland [77]. The annual increase in fodder biomass is part of the net primary productivity of the ecosystem and is more difficult to estimate for shrubby fodder species. It may be estimated by the ratio between the shrub fodder biomass and its age. This latter element can be equated to the number of annual growth rings [11,52].

There are two possible scenarios: (i) the XT carrying capacity is well above the higher stocking rate corresponding to an average herd size of 54–72 heads/farm; or (ii) the current stocking rate of 1 head/ha is close to the XT carrying capacity. In the first case, the improvement of goat husbandry proposed in this work is ecologically sustainable since the increase in the goat herd size would not correspond to a degradation of the XT (no significant effect on the natural regeneration of fodder species or on the availability of fodder biomass). In the second case, the proposed improvement of goat husbandry would lead to XT over-browsing and to degradation. In the latter case, it would be recommended to maintain the current stocking rate. In this case, goat breeding would remain an important livelihood component but would not constitute a sustainable alternative to the combination of WC production and SBA; it could only supplement the income from WC production.

In all cases, increasing the availability of fodder by planting fodder species would be recommended. However, this would only produce significant results in several years (>10 years) because of the aridity of the climate, which slows down the growth of shrubs [11,52] and also reduces the survival rate of seedlings [11,51]. Better knowledge of the ecology (distribution, growth, and limiting factors) and biology (natural regeneration and optimal multiplication techniques) of shrubby species in XTs is essential for successful planting of fodder species. Furthermore, planting at the beginning of the rainy season and regular monitoring of the seedlings would significantly increase the survival rate of the planted seedlings. Native fodder species adapted to the local arid climate should be prioritized to minimize the risk of invasion of XTs by exotic species. Indeed, native species could be planted in gaps and post-SBA regrowth areas, while exotic species such, as *Ziziphus* spp., could be planted in courtyards and around crop fields near villages.

7.2. Necessary Reorganization of the Goat Value Chain

An increase in the herd size, which is easy to achieve [61], offers an opportunity to increase the farm's income if the market is organized in such a way as to clearly identify a demand for goat meat and if the price of this product is stable. At the moment, the goat value chain is not properly organized. Purchases are made directly from the farmer or at the marketplace in each rural commune. Goat sales are made on the basis of pressing need and are not planned [17]. These factors make it difficult for goat traders to acquire a large number of animals in a short period of time. Another limitation is the difficulty of selling surplus animals as assets to be made profitable when goat herds are in fact perceived as savings that can be mobilized in case of need (e.g., illness, traditions related to marriage and

burial, a loss of crops [17,43]) and not as assets to be made profitable. To avoid these pitfalls, the goat value chain should be reorganized. First, goat farmers should form associations or cooperatives to provide them with technical (awareness of and training on how to breed in batches and herd and rangeland management) and organizational (financial and administrative management) support. Such activities depend on development policies, which are the responsibility of the State with the help of development NGOs. Then, they should promote the establishment of links to other stakeholders in the goat value chain (butchers, live animal traders, meat or live animal exporters, etc.). These other stakeholders could also be encouraged to assist the State and development NGOs in providing technical and organizational support to goat farmers in order to ensure the sustainability of goat meat or live animal supplies.

Goat farming in southwestern Madagascar can be sustainable and would be a factor in the development of this region if the sale of the surplus animals produced could be guaranteed. The conditions to ensure the sale of surplus animals produced can be satisfied in Madagascar because: (1) there is a demand for meat to partially replace zebu meat, which has become deficient [78]; (2) there is a demand for live animals for exports to the Saudi Arabian or Persian Gulf markets; (3) there is a demand for goat meat for Muslim countries instead of the more highly valued mutton for the end of Ramadan; (4) the price can be sustained as long as supply remains below demand at the regional level; and, in the case of the export sector, (5) livestock farming will remain in competition with the farming of dry grains or charcoal production for small-scale livestock farmers who do not have the capacity to increase the size of their herd sufficiently. It is advisable to develop local sales first, as they imply minimal restrictive standards and modest logistical means (in terms of homogeneity of animal batches, hygiene, animal welfare, labelling, the refrigeration chain, etc.). Then, exports to countries with requirements and standards that are more accessible to breeders in southwestern Madagascar can be targeted (Comoros and China).

8. Conclusions

The application of the batch breeding technique and flushing to improve goat reproductive parameters and stimulate oestrus synchronization may be a viable and sustainable alternative to WC production practices in the XT. On the other hand, an increase in the herd size and thus in the stocking rate is necessary in order for improved goat breeding to cover the combined income from WC production and SBA. The effects of such an increase in the stocking rate on the XT ecosystems would depend on their carrying capacity. In all cases, improvements in the reproductive parameters of goats make it possible to produce surplus animals that can be sold and thus increase the income of the farmers. However, it is essential to ensure the sale of surplus animals resulting from improvements in animal husbandry to avoid an excessive increase in the size of the herd. An improvement in the organization of the farmers is necessary, involving the formation of associations and/or cooperatives and training in herd and administrative management, and of the entire goat value chain associating producers with the other stakeholders in the sector in order to facilitate the sale of surplus animals produced. Finally, to ensure the sustainability of goat breeding, an assessment of goat–rangeland interactions with regard to carrying capacity is needed.

Author Contributions: Conceptualization and writing—original draft preparation, J.R.R.; writing—review and editing, J.R.R. and D.H. All authors have read and agreed to the published version of the manuscript.

Funding: This research received no external funding.

Institutional Review Board Statement: Not applicable.

Informed Consent Statement: Not applicable.

Data Availability Statement: Not applicable.

Conflicts of Interest: The authors declare no conflict of interest.

Appendix A

Table A1. Main shrubby fodder species in the XT based on data from [7,40]. Palatability from the frequency of goat visits [42]: +++ Very high; ++ high; + mean; 0 Low.

Species	Family	Vernacular Name	Edible Part	Species Fit for Wood Charcoal Production	Palatability
<i>Acacia bellula</i>	Fabaceae	Rohinala	Leaf	Yes	0
<i>Albizia tulearensis</i>	Fabaceae	Fengodiba	Leaf; fruit; flower	No	+
<i>Allophylus decaryi</i>	Sapindaceae	Sarivoamanga	Leaf	No	0
<i>Allophylus dissectus</i>	Sapindaceae	Sarivoamanga2	Leaf	No	0
<i>Bauhinia grandidieri</i>	Fabaceae	Seta	Leaf	Yes	0
<i>Boscia longifolia</i>	Capparaceae	Paky	leaf	No	0
<i>Cayratia triternata</i>	Vitaceae	Tehezandrakra	Leaf	No	0
<i>Cedrelopsis grevei</i>	Meliaceae	Katrafay dobo	Leaf	Yes	0
<i>Celosia argentea</i>	Amaranthaceae	Fofotse	Leaf	No	+
<i>Chadsia flammea</i>	Fabaceae	Sangan'akoholahy	Leaf	Yes	+++
<i>Chadsia sp.</i>	Fabaceae	Rohidroitse	Leaf	Yes	+
<i>Combretum grandidieri</i>	Combretaceae	Kapikala	Leaf; fruit; flower	No	0
<i>Commiphora lamii</i>	Burseraceae	Ariarinalotse	Leaf	No	+
<i>Commiphora lasiodisca</i>	Burseraceae	Vingovingo	Leaf	No	+
<i>Commiphora marchandii</i>	Burseraceae	Holidaro	Leaf	No	++
<i>Commiphora simplicifolia</i>	Burseraceae	Sengatse	Leaf	No	++
<i>Croton sp.</i>	Euphorbiaceae	Saribalahazo	Leaf	No	0
<i>Cynanchum spp.</i>	Apocynaceae	Try	Leaf	No	0
<i>Dalbergia xerophila</i>	Fabaceae	Hazobango	Leaf	Yes	+
<i>Dichrostachys alluaudiana</i>	Fabaceae	Havo	leaf	Yes	++
<i>Dicoma incana</i>	Asteraceae	Vongo	Leaf	No	+++
<i>Didraeopetalum mahafaliense</i>	Fabaceae	Lovainafy	Leaf	Yes	0
<i>Didierea madagascariensis</i>	Didiereaceae	Sono	Leaf	Yes	++
<i>Digoniopterys microphylla</i>	Malpighiaceae	Kitoky	Leaf	No	0
<i>Digoniopterys microphylla</i>	Malpighiaceae	Vongo2	Leaf	No	+++
<i>Diospyros latispathulata</i>	Ebenaceae	Sasimotse2	Leaf	Yes	+++
<i>Diospyros manampetsae</i>	Ebenaceae	Fivikakanga	Leaf; fruit; flower	No	0
<i>Euphorbia fiherenensis</i>	Euphorbiaceae	Samantambazaha	Leaf	No	0
<i>Euphorbia laro</i>	Euphorbiaceae	Laro	Leaf	No	0
<i>Euphorbia stenoclada</i>	Euphorbiaceae	Samanta	Leaf	No	0
<i>Givotia madagascariensis</i>	Euphorbiaceae	Farahafatse	Fruit	No	0
<i>Gouania mauritiana</i>	Rhamnaceae	Timbatse	Leaf	No	++
<i>Grewia leucophylla</i>	Malvaceae	Sely	Leaf	Yes	++
<i>Grewia tulearensis</i>	Malvaceae	Hazofotse	Leaf	Yes	+
<i>Gyrocarpus americanus</i>	Hernandiaceae	Kapaipoty	Leaf; fruit; flower	No	++
<i>Helinus ovatus</i>	Rhamnaceae	Masokarany	Leaf	No	+
<i>Hilsenbergia croatii</i>	Boraginaceae	Lampana	Leaf	Yes	0
<i>Hilsenbergia lyciacea</i>	Boraginaceae	Mera	Leaf	Yes	0
<i>Ipomoea bolusiana</i>	Convolvulaceae	Moky	Leaf	No	+
<i>Ipomoea sp.</i>	Convolvulaceae	Velahy	Leaf	No	0
<i>Kalanchoe beharensis</i>	Crassulaceae	Mozy	Leaf	No	+
<i>Karomia microphylla</i>	Lamiaceae	Forim-bitike	Leaf	Yes	++
<i>Maerua filiformis</i>	Capparaceae	Somangy	Leaf	Yes	+
<i>Mimosa delicatula</i>	Fabaceae	Rohy	Leaf	Yes	+++
<i>Neobegonia leandriana</i>	Meliaceae	Handinaombilahy	Leaf	Yes	+
<i>Neobegonia mahafaliensis</i>	Meliaceae	Handy	Leaf	Yes	+
<i>Operculicarya decaryi</i>	Anacardiaceae	Jabia	Leaf; fruit; flower	No	0

Table A1. Cont.

Species	Family	Vernacular Name	Edible Part	Species Fit for Wood Charcoal Production	Palatability
<i>Operculicarya</i> sp.	Anacardiaceae	Tarabia	Leaf	No	+++
<i>Paederia grandidieri</i>	Rubiaceae	Tamboromantsy	Leaf	No	0
<i>Poupartia silvatica</i>	Anacardiaceae	Sakoa	Leaf; fruit; flower	No	0
<i>Pristimera bojeri</i>	Celastraceae	Timbatse2	Leaf	No	++
<i>Rhigozum madagascariense</i>	Bignoniaceae	Hazotaha	Leaf	Yes	+++
<i>Ruellia latispala</i>	Acanthaceae	Fobo-drano	Leaf	No	0
<i>Ruellia</i> sp.	Acanthaceae	Tseatsea	Leaf	No	0
<i>Salvadora angustifolia</i>	Salvadoraceae	Sasavy	Leaf; fruit; flower	Yes	++
<i>Salvadora angustifolia</i>	Salvadoraceae	Sasimotse	Leaf	No	+++
<i>Sclerocarya birrea</i>	Anacardiaceae	Handimbohitse	Leaf	Yes	+
<i>Secamone</i> sp.	Apocynaceae	Hazomby	Leaf	Yes	0
<i>Solanum bumeliaefolium</i>	Solanaceae	Hazonosy	Leaf	Yes	+++
<i>Stereospermum euphorioides</i>	Bignoniaceae	Fanony	Leaf	No	++
<i>Stereospermum euphorioides</i>	Bignoniaceae	Somontsoy	Leaf	Yes	+
<i>Suregada boiviniana</i>	Euphorbiaceae	Hazom-balala	Leaf	Yes	0
<i>Talinella boiviniana</i>	Talinaceae	Tsiroraha	Leaf	No	+++
<i>Talinella dauphinensis</i>	Talinaceae	Koamanga	Leaf	No	0
<i>Tarenna</i> sp.	Rubiaceae	Lelaomby	Leaf; fruit; flower	Yes	0
<i>Terminalia fatraea</i>	Combretaceae	Talia	Leaf	Yes	0
<i>Terminalia ulexoides</i>	Combretaceae	Fatra	Leaf; fruit	Yes	0
<i>Tetrapterocarpon geayi</i>	Fabaceae	Fengoke	Leaf; fruit; flower	No	+
<i>Tetrapterocarpon geayi</i>	Fabaceae	Voavovy	Leaf	Yes	++
<i>Thilachium seyrigii</i>	Capparaceae	Pakambo	Leaf	Yes	0
<i>Vaughania interrupta</i>	Fabaceae	Falimaharay	Leaf	Yes	+
<i>Xerosicyos danguyi</i>	Cucurbitaceae	Tapisaky	Leaf	No	0
<i>Ziziphus spina-christi</i>	Rhamnaceae	Tsinefo	Leaf; fruit	Yes	+++

References

- Koechlin, J.; Guillaumet, J.L.; Morat, P. *Flore et Végétation de Madagascar*; A.R.G. Gantner Verlag: Vaduz, Liechtenstein, 1997.
- Cornet, A.; Guillaumet, J.L. Divisions floristiques et étages de végétation à Madagascar. *Cah. ORSTOM. Sér. Biol.* **1976**, *11*, 35–42.
- Brinkmann, K.; Noromiarilanto, F.; Ratovonamana, R.Y.; Buerkert, A. Deforestation processes in South-Western Madagascar over the past 40 years: What can we learn from settlement characteristics? *Agric. Ecosyst. Environ.* **2014**, *195*, 231–243. [[CrossRef](#)]
- Randriamalala, J.R.; Hosnah, B.H.; Ranaivoarimanana, S.; Ratovomalala, R.I. Dynamiques spatiales des fourrés xérophiles de Betioky-Sud et Soalara-Sud (Madagascar). In *Transitions Agraires au sud de Madagascar. Résilience et Viabilité, Deux Facettes de la Conservation. Actes du Séminaire de Synthèse du Projet FPPSM*; Hervé, D., Razanaka, S., Rakotondraompiana, S., Rafamanta-nantsoa, F., Carrière, S., Eds.; 10–11/06/2013; IRD-SCAC/PARRUR: Antananarivo, Madagascar, 2015; pp. 113–121.
- Andriamparany, J.N.; Brinkmann, K.; Jeannoda, V.; Buerkert, A. Effects of socio-economic household characteristics on traditional knowledge and usage of wild yams and medicinal plants in the Mahafaly region of south-western Madagascar. *J. Ethnobiol. Ethnomed.* **2014**, *10*, 82. [[CrossRef](#)] [[PubMed](#)]
- Fritz-Vietta, N.V.M.; Tahirindrazza, H.S.; Stoll-Kleemann, S. Local people's knowledge with regard to land use activities in southwest Madagascar—Conceptual insights for sustainable land management. *J. Environ. Manag.* **2017**, *199*, 126–138. [[CrossRef](#)] [[PubMed](#)]
- Randriamalala, J.R.; Radosy, H.O.; Razanaka, S.; Randriambanona, H.; Hervé, D. Effects of goat grazing and woody charcoal production on xerophytic thickets of southwestern Madagascar. *J. Arid Environ.* **2016**, *128*, 65–72. [[CrossRef](#)]
- Feldt, T.; Schlecht, E. Analysis of GPS trajectories to assess spatio-temporal differences in grazing patterns and land use preferences of domestic livestock in southwestern Madagascar. *Pastor. Res. Policy Pract.* **2016**, *6*, 5. [[CrossRef](#)]
- Feldt, T.; Antsonantenainarivony, O.; Schlecht, E. Feed selection on dry rangelands in South-Western Madagascar: Implications for ruminant nutrition in view of ecological and social challenge. *J. Arid. Environ.* **2017**, *144*, 81–90. [[CrossRef](#)]
- Ranaivoson, T.; Rakouth, B.; Buerkert, A.; Brinkmann, K. Wood biomass availability for smallholder charcoal production in dry forest and savannah ecosystems of south-western Madagascar. *J. Arid Environ.* **2017**, *146*, 86–94. [[CrossRef](#)]

11. Randriamalala, J.R.; Ramanantoandro, T.; Radosy, H.O.; Randriambanona, H.; Hervé, D. Annual biomass increment of Xerophytic thickets and sustainability of woody charcoal production in southwestern Madagascar. *For. Ecol. Manag.* **2017**, *400*, 139–149. [[CrossRef](#)]
12. Casse, T.; Milhøj, A.; Ranaivoson, S.; Randriamarivo, J.M. Causes of deforestation in southwestern Madagascar: What do we know? *For. Policy Econ.* **2004**, *6*, 33–48. [[CrossRef](#)]
13. Ratovonamana, R.Y.; Rajeriarson, C.; Roger, E.; Kiefer, I.; Ganzhorn, J.U. Impact of livestock grazing on forest structure, plant species composition and biomass in southwestern Madagascar. *Scr. Bot. Belg.* **2013**, *50*, 82–92.
14. Randriamalala, J.R.; Rabeniala, R.; Masezamana, H.N. Effets de la production de charbon de bois sur les fourrés xérophiles, cas du plateau de Belomotse, Madagascar. *Madag. Conserv. Dev.* **2017**, *12*, 7–12. [[CrossRef](#)]
15. Hanisch, S. Improving Cropping Systems of Semi-Arid South-Western Madagascar under Multiple Ecological and Socio-Economic Constraints. Ph.D. Dissertation, University of Kassel, Witzenhausen, Germany, 2015. Available online: <https://kobra.bibliothek.uni-kassel.de/bitstream/urn:nbn:de:hebis:34-2015070148664/9/DissertationSusanHanisch.pdf> (accessed on 30 January 2022).
16. Hänke, H. Livelihoods on the Edge: Farming Household Income, Food Security and Resilience in Southwestern Madagascar. Ph.D. Dissertation, University of Göttingen, Göttingen, Germany, 2016. Available online: <http://hdl.handle.net/11858/00-1735-0000-0028-8774-E> (accessed on 30 January 2022).
17. Hänke, H.; Barkmann, J. Insurance function of livestock, farmers coping capacity with crop failure in southwestern Madagascar. *World Dev.* **2017**, *96*, 264–275. [[CrossRef](#)]
18. Severson, K.E.; DeBano, L.F. Influence of Spanish Goats on Vegetation and Soils in Arizona Chaparral. *J. Range Manag.* **1991**, *44*, 111–117. [[CrossRef](#)]
19. Mellado, M.; Valdez, R.; Lara, L.M.; López, R. Stocking Rate Effects on Goats: A Research Observation. *J. Range Manag.* **2003**, *56*, 167–173. [[CrossRef](#)]
20. Jauregui, B.M.; Rosa-Garcia, R.; Garcia, U.; WallisDeVries, M.F.; Osoro, K.; Celaya, R. Effects of stocking density and breed of goats on vegetation and grasshopper occurrence in heathlands. *Agric. Ecosyst. Environ.* **2008**, *123*, 219–224. [[CrossRef](#)]
21. Bermejo, L.A.; de Nascimento, L.; Mata, J.; Fernández-Lugo, S.; Camacho, A.; Arévalo, J.R. Responses of plant functional groups in grazed and abandoned areas of a Natural Protected Area. *Basic Appl. Ecol.* **2012**, *13*, 312–318. [[CrossRef](#)]
22. Montes-Sánchez, J.J.; Orduño-Cruz, A.; López-Amador, R. Browse species trends in sarcocaulous shrublands used by creole goats and other domestic herbivores. *J. Arid Environ.* **2021**, *193*, 104592. [[CrossRef](#)]
23. Moser-Nørgaard, P.M.; Denich, M. Influence of livestock on the regeneration of fodder trees along ephemeral rivers of Namibia. *J. Arid Environ.* **2011**, *75*, 371–376. [[CrossRef](#)]
24. Säumel, I.; Ziche, D.; Yub, R.; Kowarik, I.; Overdieck, D. Grazing as a driver for *Populus euphratica* woodland degradation in the semi-arid Aibi Hu region, northwestern China. *J. Arid Environ.* **2011**, *75*, 265–269. [[CrossRef](#)]
25. Archer, E.R.M. Beyond the “climate versus grazing” impasse: Using remote sensing to investigate the effects of grazing system choice on vegetation cover in the eastern Karoo. *J. Arid Environ.* **2004**, *57*, 381–408. [[CrossRef](#)]
26. Oba, G. Effects of excluding goat herbivory on *Acacia tortilis* woodland around pastoralist settlements in northwest Kenya. *Acta Oecol.* **1998**, *19*, 395–404. [[CrossRef](#)]
27. Oba, G.; Post, E. Browse production and offtake by free-ranging goats in an arid zone, Kenya. *J. Arid Environ.* **1999**, *43*, 183–195. [[CrossRef](#)]
28. Baraza, E.; Valiente-Banuet, A. Seed dispersal by domestic goats in a semiarid thornscrub of Mexico. *J. Arid Environ.* **2008**, *72*, 1973–1976. [[CrossRef](#)]
29. Rosa-García, R.; Celaya, R.; García, U.; Osoro, K. Goat grazing, its interactions with other herbivores and biodiversity conservation issues. *Small Rumin. Res.* **2012**, *107*, 49–64. [[CrossRef](#)]
30. McDonald, S.E.; Reid, N.; Waters, C.M.; Smith, R.; Hunter, J. Improving ground cover and landscape function in a semi-arid rangeland through alternative grazing management. *Agric. Ecosyst. Environ.* **2018**, *268*, 8–14. [[CrossRef](#)]
31. Cornet, A. *Essai de Cartographie Bioclimatique à Madagascar*; Carte à l'échelle de 1/2 000 000 et Notice Explicative No 55; ORSTOM: Paris, France, 1974.
32. Vieilledent, G.; Grinand, C.; Rakotomalala, F.A.; Ranaivosoa, R.; Rakotoarijaona, J.-R.; Allnutt, T.F.; Achard, F. Combining global tree cover loss data with historical national forest cover maps to look at six decades of deforestation and forest fragmentation in Madagascar. *Biol. Conserv.* **2018**, *222*, 189–197. [[CrossRef](#)]
33. Aronson, J.C.; Phillipson, P.B.; Le Floch, E.; Raminosoa, T. Dryland tree data for the southwest region of Madagascar: Alpha-level data can support policy decisions for conserving and restoring ecosystems of arid and semiarid regions. *Madag. Conserv. Dev.* **2018**, *13*, 60–69. [[CrossRef](#)]
34. Salomon, J.N. Fourrés et forêts sèches du Sud-Ouest. *Rev. Géogr. Tananarive* **1978**, *32*, 19–39.
35. Randriamalala, J.R.; Hervé, D.; Radosy, H.O.; Randriambanona, H.; Carrière, S.M. Endangered Spiny Thicket in Madagascar. In *Imperiled: The Encyclopedia of Conservation*; Elsevier: Amsterdam, The Netherlands, 2021. [[CrossRef](#)]
36. Phillipson, P.B. Endemism and non-endemism in the flora of south-West Madagascar. In *Biogéographie de Madagascar*; Lourenço, W.R., Ed.; ORSTOM: Paris, France, 1996; pp. 125–136.
37. Available online: <https://www.worldwildlife.org/ecoregions/at1311> (accessed on 20 December 2021).
38. Brinkmann, K.; Kübler, D.; Liehr, S.; Buerkert, A. Agent-based modelling of the social-ecological nature of poverty traps in southwestern Madagascar. *Agric. Syst.* **2021**, *190*, 103–125. [[CrossRef](#)]

39. Rabeniala, R.; Raoliarivelo, L.I.B.; Masezamana, H.N.; Andrianarisoa, J.H.; Randriamalala, J.R. Gestion de pâturage pour le cheptel de petits ruminants (ovins et caprins) dans une zone semi-aride du district de Toliara II. In *Q906 Project Final Report, Eastern and Southern Africa Partnership Program*; DERAD: Antananarivo, Madagascar, 2009.
40. Randriamalala, H. *Etude des Comportements Alimentaires des Caprins en Zone Semi Aride de Madagascar, Cas de la Commune Rurale de Soalara Sud*; Mémoire DEA, ESSA-Forêts; Université d'Antananarivo: Antananarivo, Madagascar, 2014.
41. Cissé, M.; Ly, I.; Nianogo, A.J.; Sané, I.; Sawadogo, J.G.; N'Diaye, M.; Awad, C.; Fall, Y. Grazing behavior and milk yield of Senegalese Sahel goat. *Small Rumin. Res.* **2002**, *43*, 85–95. [[CrossRef](#)]
42. Schlecht, E.; Dickhoefer, U.; Gumpertsberger, E.; Buerkert, A. Grazing itineraries and forage selection of goats in the Al Jabal al Akhdar mountain range of northern Oman. *J. Arid Environ.* **2009**, *73*, 355–363. [[CrossRef](#)]
43. Raoliarivelo, L.I.B.; Rabeniala, R.; Masezamana, H.N.; Andrianarisoa, J.H.; Randriamalala, J.R. Impact de la fabrication de charbon de bois sur la production et la disponibilité fourragère de pâturage en zone sub-aride, cas de la commune de Soalara-Sud, Toliara II. In *Q909 Project Final Report, Eastern and Southern Africa Partnership Program*; DERAD: Antananarivo, Madagascar, 2010.
44. Styger, E.; Rakotondramasy, H.M.; Pfeffer, M.J.; Fernandes, E.C.M.; Bates, D.M. Influence of slash-and-burn farming practices on fallow succession and land degradation in the rainforest region of Madagascar. *Agric. Ecosyst. Environ.* **2007**, *119*, 257–269. [[CrossRef](#)]
45. Klanderud, K.; Mbolatiana, H.Z.H.; Vololomboahangy, M.N.; Randimbison, M.A.; Roger, E.; Totland, O.; Rajeriarison, C. Recovery of plant species richness and composition after slash-and-burn agriculture in a tropical rainforest in Madagascar. *Biodivers. Conserv.* **2010**, *19*, 187–204. [[CrossRef](#)]
46. Randriamalala, J.R.; Hervé, D.; Randriamboavonjy, J.-C.; Carrière, S.M. Effects of tillage regime, cropping duration and fallow age on diversity and structure of secondary vegetation in Madagascar. *Agric. Ecosyst. Environ.* **2012**, *155*, 182–193. [[CrossRef](#)]
47. Randrianarison, A.; Schlaepfer, R.; Mills, R.; Hervé, D.; Razanaka, S.; Rakotoarimanana, V.; Carrière, S.M.; Buttler, A. Linking historical land use to present vegetation and soil characteristics under slash-and-burn cultivation in Madagascar. *Appl. Veg. Sci.* **2015**, *19*, 40–52. [[CrossRef](#)]
48. Leprun, J.-C.; Grouzis, M.; Randriambanona, H. Post-cropping change and dynamics in soil and vegetation properties after forest clearing: Example of the semi-arid Mikea Region (southwestern Madagascar). *C. R. Geosci.* **2009**, *341*, 526–537. [[CrossRef](#)]
49. Raharimalala, O.; Buttler, A.; Ramohavelo, C.D.; Razanaka, S.; Sorg, J.P.; Gobat, J.M. Soil-vegetation patterns in secondary slash and burn successions in Central Menabe, Madagascar. *Agric. Ecosyst. Environ.* **2010**, *139*, 150–158. [[CrossRef](#)]
50. Randriambanona, H.A.; Bemaheva, S.N.; Alame, M.; Rejo-Fienena, F.; Ranaivo, J.; Razanaka, S.; Ravonjimalala, H.R.; Hervé, D. Etude des successions végétales entre deux dates 1997 et 2012 dans la forêt de Mikea (sud-ouest de Madagascar). In *Transitions Agraires au Sud de Madagascar*; Hervé, D., Razanaka, S., Rakotondraompiana, S., Rafamantanantsoa, F., Carrière, S.M., Eds.; IRD-SCAC/PARRUR: Antananarivo, Madagascar, 2015; pp. 95–112.
51. Randriamalala, J.R.; Randriarimalala, J.; Hervé, D.; Carrière, S. Slow recovery of endangered xerophytic thickets vegetation after slash-and-burn agriculture in Madagascar. *Biol. Conserv.* **2019**, *233*, 260–267. [[CrossRef](#)]
52. Gaspard, D.T.; Venegas-González, A.; Beeckman, H.; Randriamalala, J.R.; De Ridder, M.; Tomazello-Filho, M.; Ramanantoandro, T. Tree ring responses to climate variability from xerophytic thicket of South Soalara, Madagascar. *Dendrochronologia* **2018**, *49*, 57–67. [[CrossRef](#)]
53. ABETOL. *La Stratégie d'Approvisionnement en Bois-Energie de la Ville de Toliara*; PARTAGE/WWF: Toliara, Madagascar, 2007.
54. Randriamalala, J.R.; Randrianomanana, M.; Ranaivoson, R.E.; Rabemananjara, Z.H.; Hervé, D. Estimating wood charcoal supply to Toliara town in southwestern Madagascar, a comparison of methods. *Sci. Afr.* **2021**, *14*, e01011. [[CrossRef](#)]
55. Ramaroson, R.T. Durabilité écologique de la Production de Charbon de Bois Dans le Sud Ouest malagasy, Cas Des Fourrés Xérophiles de la Commune de Soalara Sud (Toliara II, Atsimo Andrefana). In *Mémoire DEA*; Ecole Supérieure de Sciences Agronomiques, Université d'Antananarivo: Antananarivo, Madagascar, 2014.
56. Masezamana, H.N.; Andrianarisoa, J.H.; Raoliarivelo, L.I.B.; Randriamalala, J.R. Identification et analyse d'activités alternatives à la fabrication de charbon de bois dans le district de Toliara II. In *Q096 Project Final Report, Eastern and Southern Africa Partnership Program*; DERAD: Antananarivo, Madagascar, 2013.
57. Gardner, C.J.; Gabriel, F.U.L.; John, F.A.V.S.; Davies, Z.G. Changing livelihoods and protected area management: A case study of charcoal production in south-west Madagascar. *Oryx* **2015**, *50*, 495–505. [[CrossRef](#)]
58. Ferry, L.; L'Hôte, Y.; Wesselink, A. Les précipitations dans le sud-ouest de Madagascar. In *Proceedings of the Abidjan'98 Conference. Water Resources Variability in Africa during the XXI Century*, Abidjan, Côte d'Ivoire, 16–19 November 1998; pp. 89–96. Available online: https://horizon.documentation.ird.fr/exl-doc/pleins_textes/divers09-04/010017930.pdf (accessed on 5 November 2021).
59. Ranaivoson, T.; Brinkmann, K.; Rakouth, B.; Buerkert, A. Distribution, biomass and local importance of tamarind trees in south-western Madagascar. *Glob. Ecol. Conserv.* **2015**, *4*, 14–25. [[CrossRef](#)]
60. Feldt, T.; Neudert, R.; Fust, P.; Schlecht, E. Reproductive and economic performance of local livestock in southwestern Madagascar: Potentials and constraints of a highly extensive system. *Agric. Syst.* **2016**, *149*, 54–64. [[CrossRef](#)]
61. Andrianarisoa, J.H.; Randriamalala, J.R.; Randrianariveloseheno, A.R.J.M.; Rabeniala, R. Supplémentation alimentaire pour synchroniser les chaleurs et pour améliorer les performances de reproduction des caprins en zone semi-aride du Sud-Ouest malgache. *Rev. Elev. Med. Vet. Pay.* **2020**, *73*, 99–106. [[CrossRef](#)]

62. Molle, G.; Branca, A.; Ligios, S.; Sitzia, M.; Casu, S.; Landau, S.; Zoref, Z. Effect of grazing background and flushing supplementation on reproductive performance in Sarda ewes. *Small Rumin. Res.* **1995**, *17*, 245–254. [[CrossRef](#)]
63. Molle, G.; Landau, S.; Branca, A.; Sitzia, M.; Fois, N.; Ligios, S.; Casu, S. Flushing with soybean meal can improve reproductive performances in lactating Sarda ewes on a mature pasture. *Small Rumin. Res.* **1997**, *24*, 157–165. [[CrossRef](#)]
64. Neudert, R.; Olschofsky, K.; Kübler, D.; Prill, L.; Köhl, M.; Wätzold, F. Opportunity costs of conserving a dry tropical forest under REDD+: The case of the spiny dry forest in southwestern Madagascar. *For. Policy Econ.* **2018**, *95*, 102–114. [[CrossRef](#)]
65. Neudert, R.; Goetter, J.F.; Andriamparany, J.N.; Rakotoarisoa, M. Income diversification, wealth, education and well-being in rural south-western Madagascar: Results from the Mahafaly region. *Dev. S. Afr.* **2015**, *32*, 758–784. [[CrossRef](#)]
66. Hixon, M.A. Carrying capacity. In *Encyclopedia of Ecology*; Elsevier: Amsterdam, The Netherlands, 2008; pp. 528–530.
67. Popp, J.D.; McCaughey, W.P.; Cohen, R.D.H. Grazing system and stocking rate effects on the productivity, botanical composition and soil surface characteristics of alfalfa-grass pastures. *Can. J. Anim. Sci.* **1997**, *77*, 669–676. [[CrossRef](#)]
68. Kakinuma, K.; Takatsuki, T. Applying local knowledge to rangeland management in northern Mongolia: Do ‘narrow plants’ reflect the carrying capacity of the land? *Pastor. Res. Policy Pract.* **2012**, *2*, 23. [[CrossRef](#)]
69. Meshesha, D.T.; Moahammed, M.; Yosuf, D. Estimating carrying capacity and stocking rates of rangelands in Harshin District, Eastern Somali Region, Ethiopia. *Ecol. Evol.* **2019**, *9*, 13309–13319. [[CrossRef](#)] [[PubMed](#)]
70. Qin, L.; Song, X.; Wen, W.; Liu, X.; Liu, H. Research on Livestock Carrying Capacity of Arid Pastoral Areas Based on Dynamic Water–Forage–Livestock Balance in OtogBanner, China. *Water* **2020**, *12*, 2539. [[CrossRef](#)]
71. Nahed, J.; Villafuerte, L.; Grande, D.; Pérez-Gil, F.; Alemán, T.; Carmona, J. Fodder shrub and tree species in the Highlands of southern Mexico. *Anim. Feed Sci. Technol.* **1997**, *68*, 213–223. [[CrossRef](#)]
72. Sanon, H.O.; Kaboré-Zoungrana, C.; Ledin, I. Edible biomass production from some important browse species in the Sahelian zone of West Africa. *J. Arid Environ.* **2007**, *71*, 376–392. [[CrossRef](#)]
73. Genin, D.; M’Sou, S.; Ferradous, A.; Alifriqui, M. Another vision of sound tree and forest management: Insights from traditional ash shaping in the Moroccan Berber mountains. *For. Ecol. Manag.* **2018**, *429*, 180–188. [[CrossRef](#)]
74. Dechnik-Vázquez, Y.A.; García-Barrios, L.; Ramírez-Marcial, N.; van Noordwijk, M.; Alayón-Gamboa, A. Assessment of browsed plants in a sub-tropical forest frontier by means of fuzzy inference. *J. Environ. Manag.* **2019**, *236*, 163–181. [[CrossRef](#)]
75. Abu-Zanat, M.W.; Ruyle, G.B.; Abdel-Hamid, N.F. Increasing range production from fodder shrubs in low rainfall areas. *J. Arid Environ.* **2004**, *59*, 205–216. [[CrossRef](#)]
76. Louhaichi, M.; Hassan, S.; Clifton, K.; Johnson, D.E. A reliable and non-destructive method for estimating forage shrub cover and biomass in arid environments using digital vegetation charting technique. *Agrofor. Syst.* **2018**, *92*, 1341–1352. [[CrossRef](#)]
77. Sèwadé, C.; Azihou, A.F.; Fandohan, A.B.; Glèlè-Kakaï, R.L.; Mensah, G.A.; Houinato, M.R.B. Leaf biomass modeling, carrying capacity and species-specific performance in aerial fodder production of three priority browse species *Azzeria africana*, *Pterocarpus erinaceus* and *Daniellia oliveri* in Benin. *Livest. Res. Rural. Dev.* **2017**, *29*, 192. Available online: <https://www.lrrd.org/lrrd29/10/sewa29192.html> (accessed on 30 January 2022).
78. Ministère de l’Elevage. *Données Statistiques*; SAIGS/DSI: Antananarivo, Madagascar, 2012.