

ORIGINAL ARTICLE

Demographic responses of oceanic island birds to local and regional ecological disruptions revealed by whole-genome sequencing

Maëva Gabrielli^{1,2}  | Thibault Leroy³  | Jordi Salmons¹  | Benoit Nabholz⁴  |
Borja Milá⁵  | Christophe Thébaud¹ 

¹Laboratoire Évolution et Diversité Biologique (EDB), UMR 5174 (Université Paul Sabatier, CNRS, IRD), Toulouse, France

²Department of Life Sciences and Biotechnology, University of Ferrara, Ferrara, Italy

³GenPhySE, INRAE, INP, ENVT, Université de Toulouse, Castanet-Tolosan, France

⁴Institut des Sciences de l'Évolution de Montpellier, UMR 5554 (Université de Montpellier, CNRS, IRD, EPHE), Montpellier, France

⁵National Museum of Natural Sciences, Spanish National Research Council (CSIC), Madrid, Spain

Correspondence

Maëva Gabrielli, Laboratoire Évolution et Diversité Biologique (EDB), UMR 5174 (Université Paul Sabatier, CNRS, IRD), Toulouse, France.
Email: maeva.gab@hotmail.fr

Funding information

'Laboratoire d'Excellence' TULIP; Agence Française pour le Développement; Agence Nationale de la Recherche, Grant/Award Number: ANR-14-CE02-0002; Fondation pour la Recherche sur la Biodiversité; Fonds Inkermann; Ministère de l'Enseignement Supérieur et de la Recherche Scientifique; National Geographic Society

Handling Editor: Angus Davison

Abstract

Disentangling the effects of ecological disruptions operating at different spatial and temporal scales in shaping past species' demography is particularly important in the current context of rapid environmental changes driven by both local and regional factors. We argue that volcanic oceanic islands provide useful settings to study the influence of past ecological disruptions operating at local and regional scales on population demographic histories. We investigate potential drivers of past population dynamics for three closely related species of passerine birds from two volcanic oceanic islands, Reunion and Mauritius (Mascarene archipelago), with distinct volcanic history. Using ABC and PSMC inferences from complete genomes, we reconstructed the demographic history of the Reunion Grey White-eye (*Zosterops borbonicus* (Pennant, 1781)), the Reunion Olive White-eye (*Z. olivaceus* (Linnaeus, 1766)) and the Mauritius Grey White-eye (*Z. mauritanus* (Gmelin, 1789)) and searched for possible causes underlying similarities or differences between species living on the same or different islands. Both demographic inferences strongly support ancient and long-term expansions in all species. They also reveal different trajectories between species inhabiting different islands, but consistent demographic trajectories in species or populations from the same island. Species from Reunion appear to have experienced synchronous reductions in population size during the Last Glacial Maximum, a trend not seen in the Mauritian species. Overall, this study suggests that local events may have played a role in shaping population trajectories of these island species. It also highlights the potential of our conceptual framework to disentangle the effects of local and regional drivers on past species' demography and long-term population processes.

KEYWORDS

demographic inferences, effective population size, global change, Mascarene archipelago, population genomics, *Zosterops*

Borja Milá and Christophe Thébaud equal authorship contributions.

This is an open access article under the terms of the [Creative Commons Attribution-NonCommercial](https://creativecommons.org/licenses/by-nc/4.0/) License, which permits use, distribution and reproduction in any medium, provided the original work is properly cited and is not used for commercial purposes.

© 2024 The Authors. *Molecular Ecology* published by John Wiley & Sons Ltd.

1 | INTRODUCTION

Ecological disruptions due to variations in environmental conditions can have profound effects on local population size by directly affecting individual physiology or indirectly modifying population niche limits. These disruptions can be triggered by major environmental events, such as global climatic changes, that can lead to drastic reductions in population size. Such bottlenecks have important consequences for gene pools owing to their effect on effective population sizes (N_e) (Maruyama & Fuerst, 1985; Nei et al., 1975; Tajima, 1989; Watterson, 1984). Such effects have been documented across different taxa in the case of past global climatic events, implying some synchrony in population fluctuations at a very large spatial scale in response to climatic changes (Chattopadhyay et al., 2019; Germain et al., 2023). In turn, severe ecological disruptions at the local level can have more temporary and localized effects on populations. These include volcanic eruptions, forest fires and direct or indirect human impacts on the environment through predation or habitat modification, all of which have the capacity to radically transform local landscapes (Dornelas, 2010). Distinguishing the effects of local-scale drivers relative to large-scale processes in shaping the demography of populations and species over time, especially when both occurred in the past before human impact, might be essential if we want to predict accurately how human-driven climate change will challenge the global persistence of many species and their conservation (Nogués-Bravo et al., 2018; Urban et al., 2016). Yet, evaluating the relative importance of local-based and global-based influences remains challenging since past local effects are generally poorly understood at the scale of a species' range and can be confounded by global effects.

Volcanic oceanic islands possess a number of features that could help to solve problems associated with the difficulty of distinguishing the effects of past ecological disruptions operating at local versus regional scales on population demographic histories (Warren et al., 2015). First, they have usually undergone a series of localized processes, such as major geodynamic events (Whittaker et al., 2008) or human impact, but have also experienced the effects of past changes in the global climate (Weigelt & Kreft, 2013). Second, most volcanic oceanic islands are configured into groups of islands that are closely spaced and have similar origins, geophysical settings and climates. Yet, each island within such volcanic archipelagos has its own geological life cycle (Whittaker et al., 2008), and different islands have experienced independent bouts of ecological disruptions, mainly owing to volcanic episodes and related geodynamic processes that are often asynchronous across islands. Therefore, studying volcanic archipelagos with islands at different stages of their life cycle could allow for assessing the relative importance of local (i.e. island-specific) and regional (i.e. at the archipelago scale) disruption events on population size trajectories by comparing long-term demographic responses of species living on the same or different islands within an archipelago (Figure 1). In addition, the isolated nature of these islands is an asset for inferring demographic histories of insular lineages as most species are island endemics and interference from

external source populations that can generate complex demographic scenarios, as is often found in continental settings, is expected to be minimal (Losos & Ricklefs, 2009). Furthermore, because different islands often host allopatric sister species, archipelagos allow for the comparison of demographic histories from immediately related species, minimizing possible higher level confounding effects (Weir & Lawson, 2015).

Some studies have inferred the demographic histories of species from volcanic archipelagos (e.g. Lamichhaney et al., 2015; Martin et al., 2021), but did not attempt to compare the population histories of species living on the same and different islands. Here, we propose to do so using, as a study system, the Mascarene archipelago, a remote island group in the southwestern Indian Ocean composed of two main islands, Mauritius and Reunion. The two islands are separated by 140 km of deep water and were never connected to each other (Thébaud et al., 2009). They are comparable in size while being at different stages of island ontogeny (see Fernández-Palacios et al., 2011), and therefore exhibit very different topographies: Reunion, a younger island (2 my) is in the erosion and landslide phase and has a very rugged landscape, reaching an elevation of 3071 m, while Mauritius, an older island (8 my) in the late basal plain phase, has experienced the long-term effects of erosion and culminates at just 828 m (Duncan, 2009). Global climatic events, including Late Quaternary events, appear to have affected species' demographic histories on both islands (de Boer et al., 2015; Garot et al., 2019; Heller et al., 2008; Salmona et al., 2012; Salmona, Heller, Quéméré, et al., 2017). However, the intensity of ecological disruption as experienced by animal and plant populations may have been very different on the two islands since the persistence of possible refugia during extreme cooling events is positively related to mountainous topography (Harter et al., 2015; Mastretta-Yanes et al., 2015; but see Salces-Castellano et al., 2021). Localized and temporary, island-specific events likely to have affected many species' population trajectories have also occurred on both islands (A. Cheke & Hume, 2010). In particular, a series of large explosive volcanic eruptions that took place around 200,000 ya (198,800 ya \pm 2500 years) on Reunion (Castellanos Melendez et al., 2023), and a series of basaltic lava flows that have occurred regularly (on average every 21,000 years) in the last 500,000 years on Mauritius, which currently cover nearly 75% of the island (Moore et al., 2011).

To illustrate potential effects of local and regional disruption events on population demographic trajectories, we focused on three species of white-eyes (Zosteropidae), all single-island endemics in the Mascarene Archipelago (Milá et al., 2010; Warren et al., 2006; Figure 2). These small passerine birds show limited dispersal capacity (Bertrand et al., 2014; Chris Smith, pers. comm.), a feature that could make them sensitive to major climatic and environmental changes (Germain et al., 2023). We hypothesized that (1) if island-specific events had major effects on species' demography, we should recover island-specific demographic signals shared by species living on a particular island, and similarly, (2) if regional climatic events had severe impacts on species at the scale of the entire archipelago, we should find similar signals of demographic events between species

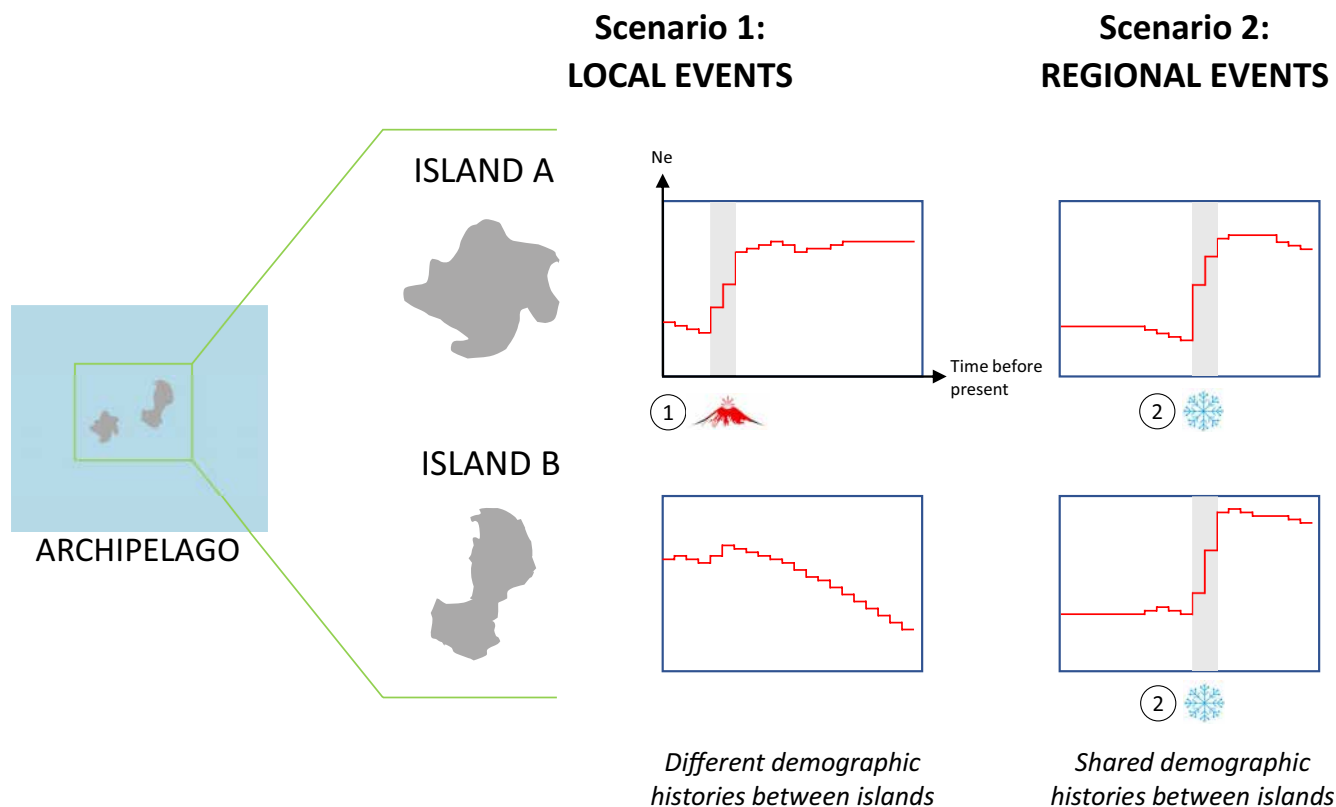


FIGURE 1 Proposed strategy to compare the effects of local events and regional events on genetic diversity by comparing the demographic histories of closely related populations or species inhabiting different islands from the same volcanic oceanic archipelago. Plots represent effective population size (N_e) through time for a population or species, and numbers indicate different events of ecological disruption associated with bottlenecks: event 1 is a volcanic eruption on island A while event 2 corresponds to a regional drop in temperatures, as observed during a glacial maximum, that affects demographic histories on islands A and B synchronously, all else being equal. Contemporary bottlenecks suggest the importance of events at a large geographic scale while bottlenecks associated with island-specific events suggest the importance of local events as drivers of population histories.

living on different islands (Figure 1). Taking advantage of the recent public release of a high-quality reference genome for the Reunion Grey White-eye (*Zosterops borbonicus* (Pennant, 1781)) (Leroy, Anselmetti, et al., 2021), we used shotgun sequencing to generate whole-genome sequence data from the Reunion Grey White-eye, the Reunion Olive White-eye (*Zosterops olivaceus* (Linnaeus, 1766)) and the Mauritius Grey White-eye (*Zosterops mauritanus* (Gmelin, 1789)). The first two species are endemic to Reunion whereas the third species is endemic to Mauritius. All three species are immediate relatives (Milá et al., 2010; Warren et al., 2006; Figure 2) and are common and widely distributed in their respective islands. Therefore, it seems reasonable to assume that their long-term population dynamics have been little affected by anthropogenic activities since humans colonized these islands (A. Cheke & Hume, 2010). In addition, the Reunion Grey White-eye is represented by multiple geographic forms that originated and diversified within Reunion (Gabrielli et al., 2020; Gill, 1973). Three forms are restricted to the lowlands, whereas a fourth form is only found in the highlands, primarily between 1400 and 3000m (Bertrand et al., 2016; Cornuault et al., 2015). These forms can therefore be considered as replicates of lineages from the same island but also as indicators of within-island

environmental differences. To reconstruct the long-term trajectory of effective population sizes (Emerson et al., 2001), we first used a series of Markovian coalescent analyses at the individual level. Although these approaches have been intensively used in the past decade (Li & Durbin, 2011; Schiffels & Durbin, 2014; Terhorst et al., 2017), a potentially serious limitation to using Markovian coalescent methods is that they assume that the focal species behaves as a panmictic unit (Mazet et al., 2016). Therefore, we also used demographic inferences based on Approximate Bayesian Computation (ABC; Beaumont et al., 2002), since they allow the evaluation of various scenarios of population size changes accounting for periods of gene exchange and estimate the timing of demographic events. Our results strongly support ancient expansions in the three species, likely associated with evolutionary processes that took place on the islands themselves since they diverged from an ancestral stock. Furthermore, our results indicate that the two species of Reunion white-eyes have similar demographic histories, distinct from the demographic history of the Mauritius Grey White-eye. These findings suggest that local events have played a rather significant role in shaping population trajectories in Mascarene white-eyes. Our conceptual framework and its working hypotheses appear to provide

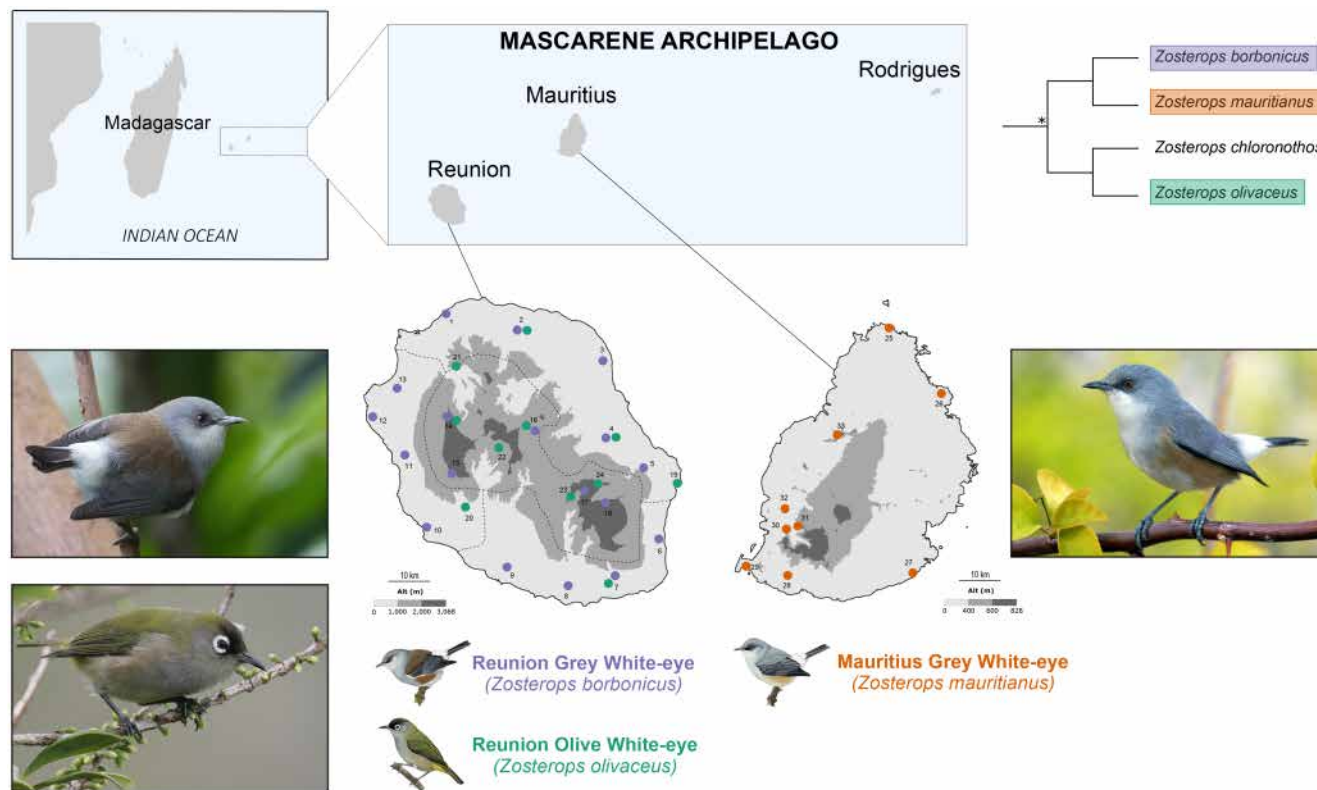


FIGURE 2 Distribution range and sampling localities. Localities are labelled with numbers (see Table S1 for names and coordinates) and circles with different colours represent samples from Reunion Grey White-eye (purple), Reunion Olive White-eye (green) and Mauritius Grey White-eye (orange). Grey colours represent elevation classes; for Reunion: light grey=elevation below 1000m, medium grey=elevation between 1000 and 2000m, dark grey=elevation above 2000m; for Mauritius: light grey=elevation below 400m, medium grey=elevation between 400 and 600m, dark grey=elevation above 600m. Dotted lines separate the distribution ranges of the four Reunion Grey White-eye geographic forms. Phylogenetic relationships among the four endemic Mascarene white-eyes are adapted from Warren et al. (2006), with the asterisk denoting the divergence time between the two sister lineages, estimated at 1.2 Mya. Illustrations by Douglas Pratt from Birds of the World, reproduced with permission from Cornell university for the digital version and Lynx edicions for the print version. Photo credits: Stanislas Harvančík (Reunion Grey White-eye), Simon Colenutt (Reunion Olive White-eye) and Hilary Jones (Mauritius Grey White-eye).

an improved basis for disentangling the effects of local and regional drivers on the past demography of species and a better understanding of population processes that are of paramount conservation importance in the current context of rapid environmental change driven by both local and regional factors of ecological disruption.

2 | MATERIALS AND METHODS

2.1 | Population sampling and DNA sequence data

Blood samples from a total of 42 individuals, captured in mistnets and then released, were collected between 2007 and 2017 throughout the entire distribution of the Reunion Grey White-eye (22 individuals from 18 localities), the Reunion Olive White-eye (11 individuals from 11 localities) and the Mauritius Grey White-eye (nine individuals from nine localities) (Figure 2; Table S1). Approximately 1 µg of high-quality DNA was extracted using a QIAGEN DNeasy Blood & Tissue kit following the manufacturer's instructions, with an extra pre-digestion grinding step. Genomic DNA extractions were sent to

Novogene Bioinformatics Technology (Beijing, China; 25 individuals) and GeT-PlaGe core facility (INRA, Toulouse; nine individuals) for shotgun whole-genome resequencing with an Illumina HiSeq2500 sequencer. Our dataset includes data from eight individuals sequenced using similar procedures in previous studies (Bourgeois et al., 2017; Leroy, Anselmetti, et al., 2021).

2.2 | Reference-based whole-genome processing

To genotype individuals, sequencing reads of all three species were first mapped against the high-quality genome assembly (scaffold N50 exceeding one megabase) of a Reunion Grey White-eye (Leroy, Anselmetti, et al., 2021) using the bwa-mem algorithm (Li & Durbin, 2009) with default parameters. Single nucleotide polymorphisms (SNPs) were then called for each species independently using GATK v. 3.7 (McKenna et al., 2010) using base quality score recalibration and indel realignment. Both variant and invariant sites were called (option "--includeNonVariantSites"). Variant filtration was performed using a custom script to speed up computations, but

following the same procedures than under GATK, using the following thresholds: $QD > 2.0$, $FS < 60.0$, $MQ > 40.0$, $MQRANKSUM > -2.0$, $READPOS RANKSUM > -2.0$ and $RAW_MQ > 45,000$. The three species were also genotyped together for multi-population demographic inferences using the same variant filtration procedure. After filtering, the mean individual coverage was 15x (see Table S2 for details about the samples used). To check for the general consistency of the obtained genomic dataset, we performed a principal component analysis with PLINK v. 1.90b5.3 (Purcell et al., 2007) and plotted the results in R version 3.5 (R Core Team, 2020) with adegenet v. 2.1.1 (Jombart, 2008; Figure S1).

2.3 | Mutation rate and generation time estimates

Mutation rate and generation time are two key parameters in population genetic inference. In this study, we used the same set of parameter values for the three focal species, considering that they diverged from a common ancestor 1.2 million years ago at most (Martins et al., 2020; Warren et al., 2006), and genomic features tend to be conserved in birds (Kawakami et al., 2014; Singhal et al., 2015). We used a mutation rate of $4.6e^{-9}$ mutations per site per generation (95% confidence interval: $3.4e^{-9}$ – $5.9e^{-9}$) based on a direct estimate for the Collared Flycatcher (*Ficedula albicollis* (Temminck, 1815)) (Smeds et al., 2016). A few estimates of generation times are available for *Zosterops* species, suggesting short generation times, possibly less than a year (Cornetti et al., 2015; Moyle et al., 2009), but generation time is between 2 and 3 years in the Heron Island population of Silvereye (*Zosterops lateralis chlorocephalus* Gould, 1841) (Clegg et al., 2002; Estoup & Clegg, 2003). Thus, we used a generation time of 1 year but also ran our analyses using values ranging between 0.5 and 2 years to account for uncertainty.

2.4 | Demographic inferences

We used two independent approaches to reconstruct the demographic histories of the three Mascarene white-eyes.

2.4.1 | Markovian coalescent analyses

In order to estimate the historical population size trajectory in each species, we first performed inferences of N_e using the Pairwise Sequentially Markovian Coalescent (PSMC, Li & Durbin, 2011) since this method can be readily applied to unphased whole-genome sequence data. Briefly, the PSMC model infers the local time to the most recent common ancestor (TMRCA) on the basis of the local density of heterozygotes and estimates the inverse instantaneous rate (IICR) of a sample which is equivalent to population size in panmictic models (Mazet et al., 2016). We considered two different thresholds for the minimum sequence length, either 1000 or 100,000bp. For each individual, a custom script was used to convert

genotypes into PSMC input format, i.e., converting each 100-base pair window into K if the window contains at least one heterozygote site and T otherwise, using the following filters: $QUAL > 100$, $10 < depth < 150$, N_ratio (ratio of missing data in the window) < 0.9 . Sites outside these thresholds were considered to be missing (N). We set the upper limit of the TMRCA to 5 and the initial θ/ρ value to 1 and we used the atomic interval scheme “4+30×2+4+6+10” as in Nadachowska-Brzyska et al. (2016).

2.4.2 | Approximate Bayesian computation inferences

We performed ABC inferences from whole-genome sequence data using DILS (Demographic Inferences with Linked Selection; Fraïsse et al., 2021). This pipeline gathers ABC demographic inferences of population size changes and timing of gene flow during divergence using either single-population models (Figure S2a) or two-population models (Figure S2b). As DILS needs sequences as input, we performed a whole-genome sequence reconstruction at the individual level (two sequences per chromosome considering diploidy) for all individuals as published in Leroy, Rousselle, et al. (2021), and then generated DNA segments of 10kb for all the scaffolds with a scaffold size exceeding 10kb and kept scaffolds between 1 and 10kb as one DNA segment. In addition, reconstructed sequences with an N content exceeding 50% (missing information) were discarded. Eight summary statistics were used for single-population models: number of biallelic sites, pairwise nucleotide diversity (π) (Tajima, 1983), Watterson's θ (Watterson, 1975) and Tajima's D (Tajima, 1989), considering the average and standard deviation of each measure. Thirty-seven summary statistics were used for two-population models, including the same estimates of genetic diversity for each population, and measures of differentiation and divergence between populations (F_{ST} : Weir & Cockerham, 1984; Wright, 1943; net divergence: Nei & Li, 1979) (see Table S3 for a list of all summary statistics). For all inferences, model comparison was performed using a random forest algorithm. Two million simulations were run under the best model to perform parameter estimations, and four rounds of goodness-of-fit were run to refine parameter estimation (Fraïsse et al., 2021).

We first used single-population models for each of the three species to compare three scenarios involving either a constant population size (i) or a change of population size over time, with either an expansion (ii) or a contraction (iii) (Figure S2a). Models including homogeneous or heterogeneous N_e across the genome were compared. Three parameters were estimated for single-population models, namely, population size prior to the population size change event (N_{ANC}), population size after this event (N_{POP}) and time since this event in number of generations (T_{dem}). The priors used for each parameter are detailed in Table S4.

Since single-population models assume closed systems, we also used models of two-population divergence with different timing of gene flow, with two models assuming current isolation, i.e., absence of ongoing gene flow, (SI: strict isolation; AM: ancestral migration),

and two models assuming ongoing gene flow (IM: isolation with migration; SC: secondary contact) (Figure S2b). These four models assume the instantaneous split of an ancestral population into two daughter populations that diverge either without any migration (SI), with continuous introgression since the time of split (IM), with a period of migration in the early times of lineage divergence only (AM), or with a period of migration occurring upon secondary contact after an initial period of strict isolation (SC). The models also included a possible change in population size in the daughter populations after the ancestral split. Eight parameters were estimated for all two-population models, namely, the population size of the ancestral population (N_{ANC}), the time of the split between the two populations (T_{split}), the population sizes of the daughter populations after the split (N_{ANC1} and N_{ANC2}), the time of the potential demographic change (T_{dem1} and T_{dem2}) and the population sizes of the daughter populations after the demographic change (N_{POP1} and N_{POP2}). The time of the secondary contact (T_{SC}) was estimated in the SC model, and the time of ancestral migration cessation (T_{AM}) was estimated in the AM model. Daughter population migration rates were estimated for the three models involving migration (IM, AM and SC). The priors used for each parameter are detailed in Table S4. We run these models for the three possible pairs of species (Reunion Grey White-eye–Mauritius Grey White-eye; Reunion Grey White-eye–Reunion Olive White-eye and Mauritius Grey White-eye–Reunion Olive White-eye).

3 | RESULTS

Population size history reconstructions through PSMC analyses support contrasting population size trajectories between species living on different islands (Figure 3). While cycles of expansions and contractions are observed in the Reunion Grey and Olive White-eyes, Mauritius Grey White-eyes present a clear signal of long-term expansion. Specifically, in the Reunion Grey White-eye, a population decline was detected that could coincide with the Last Glacial Maximum (LGM; 21,000 ya), while, over the same period of time, only a slight reduction or population size stasis was detected in the Reunion Olive White-eye. In contrast, PSMC analyses indicate that the Mauritius Grey White-eye underwent an expansion in the corresponding time window, suggesting that the LGM might have had a lower impact on this species than on the Reunion species. Similar demographic histories were reconstructed for the different geographic forms of the Reunion Grey White-eye (Figure S3), with a possibly stronger reduction in population size around the time of the LGM in the highland form. Even after considering substantial variation in the mutation rate and generation time (Figure S4), our main conclusions still hold. Similarly, restricting the analysis to the longest sequences with a minimal length of 100,000bp instead of 1000bp led to similar results (Figure S5), suggesting that our results are robust to a certain extent to methodological limits and parameter uncertainties.

In general agreement with the PSMC analyses, ABC demographic reconstruction highlighted a strong signal of expansion for

all species, in single-population models as well as in two-population models. For single-population inferences, models including an expansion phase had a very high posterior probability (≥ 0.95) compared to models including a bottleneck or constant population size (Table S5). More specifically, ancestral N_e values were estimated to be around 35,000, 65,000 and 130,000 individuals for the Reunion Grey White-eye, Mauritius Grey White-eye and Reunion Olive White-eye, respectively, and current N_e values were estimated to be around 100,000, 490,000 and 700,000, respectively, representing 2.8-, 7.5- and 5.4-fold increases (Table S6). Based on these models, the onsets of expansion were very different between Reunion and Mauritius Grey White-eyes (around 20,000 generations ago and 45,000 generations ago respectively) and the Reunion Olive White-eye (around 250,000 generations ago).

Two-population models of divergence inferred an ancestral migration scenario as the most likely (posterior probability higher than 0.81 for current isolation models and higher than 0.67 for ancestral migration versus strict isolation; Figure S6), with a brief period of ancestral gene flow in all species comparisons (median values for the T_{AM}/T_{SPLIT} ratio: 0.72, 0.94 and 0.73 for Reunion Grey White-eye–Mauritius Grey White-eye; Reunion Grey White-eye–Reunion Olive White-eye and Mauritius Grey White-eye–Reunion Olive White-eye, respectively). Evidence for current isolation between species was expected, especially for species living on different islands and estimates of divergence times that were obtained in our models are consistent with previous estimates (Cai et al., 2019; Warren et al., 2006), suggesting that the temporal framework of our demographic inferences using ABC may be quite robust. Parameter estimations obtained using these models suggested 10-fold expansions from ancestral N_e of between 35,000 and 75,000 individuals to current N_e of between 400,000 and 800,000 individuals across the three species (Table 1). These expansions seemed to be rather ancient for the Reunion Grey and Olive White-eyes, with an expansion estimated around 70%–90% of the time of divergence, while the expansion inferred for the Mauritius Grey White-eye seemed more recent (30%–50% of the time of divergence), highlighting again the importance of island-specific events on population size trajectories.

Results from ABC demographic inferences for one of the four geographic forms of the Reunion Grey White-eye, the Grey-Headed Brown form (GHB), are consistent with those considering all Reunion Grey White-eye geographic forms together (Tables S5 and S6; Table 1), suggesting that the different geographic forms may have experienced similar population trajectories.

4 | DISCUSSION

Reconstructing long-term population dynamics using whole-genome data has been key in revealing how past regional climatic events influenced changes in population size through time in many different taxa (e.g. Chattopadhyay et al., 2019; Germain et al., 2023; Nadachowska-Brzyska et al., 2015). Yet, populations and species face ecological disruptions over time that can vary from being

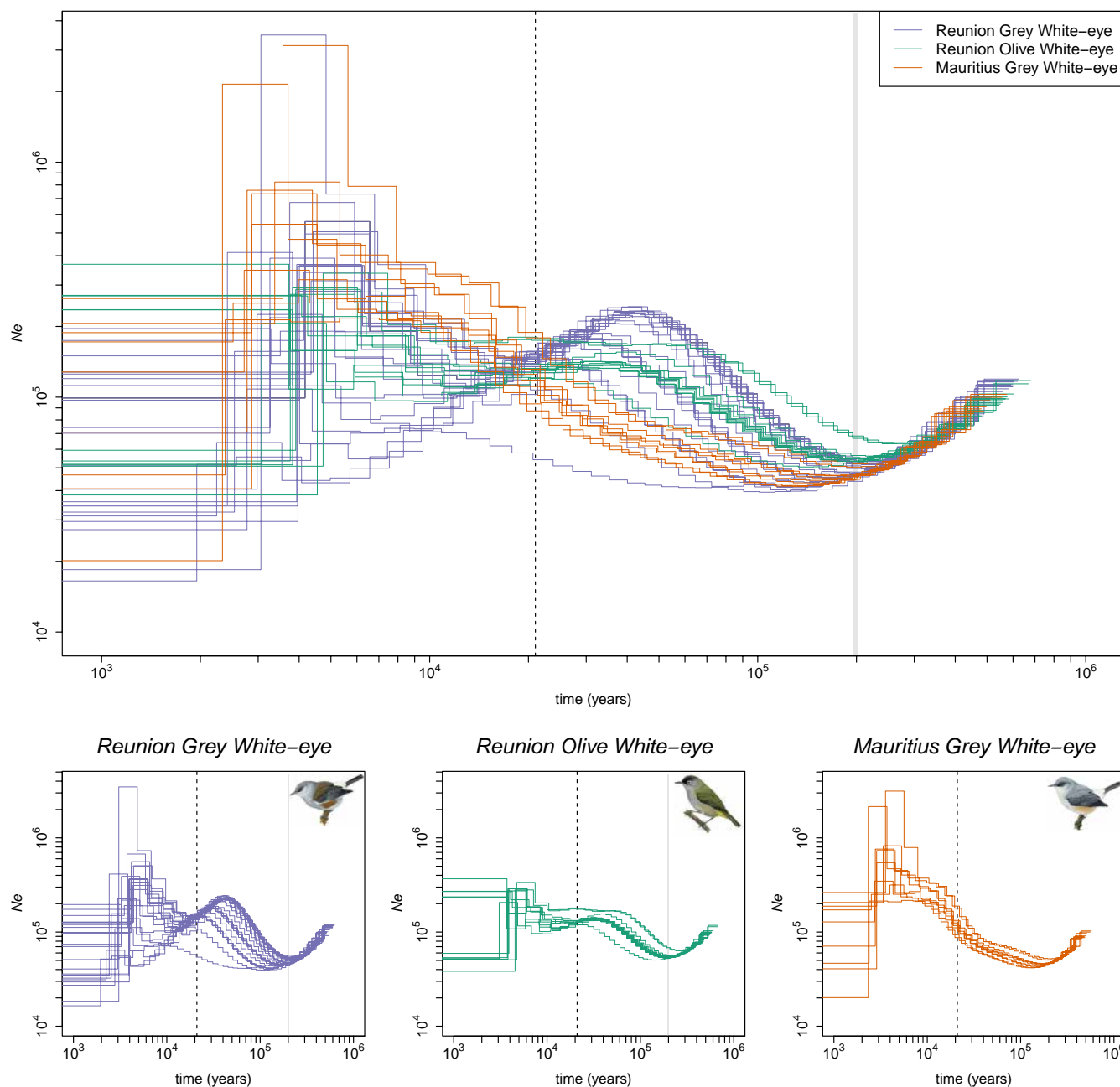


FIGURE 3 PSMC inferences of population size histories over time. Colours correspond to the three white-eye species, and each line represents a different individual. Vertical dotted lines and grey vertical bars indicate (from left to right): the Last Glacial Maximum 21,000 ya and a catastrophic period of large explosive eruptions in Reunion around 200,000 ya. In Mauritius, volcanic activity has been quite intense throughout the last 500,000 years but was never explosive during that period. Please note that the plots are in log-scales. Illustrations by Douglas Pratt from Birds of the World, reproduced with permission from Cornell university for the digital version and Lynx editions for the print version.

temporary and localized to regional or even global with no necessary synchrony between the two types of events. Therefore, estimates of the changes in effective population sizes as visualized in PSMC profiles may reflect demographic responses to a number of distinct events acting at different temporal and spatial scales and individual effects that may be difficult to distinguish from one another. In addition, the combined effects of these different sources of variation on population demographic histories may also be accompanied by variation in population structure, to which current approaches

have been shown to be very sensitive (Chikhi et al., 2018; Mazet et al., 2016; Wakeley, 1999). In an attempt to alleviate this difficulty and distinguish the effects of local and regional disruption events on population demographic trajectories, our study used volcanic oceanic islands as a spatial and temporal framework, whole-genome data obtained from closely related species, and ABC demographic inference in addition to PSMC to uncover population size changes that could be attributable to the different types of events. We obtained two key findings. First, we found that species from the same island

TABLE 1 Parameter estimation for two-population demographic scenarios in DILS. Numbers outside brackets indicate median values while numbers inside brackets indicate confidence intervals (2.5%–97.5%). Nine parameters were estimated, namely, the population size of the ancestral population (N_{ANC}), the time of the split between the two populations (T_{split}), the population sizes of the daughter populations after the split (N_{ANC1} and N_{ANC2}), the time of the potential demographic change (T_{dem1} and T_{dem2}), the population sizes of the daughter populations after the demographic change (N_{POP1} and N_{POP2}) and the time of ancestral migration cessation (T_{AM}). For each pair, populations 1 and 2 are the first and second population of the pair, respectively. See [Figure S2B](#) for a representation of this scenario of divergence.

ABC model parameters									
	N _{ANC}	T _{split}	N _{ANC1}	N _{ANC2}	T _{dem1}	N _{POP1}	T _{dem2}	N _{POP2}	T _{AM}
Reunion Grey White-eye-Mauritius Grey White-eye	115,681 (103,039-130,232)	128,291 (95,638-168,209)	46,070 (24,675-76,275)	48,886 (30,636-77,610)	98,879 (80,019-121,191)	631,186 (487,328-742,422)	69,215 (55,562-86,687)	537,411 (396,932-661,929)	92,045 (75,532-110,466)
Reunion Grey White-eye (GHB form)-Mauritius Grey White-eye	84,075 (73,819-97,160)	115,323 (86,075-152,274)	66,184 (36,219-109,992)	47,120 (27,039-74,713)	91,004 (69,428-116,346)	443,404 (338,203-581,931)	60,632 (46,932-80,056)	405,894 (284,879-536,721)	93,817 (74,518-112,903)
Reunion Grey White-eye-Reunion Olive White-eye	234,347 (200,173-275,027)	318,314 (255,817-398,370)	67,133 (22,956-120,907)	55,254 (24,862-96,435)	234,291 (188,145-290,008)	797,268 (604,018-915,561)	293,743 (234,835-364,791)	816,811 (651,688-945,258)	299,302 (241,213-350,777)
Mauritius Grey White-eye-Reunion Olive White-eye	237,298 (192,706-277,644)	431,242 (299,381-559,243)	76,860 (41,129-120,390)	34,639 (16,827-58,066)	118,964 (91,229-141,605)	745,166 (556,712-916,230)	291,374 (218,052-356,087)	407,800 (322,593-453,945)	316,104 (258,245-385,771)

(Reunion) showed similarities in their population size trajectories that differed from the one reconstructed for the species from the other island (Mauritius); and second, that this pattern also applied to within-island geographic forms of the Reunion Grey White-eye that exhibited similar demographic histories, distinct from the demographic history of the sister taxon, the Mauritius Grey White-eye.

These findings suggest that local events have played a significant role in shaping population trajectories in these island bird species. They also highlight the potential of our conceptual framework and its working hypotheses in disentangling the effects of local and regional drivers on past demography of species. This is crucial to obtain a better understanding of long-term population processes that are of paramount conservation importance in the current context of rapid environmental change driven by both local and global factors of ecological disruption (Leung et al., 2020; Nogués-Bravo et al., 2018; Urban et al., 2016).

What could be the factors explaining shared response to local (island-specific) ecological disruptions in our study system? In the two Reunion species of white-eyes, the period of lowest N_e corresponds approximately to the LGM, while in the Mauritius Grey White-eye, this episode seems to have had no effect on the demographic history. Thus, global drivers like LGM seem to have some effects but the response to these effects may vary depending on local conditions and the ecology of the species, although this last factor is probably unimportant here given how closely related and ecologically similar white-eye species are in both islands (Cheke, 1987). Similar evidence of a bottleneck associated with the LGM timing has been observed in the Reunion coffee tree (*Coffea mauritiana* Lam., 1783) (Garot et al., 2019) and was interpreted as being the result of a range contraction due to major drops in both precipitation (Yan et al., 2016) and temperature (Barrows & Juggins, 2005), especially on the leeward side of the island. Since the Reunion coffee tree is a widespread forest species, this may imply that forest extent may have been greatly reduced during the LGM, which might have impacted bird populations, especially at lower elevations, according to a well-known scenario of distribution shifts in response to Quaternary climatic fluctuations (Hewitt, 2000). Reduction of forest area at the LGM and restriction in refugia have been reconstructed in many instances (e.g. Carnaval & Moritz, 2008) with possible demographic consequences on the fauna the forest remnants sheltered (e.g. Maldonado-Coelho, 2012). Elevational downward shifts of ecosystems towards the coast can be expected during glacial events (Fernández-Palacios et al., 2016), especially in high-elevation islands like Reunion (see Salces-Castellano et al., 2021). The highland habitat might have become less suitable and the species' range may have contracted towards the coast. In line with this, our PSMC results indicate that the highland form of the Reunion Grey White-eye may have experienced a stronger bottleneck associated with the LGM than the other forms restricted to the lowlands. By contrast, our Mauritius Grey White-eye PSMC analyses suggest that the population kept expanding during the LGM. As Mauritius is a low-elevation island, it is possible that during the LGM Mauritius offered more suitable lowland habitats compared to Reunion. Furthermore,

the globally low sea level associated with the LGM translated into an increase in land area that was more substantial for Mauritius (50%) than for Reunion (10%) (Norder et al., 2018). The 4200 BP megadrought that has been documented in East Africa (Marchant & Hooghiemstra, 2004; Thompson, 2002), North America (Booth et al., 2005), India (Staubwasser et al., 2003), Madagascar (Gasse & Van Campo, 2001) and Mauritius (de Boer et al., 2015; Rijdsdijk et al., 2011) and has been associated with massive mortality and population bottlenecks of Western Indian Ocean and African species (Heller et al., 2008; Rijdsdijk et al., 2011; Salmona et al., 2012; Salmona, Heller, Lascoux, et al., 2017) must have impacted populations of our study species, but it left no detectable signature in the population trajectories that we recovered. However, PSMC analysis lacks resolution at such recent dates, as shown in Figure 3, and spurious signals of bottlenecks are often observed in the lower time limit of PSMC efficiency (1000–10,000 ya) limiting the use of that approach for recent periods (Li & Durbin, 2011). While some new methods have become available to reconstruct demographic histories close to the present (Terhorst et al., 2017), understanding the impact on population size of very recent events still remains a challenge and requires larger datasets with multiple resequenced individuals per species (Patton et al., 2019; Wilder et al., 2023). Lastly, we did not detect bottlenecks associated with major dated volcanic eruptions that occurred in either Reunion or Mauritius, as it has been observed in other island bird systems (Bemmels et al., 2022). This could indicate that the volcanic eruptions in the Mascarenes did not affect the totality of the islands in spite of the magnitude of some events, in particular a series that occurred around 200 kya on Reunion and are thought to have wreaked havoc on a large area of the island (Castellanos Melendez et al., 2023; Fretzdorff et al., 2000) and/or that the white-eyes were able to find habitat refugia in which they maintained relatively high population sizes in spite of the possible devastation of most of the island. This view is supported by our results from both PSMC and ABC demographic inferences that strongly support ancient and long-term expansions in the three study species, likely associated with evolutionary processes which took place on the islands themselves since the species diverged from an ancestral stock and reflecting the radiation of the Mascarene white-eyes (Warren et al., 2006).

While our study recovered potentially important information about how the demographic history of island species may have been influenced by ecological disruption acting at different spatial and temporal scales, it also highlights a series of difficulties and limitations inherent to this kind of investigations. First, population structure was not explicitly taken into account in our study; yet, it can severely bias demographic inferences. For instance, it has been shown that a PSMC signal consistent with population size changes can be obtained in a population without any change of population in its history but with just changes in connectivity between subpopulations (Grusea et al., 2019; Mazet et al., 2016; Rodríguez et al., 2018). Our PSMC reconstructions were similar for all four geographic forms of the Reunion Grey White-eye, and all ABC inferences for one particular geographic form (the GHB form)

produced similar results to those obtained using all geographic forms together, making us confident that our conclusions are fairly robust to deviations from panmixia due to population structure, at least for that species. Second, we assumed similar generation times for the three species, while these have different social structures and population densities, that may influence this parameter. For example, cooperative breeding has been reported in Reunion and Mauritius Grey White-eyes (Gill, 1973; Hansen et al., 2002) that may delay first reproduction and overall increase generation time (Kreider et al., 2022). However, we note that the results from PSMC analyses did not change substantially after varying both mutation rate and generation time, suggesting that our results are also robust, to some extent, to variations in these parameters. Third, we only considered models with up to two populations since the framework that we used (DILS; Fraïsse et al., 2021), while fast and malleable, only works with two populations at most. We tried using the Fastsimcoal modelling approach (Excoffier et al., 2013) as an alternative but when compared to DILS, it yielded unrealistic results with very poor fits to the data (results not shown). In addition, Fastsimcoal does not allow for N_e and N_m heterogeneity along the genome, which can lead to inaccurate demographic inferences while DILS parametrizes this heterogeneity. Our ABC analyses indeed unconditionally support N_e heterogeneity along the genome (posterior probabilities of 0.99 for all the species, Table S4) indicating that accounting for this factor may be critical in demographic inference based on whole-genome sequence data. While strong signals of expansion were detected in our ABC demographic inferences, we cannot really rule out the possibility that bottlenecks occurred over the course of the species' population histories. More complex ABC models including several waves of demographic changes would be necessary to properly address this, but current ABC approaches may not be powerful enough to detect ancient and subtle population size changes. However, PSMC analyses, which account for the possibility of multiple population size changes across time, do not suggest many demographic changes, but are rather consistent with a general strong expansion.

To conclude, the shared population histories in the Reunion Grey and Olive White-eyes and their contrast with the Mauritius Grey White-eye population history suggest that, in this system and at a relatively small spatial scale, local events may have been important drivers of population trajectories. Using more species from Reunion and Mauritius will be necessary to further validate whether the differences in demographic trajectories that we recovered are general. As white-eyes could be more resilient to environmental changes than other species groups, the use of other species, with different ecologies or being less behaviourally plastic, could yield different population trajectories in response to both local and regional events. More importantly, investigating the demographic history of multiple species from a range of taxa in several archipelagos by comparing species living on the same or different islands and controlling for their evolutionary relatedness, as recently advocated by Cerca et al. (2023) for another purpose, would greatly help understanding

how species respond to local and regional events of ecological disruption and would provide a useful tool for assessing the impacts and risks of plausible future human-driven changes in climate.

AUTHOR CONTRIBUTIONS

B.M. and C.T. initiated and coordinated the project. M.G., B.N., B.M. and C.T. conceived the study and designed the experiments. B.M. and C.T. conducted the fieldwork, with the assistance of M.G., T.L. and B.N. M.G. performed the analyses. M.G., T.L., J.S., B.N., B.M. and C.T. interpreted the analyses and wrote the manuscript.

ACKNOWLEDGEMENTS

We thank two anonymous reviewers and Sonya Clegg for their reviews of our manuscript and their suggestions towards improving the work. We also thank Thomas Duval, Jennifer Devillechabrolle, Guillaume Gélinaud, Marie Manceau, Juli Broggi, Josselin Cornuault, Yann Bourgeois, Joris Bertrand, Boris Delahaie, Dominique Strasberg, Philipp Heeb, René-Claude Billot, Ben Warren and Jean-Michel Probst for their assistance in the field in Reunion and Mauritius; Reunion National Park and Mauritius National Parks and Conservation Service for granting us permission to conduct fieldwork in protected areas of Reunion and Mauritius respectively; Benoit Lequette (Reunion National Park) and Vikash Tatayah (Mauritius Wildlife Foundation) for facilitating permit collection. We thank Hélène Holota, Uxue Suescun and Amaya Iribar-Pelozuelo for their help with the laboratory work; Lounès Chikhi for stimulating discussions on population structure and demographic inferences; Camille Roux for his valuable advice on the use of DILS for demographic inferences; the IFB cluster and Genotoul bioinformatics platform for the computational resources they provided and in particular Marie-Stéphane Trotard for bioinformatics support. We are also grateful to Stanislav Harvančík, Simon Colenutt and Hilary Jones for allowing us to reproduce their photos of white-eyes.

FUNDING INFORMATION

This work was supported by the Agence Française pour le Développement, The National Geographic Society, the Fondation pour la Recherche sur la Biodiversité, the 'Laboratoire d'Excellence' TULIP (ANR-10-LABX-41), an ANR grant (BirdIslandGenomic project, ANR-14-CE02-0002) to B.N., a PEPS grant from CNRS, a PhD studentship from the Ministère de l'Enseignement Supérieur et de la Recherche and a grant from the Fonds Inkermann and François Lacoste to M.G. Logistic support on Reunion was provided by the Marelongue field station run by the University of Reunion and the Observatoire des Sciences de l'Univers de La Réunion.

CONFLICT OF INTEREST STATEMENT

The authors declare no conflict of interest.

DATA AVAILABILITY STATEMENT

Data sharing is not applicable to this article as no new data were created or analyzed in this study.

DATA ACCESSIBILITY AND BENEFIT-SHARING

Raw sequence reads of whole genomes are deposited in the SRA (BioProject PRJNA661201 and PRJEB18566). See Table S2 for accession codes of all the samples used in this study.

ORCID

Maëva Gabrielli  <https://orcid.org/0000-0002-6507-7215>

Thibault Leroy  <https://orcid.org/0000-0003-2259-9723>

Jordi Salmons  <https://orcid.org/0000-0002-1950-5805>

Benoit Nabholz  <https://orcid.org/0000-0003-0447-1451>

Borja Milá  <https://orcid.org/0000-0002-6446-0079>

Christophe Thébaud  <https://orcid.org/0000-0002-8586-1234>

REFERENCES

- Barrows, T. T., & Juggins, S. (2005). Sea-surface temperatures around the Australian margin and Indian Ocean during the last glacial maximum. *Quaternary Science Reviews*, 24(7), 1017–1047. <https://doi.org/10.1016/j.quascirev.2004.07.020>
- Beaumont, M. A., Zhang, W., & Balding, D. J. (2002). Approximate Bayesian computation in population genetics. *Genetics*, 162(4), 2025–2035.
- Bemmels, J. B., Haddrath, O., Colbourne, R. M., Robertson, H. A., & Weir, J. T. (2022). Legacy of supervolcanic eruptions on population genetic structure of brown kiwi. *Current Biology*, 32(15), 3389–3397. <https://doi.org/10.1016/j.cub.2022.05.064>
- Bertrand, J., Bourgeois, Y. X. C., Delahaie, B., Duval, T., García-Jiménez, R., Cornuault, J., Heeb, P., Milá, B., Pujol, B., & Thébaud, C. (2014). Extremely reduced dispersal and gene flow in an Island bird. *Heredity*, 112(2), 190–196. <https://doi.org/10.1038/hdy.2013.91>
- Bertrand, J., Delahaie, B., Bourgeois, Y. X. C., Duval, T., García-Jiménez, R., Cornuault, J., Pujol, B., Thébaud, C., & Milá, B. (2016). The role of selection and historical factors in driving population differentiation along an elevational gradient in an Island bird. *Journal of Evolutionary Biology*, 29(4), 824–836. <https://doi.org/10.1111/jeb.12829>
- Booth, R. K., Jackson, S. T., Forman, S. L., Kutzbach, J. E., Bettis, E. A., III, Kreigs, J., & Wright, D. K. (2005). A severe centennial-scale drought in midcontinental North America 4200 years ago and apparent global linkages. *The Holocene*, 15(3), 321–328. <https://doi.org/10.1191/0959683605hl825ft>
- Bourgeois, Y. X. C., Delahaie, B., Gautier, M., Lhuillier, E., Malé, P.-J. G., Bertrand, J. A. M., Cornuault, J., Wakamatsu, K., Bouchez, O., Mould, C., Bruxaux, J., Holota, H., Milá, B., & Thébaud, C. (2017). A novel locus on chromosome 1 underlies the evolution of a melanistic plumage polymorphism in a wild songbird. *Royal Society Open Science*, 4(2), 160805. <https://doi.org/10.1098/rsos.160805>
- Cai, T., Cibois, A., Alström, P., Moyle, R. G., Kennedy, J. D., Shao, S., Zhang, R., Irestedt, M., Ericson, P. G. P., Gelang, M., Qu, Y., Lei, F., & Fjeldså, J. (2019). Near-complete phylogeny and taxonomic revision of the world's babblers (Aves: Passeriformes). *Molecular Phylogenetics and Evolution*, 130, 346–356. <https://doi.org/10.1016/j.ympev.2018.10.010>
- Carnaval, A. C., & Moritz, C. (2008). Historical climate modelling predicts patterns of current biodiversity in the Brazilian Atlantic forest. *Journal of Biogeography*, 35(7), 1187–1201. <https://doi.org/10.1111/j.1365-2699.2007.01870.x>
- Castellanos Melendez, M. P., Di Muro, A., Laurent, O., Kuiper, K., Wijbrans, J. R., & Bachmann, O. (2023). Explosive volcanism of piton des Neiges (Reunion Island) and excess age dispersion in sanidine: Insights into magma chamber processes in a hotspot setting. *Chemical Geology*, 632, 121539. <https://doi.org/10.1016/j.chemgeo.2023.121539>
- Cerca, J., Cotoras, D. D., Bieker, V. C., De-Kayne, R., Vargas, P., Fernández-Mazuecos, M., López-Delgado, J., White, O., Stervander, M., Geneva, A. J., Andino, J. E. G., Meier, J. I., Roebler, L., Brée, B., Patiño, J., Guayasamin, J. M., Torres, M. D. L., Valdebenito, H., Castañeda, M. D. R., ... Martin, M. D. (2023). Evolutionary genomics of oceanic Island radiations. *Trends in Ecology & Evolution*, 38(7), 631–642. <https://doi.org/10.1016/j.tree.2023.02.003>
- Chattopadhyay, B., Garg, K. M., Ray, R., & Rheindt, F. E. (2019). Fluctuating fortunes: Genomes and habitat reconstructions reveal global climate-mediated changes in bats' genetic diversity. *Proceedings of the Royal Society B: Biological Sciences*, 286(1911), 20190304. <https://doi.org/10.1098/rspb.2019.0304>
- Cheke, A., & Hume, J. P. (2010). *Lost land of the dodo: The ecological history of Mauritius*. Bloomsbury Publishing.
- Cheke, A. S. (1987). The ecology of the surviving native land-birds of Réunion. In A. W. Diamond (Ed.), *Studies of Mascarene Island birds* (pp. 301–358). Cambridge University Press. <https://doi.org/10.1017/CBO9780511735769>
- Chikhi, L., Rodríguez, W., Grusea, S., Santos, P., Boitard, S., & Mazet, O. (2018). The IICR (inverse instantaneous coalescence rate) as a summary of genomic diversity: Insights into demographic inference and model choice. *Heredity*, 120(1), 13–24. <https://doi.org/10.1038/s41437-017-0005-6>
- Clegg, S. M., Degnan, S. M., Kikkawa, J., Moritz, C., Estoup, A., & Owens, I. P. F. (2002). Genetic consequences of sequential founder events by an Island-colonizing bird. *Proceedings of the National Academy of Sciences*, 99(12), Article 12–Article 8132. <https://doi.org/10.1073/pnas.102583399>
- Cornetti, L., Valente, L. M., Dunning, L. T., Quan, X., Black, R. A., Hebert, O., & Savolainen, V. (2015). The genome of the "great speciator" provides insights into bird diversification. *Genome Biology and Evolution*, 7(9), 2680–2691. <https://doi.org/10.1093/gbe/evv168>
- Cornuault, J., Delahaie, B., Bertrand, J. A., Bourgeois, Y. X., Milá, B., Heeb, P., & Thébaud, C. (2015). Morphological and plumage colour variation in the Réunion grey white-eye (Aves: *Zosterops borbonicus*): Assessing the role of selection. *Biological Journal of the Linnean Society*, 114(2), 459–473. <https://doi.org/10.1111/bij.12428>
- de Boer, E. J., Vélez, M. I., Rijdsdijk, K. F., de Louw, P. G., Vernimmen, T. J., Visser, P. M., Tjallingii, R., & Hooghiemstra, H. (2015). A deadly cocktail: How a drought around 4200 cal. yr BP caused mass mortality events at the infamous 'dodo swamp' in Mauritius. *The Holocene*, 25(5), 758–771. <https://doi.org/10.1177/0959683614567886>
- Dornelas, M. (2010). Disturbance and change in biodiversity. *Philosophical Transactions of the Royal Society B: Biological Sciences*, 365(1558), 3719–3727. <https://doi.org/10.1098/rstb.2010.0295>
- Duncan, R. A. (2009). Mascarene Islands, geology. In *Encyclopedia of islands* (pp. 620–622). University of California Press.
- Emerson, B. C., Paradis, E., & Thébaud, C. (2001). Revealing the demographic histories of species using DNA sequences. *Trends in Ecology & Evolution*, 16(12), 707–716. [https://doi.org/10.1016/S0169-5347\(01\)02305-9](https://doi.org/10.1016/S0169-5347(01)02305-9)
- Estoup, A., & Clegg, S. M. (2003). Bayesian inferences on the recent Island colonization history by the bird *Zosterops lateralis lateralis*. *Molecular Ecology*, 12(3), 657–674. <https://doi.org/10.1046/j.1365-294X.2003.01761.x>
- Excoffier, L., Dupanloup, I., Huerta-Sánchez, E., Sousa, V. C., & Foll, M. (2013). Robust demographic inference from genomic and SNP data. *PLoS Genetics*, 9(10), e1003905. <https://doi.org/10.1371/journal.pgen.1003905>
- Fernández-Palacios, J. M., de Nascimento, L., Otto, R., Delgado, J. D., García-del-Rey, E., Arévalo, J. R., & Whittaker, R. J. (2011). A reconstruction of Palaeo-Macaronesia, with particular reference to the long-term biogeography of the Atlantic Island laurel forests. *Journal*

- of *Biogeography*, 38(2), 226–246. <https://doi.org/10.1111/j.1365-2699.2010.02427.x>
- Fernández-Palacios, J. M., Rijdsdijk, K. F., Norder, S. J., Otto, R., Nascimento, L., Fernández-Lugo, S., Tjørve, E., Whittaker, R. J., & Santos, A. (2016). Towards a glacial-sensitive model of Island biogeography. *Global Ecology and Biogeography*, 25(7), 817–830. <https://doi.org/10.1111/geb.12320>
- Fraïsse, C., Popovic, I., Mazoyer, C., Spataro, B., Delmotte, S., Romiguier, J., Loire, É., Simon, A., Galtier, N., Duret, L., Bierne, N., Vekemans, X., & Roux, C. (2021). DILS: Demographic inferences with linked selection by using ABC. *Molecular Ecology Resources*, 21(8), 2629–2644. <https://doi.org/10.1111/1755-0998.13323>
- Fretzdorff, S., Paterne, M., Stoffers, P., & Ivanova, E. (2000). Explosive activity of the Reunion Island volcanoes through the past 260,000 years as recorded in deep-sea sediments. *Bulletin of Volcanology*, 62(4), 266–277. <https://doi.org/10.1007/s004450000095>
- Gabrielli, M., Nabholz, B., Leroy, T., Milá, B., & Thébaud, C. (2020). Within-Island diversification in a passerine bird. *Proceedings of the Royal Society B: Biological Sciences*, 287(1923), 20192999. <https://doi.org/10.1098/rspb.2019.2999>
- Garot, E., Joët, T., Combes, M., Severac, D., & Lashermes, P. (2019). Plant population dynamics on oceanic islands during the late quaternary climate changes: Genetic evidence from a tree species (*Coffea mauritiana*) in Reunion Island. *New Phytologist*, 224(2), 974–986. <https://doi.org/10.1111/nph.16052>
- Gasse, F., & Van Campo, E. (2001). Late quaternary environmental changes from a pollen and diatom record in the southern tropics (Lake Tritrivalakely, Madagascar). *Palaeogeography, Palaeoclimatology, Palaeoecology*, 167(3), 287–308. [https://doi.org/10.1016/S0031-0182\(00\)00242-X](https://doi.org/10.1016/S0031-0182(00)00242-X)
- Germain, R. R., Feng, S., Chen, G., Graves, G. R., Tobias, J. A., Rahbek, C., Lei, F., Fjeldsø, J., Hosner, P. A., Gilbert, M. T. P., Zhang, G., & Nogués-Bravo, D. (2023). Species-specific traits mediate avian demographic responses under past climate change. *Nature Ecology & Evolution*, 7(6), 862–872. <https://doi.org/10.1038/s41559-023-02055-3>
- Gill, F. (1973). Intra-Island variation in the Mascarene white-eye *Zosterops Borbonica*. In *Ornithological Monographs* (pp. 1–66). American Ornithological Society.
- Grusea, S., Rodríguez, W., Pinchon, D., Chikhi, L., Boitard, S., & Mazet, O. (2019). Coalescence times for three genes provide sufficient information to distinguish population structure from population size changes. *Journal of Mathematical Biology*, 78(1), 189–224. <https://doi.org/10.1007/s00285-018-1272-4>
- Hansen, D. M., Olesen, J. M., & Jones, C. G. (2002). Trees, birds and bees in Mauritius: Exploitative competition between introduced honey bees and endemic nectarivorous birds? *Journal of Biogeography*, 29(5–6), 721–734. <https://doi.org/10.1046/j.1365-2699.2002.00720.x>
- Harter, D. E. V., Irl, S. D. H., Seo, B., Steinbauer, M. J., Gillespie, R., Triantis, K. A., Fernández-Palacios, J.-M., & Beierkuhnlein, C. (2015). Impacts of global climate change on the floras of oceanic islands – Projections, implications and current knowledge. *Perspectives in Plant Ecology, Evolution and Systematics*, 17(2), 160–183. <https://doi.org/10.1016/j.ppees.2015.01.003>
- Heller, R., Lorenzen, E. D., Okello, J. B. A., Masembe, C., & Siegmund, H. R. (2008). Mid-Holocene decline in African buffalos inferred from Bayesian coalescent-based analyses of microsatellites and mitochondrial DNA. *Molecular Ecology*, 17(22), 4845–4858. <https://doi.org/10.1111/j.1365-294X.2008.03961.x>
- Hewitt, G. (2000). The genetic legacy of the quaternary ice ages. *Nature*, 405(6789), 907–913. <https://doi.org/10.1038/35016000>
- Jombart, T. (2008). Adegnet: A R package for the multivariate analysis of genetic markers. *Bioinformatics (Oxford, England)*, 24(11), 1403–1405. <https://doi.org/10.1093/bioinformatics/btn129>
- Kawakami, T., Smeds, L., Backström, N., Husby, A., Qvarnström, A., Mugal, C. F., Olason, P., & Ellegren, H. (2014). A high-density linkage map enables a second-generation collared flycatcher genome assembly and reveals the patterns of avian recombination rate variation and chromosomal evolution. *Molecular Ecology*, 23(16), 4035–4058. <https://doi.org/10.1111/mec.12810>
- Kreider, J. J., Kramer, B. H., Komdeur, J., & Pen, I. (2022). The evolution of ageing in cooperative breeders. *Evolution Letters*, 6(6), 450–459. <https://doi.org/10.1002/evl3.307>
- Lamichhane, S., Berglund, J., Almén, M. S., Maqbool, K., Grabherr, M., Martinez-Barrio, A., Promerová, M., Rubin, C.-J., Wang, C., Zamani, N., Grant, B. R., Grant, P. R., Webster, M. T., & Andersson, L. (2015). Evolution of Darwin's finches and their beaks revealed by genome sequencing. *Nature*, 518(7539), 371–375. <https://doi.org/10.1038/nature14181>
- Leroy, T., Anselmetti, Y., Tilak, M.-K., Bérard, S., Csukonyi, L., Gabrielli, M., Scornavacca, C., Milá, B., Thébaud, C., & Nabholz, B. (2021). A bird's white-eye view on avian sex chromosome evolution. *Peer Community Journal*, 1, e63. <https://doi.org/10.24072/pcjournal.70>
- Leroy, T., Rousselle, M., Tilak, M.-K., Caizergues, A. E., Scornavacca, C., Recuerda, M., Fuchs, J., Illera, J. C., De Swardt, D. H., Blanco, G., Thébaud, C., Milá, B., & Nabholz, B. (2021). Island songbirds as windows into evolution in small populations. *Current Biology*, 31(6), 1303–1310.e4. <https://doi.org/10.1016/j.cub.2020.12.040>
- Leung, B., Hargreaves, A. L., Greenberg, D. A., McGill, B., Dornelas, M., & Freeman, R. (2020). Clustered versus catastrophic global vertebrate declines. *Nature*, 588(7837), 267–271. <https://doi.org/10.1038/s41586-020-2920-6>
- Li, H., & Durbin, R. (2009). Fast and accurate short read alignment with burrows-wheeler transform. *Bioinformatics*, 25(14), 1754–1760. <https://doi.org/10.1093/bioinformatics/btp324>
- Li, H., & Durbin, R. (2011). Inference of human population history from individual whole-genome sequences. *Nature*, 475(7357), 493–496. <https://doi.org/10.1038/nature10231>
- Losos, J. B., & Ricklefs, R. E. (2009). Adaptation and diversification on islands. *Nature*, 457, 830–836. <https://doi.org/10.1038/nature07893>
- Maldonado-Coelho, M. (2012). Climatic oscillations shape the phylogeographical structure of Atlantic Forest fire-eye antbirds (Aves: Thamnophilidae). *Biological Journal of the Linnean Society*, 105(4), 900–924. <https://doi.org/10.1111/j.1095-8312.2011.01823.x>
- Marchant, R., & Hooghiemstra, H. (2004). Rapid environmental change in African and south American tropics around 4000 years before present: A review. *Earth-Science Reviews*, 66(3), 217–260. <https://doi.org/10.1016/j.earscirev.2004.01.003>
- Martin, C. A., Armstrong, C., Illera, J. C., Emerson, B. C., Richardson, D. S., & Spurgin, L. G. (2021). Genomic variation, population history and within-archipelago adaptation between Island bird populations. *Royal Society Open Science*, 8(2), 201146. <https://doi.org/10.1098/rsos.201146>
- Martins, F. C., Cox, S. C., Irestedt, M., Prýs-Jones, R. P., & Day, J. J. (2020). A comprehensive molecular phylogeny of Afrotropical white-eyes (Aves: Zosteropidae) highlights prior underestimation of mainland diversity and complex colonisation history. *Molecular Phylogenetics and Evolution*, 149, 106843. <https://doi.org/10.1016/j.ympev.2020.106843>
- Maruyama, T., & Fuerst, P. A. (1985). Population bottlenecks and non-equilibrium models in population genetics. III. Genic homozygosity in populations which experience periodic bottlenecks. *Genetics*, 111(3), 691–703. <https://doi.org/10.1093/genetics/111.3.691>
- Mastretta-Yanes, A., Moreno-Letelier, A., Piñero, D., Jorgensen, T. H., & Emerson, B. C. (2015). Biodiversity in the Mexican highlands and the interaction of geology, geography and climate within the trans-Mexican Volcanic Belt. *Journal of Biogeography*, 42(9), 1586–1600. <https://doi.org/10.1111/jbi.12546>
- Mazet, O., Rodríguez, W., Grusea, S., Boitard, S., & Chikhi, L. (2016). On the importance of being structured: Instantaneous coalescence

- rates and human evolution—Lessons for ancestral population size inference? *Heredity*, 116(4), 362–371. <https://doi.org/10.1038/hdy.2015.104>
- McKenna, A., Hanna, M., Banks, E., Sivachenko, A., Cibulskis, K., Kerynsky, A., Garimella, K., Altshuler, D., Gabriel, S., Daly, M., & DePristo, M. A. (2010). The genome analysis toolkit: A MapReduce framework for analyzing next-generation DNA sequencing data. *Genome Research*, 20(9), 1297–1303. <https://doi.org/10.1101/gr.107524.110>
- Milá, B., Warren, B. H., Heeb, P., & Thébaud, C. (2010). The geographic scale of diversification on islands: Genetic and morphological divergence at a very small spatial scale in the Mascarene grey white-eye (*Aves: Zosterops borbonicus*). *BMC Evolutionary Biology*, 10, 158. <https://doi.org/10.1186/1471-2148-10-158>
- Moore, J., White, W., Paul, D., Duncan, R., Abouchami, W., & Galer, S. (2011). Evolution of shield-building and rejuvenescent volcanism of Mauritius. *Journal of Volcanology and Geothermal Research*, 207, 47–66. <https://doi.org/10.1016/j.jvolgeores.2011.07.005>
- Moyle, R. G., Filardi, C. E., Smith, C. E., & Diamond, J. (2009). Explosive Pleistocene diversification and hemispheric expansion of a “great speciator”. *Proceedings of the National Academy of Sciences*, 106(6), 1863–1868. <https://doi.org/10.1073/pnas.0809861105>
- Nadachowska-Brzyska, K., Burri, R., Smeds, L., & Ellegren, H. (2016). PSMC analysis of effective population sizes in molecular ecology and its application to black-and-white *Ficedula* flycatchers. *Molecular Ecology*, 25(5), 1058–1072. <https://doi.org/10.1111/mec.13540>
- Nadachowska-Brzyska, K., Li, C., Smeds, L., Zhang, G., & Ellegren, H. (2015). Temporal dynamics of avian populations during Pleistocene revealed by whole-genome sequences. *Current Biology*, 25(10), 1375–1380. <https://doi.org/10.1016/j.cub.2015.03.047>
- Nei, M., & Li, W.-H. (1979). Mathematical model for studying genetic variation in terms of restriction endonucleases. *Proceedings of the National Academy of Sciences of the United States of America*, 76(10), 5269–5273. <https://doi.org/10.1073/pnas.76.10.5269>
- Nei, M., Maruyama, T., & Chakraborty, R. (1975). The bottleneck effect and genetic variability in populations. *Evolution*, 29(1), 1–10. <https://doi.org/10.2307/2407137>
- Nogués-Bravo, D., Rodríguez-Sánchez, F., Orsini, L., de Boer, E., Jansson, R., Morlon, H., Fordham, D. A., & Jackson, S. T. (2018). Cracking the code of biodiversity responses to past climate change. *Trends in Ecology & Evolution*, 33(10), 765–776. <https://doi.org/10.1016/j.tree.2018.07.005>
- Norder, S. J., Baumgartner, J. B., Borges, P. A. V., Hengl, T., Kissling, W. D., van Loon, E. E., & Rijdsdijk, K. F. (2018). A global spatially explicit database of changes in Island palaeo-area and archipelago configuration during the late quaternary. *Global Ecology and Biogeography*, 27(5), 500–505. <https://doi.org/10.1111/geb.12715>
- Patton, A. H., Margres, M. J., Stahlke, A. R., Hendricks, S., Lewallen, K., Hamede, R. K., Ruiz-Aravena, M., Ryder, O., McCallum, H. I., Jones, M. E., Hohenlohe, P. A., & Storfer, A. (2019). Contemporary demographic reconstruction methods are robust to genome assembly quality: A case study in Tasmanian devils. *Molecular Biology and Evolution*, 36(12), 2906–2921. <https://doi.org/10.1093/molbev/msz191>
- Purcell, S., Neale, B., Todd-Brown, K., Thomas, L., Ferreira, M. A. R., Bender, D., Maller, J., Sklar, P., de Bakker, P. I. W., Daly, M. J., & Sham, P. C. (2007). PLINK: A tool set for whole-genome association and population-based linkage analyses. *The American Journal of Human Genetics*, 81(3), 559–575. <https://doi.org/10.1086/519795>
- R Core Team. (2020). *R: A language and environment for statistical computing*. R Foundation for Statistical Computing.
- Rijdsdijk, K. F., Zinke, J., de Louw, P. G. B., Hume, J. P., van der Plicht, H. J., Hooghiemstra, H., Meijer, H. J. M., Vonhof, H. B., Porch, N., Florens, F. B. V., Baider, C., van Geel, B., Brinkkemper, J., Vernimmen, T., & Janoo, A. (2011). Mid-Holocene (4200 kyr BP) mass mortalities in Mauritius (Mascarenes): Insular vertebrates resilient to climatic extremes but vulnerable to human impact. *The Holocene*, 21(8), 1179–1194. <https://doi.org/10.1177/0959683611405236>
- Rodríguez, W., Mazet, O., Grusea, S., Arredondo, A., Corujo, J. M., Boitard, S., & Chikhi, L. (2018). The IICR and the non-stationary structured coalescent: Towards demographic inference with arbitrary changes in population structure. *Heredity*, 121(6), 663–678. <https://doi.org/10.1038/s41437-018-0148-0>
- Salces-Castellano, A., Stankowski, S., Arribas, P., Patiño, J., Karger, D. N., Butlin, R., & Emerson, B. C. (2021). Long-term cloud forest response to climate warming revealed by insect speciation history. *Evolution*, 75(2), 231–244. <https://doi.org/10.1111/evo.14111>
- Salmona, J., Heller, R., Lascoux, M., & Shafer, A. B. A. (2017). Inferring demographic history using genomic data. In *Population genomics: Concepts, approaches and applications* (pp. 511–537). Springer.
- Salmona, J., Heller, R., Quéméré, E., & Chikhi, L. (2017). Climate change and human colonization triggered habitat loss and fragmentation in Madagascar. *Molecular Ecology*, 26(19), 5203–5222. <https://doi.org/10.1111/mec.14173>
- Salmona, J., Salamolard, M., Fouillot, D., Ghestemme, T., Larose, J., Centon, J.-F., Sousa, V., Dawson, D. A., Thebaud, C., & Chikhi, L. (2012). Signature of a pre-human population decline in the critically endangered Reunion Island endemic Forest bird *Coracina newtoni*. *PLoS One*, 7(8), e43524. <https://doi.org/10.1371/journal.pone.0043524>
- Schiffels, S., & Durbin, R. (2014). Inferring human population size and separation history from multiple genome sequences. *Nature Genetics*, 46(8), 919–925. <https://doi.org/10.1038/ng.3015>
- Singhal, S., Leffler, E. M., Sannareddy, K., Turner, I., Venn, O., Hooper, D. M., Strand, A. I., Li, Q., Raney, B., Balakrishnan, C. N., Griffith, S. C., McVean, G., & Przeworski, M. (2015). Stable recombination hotspots in birds. *Science*, 350(6263), 928–932. <https://doi.org/10.1126/science.aad0843>
- Smeds, L., Qvarnström, A., & Ellegren, H. (2016). Direct estimate of the rate of germline mutation in a bird. *Genome Research*, 26(9), 1211–1218. <https://doi.org/10.1101/gr.204669.116>
- Staubwasser, M., Sirocko, F., Grootes, P. M., & Segl, M. (2003). Climate change at the 4.2 ka BP termination of the Indus valley civilization and Holocene south Asian monsoon variability. *Geophysical Research Letters*, 30(8), 1425–1432. <https://doi.org/10.1029/2002GL016822>
- Tajima, F. (1983). Evolutionary relationship of DNA sequences in finite populations. *Genetics*, 105(2), 437–460. <https://doi.org/10.1093/genetics/105.2.437>
- Tajima, F. (1989). Statistical method for testing the neutral mutation hypothesis by DNA polymorphism. *Genetics*, 123(3), 585–595. <https://doi.org/10.1093/genetics/123.3.585>
- Terhorst, J., Kamm, J. A., & Song, Y. S. (2017). Robust and scalable inference of population history from hundreds of unphased whole-genomes. *Nature Genetics*, 49(2), 303–309. <https://doi.org/10.1038/ng.3748>
- Thébaud, C., Warren, B. H., Cheke, A., & Strasberg, D. (2009). Mascarene Islands, biology. In *Encyclopedia of islands* (pp. 612–619). University of California Press.
- Thompson, L. G. (2002). Kilimanjaro ice Core records: Evidence of Holocene climate change in tropical Africa. *Science*, 298, 589–593. <https://doi.org/10.1126/science.1073198>
- Urban, M. C., Bodedi, G., Hendry, A. P., Mihoub, J.-B., Pe'er, G., Singer, A., Bridle, J. R., Crozier, L. G., De Meester, L., Godsoe, W., Gonzalez, A., Hellmann, J. J., Holt, R. D., Huth, A., Johst, K., Krug, C. B., Leadley, P. W., Palmer, S. C. F., Pantel, J. H., ... Travis, J. M. J. (2016). Improving the forecast for biodiversity under climate change. *Science*, 353(6304), ead8466. <https://doi.org/10.1126/science.aad8466>
- Wakeley, J. (1999). Nonequilibrium migration in human history. *Genetics*, 153(4), 1863–1871.

- Warren, B. H., Bermingham, E., Prys-Jones, R. P., & Thébaud, C. (2006). Immigration, species radiation and extinction in a highly diverse songbird lineage: White-eyes on Indian Ocean islands. *Molecular Ecology*, 15(12), 3769–3786. <https://doi.org/10.1111/j.1365-294X.2006.03058.x>
- Warren, B. H., Simberloff, D., Ricklefs, R. E., Aguilée, R., Condamine, F. L., Gravel, D., Morlon, H., Mouquet, N., Rosindell, J., Casquet, J., Conti, E., Cornuault, J., Fernández-Palacios, J. M., Hengl, T., Norder, S. J., Rijdsdijk, K. F., Sanmartín, I., Strasberg, D., Triantis, K. A., ... Thébaud, C. (2015). Islands as model systems in ecology and evolution: Prospects fifty years after MacArthur-Wilson. *Ecology Letters*, 18(2), 200–217. <https://doi.org/10.1111/ele.12398>
- Watterson, G. A. (1975). On the number of segregating sites in genetical models without recombination. *Theoretical Population Biology*, 7(2), 256–276. [https://doi.org/10.1016/0040-5809\(75\)90020-9](https://doi.org/10.1016/0040-5809(75)90020-9)
- Watterson, G. A. (1984). Allele frequencies after a bottleneck. *Theoretical Population Biology*, 26(3), 387–407. [https://doi.org/10.1016/0040-5809\(84\)90042-X](https://doi.org/10.1016/0040-5809(84)90042-X)
- Weigelt, P., & Kreft, H. (2013). Quantifying Island isolation – Insights from global patterns of insular plant species richness. *Ecography*, 36(4), 417–429. <https://doi.org/10.1111/j.1600-0587.2012.07669.x>
- Weir, B. S., & Cockerham, C. C. (1984). Estimating F-statistics for the analysis of population structure. *Evolution*, 38(6), 1358–1370.
- Weir, J. T., & Lawson, A. (2015). Evolutionary rates across gradients. *Methods in Ecology and Evolution*, 6(11), 1278–1286. <https://doi.org/10.1111/2041-210X.12419>
- Whittaker, R. J., Triantis, K. A., & Ladle, R. J. (2008). A general dynamic theory of oceanic Island biogeography. *Journal of Biogeography*, 35(6), 977–994. <https://doi.org/10.1111/j.1365-2699.2008.01892.x>
- Wilder, A. P., Supple, M. A., Subramanian, A., Mudide, A., Swofford, R., Serres-Armero, A., Steiner, C., Koepfli, K.-P., Genereux, D. P., Karlsson, E. K., Lindblad-Toh, K., Marques-Bonet, T., Munoz Fuentes, V., Foley, K., Meyer, W. K., Zoonomia Consortium, Ryder, O. A., & Shapiro, B. (2023). The contribution of historical processes to contemporary extinction risk in placental mammals. *Science*, 380(6643), eabn5856. <https://doi.org/10.1126/science.abn5856>
- Wright, S. (1943). Isolation by distance. *Genetics*, 28(2), 114–138.
- Yan, M., Wang, B., & Liu, J. (2016). Global monsoon change during the last glacial maximum: A multi-model study. *Climate Dynamics*, 47(1), 359–374. <https://doi.org/10.1007/s00382-015-2841-5>

SUPPORTING INFORMATION

Additional supporting information can be found online in the Supporting Information section at the end of this article.

How to cite this article: Gabrielli, M., Leroy, T., Salmona, J., Nabholz, B., Milá, B., & Thébaud, C. (2024). Demographic responses of oceanic island birds to local and regional ecological disruptions revealed by whole-genome sequencing. *Molecular Ecology*, 33, e17243. <https://doi.org/10.1111/mec.17243>