

Cradles and museums of generic plant diversity across tropical Africa

Léo-Paul M. J. Dagallier^{1*} , Steven B. Janssens^{2*} , Gilles Dauby³ , Anne Blach-Overgaard^{4,5} , Barbara A. Mackinder⁶ , Vincent Droissart³ , Jens-Christian Svenning^{4,5} , Marc S. M. Sosef² , Tariq Stévant^{2,7,8}, David J. Harris⁶ , Bonaventure Sonké⁹ , Jan J. Wieringa¹⁰ , Olivier J. Hardy¹¹  and Thomas L. P. Couvreur^{1,10} 

¹DIADe, IRD, University of Montpellier, 911 Avenue Agropolis, 34394, Montpellier, France; ²Meise Botanic Garden, Nieuwelaan 38, BE-1860, Meise, Belgium; ³AMAP, IRD, CIRAD, CNRS, INRA, University of Montpellier, Bd de la Lironde, 34398, Montpellier, France; ⁴Center for Biodiversity Dynamics in a Changing World (BIOCHANGE), Department of Bioscience, Aarhus University, Ny Munkegade 114, DK-8000, Aarhus C, Denmark; ⁵Section for Ecoinformatics and Biodiversity, Department of Bioscience, Aarhus University, Ny Munkegade 114, DK-8000, Aarhus C, Denmark; ⁶Royal Botanic Garden Edinburgh, 20A Inverleith Row, Edinburgh, EH3 5LR, UK; ⁷Herbarium et Bibliothèque de Botanique Africaine, Université Libre de Bruxelles, Boulevard du Triomphe, B-1050, Bruxelles, Belgium; ⁸Africa & Madagascar Department, Missouri Botanical Garden, St Louis, MO 631109, USA; ⁹Laboratoire de Botanique systématique et d'Écologie, Département des Sciences Biologiques, École Normale Supérieure, Université de Yaoundé I, BP 047, Yaoundé, Cameroon; ¹⁰Naturalis Biodiversity Center, Darwinweg 2, 2333 CR, Leiden, the Netherlands; ¹¹Evolutionary Biology and Ecology, Faculté des Sciences, Université Libre de Bruxelles, Av. F.D. Roosevelt 50, 1050, Brussels, Belgium

Author for correspondence:

Léo-Paul M. J. Dagallier

Tel: + 33 4 67 41 64 74

Email: leo-paul.dagallier@ird.fr

Received: 4 July 2019

Accepted: 20 October 2019

New Phytologist (2020) **225**: 2196–2213

doi: 10.1111/nph.16293

Key words: angiosperms, CANAPE, East Africa, endemism, mountains, phylogenetic diversity, protected areas.

Summary

- Determining where species diversify (cradles) and persist (museums) over evolutionary time is fundamental to understanding the distribution of biodiversity and for conservation prioritization. Here, we identify cradles and museums of angiosperm generic diversity across tropical Africa, one of the most biodiverse regions on Earth.
- Regions containing nonrandom concentrations of young (neo-) and old (paleo-) endemic taxa were identified using distribution data of 1719 genera combined with a newly generated time-calibrated mega-phylogenetic tree. We then compared the identified regions with the current network of African protected areas (PAs).
- At the generic level, phylogenetic diversity and endemism are mainly concentrated in the biogeographically complex region of Eastern Africa. We show that mountainous areas are centres of both neo- and paleo-endemism. By contrast, the Guineo-Congolian lowland rain forest region is characterized by widespread and old lineages. We found that the overlap between centres of phylogenetic endemism and PAs is high (> 85%).
- We show the vital role played by mountains acting simultaneously as cradles and museums of tropical African plant biodiversity. By contrast, lowland rainforests act mainly as museums for generic diversity. Our study shows that incorporating large-scale taxonomically verified distribution datasets and mega-phylogenies lead to an improved understanding of tropical plant biodiversity evolution.

Introduction

Understanding the ecological and evolutionary processes that shape biodiversity is crucial to establishing conservation priorities (McNeely *et al.*, 1990; Myers *et al.*, 2000). Endemic taxa are defined as being geographically restricted and their spatial concentration often highlights evolutionary processes. Traditional methods have mainly focused on using taxonomic diversity (i.e. taxon richness) to depict biodiversity patterns. However, adding the evolutionary history allows a more detailed picture of such patterns (Faith, 1992; Forest *et al.*, 2007). Combining data from phylogenetic trees and taxon diversity enables the calculation of

phylogenetic diversity (PD), that is, the total length of branches of a phylogenetic tree connecting taxa in a particular area (Faith, 1992). Regions with high PD contain important levels of evolutionary history (Sechrest *et al.*, 2002; Forest *et al.*, 2007). Phylogenetic endemism (PE) is the spatial restriction of phylogenetic lineages, that is, the degree to which a part of the evolutionary history is range-restricted (Rosauer *et al.*, 2009). In this context, two types of endemic taxa can be distinguished (Kruckeberg & Rabinowitz, 1985; Nekola, 1999; Ferreira & Boldrini, 2011; Mishler *et al.*, 2014). Neo-endemics are taxa that diverged recently (i.e. sustained by short phylogenetic branches) and whose narrow range is generally linked to a lack of time to disperse and expand. By contrast, paleo-endemics are taxa that diverged much earlier and which are also range-restricted, either

*These authors contributed equally to this work.

because of range reduction or because of a lack of adaptation or dispersal opportunities. Spatial concentrations of neo- or paleo-endemic taxa are referred to as centres of neo-endemism or paleo-endemism, respectively (Fig. 1a,b), and concentrations of both neo- and paleo-endemic taxa are called centres of mixed-endemism (Fig. 1c) (Mishler *et al.*, 2014). Centres of neo-endemism can be viewed as ‘cradles of diversity’, that is, regions with high speciation rates, and are centres of diversification, whereas centres of paleo-endemism can be viewed as ‘museums of diversity’, where taxa have persisted over time. By studying the distribution of endemic taxa together with their evolutionary history, we can generate hypotheses about historical processes that shaped biodiversity (Mishler *et al.*, 2014; Thornhill *et al.*, 2016, 2017; Scherson *et al.*, 2017). Such knowledge is crucial for the improvement of conservation management in the context of an unprecedented biodiversity decline (Humphreys *et al.*, 2019).

Tropical Africa contains some of the most biologically diverse regions of the world (Myers *et al.*, 2000; Linder, 2001; Küper *et al.*, 2004). Although it has lower species diversity when compared with the Neotropics and Southeast Asia, tropical Africa still harbours an estimated 30 000–35 000 species of plants (Couvreur, 2015). High species richness and

centres of taxonomic endemism are found in Cameroon, Gabon, eastern Democratic Republic of the Congo (DRC), and eastern Tanzania (Linder, 2001; Küper *et al.*, 2004; Sosef *et al.*, 2017). Furthermore, Africa contains the second largest continuous tropical rainforest block after the Amazon basin (Malhi *et al.*, 2013). Heterogeneous topography and climate across the continent gave rise to intricate biogeographical patterns forming numerous bioregions and transition zones (White, 1983; Linder *et al.*, 2012; Fayolle *et al.*, 2014; Droissart *et al.*, 2018). Tropical African plant diversity patterns have been relatively well explored by taxonomic approaches (Brenan, 1978; White, 1983; Lovett *et al.*, 2000; Linder, 2001; Küper *et al.*, 2004; Klopffer *et al.*, 2007; Droissart *et al.*, 2018). However, in an evolutionary context our understanding about where diversity originated and where it is maintained is limited.

The lowland rainforests of the Guineo-Congolian region have been suggested to be Pleistocene cradles of diversity (Table 1) with glacial forest refugia triggering speciation (Diamond & Hamilton, 1980; Maley, 1996; Robbrecht, 1996; Sosef, 1996; Huntley & Voelker, 2016). However, molecular dating estimates in several plant and animal clades have shown that many species originated before the start of the Pleistocene, suggesting that forest refugia patterns reflect mainly Pliocene climatic fluctuation (Plana *et al.*, 2004; Voelker *et al.*, 2010). This led to the idea that lowland rainforests are museums of diversity (Table 1, Muriene *et al.*, 2013). In other studies, these lowland regions have been found to be concentrations of old and widespread lineages, especially in birds (Table 1; Fjeldså, 1994; Fjeldså & Lovett, 1997; Fjeldså & Bowie, 2008; Fjeldså *et al.*, 2012).

Cradles of diversity have also been suggested in montane regions of Africa (Table 1), such as the Albertine Rift and the Eastern Arc Mountains (Fjeldså & Lovett, 1997; Roy, 1997; Dimitrov *et al.*, 2012), thereby supporting a ‘montane speciation model’ (Roy, 1997). Indeed, mountains are important centres of global diversification that represent heterogeneous and dynamic landscapes, as well as isolation and reconnection processes that are linked with past climate changes (Peterson *et al.*, 1997; Fjeldså *et al.*, 2012; Hoorn *et al.*, 2013; Antonelli *et al.*, 2018; Muellner-Riehl, 2019). This diversification is the consequence of different mechanisms, for example, fragmented habitats promoting allopatric divergence by isolation of small populations (Hughes & Eastwood, 2006; Schwery *et al.*, 2014; Merckx *et al.*, 2015; see Wen *et al.*, 2014 for a review of all the mechanisms). Mountains have also been acknowledged as museums of diversity as their complex topography supports relatively stable habitats by buffering climatic fluctuations and by allowing the movement of habitats over relatively short altitudinal distances to respond to temperature shifts, and thereby allowing their persistence over long periods of time (Peterson *et al.*, 1997; Fjeldså & Lovett, 1997; Hewitt, 2000; Tzedakis *et al.*, 2002; Loarie *et al.*, 2009; López-Pujol *et al.*, 2011; Tolley *et al.*, 2011). However, studies focusing on bird and few plant clade distributions have identified co-occurrence of neo- and paleo-endemic taxa in African mountain areas (Wasser & Lovett, 1993; Fjeldså & Lovett, 1997;

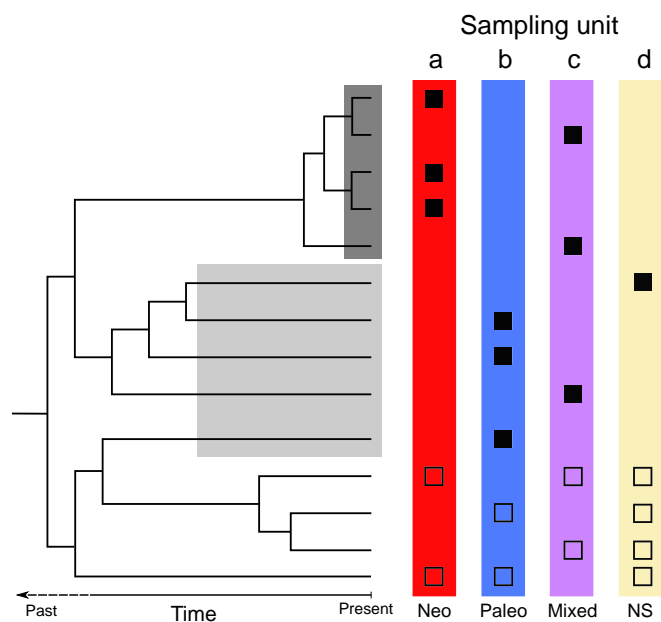


Fig. 1 Theoretical framework for identifying the four categories of phylogenetic endemism based on a phylogenetic tree with branch lengths calibrated in units of time and the distribution of 14 taxa across four sites of equal taxonomic richness. Neo-endemic, endemic taxon sustained by a relatively short branch (highlighted in the dark grey box); paleo-endemic, endemic taxon sustained by a relatively long branch (highlighted in the light grey box). Sampling units are as follows: a, centre of neo-endemism with an over-representation of neo-endemics; b, centre of paleo-endemism with an over-representation of paleo-endemics; c, centre of mixed-endemism with an over-representation of both neo- and paleo-endemics; d, nonsignificant site. Black filled squares, endemic taxon (i.e. present in a relatively low number of sites); unfilled squares, nonendemic taxon (i.e. present in a relatively high number of sites).

Table 1 Hypotheses and categorical analysis of neo- and paleo-endemism (CANAPE) predictions tested across the tropical African angiosperm flora.

| Hypotheses | CANAPE predictions | References |
|--------------------------------------------------------------------------------------------------------|-----------------------------------------------------------------------------------------------------------------------------|-----------------------------------------------------------------------------------------------|
| Lowland rainforests are museums of diversity | Significant concentration of old and range-restricted (paleo-endemics) or old and widespread taxa in lowland rainforest SUs | Fjeldså (1994); Fjeldså & Lovett (1997); Fjeldså & Bowie (2008); Fjeldså <i>et al.</i> (2012) |
| Lowland rainforests are cradles of diversity (past refugia as 'species pump') | Significant concentration of young and range-restricted taxa (neo-endemic) in lowland rainforest SUs | Maley (1996); Sosef (1996); Huntley & Voelker (2016) |
| Montane regions are centres of diversification ('montane speciation model'), i.e. cradles of diversity | Significant concentrations of neo-endemic taxa (centres of neo-endemism) in montane SUs | Roy (1997); Dimitrov <i>et al.</i> (2012); Sch-wery <i>et al.</i> (2014) |
| Montane regions are centres of persistence of lineages, i.e. museums of diversity | Significant concentration of paleo-endemic taxa (centres of paleo-endemism) in montane SUs | Fjeldså & Lovett (1997); López-Pujol <i>et al.</i> (2011); Tolley <i>et al.</i> (2011) |
| Montane regions are centres of both diversification and persistence of lineages | Significant concentration of both paleo- and neo-endemic taxa (centres of mixed-endemism) in montane SUs | Wasser & Lovett (1993); Fjeldså & Lovett (1997); López-Pujol <i>et al.</i> (2011) |

SU, sampling unit (100 km²).

López-Pujol *et al.*, 2011), suggesting that mountains are both cradles and museums of diversity (Fjeldså & Lovett, 1997) (Table 1).

For plants, these hypotheses have not yet been tested using both large distribution datasets and dated molecular phylogenies. Botanical datasets recording African plant distribution information are becoming increasingly comprehensive (Stropp *et al.*, 2016; Dauby *et al.*, 2016) and are significantly improving our understanding of biodiversity and phytogeographical patterns across tropical Africa (Sosef *et al.*, 2017; Droissart *et al.*, 2018). In parallel, the incorporation of evolutionary history information is now possible thanks to the generation of large phylogenies using existing data available on GenBank (Hinchliff & Smith, 2014; Smith & Brown, 2018). Together, this allows us to test the described hypotheses at new levels of precision.

Here, we evaluate five main hypotheses (Table 1) related to the evolutionary and historical processes shaping tropical African biodiversity. We identify significant centres of neo- and paleo-endemism across the entire tropical African angiosperm flora at generic level based on a taxonomically verified distribution dataset and a newly generated mega-phylogeny of angiosperms. At the generic level, we identified areas of significant PD, PE and centres of neo-, paleo- or mixed-endemism across tropical Africa to answer the following questions: do previously identified areas of high taxon diversity display more PD and PE than expected by chance; are African mountains centres of diversification, centres of lineage persistence, or both; are African lowland rainforests museums or cradles of diversity? Finally, as centres of PE are of high conservation interest, we explored the overlap between the protected area network across tropical Africa and the different centres of endemism identified.

Materials and Methods

Study area

Here, tropical Africa is defined by the ecoregions characterized by Olson *et al.* (2001) with the 'south Saharan steppe and woodlands' ecoregion and Mauritania as northern limit and the

'Drakensberg montane grassland', 'Highveld grassland', 'Kalahari Acacia Baikiaea woodland', 'Kalahari xeric savannah' and 'Namibian savannah woodlands' ecoregions as southern limits (Sosef *et al.*, 2017; Droissart *et al.*, 2018). This study includes continental Africa and the Guinean Gulf islands (Bioko, Sao Tomé and Príncipe), but excludes Madagascar (Fig. 2).

Taxonomic level

We conducted this study on tropical African plants at the genus level. This taxonomic level presents advantages and drawbacks. Conceptually, genera should represent clear morphological differences of the flora and older evolutionary events than species, which is the main focus of this study. From a methodological point of view, generic names are comparatively stable taxonomic entities, which circumvent biases as a result of taxonomic uncertainties and potential misidentifications of species (but see Discussion). Moreover, mega-phylogenies are better resolved at the genus than at the species level (Hinchliff & Smith, 2014; Smith & Brown, 2018). Finally, genus-level studies are useful for addressing broad-scale biodiversity patterns (Forest *et al.*, 2007; Thornhill *et al.*, 2016; Scherson *et al.*, 2017). A drawback is that really recent species cradles will be missed by this approach (see Discussion).

Datasets

Plant occurrence data We used the RAINBIO dataset (Dauby *et al.*, 2016), a database of georeferenced occurrences of African vascular plants with comparatively high taxonomic quality. It represents a compilation of 614 022 botanical records collected from 1782 to 2015 providing distribution information for 25 356 species and 3158 genera within 273 families. This represents *c.* 89% of all known tropical African plant species.

Species occurrence data were projected using the Africa Albers Equal Area Conic coordinate reference system (ESRI:102022, <http://spatialreference.org/>). For that, we transformed coordinates from decimal degrees into metres, the base unit of this coordinate reference system. The study area was divided into 100 × 100 km equal-area square sampling units (SUs).

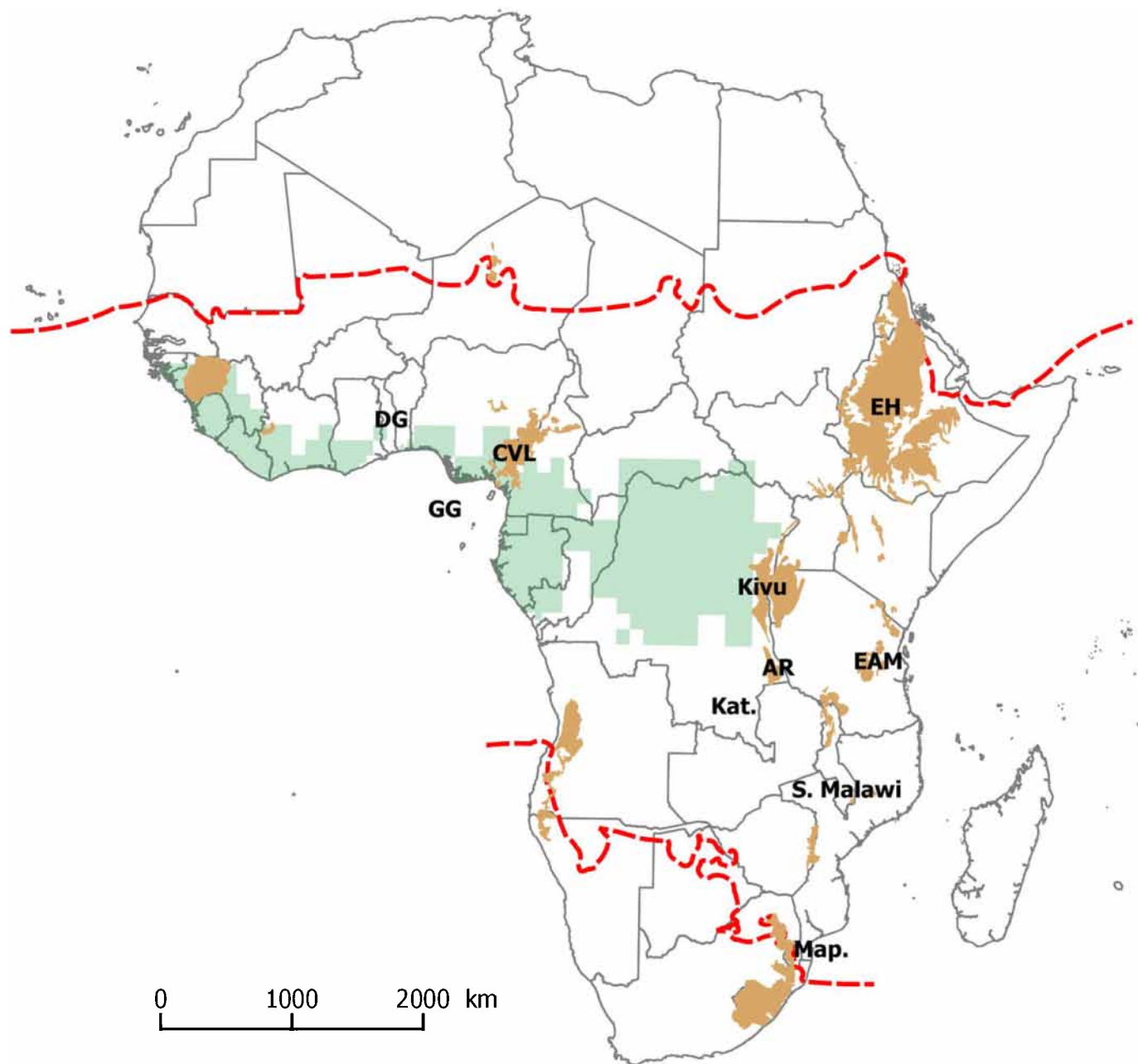


Fig. 2 Map of Africa. The red dotted line delineates the study zone. Green shading delineates the Guineo-Congolian bioregion as defined by Droissart *et al.* (2018). Brown shading delineates 'montane regions' (GMBA mountain inventory_V1.2; Körner *et al.*, 2017). Locations cited in the main text: AR, Albertine Rift; CVL, Cameroon Volcanic Line; DG, Dahomey Gap; EAM, Eastern Arc Mountains; EH, Ethiopian Highlands; GG, Guinean Gulf; Kat., Katanga; Map., Maputaland; S. Malawi, South Malawi. The map is projected in the Africa Albers Equal Area Conic coordinate reference system (ESRI:102022).

Using the RAINBIO dataset, we applied three filters, leading to the RAINBIO_{filtered} dataset we used for all our analyses:

- *Angiosperm filter.* As our study and phylogeny focused on Angiospermae, Pteridophyta and Gymnospermae were excluded.
- *Edge effect filter.* When considering patterns of relative endemism in a delimited zone, bias towards over-representation of artificial endemic taxa at the boundaries, is frequent. This artefact is a result of the rough cut within the geographic distribution of the taxa occurring both in and outside the study area, thereby artificially leading to the identification of these taxa as

endemics although some of them may occur on both sides of the boundary. In order to avoid this edge effect, we kept only genera with > 90% of their occurrences falling within our study area.

- *Occurrence filter.* Specimen density in RAINBIO is heterogeneous across tropical Africa. Poorly sampled SUs occur in poorly known regions and thus are more likely to include taxa that were collected only once (Sosef *et al.*, 2017). This can artificially increase the endemism of these SUs. To avoid potential bias caused by poorly sampled SUs, we included in our analyses only

SUs in which at least 100 recorded occurrences are present. A threshold of at least 100 occurrences per SU was selected after testing different threshold values (results not presented here).

Phylogenetic data We used a newly generated dated angiosperm phylogenetic tree (see Janssens *et al.*, 2019 for details). Briefly, phylogenetic inference was conducted based on a sampling of two plastid markers (matK and rbcL) retrieved from GenBank for 36 234 plant species distributed across 8357 genera. The alignment was conducted with MAFFT (Kato *et al.*, 2002) and refined with GENEIOUS 7.0 (Auckland, New Zealand). The final topology results from maximum likelihood tree inference with RAxML 7.4.2 (Stamatakis, 2006), constrained at the family level, under the general time-reversible substitution model with gamma rate heterogeneity. Divergence time was estimated using 52 fossil calibration points scattered among the angiosperms and dated using the penalized likelihood algorithm implemented in treePL (Smith & O'Meara, 2012). The hard maximum and minimum age constraints of the angiosperms were set at 220 and 140 Myr, respectively (Soltis *et al.*, 2002; Bell *et al.*, 2005; Moore *et al.*, 2007; Bell *et al.*, 2010; Magallón *et al.*, 2015). Finally, generic names in the RAINBIO dataset and in the phylogenetic tree were standardized using the Taxonomic Name Resolution Service tool (Boyle *et al.*, 2013).

Data analyses

Biodiversity analyses To explore the diversity, distribution and evolutionary history of the angiosperm in tropical Africa, we used the RAINBIO_{filtered} dataset and the resulting dated phylogenetic tree to calculate a set of taxonomic and phylogenetic indices for each SU across our study area. All metrics were calculated using BIODIVERSE v.2.0 (Laffan *et al.*, 2010). We used the 'Biodiverse pipeline' to run BIODIVERSE directly from R (https://github.com/NunzioKnerr/biodiverse_pipeline).

Taxonomic indices Genus richness (GR) is the number of distinct genera (*g*) present in each SU:

$$GR = \sum_g 1.$$

Weighted endemism (WE) is the sum of the inverse of each genus's (*g*) geographical range (R_g). R_g is measured as the number of SUs in which the genus occurs (Crisp *et al.*, 2001):

$$WE = \sum_g \frac{1}{R_g}$$

Phylogenetic indices Phylogenetic diversity (PD) is the sum of branch lengths connecting the root of the phylogenetic tree to all genera (tips of the phylogeny) within each SU (Faith, 1992). In the following formula, C is the total number of branches connecting all genera within a SU, c is a branch (a single segment

between two nodes, representing a clade), and L_c the branch length:

$$PD = \sum_{c \in C} L_c$$

Relative PD (RPD) is the ratio of the PD measured on the original phylogenetic tree (PD_{orig}) divided by the PD measured on a theoretical tree (PD_{theor}). The theoretical tree has the same topology as the original tree but all branches are of equal length. The RPD index thus measures the relative branch length within a SU: high RPD indicates an over-representation of long-branched genera whereas low RPD indicates over-representation of short-branched genera (Mishler *et al.*, 2014):

$$RPD = \frac{PD_{orig}}{PD_{theor}}$$

Phylogenetic endemism (PE) is the sum of branch lengths, weighted by the inverse of the branch's range (R_c), for each branch (c) connecting the roots of the phylogenetic tree to the genera (tips of the phylogeny) within a SU (Rosauer *et al.*, 2009). R_c is measured as the number of SUs in which the branch c occurs:

$$PE = \sum_{c \in C} \frac{L_c}{R_c}$$

Relative PE (RPE) is the ratio of the PE measured on the original phylogenetic tree (PE_{orig}) divided by the PE measured on a theoretical tree (PE_{theor}). The theoretical tree has the same topology as the original but all branches are of equal length (Mishler *et al.*, 2014). This index is the base for the categorical analyses of neo- and paleo-endemism (see later):

$$RPE = \frac{PE_{orig}}{PE_{theor}}$$

Null model – randomizations

To test which SUs had significantly higher or lower observed values than expected given the genus richness of the SU and the geographical range of all genera, we ran 999 randomizations using BIODIVERSE v.2.0 (Laffan *et al.*, 2010). For every run, the algorithm randomly reassigns all the genera to each SU without replacement. In order to respect both genus richness patterns and the geographical range of taxa, we constrained the procedure to keep the original number of genera in each SU and to keep the original number of SUs in which each genus occurs ('rand_struct' option in BIODIVERSE).

Then, for each metric, the observed value is compared with the 999 randomization values. Significantly greater or lower than expected was defined as being > 97.5% or < 2.5% of the random values, respectively (two-tailed test, $\alpha = 0.05$). High degrees of significance were established for observed values > 99% or < 1% of the random values.

This randomization test was carried out for WE, PD, PE and RPD, resulting in the assignment of a significance class for each of these metrics for each SU: significantly very low (<0.01), significantly low (<0.025), 'not significant', significantly high (>0.975) or significantly very high (>0.99).

Categorical analysis of neo- and paleo-Endemism (CANAPE)

The categorical analysis of neo- and paleo-endemism (CANAPE) discriminates SUs with significantly high PE in neo- or paleo-endemism based on taxon occurrences and the dated phylogenetic tree (Mishler *et al.*, 2014). First, we calculate the PE based on the original phylogenetic tree (PE_{orig}) and the PE based on the theoretical tree (PE_{theor} , branches of equal length) for each randomization of genera composition and subsequently compare those with the observed values. This allows us to select SUs that are centres of high PE, that is, showing either significantly high PE_{orig} or PE_{theor} or both (observed values of PE_{orig} and $PE_{theor} > 95\%$ of the random values; one-tailed test, $\alpha = 0.05$). Second, significant SUs are categorized into four nonoverlapping categories. If the RPE ratio (PE_{orig}/PE_{theor}) is higher than expected (two-tailed test, $\alpha = 0.05$), the SU contains significantly more endemic genera on long branches and is identified as a centre of 'paleo-endemism'. If the RPE ratio is lower than expected (two-tailed test, $\alpha = 0.05$), the SU contains significantly more endemic genera on short branches and is identified as a centre of 'neo-endemism'. If the RPE is not significantly high or low, but both PE_{orig} and PE_{theor} are significantly high at the level of $\alpha = 0.05$, SU is tagged as centre of 'mixed-endemism' (i.e. a mix of endemic genera with both long and short branches). Finally, if a 'mixed-endemism' SU presents both high PE_{orig} and PE_{theor} at the level of $\alpha = 0.01$, the SU is tagged as a centre of 'super-endemism' (i.e. highly significant concentration of endemic long and short branches).

As CANAPE results might be sensitive to the SU size, CANAPE was also carried out with four different SU sizes across the study zone: 50, 75, 200 and 300 km square. The SUs contain at least 50, 75, 200 and 300 occurrences, respectively.

Overlap with montane regions

A 'montane' region can be defined according to differences in elevation, relief or steepness. We adopted the montane definition of Körner *et al.* (2011) based on the concept of steepness, the basic and consistent feature that reflects landscape heterogeneity found in mountains. Indeed, a definition based solely on elevation would consider highland plateaus as mountains (e.g. Tibetan Plateau, Altiplano) even if they are relatively flat landscapes. For continental-scale purposes, steepness is estimated with the ruggedness, that is, the elevation range between a grid cell and the eight adjacent cells in the grid (Körner *et al.*, 2011). A cell is then considered as a 'mountain' if its ruggedness exceeds 200 m. Global mountain biodiversity assessment (GMBA) provides ruggedness data for 2.5-arcminute (c. 4.6×4.6 km at the equator) plots across the globe (GMBA mountain definition_V1.0 database; Körner *et al.*, 2011) and shapefiles delineating

'montane areas' (GMBA mountain inventory_V1.2; Körner *et al.*, 2017). For each SU, we calculated the mean ruggedness, the percentage of montane plots (i.e. percentage of 4.6×4.6 km plots whose ruggedness exceeds 200 m) and the percentage of overlap with 'montane areas' defined by GMBA.

By contrast, we defined 'lowlands' on the elevation feature to avoid considering a highland plateau as a lowland area. Elevation data were retrieved from the digital elevation modelling data produced by the NASA Shuttle Radar Topographic Mission (SRTM; <http://srtm.csi.cgiar.org/>). We downloaded the 250 m resolution (SRTM v.4.1) data in GeoTiff raster format, and extracted a raster file of the tropical Africa region using QGIS 2.18. From this raster file, we calculated the mean elevation for each SU.

We compared the distribution of the mean ruggedness, the percentage of montane plots and the percentage of overlap with 'montane areas' of the SUs across:

- (1) the three categories of the PD results (significantly high or very high PD; not significant; significantly low or very low PD);
- (2) the five categories of the CANAPE results (neo-endemism; paleo-endemism; mixed-endemism; super-endemism, not significant).

We compared the distribution of the mean elevation of the SUs across the three categories of the RPD results (significantly high or very high RPD; not significant; significantly low or very low RPD).

As normality of the residuals (one of the fundamental assumptions for ANOVAs) was not fulfilled for the three comparisons (results not shown), we used a nonparametric Kruskal–Wallis test. If at least one of the distributions was significantly different from the others ($P < 0.05$), then Wilcoxon pairwise comparison (two-tailed tests with Holm's correction) was performed to disentangle which categories were significantly different from each other ($P < 0.05$).

CANAPE and protected areas network overlap

CANAPE results were overlapped with the African protected areas network retrieved from the World Database on Protected Areas (WDPA, <https://protectedplanet.net/>, accessed June 2018). Protected areas exclusively related to marine or faunal protection (e.g. 'bird reserve', 'hunting reserve', 'faunal reserve') were excluded. The number of SUs that contained protected areas (PA) were counted for any PA and for the most restrictive PAs in terms of conservation (reported as International Union for Conservation of Nature (IUCN) categories Ia, Ib and II; PAs that have a main focus on biodiversity) (IUCN, 2008).

Results

Datasets

Plant occurrence The RAINBIO_{filtered} dataset contained 547 273 occurrences of 2345 genera distributed across 638 equal-area square SUs. GR is unevenly distributed across tropical Africa, ranging from 39 to 853 genera per SU (Fig. 3). The most diverse SUs are found around the Guinean Gulf, particularly in Gabon, western Cameroon, in the Dahomey Gap, the Eastern

Arc Mountains and the Albertine Rift region, and to a lesser extent isolated SUs in the DRC and the Ethiopian Highlands.

Phylogeny The unfiltered phylogenetic tree contained 36 234 species and 8357 genera. Based on the RAINBIO_{filtered} dataset, this phylogenetic tree was pruned and included a final total of 1719 genera. Of these, 36% (618/1719) were not monophyletic in the unfiltered phylogenetic tree. In this case, we randomly sampled one of the branches of the nonmonophyletic genera. The tropical African flora at generic level represents 113 687 Myr of cumulative evolutionary history (i.e. the cumulative age of the taxa, estimated by the sum of all branch lengths on the tree).

Biodiversity analyses

Weighted endemism Raw values of WE (Fig. 4a) followed a similar pattern to GR (Fig. 3) ($R^2 = 0.764$; Supporting Information Fig. S1). Significantly high WE SUs (Fig. 4b) are located in the eastern parts of tropical Africa, in Ethiopia, Kenya-Tanzania, Katanga (southeast DRC), Maputaland and scattered in south-east Africa. This indicated that these regions harbour more endemic genera than expected from random. By contrast, regions in Central and West Africa (i.e. the Guineo-Congolian region) are characterized by a significantly less WE than expected at random (Fig. 4b).

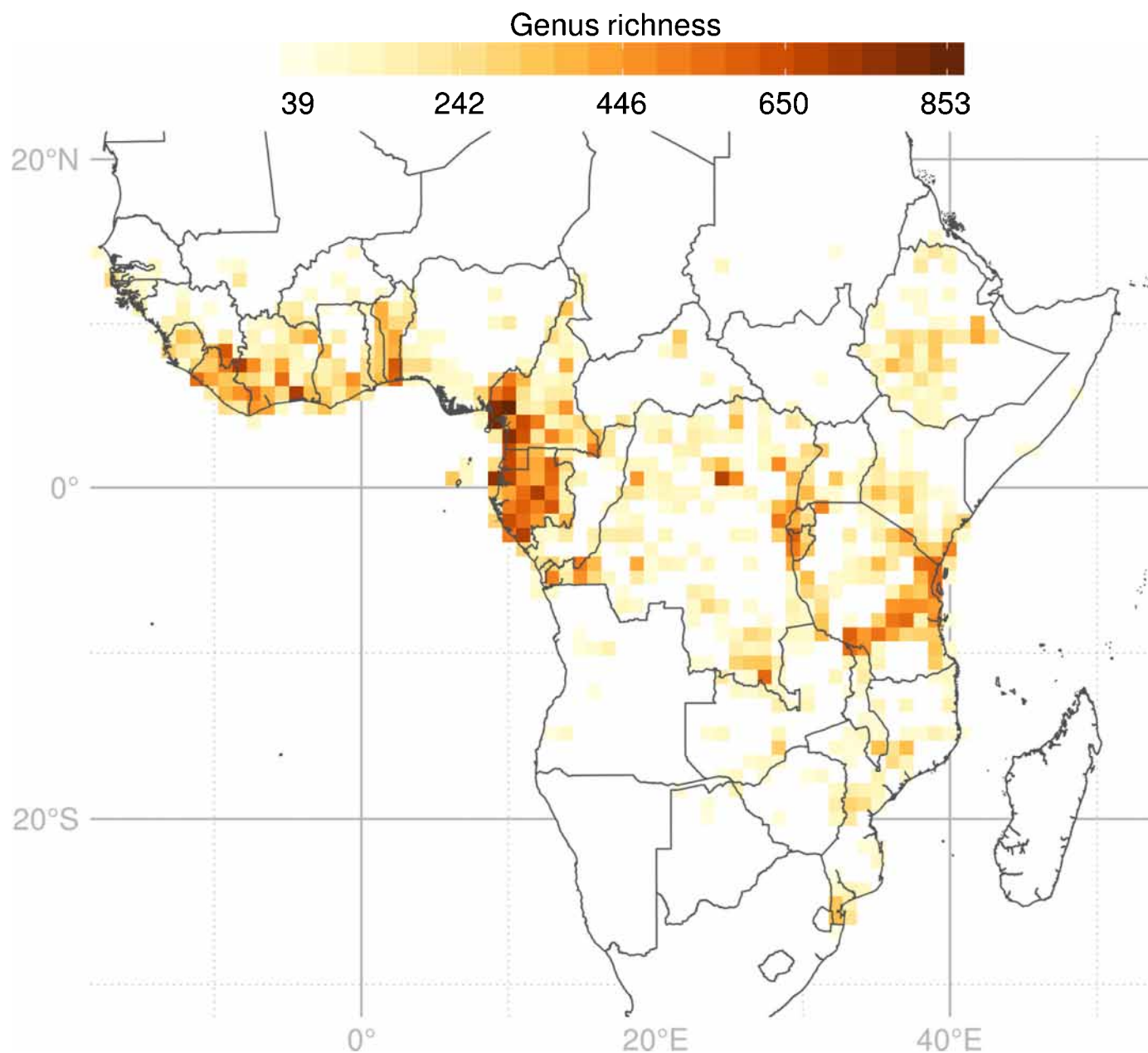


Fig. 3 Genus richness map of the tropical African angiosperms, based on the distribution of 547 273 occurrences of 2345 genera across 638 equal area (100 × 100 km) sampling units. White regions contain < 100 records.

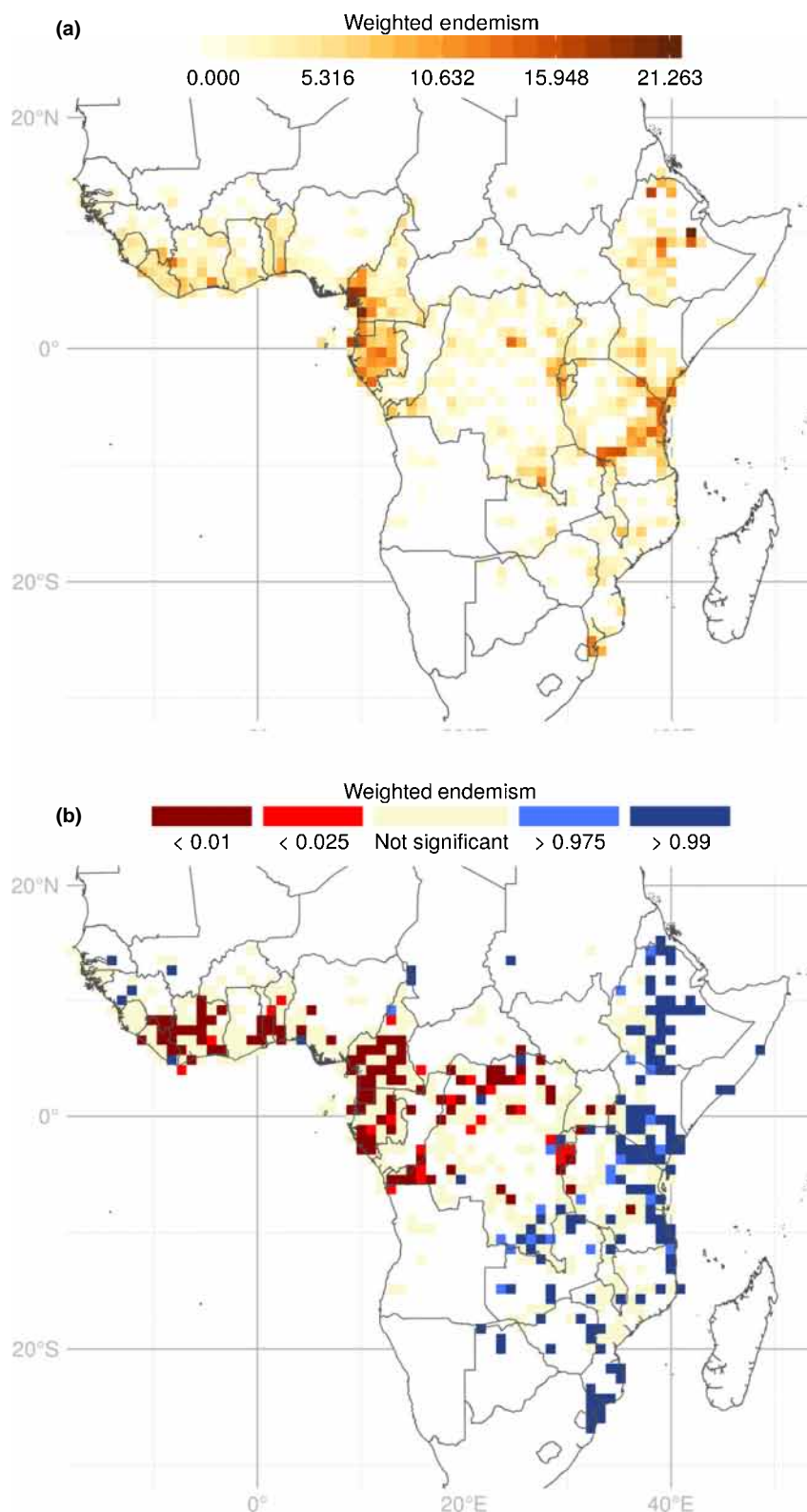


Fig. 4 Weighted endemism (WE) maps of 2345 tropical African angiosperm genera. (a) Observed values of WE; (b) significant WE results from the randomization test. Sampling units (SUs): 100×100 km. Red SUs contain less WE than expected; blue SUs contain more WE than expected; beige SUs are not significant; white regions contain < 100 records and were not included in the analyses.

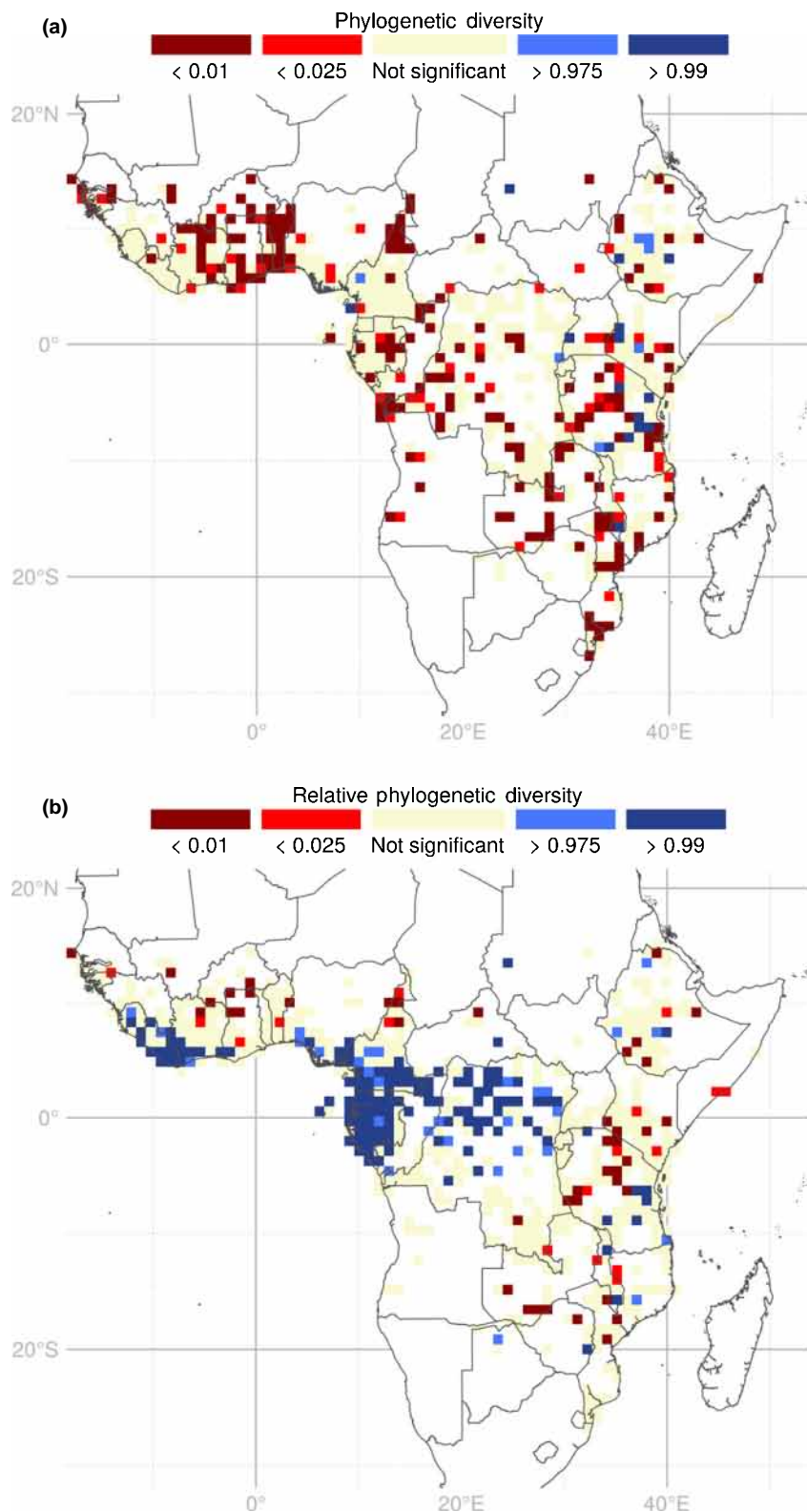


Fig. 5 Maps of significant (a) phylogenetic diversity (PD) and (b) relative phylogenetic diversity (RPD) resulting from the randomization tests for 1719 tropical African angiosperm genera. Sampling units (SUs) are 100 × 100 km squares. Red SUs contain less PD or RPD than expected; blue SUs contain more PD or RPD than expected; beige SUs are not significant; white regions contain < 100 records and were not included in the analyses.

Randomization tests for PD Calculations of phylogenetic metrics were conducted on the 1719 genera found both in the phylogenetic tree and in the RAINBIO_{filtered} dataset. PD is highly correlated with genus richness ($R^2 = 0.992$; Figs S2, S3). Higher PD than expected was found in 22 SUs (Fig. 5a), located in

mountainous areas (Fig. S4; Table S1) around Lake Victoria, near the Eastern Arc Mountains, in northern Kivu, in Central Ethiopia and in the Cameroon Volcanic Line (Fig. 5a). Conversely, 230 SUs presented lower PD than expected. These are distributed broadly across the study zone, with the main centres

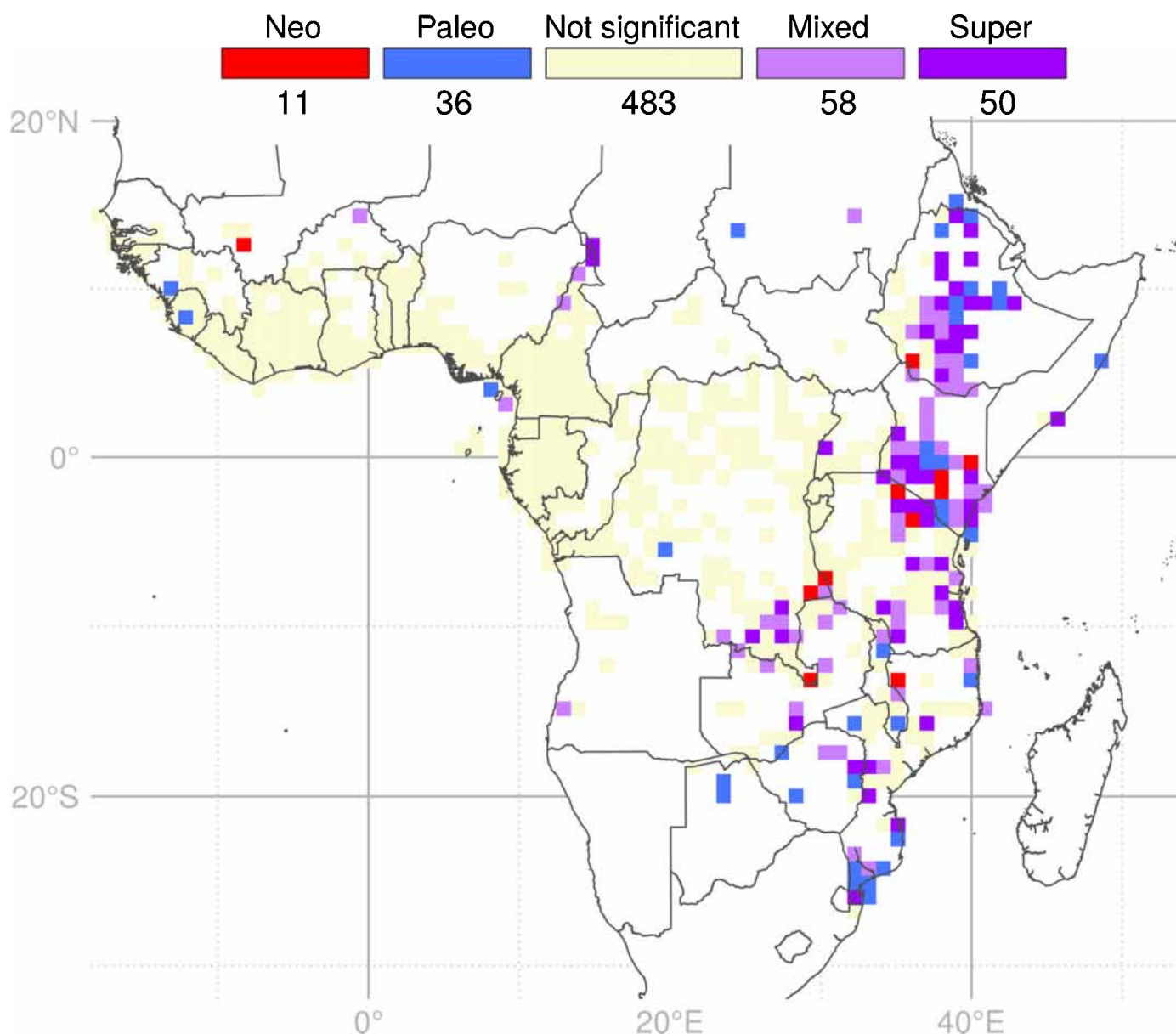


Fig. 6 Map of significant phylogenetic endemism (PE) identified by the categorical analysis of neo- and paleo-endemism (CANAPE) for 1719 tropical African angiosperm genera. Sampling units (SUs) are 100 × 100 km squares. Coloured SUs present significantly high PE: red, centres of neo-endemism; blue, centres of paleo-endemism; violet, centres of mixed-endemism (i.e. mix of neo- and paleo-endemism), with darker violet indicating centres of super-endemism; beige, not significant; white regions contain < 100 records and were not included in the analyses. Figures below the legend indicate the number of SUs included in each category.

occurring in the Dahomey Gap and to the west, in northern Cameroon, central Gabon and coastal Congo, and across eastern Africa (Fig. 5a).

SUs of significantly high RPD, representing concentrations of long-branched (i.e. old) genera, are clustered in the Guineo-Congolian region, western African forests and scattered in eastern Africa (Fig. 5b). SUs of significant low RPD, representing concentrations of short-branched (i.e. young) genera, are scattered in the north of the Guineo-Congolian region and in eastern Africa (Fig. 5b).

Categorical Analyses of neo- and paleo-endemism As for PD and GR, PE is highly correlated with WE ($R^2 = 0.985$; Fig. S5)

and presents a similar pattern of significance as the WEs (Fig. S6). A total of 155 SUs were revealed by the CANAPE analyses as containing significantly more PE than expected (red, blue and purple SUs in Fig. 6). These are concentrated mainly in the eastern part of Africa. Areas of mixed- and super-endemism are the most common significant CANAPE SUs (58 and 50, respectively). Only 11 SUs are classified as areas of neo-endemism and these are generally surrounded by areas of mixed-, super- or paleo-endemism. As for neo-endemism, we found the 36 SUs of paleo-endemism surrounded by mixed- and super-endemism SUs. The Ethiopian Highlands show a concentration of mixed, super and paleo-endemic SUs. From central Kenya towards

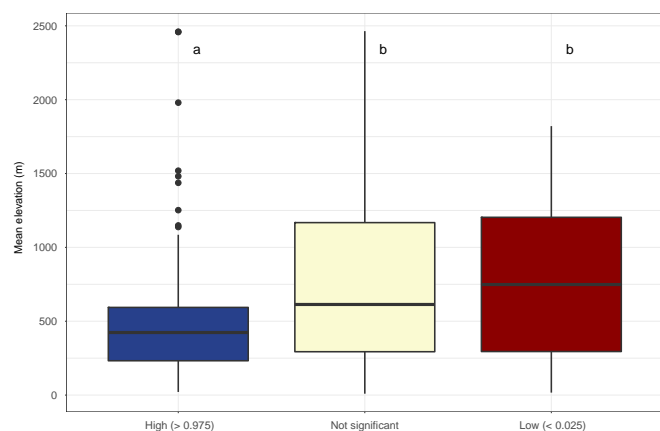


Fig. 7 Boxplot of the distribution of the mean elevation of the sampling units (SUs) depending on their relative phylogenetic diversity significance class. Distributions of the mean elevation of the SUs are significantly different (Kruskal–Wallis test, $P < 0.05$). Different letters indicate significant differences ($P < 0.05$; pairwise comparison using Wilcoxon test with Holm's correction; see Supporting Information Table S2). For each box, the bold horizontal line corresponds to the median; the lower and upper bounds of the box correspond to first and third quartiles, respectively; the upper vertical line extends from the upper bound of the box to the highest value of the distribution, no further than $1.5 \times$ interquartile range (IQR, or the distance between the first and third quartiles); the lower vertical line extends from the lower bound of the box to the lowest value of the distribution, no further than $1.5 \times$ IQR; black dots are values beyond IQR ('outlier' values).

northern Tanzania, a similar cluster is found, with some neo-endemic SUs. Maputaland also concentrates PE (mostly paleo-). Smaller clusters occurred across eastern Africa, such as in coastal and southwestern Tanzania, Katanga and other scattered areas in southeast Africa. Concentrations of significant PE in West and Central Africa are very low and mainly located in northern Cameroon, Bioko Island (Equatorial Guinea, Guinean Gulf), Guinea and Sierra Leone.

Different SU sizes give a similar overall CANAPE results, with higher coverage of the study zone with large SUs (200 and 300 km square) and lower coverage with small SUs (50 and 75 km square) (Fig. S7).

Montane and lowland regions The mean elevation (Fig. 7) differs significantly between the RPD randomization categories (Kruskal–Wallis test, $P < 0.05$; Table S2). The high RPD SUs are significantly lower in elevation than nonsignificant and low RPD SUs (Wilcoxon pairwise comparison, $P < 0.05$; Table S2). Some SUs are outliers of high RPD distribution (solid dots), meaning these few SUs are occurring at high elevation.

The distribution of the mean ruggedness (Fig. 8), the percentage of montane plots (Fig. S8) and the percentage of overlap with 'montane areas' (Fig. S6) differ significantly between the CANAPE categories ($P < 0.05$; Tables S3–S5). The mean ruggedness of mixed- and super-endemic SUs is significantly higher than the ruggedness of nonsignificant SUs (Fig. 8) (Wilcoxon pairwise comparison, $P < 0.05$; Table S3). The mean ruggedness of neo- and paleo-endemic SUs is not different from all the others (Wilcoxon pairwise comparison, $P < 0.05$; Table S3).

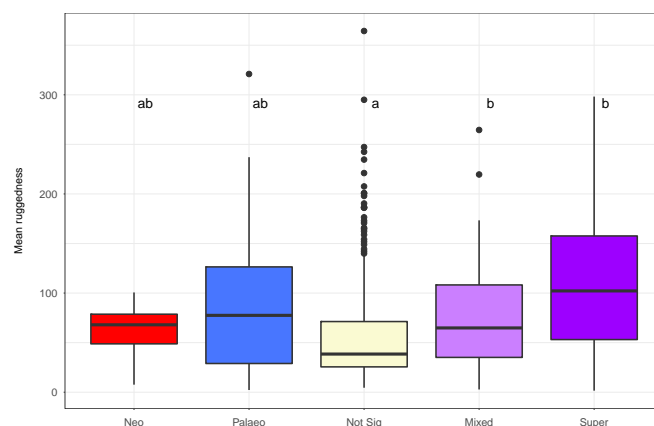


Fig. 8 Boxplot of the distribution of the mean ruggedness of the sampling units (SUs) depending on their categorical analysis of neo- and paleo-endemism (CANAPE) category. Distributions of the mean ruggedness of the sampling units (SUs) are significantly different (Kruskal–Wallis test, $P < 0.05$). Different letters indicate significant difference ($P < 0.05$; pairwise comparison using Wilcoxon test with Holm's correction; see Supporting Information Table S3). For each box, the bold horizontal line corresponds to the median; the lower and upper bounds of the box correspond to first and third quartiles, respectively; the upper vertical line extends from the upper bound of the box to the highest value of the distribution, no further than $1.5 \times$ interquartile range (IQR, or the distance between the first and third quartiles); the lower vertical line extends from the lower bound of the box to the lowest value of the distribution, no further than $1.5 \times$ IQR; black dots are values beyond IQR ('outlier' values).

The distributions of the percentage of montane plots and of the overlap with 'montane areas' of the SUs show similar differences across the five CANAPE categories, except for paleo-endemic SUs that are significantly different from nonsignificant SUs (Figs S8, S9; Tables S4, S5).

Protected areas network overlap The overlap between the African PA network and centres of significant PE detected by CANAPE is partial (Fig. 9). More than 85% of the CANAPE cells contain at least a part of a PA, and $> 42\%$ of the CANAPE cells partially overlap with one of the most restrictive PA IUCN categories (Ia, Ib or II). The whole PA network covers 18.7% of the CANAPE cell surface, and 5.9% when considering only Ia, Ib and II PA categories (Tables S6, S7).

Discussion

Significant concentrations of evolutionary history and taxonomic endemism

In this study, we combined for the first time at the near continental level a large floristic dataset within a phylogenetic framework to examine more than 113 000 Myr of evolutionary history of tropical African angiosperms. Our GR map (Fig. 3) corroborates previous studies highlighting Cameroon, Gabon, the Albertine Rift, the Eastern Arc Mountains and coastal Tanzania as containing high taxon richness (Linder, 2001; Küper *et al.*, 2004; Lovett *et al.*, 2005; Plumptre *et al.*, 2007; Sosef *et al.*, 2017).

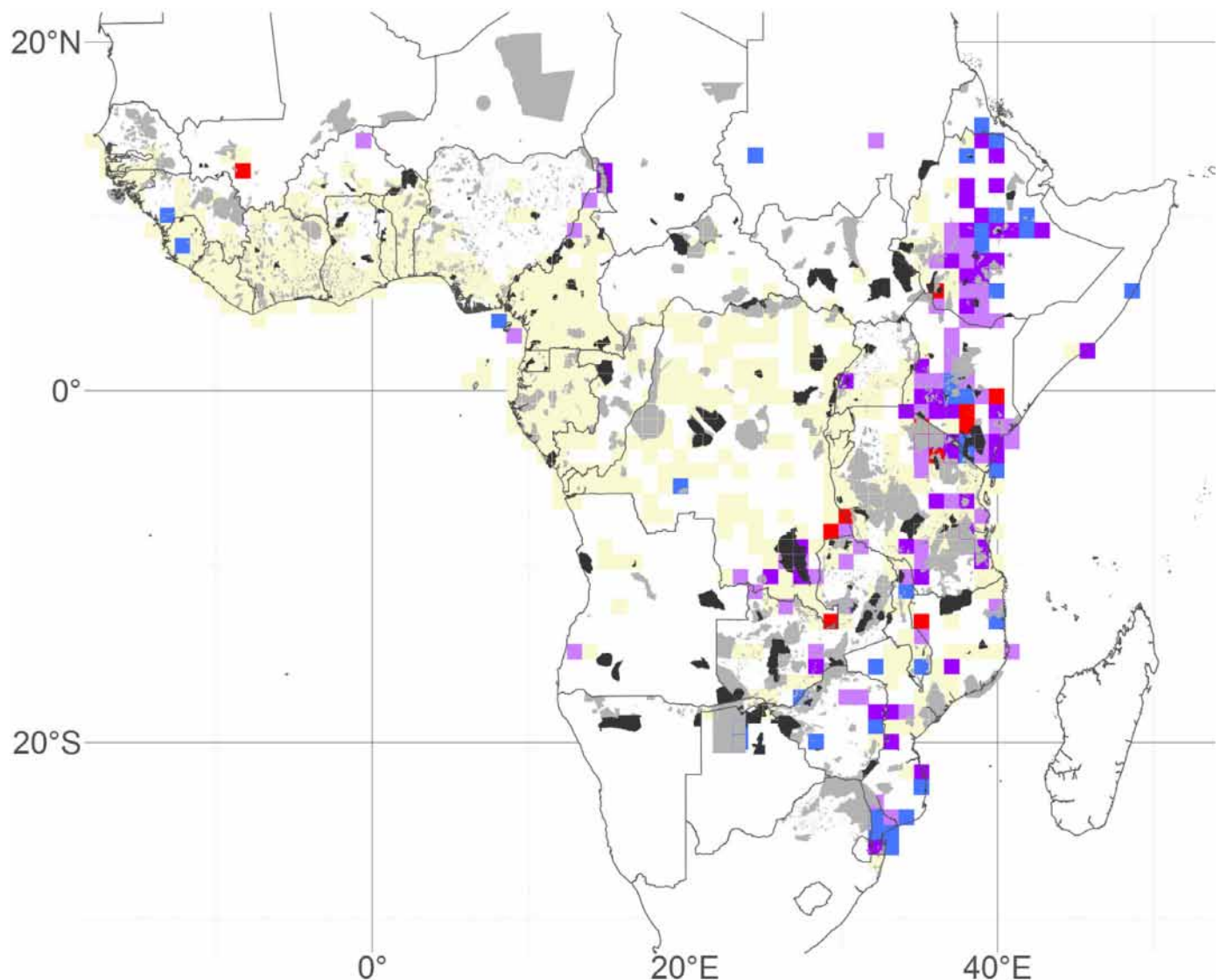


Fig. 9 Map of the protected areas of Africa overlaid onto categorical analysis of neo- and paleo-endemism (CANAPE) results. Dark grey areas are the most restrictive protected areas (PAs) (International Union for Conservation of Nature (IUCN) categories Ia, Ib or II); light grey areas are other PAs (IUCN categories III, IV, V or VI, or with no category assigned). Data were retrieved from the World Database on Protected Areas (WDPA, <https://protectedplanet.net/>, accessed June 2018). Sampling units (SUs) are 100×100 km squares. Coloured SUs present significantly high PE: red, centres of neo-endemism; blue, centres of paleo-endemism; violet, centres of mixed-endemism (i.e. mix of neo- and paleo-endemism), with darker violet indicating centres of super-endemism; beige, not significant; white SUs contain < 100 records.

Despite the correlation between GR and PD (Fig. S2), our randomization procedure reveals that in some regions, PD is higher or lower than expected by chance (Fig. 5a). A decoupled pattern between GR and PD was also observed in South Africa (Forest *et al.*, 2007). Across tropical Africa, 230 out of 638 SUs showed significantly lower PD than expected by chance (phylogenetic clustering). These are located in a lowland rainforest in Gabon and central DRC, but also in drier regions such as the Dahomey Gap, northern Cameroon, savannah regions in western DRC and in eastern Africa (Fig. 5a). In savannah (i.e. wooded grassland) regions, phylogenetic clustering is probably caused by the dominance of Poaceae and Fabaceae (Jacobs, 2004). In lowland tropical rainforest regions, phylogenetic clustering suggests evolutionary conservatism in tropical forest adaptations.

Analogous phylogenetic clustering has been observed in some tropical forest and arid regions in Borneo, Central America, Australia and Chile (Webb, 2000; Swenson *et al.*, 2007; Thornhill *et al.*, 2016; Scherson *et al.*, 2017). By contrast, only six SUs had significantly higher PD than expected by chance (phylogenetic overdispersion). These are mainly located in montane areas (Fig. S5) of the Cameroon Volcanic Line, Ethiopian Highlands, northern Kivu, central Kenya, the Eastern Arc Mountains and southern Malawi (Fig. 5a). Phylogenetic overdispersion may be related to competitive exclusion of closely related genera whose niches show a large overlap (Webb *et al.*, 2002), extinction (Kissling *et al.*, 2012; Couvreur, 2015), or colonization of phylogenetically distinct lineages. Another reason for this pattern could be linked to the complex topography of montane areas

containing heterogeneous habitats and various soil types harbouring distinctly adapted plant lineages (Peterson *et al.*, 1997; Hoorn *et al.*, 2010, 2013; Antonelli *et al.*, 2018). Phylogenetically overdispersed SUs have also been observed in ecotone regions in the Cape region (Forest *et al.*, 2007) and were argued to be of high conservation importance as they represent an important amount of evolutionary history (Faith, 1992; Swenson *et al.*, 2007; Forest *et al.*, 2015).

The regions of high taxonomic diversity mentioned earlier (Cameroon, Gabon, the Albertine Rift, the Eastern Arc Mountains and coastal Tanzania) are also known to contain a high number of endemic species (Linder, 2001; Küper *et al.*, 2004; Plumptre *et al.*, 2007). We indeed found a similar pattern between GR and observed WE (Figs 4a, S1). However, our randomization procedure revealed that these regions present lower amounts of generic endemism than expected (Fig. 4b) – except for southern coastal Tanzania. This does not mean, however, that Cameroon, Gabon, the Albertine Rift and the Eastern Arc Mountains are not rich in endemic genera, but that given the high taxonomic richness, the concentration of endemic genera they harbour is not exceptional. Instead, generic level distribution ranges are wider than expected, indicating an over-representation of widespread genera in the Guineo-Congolian region (Fig. 4b). By contrast, East Africa, particularly Ethiopia, Kenya, Tanzania, Katanga (DRC), Maputaland and other SUs in southeast Africa, harbour more endemic genera than expected (high WE; Fig. 4b). These represent important endemic portions of evolutionary history (high PE; Fig. 6), possibly related to the topographic and edaphic complexity of East Africa. Indeed, East Africa has a greater elevation range than West or Central Africa (Guillocheau *et al.*, 2018) and the tectonic activity that occurred in East Africa generated places that differ edaphically from surrounding areas. Edaphic complexity plays a great role in generating endemism (Bruchmann & Hobohm, 2014; Rahbek *et al.*, 2019), and the habitat heterogeneity and fragmentation of montane regions are often associated with range-restricted taxa (Moritz *et al.*, 2002; Hughes & Eastwood, 2006; Kier *et al.*, 2009; Fjeldså *et al.*, 2012). Moreover, East Africa is acknowledged to be a ‘complex biogeographical mixture’ containing distinct taxa adapted to various localized environmental gradients generated by the complex topography and climate (Linder *et al.*, 2012; Droissart *et al.*, 2018). Endemic lineages are thus more likely to occur in greater proportion in the regions that are topographically and edaphically complex than in regions of low habitat heterogeneity (such as lowlands) or low edaphic complexity (such as, *inter alia*, the Eastern Arc Mountains). Finally, endemism in eastern Africa seems to have been undervalued in previous continental-scale studies (Fjeldså & Lovett, 1997; Linder, 2001; but see Küper *et al.*, 2004). Our incorporation of evolutionary history and randomization procedures allowed the identification of new regions of high evolutionary and conservation interests (Fig. 6).

Cradles and museums of diversity

In our study, most SUs identified as containing significantly high PE are centres of mixed- or super-endemism, concentrating both

neo- and paleo-endemic genera (Fig. 6). These mixed-endemism and super-endemism SUs occur significantly more frequently in montane regions than did nonsignificant SUs (Fig. 8). In addition, neo-endemism SUs also show a nonsignificant tendency to occur mainly in montane areas (Fig. 8). Thus, even though mountains have been suggested to act as cradles of diversity (Roy, 1997; Jetz *et al.*, 2004; Fjeldså & Rahbek, 2006; Schwery *et al.*, 2014; Merckx *et al.*, 2015), our results support the hypothesis that montane regions, particularly in East Africa, are both museums and cradles of diversity (Wasser & Lovett, 1993; Fjeldså & Lovett, 1997; López-Pujol *et al.*, 2011). Our results also suggest that the montane speciation model, where mountain ‘cradles’ are considered to feed surrounding (generally lowland) regions in species (Roy, 1997; Jetz *et al.*, 2004; Fjeldså & Rahbek, 2006; Hoorn *et al.*, 2013), is hard to support at genus level across tropical Africa. This hypothesis appears reductive as mountains can also act as ‘museums’, and centres of diversification may also occur elsewhere, such as around river networks or in lowland ecotonal zones (e.g. transitions between forests and savannah) (Fjeldså, 1994; Plana, 2004).

Furthermore, by identifying Ethiopian highlands, Kenya, Tanzania, Katanga, southeast Africa and Maputaland as centres of mixed-endemism, we demonstrate that within these regions, processes of recent diversification occur together with favourable conditions for lineage persistence leading to a greater accumulation of evolutionary history than expected by chance. Several studies also found areas of mixed-endemism in other montane regions, such as in South America (Fjeldså, 1994; Fjeldså & Lovett, 1997; Bitencourt & Rapini, 2013), and China (López-Pujol *et al.*, 2011). In tropical Africa, previous identification of centres of neo- and paleo-endemism in plants focused on only two plant clades *a priori* assumed to be neo- or paleo-endemics, because of a lack of dated plant phylogenetic trees (Fjeldså & Lovett, 1997). Fjeldså & Lovett (1997) reported co-occurrences of neo- and paleo-endemics in some mountains, such as the Cameroon Volcanic Line or the Albertine Rift, but they did not detect the same East African regions to act as both museums and cradles, as reported here (Fig. 6). This underlines the importance of integrating randomization and categorization procedures together with a comprehensive phylogeny and angiosperm wide datasets to detect patterns of significant neo-, paleo- and mixed-endemism (Mishler *et al.*, 2014; Thornhill *et al.*, 2016).

By contrast, most parts of West and Central Africa present nonsignificant CANAPE SUs, indicating that these regions harbour no more endemic genera than expected. Randomization of the RPD revealed concentrations of old genera in lowland rainforests of Guineo-Congolia (Figs 5b, 7). As mentioned earlier, these genera also appear to be widespread (low WE; Fig. 4b). Several local museums of biodiversity have been proposed to occur within this region (Fjeldså & Lovett, 1997; Muriene *et al.*, 2013), which, according to Linder (2014), contain the oldest flora of tropical Africa, and here appears to be a museum of diversity as a whole.

Our study highlights the importance of incorporating large-scale taxonomically verified distribution datasets with mega-phylogenies, which lead to an improved understanding of tropical

plant biodiversity evolution. Similar studies in other megadiverse regions such as the Amazon basin will allow comparison of tropical biodiversity origins and maintenance processes across the tropics.

Taxonomic and geographic resolution effects

Biodiversity and phylogenetic analyses at genus level have already demonstrated their relevance in understanding patterns of biodiversity evolution (Forest *et al.*, 2007; Thornhill *et al.*, 2016; Scherson *et al.*, 2017). However, interpretation must not be extrapolated to other taxonomic levels. This is particularly the case for analyses that are focused on species endemism, as different species within a genus may show various geographic distribution patterns. For example, the genus *Impatiens* (Balsaminaceae) is widespread in the Old World tropics and subtropics, but the majority (*c.* 80%) of its African species are range-restricted in regions such as the Eastern Arc Mountains (Grey-Wilson, 1980; Lovett *et al.*, 2000). Another drawback is that it is harder to detect centres of neo-endemism when using generic-level data (Thornhill *et al.*, 2016). This makes the 11 SUs detected as centres of neo-endemism (Fig. 6) strong cradles of diversity. The completeness of the plant distribution dataset as well as the resolution of the phylogeny may also affect our estimate of PE. Here, even if the RAINBIO dataset represents *c.* 89% of the known diversity in tropical Africa, it is the best-quality data that are available to date (Dauby *et al.*, 2016). The relatively high proportion of nonmonophyletic genera (36%) that are present in the unfiltered angiosperm tree is inherent and unavoidable when making use of large-scale phylogenetic approaches. On one hand, this is caused by the compromise between the amount of markers used and the number of species included in the dataset (see, e.g., Qian & Jin, 2016; Smith & Brown, 2018). On the other hand, there are still some taxonomical uncertainties regarding the generic status of certain angiosperm African genera (e.g. Rubiaceae, Convolvulaceae, Cyperaceae) in which several genera have not been taxonomically revised (Muasya *et al.*, 2009; De Block *et al.*, 2015; Simões & Staples, 2017). Despite this, we are confident that given the broad scale of our analysis, our results will be robust to improved phylogenetic studies at the genus level.

In tropical Africa, documented regions with high degrees of diversity and endemism, and postulated to act as both cradles and museums of species diversity are predominantly mountainous (e.g. Cameroon Volcanic Line, the Albertine Rift and the Eastern Arc Mountains) (Fjeldsø & Lovett, 1997; Lovett *et al.*, 2005; Burgess *et al.*, 2007; Plumptre *et al.*, 2007). These mountain blocks are generally small in terms of size (e.g. $< 70 \times 70$ km for the Eastern Arc Mountains; Burgess *et al.*, 2007). Thus, the resolution of our analyses (100×100 km SUs) may have diluted the montane endemism effect with the high diversity and potentially widespread genera of adjacent lowlands regions. Using smaller SUs gave a similar overall CANAPE result, but with less coverage of the study zone because of a higher number of poorly sampled SUs that were excluded from the analyses (Fig. S7). Moreover, in mixed-endemism regions, neo-endemics and paleo-endemics may be locally concentrated in different places within a mountain block (Bitencourt & Rapini, 2013).

Conservation implications

Identifying and conserving areas of evolutionary potential, harbouring important processes leading to diversification and/or lineage persistence, are of crucial conservation importance (Fjeldsø, 1994; Mace *et al.*, 2003; Faith *et al.*, 2010; Kraft *et al.*, 2010). In eastern Africa, most of the centres of PE are centres of mixed-endemism (Fig. 6), somewhat bypassing the need to choose between conserving regions of active diversification or persistence (Cowling & Pressey, 2001).

The coverage of the identified centres of PE by the PA network is high, as 85% of the CANAPE SUs contain at least a portion of PA, and 42% contain at least a portion of the most restrictive PAs (Ia, Ib or II types). This means that important regions of diversification and persistence are already represented in the tropical African PA network. In terms of surface, only 18% of the CANAPE SUs' surface is covered by PAs (Fig. 9; Tables S6, S7). This is as expected, as PAs are generally small areas and are unlikely to cover a complete 100×100 km SU. Significant CANAPE areas that are not well represented by PAs are mainly situated in South Malawi and, to a lesser extent, in Ethiopia (Fig. 9). Still, it is possible that the actual occurrences of endemics and the PAs within a SU do not coincide, so it might be worthwhile analysing diversity patterns at a fine scale when adapting or adding PAs.

The regions containing significant high PE, particularly regions of mixed-endemism that are simultaneously 'cradles' and 'museums' of diversity, should be considered in future conservation planning or PA extension. Considerable increases in the coverage of multiple facets of biodiversity (taxonomic, phylogenetic and functional) are possible with small expansions of protected areas, if the planning is achieved thoroughly and with an explicit consideration of these multiple facets (Pollock *et al.*, 2015, 2017).

Acknowledgements

This work was co-funded by the French Foundation for Research on Biodiversity (FRB) and the Provence-Alpes-Côte d'Azur région (PACA) region through the Centre for Synthesis and Analysis of Biodiversity data (CESAB) programme, as part of the RAINBIO research project (<http://rainbio.cesab.org/>) and the Agence Nationale de la Recherche (grant number ANR-15-CE02-0002-01), both to TLPC. JCS considers this work a contribution to his VILLUM Investigator project 'Biodiversity Dynamics in a Changing World' funded by VILLUM FONDEN (grant 16549) and his TREECHANGE project funded by Independent Research Fund Denmark|Natural Sciences (grant 6108-00078B). GD was partly funded by the Belgian Fund for Scientific Research (F.R.S.-FNRS).

Author contributions

L-PMJD and TLPC conceived the study; L-PMJD and SBJ undertook the analyses; L-PMJD, SBJ, GD, AB-O, BAM, VD, J-CS, MSMS, TS, DJH, BS, JJW, OJH and TLPC contributed

data and ideas; L-PMJD and TLPC led the writing; L-PMJD, SBJ, GD, AB-O, BAM, VD, J-CS, MSMS, TS, DJH, BS, JJW, OJH and TLPC read and approved the final version. L-PMJD and SBJ contributed equally to this work.

ORCID

Anne Blach-Overgaard  <https://orcid.org/0000-0002-0200-1547>
 Thomas L. P. Couvreur  <https://orcid.org/0000-0002-8509-6587>
 Léo-Paul M. J. Dagallier  <https://orcid.org/0000-0002-3270-1544>
 Gilles Dauby  <https://orcid.org/0000-0002-9498-413X>
 Vincent Droissart  <https://orcid.org/0000-0001-9798-5616>
 Olivier J. Hardy  <https://orcid.org/0000-0003-2052-1527>
 David J. Harris  <https://orcid.org/0000-0002-6801-2484>
 Steven B. Janssens  <https://orcid.org/0000-0003-0603-7587>
 Barbara A. Mackinder  <https://orcid.org/0000-0003-1966-7553>
 Bonaventure Sonké  <https://orcid.org/0000-0002-4310-3603>
 Marc S. M. Sosef  <https://orcid.org/0000-0002-6997-5813>
 Jens-Christian Svenning  <https://orcid.org/0000-0002-3415-0862>
 Jan J. Wieringa  <https://orcid.org/0000-0003-0566-372X>

References

- Antonelli A, Kissling WD, Flantua SGA, Bermúdez MA, Mulch A, Muellner-Riehl AN, Kreft H, Linder HP, Badgley C, Fjeldsø J *et al.* 2018. Geological and climatic influences on mountain biodiversity. *Nature Geoscience* 11: 718–725.
- Bell CD, Soltis DE, Soltis PS. 2005. The age of the angiosperms: a molecular timescale without a clock. *Evolution* 59: 1245–1258.
- Bell CD, Soltis DE, Soltis PS. 2010. The age and diversification of the angiosperms re-revisited. *American Journal of Botany* 97: 1296–1303.
- Bitencourt C, Rapini A. 2013. Centres of endemism in the espinhaço range: identifying cradles and museums of Asclepiadoideae (Apocynaceae). *Systematics and Biodiversity* 11: 525–536.
- Boyle B, Hopkins N, Lu Z, Raygoza Garay JA, Mozzherin D, Rees T, Matasci N, Narro ML, Piel WH, McKay SJ *et al.* 2013. The taxonomic name resolution service: an online tool for automated standardization of plant names. *BMC Bioinformatics* 14: 16.
- Brenan JPM. 1978. Some aspects of the phytogeography of tropical Africa. *Annals of the Missouri Botanical Garden* 65: 437–478.
- Bruchmann I, Hobohm C. 2014. Factors that create and increase endemism. In: Hobohm C, ed. *Plant and vegetation. Endemism in vascular plants*. Dordrecht, the Netherlands: Springer, 51–68.
- Burgess ND, Butynski TM, Cordeiro NJ, Doggart NH, Fjeldsø J, Howell KM, Kilahama FB, Loader SP, Lovett JC, Mbilinyi B *et al.* 2007. The biological importance of the Eastern Arc Mountains of Tanzania and Kenya. *Biological Conservation* 134: 209–231.
- Couvreur TLP. 2015. Odd man out: why are there fewer plant species in African rain forests? *Plant Systematics and Evolution* 301: 1299–1313.
- Cowling RM, Pressey RL. 2001. Rapid plant diversification: planning for an evolutionary future. *Proceedings of the National Academy of Sciences, USA* 98: 5452–5457.
- Crisp MD, Laffan S, Linder HP, Monro A. 2001. Endemism in the Australian flora. *Journal of Biogeography* 28: 183–198.
- Dauby G, Zaiss R, Overgaard A-B, Catarino L, Damen T, Deblauwe V, Dessein S, Dransfield J, Droissart V, Duarte MC *et al.* 2016. RAINBIO: a mega-database of tropical African vascular plants distributions. *PhytoKeys* 74: 1–18.
- De Block P, Razafimandimbison SG, Janssens S, Ochoterena H, Robbrecht E, Bremer B. 2015. Molecular phylogenetics and generic assessment in the tribe Pavetteae. *Taxon* 64: 79–95.
- Diamond AW, Hamilton AC. 1980. The distribution of forest passerine birds and Quaternary climatic change in tropical Africa. *Journal of Zoology* 191: 379–402.
- Dimitrov D, Nogués-Bravo D, Scharff N. 2012. Why do tropical mountains support exceptionally high biodiversity? The eastern arc mountains and the drivers of Saintpaulia diversity. *PLoS ONE* 7: e48908.
- Droissart V, Dauby G, Hardy OJ, Deblauwe V, Harris DJ, Janssens S, Mackinder BA, Blach-Overgaard A, Sonké B, Sosef MSM *et al.* 2018. Beyond trees: Biogeographical regionalization of tropical Africa. *Journal of Biogeography* 45: 1153–1167.
- Faith DP. 1992. Conservation evaluation and phylogenetic diversity. *Biological Conservation* 61: 1–10.
- Faith DP, Magallón S, Hendry AP, Conti E, Yahara T, Donoghue MJ. 2010. Ecosystem services: an evolutionary perspective on the links between biodiversity and human well-being. *Current Opinion in Environmental Sustainability* 2: 66–74.
- Fayolle A, Swaine MD, Bastin J-F, Bourland N, Comiskey JA, Dauby G, Doucet J-L, Gillet J-F, Gourlet-Fleury S, Hardy OJ *et al.* 2014. Patterns of tree species composition across tropical African forests. *Journal of Biogeography* 41: 2320–2331.
- Ferreira PMA, Boldrini II. 2011. Potential reflection of distinct ecological units in plant endemism categories. *Conservation Biology* 25: 672–679.
- Fjeldsø J. 1994. Geographical patterns for relict and young species of birds in Africa and South America and implications for conservation priorities. *Biodiversity & Conservation* 3: 207–226.
- Fjeldsø J, Bowie RCK. 2008. New perspectives on the origin and diversification of Africa's forest avifauna. *African Journal of Ecology* 46: 235–247.
- Fjeldsø J, Bowie RCK, Rahbek C. 2012. The role of mountain ranges in the diversification of birds. *Annual Review of Ecology, Evolution, and Systematics* 43: 249–265.
- Fjeldsø J, Lovett JC. 1997. Geographical patterns of old and young species in African forest biota: the significance of specific montane areas as evolutionary centres. *Biodiversity & Conservation* 6: 325–346.
- Fjeldsø J, Rahbek C. 2006. Diversification of tanagers, a species rich bird group, from lowlands to montane regions of South America. *Integrative and Comparative Biology* 46: 72–81.
- Forest F, Crandall KA, Chase MW, Faith DP. 2015. Phylogeny, extinction and conservation: embracing uncertainties in a time of urgency. *Philosophical Transactions of the Royal Society B: Biological Sciences* 370: 20140002.
- Forest F, Grenyer R, Rouget M, Davies TJ, Cowling RM, Faith DP, Balmford A, Manning JC, Procheş Ş, van der Bank M *et al.* 2007. Preserving the evolutionary potential of floras in biodiversity hotspots. *Nature* 445: 757–760.
- Grey-Wilson C. 1980. *Impatiens of Africa*. Rotterdam, the Netherlands: A. A. Balkema.
- Guillocheau F, Simon B, Baby G, Bessin P, Robin C, Dauteuil O. 2018. Planation surfaces as a record of mantle dynamics: the case example of Africa. *Gondwana Research* 53: 82–98.
- Hewitt G. 2000. The genetic legacy of the Quaternary ice ages. *Nature* 405: 907–913.
- Hinchliff CE, Smith SA. 2014. Some limitations of public sequence data for phylogenetic inference (in plants). *PLoS ONE* 9: e98986.
- Hoorn C, Mosbrugger V, Mulch A, Antonelli A. 2013. Biodiversity from mountain building. *Nature Geoscience* 6: 154.
- Hoorn C, Wesselingh FP, ter Steege H, Bermudez MA, Mora A, Sevink J, Sanmartín I, Sanchez-Meseguer A, Anderson CL, Figueiredo JP *et al.* 2010. Amazonia through time: Andean uplift, climate change, landscape evolution, and biodiversity. *Science* 330: 927–931.
- Hughes C, Eastwood R. 2006. Island radiation on a continental scale: Exceptional rates of plant diversification after uplift of the Andes. *Proceedings of the National Academy of Sciences, USA* 103: 10334–10339.
- Humphreys AM, Govaerts R, Ficinski SZ, Nic Lughadha E, Vorontsova MS. 2019. Global dataset shows geography and life form predict modern

- plant extinction and rediscovery. *Nature Ecology & Evolution* 3: 1043–1047.
- Huntley JW, Voelker G. 2016. Cryptic diversity in Afro-tropical lowland forests: The systematics and biogeography of the avian genus *Bleda*. *Molecular Phylogenetics and Evolution* 99: 297–308.
- IUCN. 2008. *Guidelines for applying protected area management categories* (Dudley N, ed.). Gland, Switzerland: IUCN.
- Jacobs BF. 2004. Palaeobotanical studies from tropical Africa: relevance to the evolution of forest, woodland and savannah biomes. *Philosophical Transactions of the Royal Society B: Biological Sciences* 359: 1573–1583.
- Janssens S, Couvreur TLP, Mertens A, Dauby G, Dagallier L-P, Abele SV, Vandeloek F, Mascarello M, Beeckman H, Sosef M *et al.* 2019. A large-scale species level dated angiosperm phylogeny for evolutionary and ecological analyses. *bioRxiv* 809921.
- Jetz W, Rahbek C, Colwell RK. 2004. The coincidence of rarity and richness and the potential signature of history in centres of endemism. *Ecology Letters* 7: 1180–1191.
- Katoh K, Misawa K, Kuma K, Miyata T. 2002. MAFFT: a novel method for rapid multiple sequence alignment based on fast Fourier transform. *Nucleic Acids Research* 30: 3059–3066.
- Kier G, Kreft H, Lee TM, Jetz W, Ibisch PL, Nowicki C, Mutke J, Barthlott W. 2009. A global assessment of endemism and species richness across island and mainland regions. *Proceedings of the National Academy of Sciences, USA* 106: 9322–9327.
- Kissling WD, Eiserhardt WL, Baker WJ, Borchsenius F, Couvreur TLP, Balslev H, Svenning J-C. 2012. Cenozoic imprints on the phylogenetic structure of palm species assemblages worldwide. *Proceedings of the National Academy of Sciences, USA* 109: 7379–7384.
- Klopper RR, Gautier L, Chatelain C, Smith GF, Spichiger R. 2007. Floristics of the angiosperm flora of Sub-Saharan Africa: an analysis of the African Plant Checklist and Database. *Taxon* 56: 201–208.
- Körner C, Jetz W, Paulsen J, Payne D, Rudmann-Maurer KM, Spehn E. 2017. A global inventory of mountains for bio-geographical applications. *Alpine Botany* 127: 1–15.
- Körner C, Paulsen J, Spehn EM. 2011. A definition of mountains and their bioclimatic belts for global comparisons of biodiversity data. *Alpine Botany* 121: 73.
- Kraft NJB, Baldwin BG, Ackerly DD. 2010. Range size, taxon age and hotspots of neoendemism in the California flora: California plant neoendemism. *Diversity and Distributions* 16: 403–413.
- Kruckeberg AR, Rabinowitz D. 1985. Biological aspects of endemism in higher plants. *Annual Review of Ecology and Systematics* 16: 447–479.
- Küper W, Sommer JH, Lovett JC, Mutke J, Linder HP, Beentje HJ, Van Rompaey RSAR, Chatelain C, Sosef M, Barthlott W. 2004. Africa's hotspots of biodiversity redefined. *Annals of the Missouri Botanical Garden* 91: 525–535.
- Laffan SW, Lubarsky E, Rosauer DF. 2010. Biodiverse, a tool for the spatial analysis of biological and related diversity. *Ecography* 33: 643–647.
- Linder HP. 2001. Plant diversity and endemism in sub-Saharan tropical Africa. *Journal of Biogeography* 28: 169–182.
- Linder HP. 2014. The evolution of African plant diversity. *Frontiers in Ecology and Evolution* 2: 1–14.
- Linder HP, de Klerk HM, Born J, Burgess ND, Fjeldsø J, Rahbek C. 2012. The partitioning of Africa: statistically defined biogeographical regions in sub-Saharan Africa: African regionalization. *Journal of Biogeography* 39: 1189–1205.
- Loarie SR, Duffy PB, Hamilton H, Asner GP, Field CB, Ackerly DD. 2009. The velocity of climate change. *Nature* 462: 1052–1055.
- López-Pujol J, Zhang F-M, Sun H-Q, Ying T-S, Ge S. 2011. Centres of plant endemism in China: places for survival or for speciation? *Journal of Biogeography* 38: 1267–1280.
- Lovett JC, Marchant R, Taplin J, Küper W. 2005. The oldest rainforests in Africa: Stability or resilience for survival and diversity? In: Purvis A, Gittleman JL, Brooks T, eds. *Phylogeny and conservation*. Cambridge, UK: Cambridge University Press, 198–229.
- Lovett JC, Rudd S, Taplin J. 2000. Patterns of plant diversity in Africa south of the Sahara and their implications for conservation management. *Biodiversity and Conservation* 9: 37–46.
- Mace GM, Gittleman JL, Purvis A. 2003. Preserving the tree of life. *Science* 300: 1707–1709.
- Magallón S, Gómez-Acevedo S, Sánchez-Reyes LL, Hernández-Hernández T. 2015. A metacalibrated time-tree documents the early rise of flowering plant phylogenetic diversity. *New Phytologist* 207: 437–453.
- Maley J. 1996. The African rain forest: main characteristics of changes in vegetation and climate from the Upper Cretaceous to the Quaternary (IJ Alexander, MD Swaine, and R Watling, Eds.). *Proceedings of the Royal Society of Edinburgh, Section B* 104: 31–73.
- Malhi Y, Adu-Bredu S, Asare RA, Lewis SL, Mayaux P. 2013. African rainforests: past, present and future. *Philosophical Transactions of the Royal Society B: Biological Sciences* 368.
- McNeely JA, Miller KR, Reid W, Mittermeier RA, Werner TB. 1990. *Conserving the world's biological diversity* (International Union for Conservation of Nature and Natural Resources, Ed.). Gland, Switzerland, and Washington, DC, USA: International Union for Conservation of Nature and Natural Resources; World Resources Institute; Conservation International; World Wildlife Fund-US; World Bank.
- Merckx VSFT, Hendriks KP, Beentjes KK, Mennes CB, Becking LE, Peijnenburg KTCA, Afendy A, Arumugam N, de Boer H, Biun A *et al.* 2015. Evolution of endemism on a young tropical mountain. *Nature* 524: 347–350.
- Mishler BD, Knerr N, González-Orozco CE, Thornhill AH, Laffan SW, Miller JT. 2014. Phylogenetic measures of biodiversity and neo- and paleo-endemism in Australian Acacia. *Nature Communications* 5: 4473.
- Moore MJ, Bell CD, Soltis PS, Soltis DE. 2007. Using plastid genome-scale data to resolve enigmatic relationships among basal angiosperms. *Proceedings of the National Academy of Sciences, USA* 104: 19363–19368.
- Moritz C, Funk V, Sakai AK. 2002. Strategies to protect biological diversity and the evolutionary processes that sustain it. *Systematic Biology* 51: 238–254.
- Muasya AM, Simpson DA, Verboom CA, Goetghebeur P, Naczi RFC, Chase MW, Smets E. 2009. Phylogeny of cyperaceae based on DNA sequence data: current progress and future prospects. *Botanical Review* 75: 2–21.
- Muellner-Riehl AN. 2019. Mountains as evolutionary arenas: patterns, emerging approaches, paradigm shifts, and their implications for plant phylogeographic research in the Tibeto-Himalayan region. *Frontiers in Plant Science* 10: 195.
- Murienne J, Benavides LR, Prendini L, Hormiga G, Giribet G. 2013. Forest refugia in Western and Central Africa as 'museums' of Mesozoic biodiversity. *Biology Letters* 9: 20120932.
- Myers N, Mittermeier RA, Mittermeier CG, Da Fonseca GA, Kent J. 2000. Biodiversity hotspots for conservation priorities. *Nature* 403: 853–858.
- Nekola JC. 1999. Paleoreugia and neoreugia: the influence of colonization history on community pattern and process. *Ecology* 80: 2459–2473.
- Olson DM, Dinerstein E, Wikramanayake ED, Burgess ND, Powell GVN, Underwood EC, D'amico JA, Itoua I, Strand HE, Morrison JC *et al.* 2001. Terrestrial ecoregions of the world: a new map of life on earth. *BioScience* 51: 933.
- Peterson DL, Schreiner EG, Buckingham NM. 1997. Gradients, vegetation and climate: spatial and temporal dynamics in the Olympic Mountains, U.S.A. *Global Ecology and Biogeography Letters* 6: 7.
- Plana V. 2004. Mechanisms and tempo of evolution in the African Guineo-Congolian rainforest. *Philosophical Transactions of the Royal Society B: Biological Sciences* 359: 1585–1594.
- Plana V, Gascoigne A, Forrest LL, Harris D, Pennington RT. 2004. Pleistocene and pre-Pleistocene Begonia speciation in Africa. *Molecular Phylogenetics and Evolution* 31: 449–461.
- Plumptre AJ, Davenport TRB, Behangana M, Kityo R, Eilu G, Ssegawa P, Ewango C, Meirte D, Kahindo C, Herremans M *et al.* 2007. The biodiversity of the Albertine Rift. *Biological Conservation* 134: 178–194.
- Pollock LJ, Rosauer DF, Thornhill AH, Kujala H, Crisp MD, Miller JT, McCarthy MA. 2015. Phylogenetic diversity meets conservation policy: small areas are key to preserving eucalypt lineages. *Philosophical Transactions of the Royal Society B: Biological Sciences* 370: 20140007.
- Pollock LJ, Thuiller W, Jetz W. 2017. Large conservation gains possible for global biodiversity facets. *Nature* 546: 141–144.
- Qian H, Jin Y. 2016. An updated megaphylogeny of plants, a tool for generating plant phylogenies and an analysis of phylogenetic community structure. *Journal of Plant Ecology* 9: 233–239.

- Rahbek C, Borregaard MK, Antonelli A, Colwell RK, Holt BG, Nogues-Bravo D, Rasmussen CMØ, Richardson K, Rosing MT, Whittaker RJ *et al.* 2019. Building mountain biodiversity: Geological and evolutionary processes. *Science* 365: 1114–1119.
- Robbrecht E. 1996. Geography of African Rubiaceae with reference to glacial rain forest refuges. In: van der Maesen LJG, van der Burgt XM, van Medenbach de Rooy JM, eds. *The biodiversity of African plants: Proceedings XIVth AETFAT Congress 22–27 August 1994, Wageningen, the Netherlands*. Dordrecht, the Netherlands: Springer, 564–581.
- Rosauer D, Laffan SW, Crisp MD, Donnellan SC, Cook LG. 2009. Phylogenetic endemism: a new approach for identifying geographical concentrations of evolutionary history. *Molecular Ecology* 18: 4061–4072.
- Roy MS. 1997. Recent diversification in African greenbuls (Pycnonotidae: Andropadus) supports a montane speciation model. *Proceedings of the Royal Society of London B: Biological Sciences* 264: 1337–1344.
- Scherson RA, Thornhill AH, Urbina-Casanova R, Freyman WA, Pliscoff PA, Mishler BD. 2017. Spatial phylogenetics of the vascular flora of Chile. *Molecular Phylogenetics and Evolution* 112: 88–95.
- Schwery O, Onstein RE, Bouchenak-Khelladi Y, Xing Y, Carter RJ, Linder HP. 2014. As old as the mountains: the radiations of the Ericaceae. *New Phytologist* 207: 355–367.
- Sechrest W, Brooks TM, da Fonseca GA, Konstant WR, Mittermeier RA, Purvis A, Rylands AB, Gittleman JL. 2002. Hotspots and the conservation of evolutionary history. *Proceedings of the National Academy of Sciences, USA* 99: 2067–2071.
- Simoes AR, Staples G. 2017. Dissolution of Convolvulaceae tribe Merremieae and a new classification of the constituent genera. *Botanical Journal of the Linnean Society* 183: 561–586.
- Smith SA, Brown JW. 2018. Constructing a broadly inclusive seed plant phylogeny. *American Journal of Botany* 105: 1–13.
- Smith SA, O'Meara BC. 2012. treePL: divergence time estimation using penalized likelihood for large phylogenies. *Bioinformatics* 28: 2689–2690.
- Soltis PS, Soltis DE, Savolainen V, Crane PR, Barraclough TG. 2002. Rate heterogeneity among lineages of tracheophytes: Integration of molecular and fossil data and evidence for molecular living fossils. *Proceedings of the National Academy of Sciences, USA* 99: 4430–4435.
- Sosef MSM. 1996. Begonias and African rain forest refuges: general aspects and recent progress. In: van der Maesen LJG, van der Burgt XM, van Medenbach de Rooy JM, eds. *The biodiversity of African plants: Proceedings XIVth AETFAT Congress 22–27 August 1994, Wageningen, the Netherlands*. Dordrecht, the Netherlands: Springer, 602–611.
- Sosef MSM, Dauby G, Blach-Overgaard A, van der Burgt X, Catarino L, Damen T, Deblauwe V, Dessein S, Dransfield J, Droissart V *et al.* 2017. Exploring the floristic diversity of tropical Africa. *BMC Biology* 15: 1–23.
- Stamatakis A. 2006. RAxML-VI-HPC: maximum likelihood-based phylogenetic analyses with thousands of taxa and mixed models. *Bioinformatics (Oxford, England)* 22: 2688–2690.
- Stropp J, Ladle RJ, Malhado ACM, Hortal J, Gaffuri J, Temperley WH, Skoien JO, Mayaux P. 2016. Mapping ignorance: 300 years of collecting flowering plants in Africa. *Global Ecology and Biogeography* 25: 1085–1096.
- Swenson NG, Enquist BJ, Thompson J, Zimmerman JK. 2007. The influence of spatial and size scale on phylogenetic relatedness in tropical forest communities. *Ecology* 88: 1770–1780.
- Thornhill AH, Baldwin BG, Freyman WA, Nosratinia S, Kling MM, Morueta-Holme N, Madsen TP, Ackerly DD, Mishler BD. 2017. Spatial phylogenetics of the native California flora. *BMC Biology* 15: 96.
- Thornhill AH, Mishler BD, Knerr NJ, González-Orozco CE, Costion CM, Crayn DM, Laffan SW, Miller JT. 2016. Continental-scale spatial phylogenetics of Australian angiosperms provides insights into ecology, evolution and conservation. *Journal of Biogeography* 43: 2085–2098.
- Tolley KA, Tilbury CR, Measey GJ, Menegon M, Branch WR, Matthee CA. 2011. Ancient forest fragmentation or recent radiation? Testing refugial speciation models in chameleons within an African biodiversity hotspot: Palaeoendemic chameleon lineages in East Africa. *Journal of Biogeography* 38: 1748–1760.
- Tzedakis PC, Lawson IT, Frogley MR, Hewitt GM, Preece RC. 2002. Buffered tree population changes in a quaternary refugium: evolutionary implications. *Science* 297: 2044–2047.
- Voelker G, Outlaw RK, Bowie RCK. 2010. Pliocene forest dynamics as a primary driver of African bird speciation. *Global Ecology and Biogeography* 19: 111–121.
- Wasser SK, Lovett JC. 1993. Introduction to the biogeography and ecology of the rain forests of eastern Africa. In: Lovett JC, Wasser SK, eds. *Biogeography and Ecology of the rain forests of Eastern Africa*. Cambridge, UK: Cambridge University Press.
- Webb CO. 2000. Exploring the phylogenetic structure of ecological communities: an example for rain forest trees. *The American Naturalist* 156: 145–155.
- Webb CO, Ackerly DD, McPeck MA, Donoghue MJ. 2002. Phylogenies and community ecology. *Annual Review of Ecology and Systematics* 33: 475–505.
- Wen J, Zhang J, Nie Z-L, Zhong Y, Sun H. 2014. Evolutionary diversifications of plants on the Qinghai-Tibetan Plateau. *Frontiers in Genetics* 5: 4.
- White F. 1983. *The vegetation of Africa: a descriptive memoir to accompany the Unesco/AETFAT/UNSO vegetation map of Africa*. Paris, France: UNESCO.

Supporting Information

Additional Supporting Information may be found online in the Supporting Information section at the end of the article.

Fig. S1 Relationship between weighted endemism (WE) and genus richness (GR).

Fig. S2 Relationship between phylogenetic diversity (PD) and genus richness (GR).

Fig. S3 Map of observed phylogenetic diversity.

Fig. S4 Boxplot of the distributions of the mean ruggedness (in metres) of the SUs depending on their phylogenetic diversity (PD) significance class.

Fig. S5 Relationship between phylogenetic endemism (PE) and weighted endemism (WE).

Fig. S6 Maps of phylogenetic endemism.

Fig. S7 Maps of CANAPE results with different SU sizes.

Fig. S8 Boxplot of the distribution of the percentage of montane plots of the sampling units depending on their CANAPE category.

Fig. S9 Boxplot of the distribution of the percentage of overlap of the SUs with 'montane areas' depending on their CANAPE category.

Table S1 *P*-values resulting from the pairwise comparisons of mean ruggedness per sampling unit in each PD significance class.

Table S2 *P*-values resulting from the pairwise comparisons of mean elevation per sampling unit in each RPD significance class.

Table S3 *P*-values resulting from the pairwise comparisons of mean ruggedness per sampling unit in each CANAPE significance class.

Table S4 *P*-values resulting from the pairwise comparison of the percentage of montane plots of the sampling units depending on their CANAPE category.

Table S5 *P*-values resulting from the pairwise comparison of the distribution of the percentage of overlap of the SUs with 'montane areas' depending on their CANAPE category.

Table S6 Number of significant CANAPE SUs overlaid by at least one protected area.

Table S7 Surface intersection between significant CANAPE SUs and protected areas.

Please note: Wiley Blackwell are not responsible for the content or functionality of any Supporting Information supplied by the authors. Any queries (other than missing material) should be directed to the *New Phytologist* Central Office.



About *New Phytologist*

- *New Phytologist* is an electronic (online-only) journal owned by the New Phytologist Trust, a **not-for-profit organization** dedicated to the promotion of plant science, facilitating projects from symposia to free access for our Tansley reviews and Tansley insights.
- Regular papers, Letters, Research reviews, Rapid reports and both Modelling/Theory and Methods papers are encouraged. We are committed to rapid processing, from online submission through to publication 'as ready' via *Early View* – our average time to decision is <26 days. There are **no page or colour charges** and a PDF version will be provided for each article.
- The journal is available online at Wiley Online Library. Visit **www.newphytologist.com** to search the articles and register for table of contents email alerts.
- If you have any questions, do get in touch with Central Office (np-centraloffice@lancaster.ac.uk) or, if it is more convenient, our USA Office (np-usaoffice@lancaster.ac.uk)
- For submission instructions, subscription and all the latest information visit **www.newphytologist.com**