

# Incidence of switching to second-line antiretroviral therapy and associated factors in children with HIV: an international cohort collaboration



The Collaborative Initiative for Paediatric HIV Education and Research (CIPHER) Global Cohort Collaboration\*

## Summary

**Background** Estimates of incidence of switching to second-line antiretroviral therapy (ART) among children with HIV are necessary to inform the need for paediatric second-line formulations. We aimed to quantify the cumulative incidence of switching to second-line ART among children in an international cohort collaboration.

**Methods** In this international cohort collaboration study, we pooled individual patient-level data for children younger than 18 years who initiated ART (two or more nucleoside reverse-transcriptase inhibitors [NRTI] plus a non-NRTI [NNRTI] or boosted protease inhibitor) between 1993 and 2015 from 12 observational cohort networks in the Collaborative Initiative for Paediatric HIV Education and Research (CIPHER) Global Cohort Collaboration. Patients who were reported to be horizontally infected with HIV and those who were enrolled in trials of treatment monitoring, switching, or interruption strategies were excluded. Switch to second-line ART was defined as change of one or more NRTI plus either change in drug class (NNRTI to protease inhibitor or vice versa) or protease inhibitor change, change from single to dual protease inhibitor, or addition of a new drug class. We used cumulative incidence curves to assess time to switching, and multivariable proportional hazards models to explore patient-level and cohort-level factors associated with switching, with death and loss to follow-up as competing risks.

**Findings** At the data cutoff of Sept 16, 2015, 182 747 children with HIV were included in the CIPHER dataset, of whom 93 351 were eligible, with 83 984 (90·0%) from sub-Saharan Africa. At ART initiation, the median patient age was 3·9 years (IQR 1·6–6·9) and 82 885 (88·8%) patients initiated NNRTI-based and 10 466 (11·2%) initiated protease inhibitor-based regimens. Median duration of follow-up after ART initiation was 26 months (IQR 9–52). 3883 (4·2%) patients switched to second-line ART after a median of 35 months (IQR 20–57) of ART. The cumulative incidence of switching at 3 years was 3·1% (95% CI 3·0–3·2), but this estimate varied widely depending on the cohort monitoring strategy, from 6·8% (6·5–7·2) in settings with routine monitoring of CD4 (CD4% or CD4 count) and viral load to 0·8% (0·6–1·0) in settings with clinical only monitoring. In multivariable analyses, patient-level factors associated with an increased likelihood of switching were male sex, older age at ART initiation, and initial NNRTI-based regimen ( $p<0·0001$ ). Cohort-level factors that increased the likelihood of switching were higher-income country ( $p=0·0017$ ) and routine or targeted monitoring of CD4 and viral load ( $p<0·0001$ ), which was associated with a 166% increase in likelihood of switching compared with CD4 only monitoring (subdistributional hazard ratio 2·66, 95% CI 2·22–3·19).

**Interpretation** Our global paediatric analysis found wide variations in the incidence of switching to second-line ART across monitoring strategies. These findings suggest the scale-up of viral load monitoring would probably increase demand for paediatric second-line ART formulations.

**Funding** International AIDS Society-CIPHER, UK Medical Research Council.

**Copyright** © 2019 The Author(s). Published by Elsevier Ltd. This is an Open Access article under the CC BY 4.0 license.

## Introduction

In 2017, an estimated 1·8 million children (younger than 15 years) were living with HIV worldwide, of whom 52% had access to antiretroviral therapy (ART).<sup>1</sup> A concerted effort will be needed to achieve the ambitious UNAIDS 90-90-90 goals to end AIDS by 2020 among children: ensuring that 90% of children living with HIV are diagnosed, 90% of those diagnosed are on ART, and 90% of those on ART attain and maintain viral suppression.<sup>2</sup> Children and adolescents have persistently lagged behind adults in their progress towards the first two 90% targets,<sup>3</sup> leading to increased efforts to expand

access to HIV diagnosis and ART for children across a variety of clinical settings in several countries.<sup>4</sup> As more children receive ART and treatment programmes mature, development of strategies to meet the third 90% target of sustained viral suppression will be the long-term challenge. Achievement of this goal requires a comprehensive understanding of the durability of first-line ART regimens and patterns of switching to second-line ART across geographical regions and different country-income settings to ensure future treatment needs are met.<sup>5</sup>

The short-term effectiveness of ART in children is undisputed, with high survival, immune and growth

Lancet HIV 2019; 6: e105–15

This online publication has been corrected. The corrected version first appeared at [thelancet.com/hiv](http://thelancet.com/hiv) on January 28, 2020

See [Comment](#) page e71

\*Listed in the appendix

Correspondence to:  
Dr Intira Jeannie Collins, MRC Clinical Trials Unit at UCL, Institute of Clinical Trials and Methodology, University College London, London WC1V 6LJ, UK  
[jeannie.collins@ucl.ac.uk](mailto:jeannie.collins@ucl.ac.uk)

or  
Prof Kara Wools-Kaloustian, Division of Infectious Diseases, Department of Medicine, Indiana University School of Medicine, Indianapolis, IN 46202, USA  
[kwools@iu.edu](mailto:kwools@iu.edu)

See Online for appendix

### Research in context

#### Evidence before this study

We searched PubMed for studies published in English from database inception to Nov 16, 2017, that assessed the probability of switching to second-line antiretroviral therapy (ART) in children with HIV across geographical regions and under different monitoring strategies using the search terms “child”, “children”, OR “adolescent”; “HIV”, “antiretroviral therapy”, “switch”, AND “second-line”. We identified several clinical trials and several cohort studies that reported on the probability of switching that used various different definitions of switching. Few studies estimated the incidence of switching to second-line ART in children across several countries with different strategies of treatment monitoring. To our knowledge, no published global-level analysis of switching to second-line ART among children exists that uses a uniform definition of switching.

#### Added value of this study

This study provides the first global estimates of the incidence of switching to second-line ART, using individual patient-level

data for over 93 000 children across 52 countries. We found a low cumulative incidence of switching of 3·1% by 3 years after initiation of ART globally, but with significant variations across geographical regions and by treatment monitoring strategies. Compared with CD4 (CD4% or CD4 cell count) or clinical only monitoring, children in settings with routine or targeted monitoring of viral load were twice as likely to switch to second-line ART.

#### Implications of all the available evidence

As HIV treatment programmes mature, understanding patterns in the use of second-line ART is crucial to ensure future needs of paediatric treatment are met. The wide variations in the incidence of switching to second-line ART across regions and monitoring strategies highlight the need to assess the effect of low rates of switching and prolonged treatment failure before switching on clinical outcomes in children and the potential implications of expanding access to viral load testing on future use of second-line ART in resource-limited settings.

recovery, and the proportion of patients with a suppressed viral load at 12 months after initiation of ART ranging from 70% to 95%.<sup>6–8</sup> Comparatively less data are available on the durability of first-line ART and the use of second-line treatment in children. The PENPACT trial,<sup>9</sup> which comprised patients from predominately high-income countries, reported that 71% (188 of 266) of children remained on their first-line regimen 5 years after starting ART, compared with 95% or more of children in the CHER<sup>8</sup> and ARROW<sup>7</sup> trials that comprised children from Africa. Observational cohorts have reported wide variations in the probability of switching to second-line ART after treatment failure, with the definition of treatment failure varying between studies. One large South African observational cohort<sup>10</sup> reported that 19% of children (Kaplan-Meier estimate, 95% CI 18–21) had virological failure 3 years after initiation of ART. Among the 252 children with 1 year or more of follow-up after virological failure, 38% (95% CI 32–45) switched to second-line ART. In a west African cohort,<sup>11</sup> 322 (12%) of 2676 children with HIV had clinical-immunological failure after 24 months of ART, of whom 21 (7%) switched to second-line ART. Other cohort studies in Asia<sup>12</sup> and Europe<sup>13</sup> have reported a 17–23% probability of children switching to second-line ART by 5 years after initiation of ART. Comparison across these studies is difficult because of the heterogeneity of patients' characteristics, initial ART regimens, monitoring strategies, and the varying definitions of treatment failure and switching.

We aimed to provide the first global estimates of the incidence of switching to second-line ART among children with HIV using a uniform definition of switching, and to assess associated factors (ie, patient-level and

cohort-level factors). This analysis is a key step in understanding the use of second-line regimens globally and across programmes that operate under various strategies for treatment monitoring and guidelines for switching to second-line ART.

### Methods

#### Study design and population

In this international cohort collaboration study, we pooled data from the Collaborative Initiative for Paediatric HIV Education and Research (CIPHER) network. CIPHER is a global network of observational paediatric HIV cohorts. The collaboration includes 12 international networks: Baylor International Pediatric AIDS Initiative (BIPAI); European Pregnancy and Paediatric HIV Cohort Collaboration (EPPICC); the International Epidemiology Databases to Evaluate AIDS (IeDEA) Consortium, comprising IeDEA Asia-Pacific, IeDEA Central Africa, IeDEA East Africa, IeDEA Southern Africa, IeDEA West Africa, and Caribbean, Central and South America network (CCASAnet); International Maternal Pediatric Adolescent AIDS Clinical Trials (IMPAACT) 219C and P1074; Médecins Sans Frontières (MSF); Optimal Models (ICAP at Columbia University); and Pediatric HIV/AIDS Cohort Study (PHACS). The network covers 52 countries and most networks comprised multiple cohorts and each cohort included data from one or more clinics (primary care clinic, primary community clinic, or hospital).

We pooled individual participant-level data from the CIPHER dataset for patients younger than 10 years at enrolment (a proxy for perinatal HIV infection), younger than 18 years at initiation of a standard combination ART

regimen (ie, at least three antiretroviral drugs, including at least two nucleoside reverse-transcriptase inhibitors [NRTIs] plus either a non-NRTI [NNRTI] or a ritonavir-boosted protease inhibitor) between Jan 1, 1993, and Sept 1, 2015, and with 1 day or more of follow-up after initiation of ART. Patients who were reported to be horizontally infected and those enrolled in clinical trials of treatment monitoring, switching, or interruption strategies were excluded.

Individual patient-level data were sent to the University of Cape Town (Cape Town, South Africa) for data cleaning and data management using a standardised protocol based on the HIV Cohorts Data Exchange Protocol. The dataset was then sent to the University College London (London, UK) for analysis.

All participating networks received local ethics approvals to transfer anonymised data for this study. The pooling of data at the University of Cape Town was approved by the University of Cape Town Health Research Ethics Committee (UCT HREC [reference 264/2014]).

## Outcomes

The main study outcome was cumulative incidence of all-cause switching to second-line ART from first-line ART for any reason (hereafter referred to as switching). Switching was defined as change of one or more NRTI plus either change in drug class (NNRTI to protease inhibitor or vice versa) or protease inhibitor change, change from single to dual protease inhibitor, or addition of a new drug class. With this definition we endeavoured to capture major treatment changes because of treatment failure or major toxic side-effects of drugs and allow for comparisons with previous analyses of switching in children that used similar approaches.<sup>12,13</sup>

## Statistical analysis

We explored cohort-level and patient-level potential predictors for switching. We generated cohort-level factors, which were geographical region, treatment monitoring strategy, and country-income group. The geographical regions with eligible data were categorised as Europe, the USA, Asia, Latin America (ie, the Caribbean, and Central and South America), southern Africa, and the rest of sub-Saharan Africa. Southern Africa was defined as Botswana and South Africa and was considered separate from the rest of sub-Saharan Africa because lopinavir-based regimens were introduced in 2010 as first-line ART for children younger than 3 years in Botswana and South Africa and are not part of the standardised first-line regimen in the rest of sub-Saharan Africa, and Botswana and South Africa also had early roll-out of routine viral load monitoring in 2007–08,<sup>14,15</sup> unlike the rest of sub-Saharan Africa.<sup>16</sup>

Strategies for treatment monitoring were assigned at the cohort level according to the presence and frequency of measurements of CD4 (CD4% or CD4 count) and viral load. Cohorts were classified as having routine

monitoring of CD4 or viral load if more than 60% of children had one or more measurement of CD4 or viral load after initiation of ART and the median time between consecutive measurements was fewer than 60 weeks. Cohorts were classified as having targeted monitoring of CD4 or viral load if 5–60% of children had one or more measurements of CD4 or viral load after initiation of ART, or if more than 60% of children had one or more measurements but consecutive measures were more than 60 weeks apart. On the basis of these definitions, cohorts were classified into four groups: routine monitoring of CD4 and viral load, routine monitoring of CD4 and targeted monitoring of viral load, routine monitoring of CD4 only (<5% of children with viral load measurements), or clinical monitoring only (ie, targeted monitoring of CD4 only, or <5% of participants have measurements of CD4 and viral load). Country-income groups were assigned by use of the World Bank classification<sup>17</sup> (high-income and upper-middle-income, lower-middle-income, or low-income economies) at the median year of ART initiation in the cohort.

We investigated the following patient-level independent variables measured at ART initiation: sex, age (<3, 3–5, 6–9, and ≥10 years), known previous AIDS diagnosis (WHO stage 3–4 or US Centres for Disease Control and Prevention stage C; yes or no), initial ART regimen (protease inhibitor or NNRTI based), and calendar year (≤2004, 2005–2007, 2008–2010, and ≥2011). We also collected data on bodyweight and CD4% or CD4 count at initiation of ART where available.

We calculated the weight-for-age Z scores relative to the 1990 British Growth Reference values in Stata<sup>18</sup> (≤−2, >−2 to 0, and >0) and immunodeficiency for age with the WHO standard definition<sup>19</sup> based on CD4% or CD4 cell count. Conventionally, CD4% is reported for children younger than 5 years and CD4 count is reported for children aged 5 years and older. No immunodeficiency is defined as CD4% over 35% for those younger than 12 months, over 30% for those aged 12–35 months, or over 25% for those aged 36–59 months, and a CD4 count of over 500 cells per  $\mu\text{L}$  for those aged 5 years or older; mild immunodeficiency is defined as CD4% of 30–35% for those younger than 12 months, 25–30% for those aged 12–35 months, or 20–25% for those aged 36–59 months, and a CD4 count of 350–499 cells per  $\mu\text{L}$  for those aged 5 years or older; advanced immunodeficiency is defined as CD4% of 25–29% for those aged 12 months or younger, 20–24% for those aged 12–35 months, or 15–19% for those aged 36–59 months, and a CD4 count of 200–349 cells per  $\mu\text{L}$  for those aged 5 years or older; and severe immunodeficiency is defined as CD4% less than 25% for those younger than 12 months, less than 20% for those aged 12–35 months, or less than 15% for those aged 36–59 months, and a CD4 count of less than 200 cells per  $\mu\text{L}$  for those aged 5 years or older.

For the HIV Cohorts Data Exchange Protocol website see <http://www.hicdep.org>

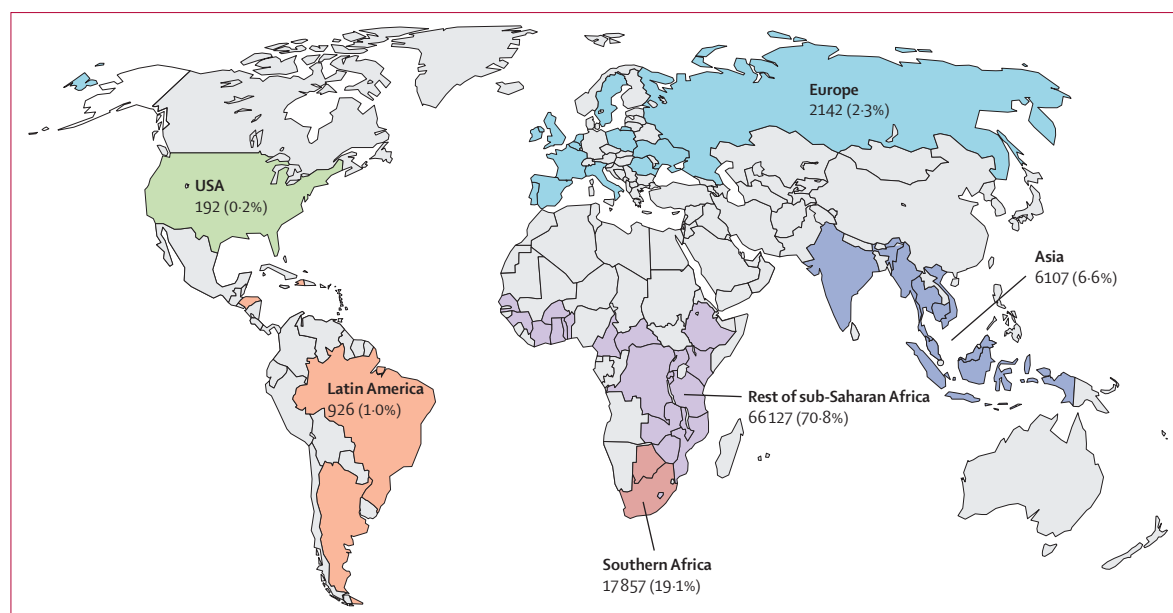


Figure 1: Geographical distribution of children with HIV included in study

We used descriptive statistics to illustrate the patient-level and cohort-level characteristics at ART initiation.

Patients were censored at the earliest of the following: switching to second-line ART, death, last visit, or 21st birthday. We summarised the cumulative incidence of switching allowing for the competing risks of death and loss to follow-up.<sup>20</sup> Cumulative incidence of switching at 3 years after initiation of ART was stratified by geographical region, initial ART regimen, and cohort monitoring strategy.

Patients were considered as lost to follow-up if they had no visit data for 1 year or more before our study data inclusion cutoff (Sept 16, 2015), except for cohorts in the EPPICC, PHACS, and IMPAACT networks, for which a cutoff of 2 years or more was used because data collection for these cohorts is done annually and to account for time lags in reporting. We administratively censored follow-up of children at the date of last clinic visit. Additionally, we administratively censored patients who transferred to a different clinical site not part of a participating cohort during their follow-up or if they were transferred to adult care.

We summarised the independent associations between cumulative incidence of switching and patient characteristics at initiation of ART and cohort characteristics by subdistribution hazard ratios calculated using multivariable competing-risks proportional hazards regression.<sup>21</sup>

Additionally, the number of children in southern Africa younger than 3 years at the time of initiating a lopinavir-based regimen who switched to an NNRTI-based second-line regimen aged 3 years or older is reported and their viral load at time of switching summarised.

We did two sensitivity analyses. First, to assess the potential association between low weight-for-age Z score, immunosuppression at initiation of ART, and likelihood of switching. We repeated the regression models using patient-level data from a subset of cohorts in which more than 60% of children had bodyweight and CD4 measurements at ART initiation, and did the multivariable analysis with and without weight-for-age Z score and immunodeficiency for age.

In the second sensitivity analysis, we repeated all analyses redefining switching to second-line ART by removing the requirement for a simultaneous change of one or more NRTI when changing across drug class (NNRTI to protease inhibitor or vice versa) or within the protease inhibitor drug class.

We did all analyses using Stata version 14.2.

### Role of the funding source

The funder of the study had no role in study design, data collection, data analysis, data interpretation, or writing of the report. The corresponding author had full access to all the data in the study and had final responsibility for the decision to submit for publication.

### Results

At the time of data cutoff, Sept 16, 2015, the CIPHER dataset comprised patient-level data on 182747 children living with HIV, of whom 93351 (51%) met our inclusion criteria (appendix p 20). 12 networks covering 52 countries in the CIPHER database had eligible children, and most children were in the rest of sub-Saharan Africa (71%), with 19.1% in southern Africa, 6.6% in Asia, and the remaining 3.5% in Europe, Latin America, and the USA (figure 1). The calendar year of ART initiation ranged

	USA (n=192)	Latin America (n=926)	Europe (n=2142)	Asia (n=6107)	Southern Africa (n=17 857)	Rest of sub-Saharan Africa (n=66 127)	Total (n=93 351)
Sex							
Male	89 (46.4%)	441 (47.6%)	1016 (47.4%)	3213 (52.6%)	9070 (50.8%)	33 236 (50.3%)	47 065 (50.4%)
Female	103 (53.7%)	485 (52.4%)	1126 (52.6%)	2894 (47.4%)	8784 (49.2%)	32 859 (49.7%)	46 251 (49.6%)
Missing data	0	0	0	0	3 (<0.1%)	32 (<0.1%)	35 (<0.1%)
Age, years							
Median	0.7 (0.2–3.4)	4.2 (1.6–7.3)	3.2 (0.7–7.0)	4.5 (2.3–7.0)	3.6 (1.1–6.8)	3.8 (1.7–6.9)	3.9 (1.6–6.9)
<3	138 (71.9%)	362 (39.1%)	1028 (48.0%)	1927 (31.6%)	8082 (45.3%)	27 856 (42.1%)	39 393 (42.2%)
3–5	34 (17.7%)	242 (26.1%)	447 (20.9%)	2068 (33.9%)	4127 (23.1%)	16 876 (25.5%)	23 794 (25.5%)
6–9	20 (10.4%)	244 (26.4%)	450 (21.0%)	1910 (31.3%)	4934 (27.6%)	19 042 (28.8%)	26 600 (28.5%)
≥10	0	78 (8.4%)	217 (10.1%)	202 (3.3%)	714 (4.0%)	2353 (3.6%)	3564 (3.8%)
CD4% (<5 years)*							
n (%)	92 (57.1%)	323 (61.5%)	995 (75.0%)	2208 (65.9%)	7315 (67.6%)	14 643 (37.0%)	25 576 (45.9%)
Median	32 (24–38)	19 (13–28)	23 (16–33)	15 (8–21)	17 (11–24)	16 (11–21)	16 (11–23)
CD4 cell count (≥5 years)*							
n (%)	21 (67.7%)	391 (97.5%)	718 (88.1%)	2381 (86.5%)	4753 (67.5%)	16 262 (61.2%)	24 526 (65.2%)
Median	409 (218–631)	335 (165–568)	330 (204–525)	195 (59–332)	308 (147–537)	306 (162–522)	297 (148–507)
Immunodeficiency for age†							
None	113 (58.9%)	714 (77.1%)	1718 (80.2%)	4693 (76.9%)	12 202 (68.3%)	31 452 (47.6%)	50 892 (54.5%)
Mild	45 (39.8%)	175 (24.5%)	463 (27.0%)	402 (8.6%)	1944 (15.9%)	5100 (16.2%)	8129 (16.0%)
Advanced	26 (23.0%)	76 (10.6%)	238 (13.9%)	375 (8.0%)	1081 (8.9%)	3005 (9.6%)	4801 (9.4%)
Severe	16 (14.2%)	126 (17.7%)	280 (16.3%)	803 (17.1%)	1474 (12.1%)	5303 (16.9%)	8002 (15.7%)
Known AIDS diagnosis	26 (23.0%)	337 (47.2%)	737 (42.9%)	3113 (66.3%)	7703 (63.1%)	18 044 (57.4%)	29 960 (58.9%)
Weight-for-age Z score†							
≤−2	20 (10.4%)	45 (4.9%)	368 (17.2%)	3526 (57.7%)	9910 (55.5%)	26 392 (39.9%)	40 261 (43.1%)
−2 to 0	95 (49.5%)	841 (90.8%)	1051 (49.1%)	5575 (91.3%)	11 610 (65.0%)	49 090 (74.2%)	68 262 (73.1%)
>0	19 (20.0%)	368 (43.8%)	168 (16.0%)	3664 (65.7%)	5498 (47.4%)	27 257 (55.5%)	36 974 (54.2%)
>2 to 0	52 (54.7%)	394 (46.9%)	486 (46.2%)	1644 (29.5%)	4911 (42.3%)	17 785 (36.2%)	25 272 (37.0%)
>0	24 (25.3%)	79 (9.4%)	397 (37.8%)	267 (4.8%)	1201 (10.3%)	4048 (8.3%)	6016 (8.8%)
Initial ART regimen							
NNRTI based	114 (59.4%)	827 (89.3%)	1194 (55.7%)	5850 (95.8%)	10 368 (58.1%)	64 532 (97.6%)	82 885 (88.8%)
Nevirapine	85 (44.3%)	277 (29.9%)	680 (31.8%)	4383 (71.8%)	885 (5.0%)	55 354 (83.7%)	61 664 (66.1%)
Efavirenz	28 (14.6%)	550 (59.4%)	514 (24.0%)	1467 (24.0%)	9483 (53.1%)	9178 (13.9%)	21 220 (22.7%)
Other NNRTI	1 (0.5%)	0	0	0	0	0	1 (<0.1%)
Protease inhibitor based	78 (40.6%)	99 (10.7%)	948 (44.3%)	257 (4.2%)	7489 (41.9%)	1595 (2.4%)	10 466 (11.2%)
Ritonavir-boosted lopinavir	66 (34.4%)	94 (10.2%)	895 (41.8%)	253 (4.1%)	7486 (41.9%)	1595 (2.4%)	10 389 (11.1%)
Other protease inhibitor	12 (6.3%)	5 (0.5%)	53 (2.5%)	4 (0.1%)	3 (<0.1%)	0	77 (0.1%)
Calendar year of ART initiation							
≤2004	152 (79.2%)	321 (34.7%)	643 (30.0%)	535 (8.8%)	1600 (9.0%)	1448 (2.2%)	4699 (5.0%)
2005–07	28 (14.6%)	207 (22.4%)	529 (24.7%)	1733 (28.4%)	5071 (28.4%)	15 639 (23.7%)	23 207 (24.9%)
2008–10	8 (4.2%)	218 (23.5%)	630 (29.4%)	1891 (31.0%)	7440 (41.7%)	26 433 (40.0%)	36 620 (39.2%)
≥2011	4 (2.1%)	180 (19.4%)	340 (15.9%)	1948 (31.9%)	3746 (21.0%)	22 607 (34.2%)	28 825 (30.9%)
Monitoring strategy							
Routine CD4 and viral load	192 (100%)	402 (43.4%)	2123 (99.1%)	3404 (55.7%)	17 857 (100%)	2005 (3.0%)	25 983 (27.8%)
Routine CD4 and targeted viral load	0	0	19 (0.9%)	2442 (40.0%)	0	14 246 (21.5%)	16 707 (17.9%)
Routine CD4 only	0	524 (56.6%)	0	260 (4.3%)	0	35 748 (54.1%)	36 532 (39.1%)
Clinical only	0	0	0	1 (<0.1%)	0	14 128 (21.4%)	14 129 (15.1%)
Country-income group							
Low	NA	524 (56.6%)	NA	2947 (48.3%)	NA	36 780 (55.6%)	40 251 (43.1%)
Lower-middle	NA	169 (18.3%)	390 (18.2%)	507 (8.3%)	NA	29 347 (44.4%)	30 413 (32.6%)
High and upper-middle	192 (100%)	233 (25.2%)	1752 (81.8%)	2653 (43.4%)	17 857 (100%)	0	22 687 (24.3%)

Data are n (%) or median (IQR), unless otherwise indicated. ART=antiretroviral therapy. NA=not applicable. NNRTI=non-nucleoside reverse-transcriptase inhibitor. \*CD4% is reported in children younger than 5 years and CD4 count is reported for children 5 years and older. The denominators for calculations of the proportion with a measurement are therefore in the subgroups younger than 5 years and aged 5 years and older. †CD4 data and bodyweight data only recorded in a subset of cohorts, and so the total number of participants, used as the denominator for the proportion calculation in each subcategory, for each region is supplied. The WHO immunosuppression-for-age measure uses all data available, both CD4% and CD4 cell count. Here we only report the median CD4% among those younger than 5 years and the median CD4 count in those aged 5 years or older, but many patients had both markers recorded.

**Table 1: Patient characteristics at time of ART initiation**



	USA (n=192)	Latin America (n=926)	Europe (n=2142)	Asia (n=6107)	Southern Africa (n=17 857)	Rest of sub-Saharan Africa (n=66 127)	Overall (n=93 351)
<b>Follow-up*</b>							
Median (IQR), months	41 (23-79)	52 (24-93)	49 (23-81)	38 (17-69)	29 (12-58)	24 (8-47)	26 (9-52)
Switched to second-line ART	72 (37.5%)	123 (13.3%)	464 (21.7%)	587 (9.6%)	1255 (7.0%)	1382 (2.1%)	3883 (4.2%)
Died	0	4 (0.4%)	3 (0.1%)	31 (0.5%)	17 (0.1%)	394 (0.6%)	449 (0.5%)
Lost to follow-up	15 (7.8%)	214 (23.1%)	235 (11.0%)	674 (11.0%)	3446 (19.3%)	13 688 (20.7%)	18 272 (19.6%)
Administrative censoring	105 (54.7%)	585 (63.2%)	1440 (67.2%)	4815 (78.8%)	13 139 (73.6%)	50 663 (76.6%)	70 747 (75.8%)
<b>Cumulative incidence switched by 3 years after start of ART</b>							
Overall	26.1% (20.0-32.7)	6.5% (4.9-8.3)	12.2% (10.8-13.7)	6.6% (5.9-7.3)	5.4% (5.1-5.9)	1.5% (1.4-1.6)	3.1% (3.0-3.2)
<b>Age at initiation of ART, years</b>							
<3 years	25.7% (18.5-33.4)	4.9% (2.9-7.6)	11.7% (9.8-13.9)	7.0% (5.8-8.3)	3.7% (3.2-4.2)	1.1% (0.9-1.2)	2.5% (2.3-2.7)
3-5	27.6% (13.7-43.3)	5.0% (2.7-8.5)	8.9% (6.4-12.0)	7.0% (5.8-8.4)	6.5% (5.7-7.4)	1.4% (1.2-1.6)	3.1% (2.9-3.4)
6-9	27.1% (9.8-48.0)	8.3% (5.1-12.4)	14.8% (11.5-18.4)	5.6% (4.5-6.9)	7.2% (6.3-8.1)	2.0% (1.8-2.3)	3.7% (3.4-4.0)
≥10	..	12.3% (5.7-21.6)	16.6% (11.5-22.5)	6.7% (2.7-13.5)	6.7% (4.5-9.5)	2.4% (1.7-3.4)	4.9% (4.0-5.9)
<b>Initial ART regimen</b>							
Protease inhibitor based	10.1% (4.4-18.5)	5.1% (1.6-11.6)	7.0% (5.4-8.8)	3.6% (1.6-7.1)	3.2% (2.7-3.7)	4.3% (3.2-5.7)	3.9% (3.4-4.3)
NNRTI based	37.0% (28.1-45.9)	6.6% (5.0-8.5)	16.1% (14.0-18.4)	6.6% (5.9-7.4)	7.0% (6.4-7.6)	1.4% (1.3-1.5)	3.0% (2.9-3.2)
<b>Monitoring strategy</b>							
Routine CD4 and viral load	26.1% (20.0-32.7)	7.7% (5.3-10.7)	12.3% (10.8-13.8)	8.7% (7.8-9.8)	5.4% (5.1-5.9)	6.1% (5.0-7.4)	6.8% (6.5-7.2)
Routine CD4 and targeted viral load	..	..	5.9% (0.4-23.5)	2.8% (2.0-3.7)	..	2.1% (1.8-2.4)	2.2% (1.9-2.4)
Routine CD4 only	..	5.5% (3.6-7.9)	..	3.5% (1.1-8.3)	..	1.1% (1.0-1.3)	1.2% (1.1-1.4)
Clinical only	..	..	..	..	..	0.8% (0.6-1.0)	0.8% (0.6-1.0)

Data are n (%) or cumulative incidence (95% CI), unless otherwise indicated. ART=antiretroviral therapy. NNRTI=non-nucleoside reverse-transcriptase inhibitor. \*Competing risk analysis, censored at the first of the following events: switched to second-line, death, loss to follow-up or date of last clinic visit (before transfer out or data cutoff).

**Table 2: Follow-up status and cumulative incidence of switch by 3 years after start of ART by geographical region**

from 1993 to 2015, with over 70% of children initiating ART in 2008 or later (table 1). Half of patients were male, and the median age at ART initiation was 3.9 years (IQR 1.6-6.9), with two-thirds aged 5 years or younger. The median age at ART initiation was similar across all regions, except for in the USA where the median age was younger than 1 year. 40 261 (43.1%) children had known AIDS diagnosis at ART initiation, and among 50 892 (54.5%) children with available CD4 data, 37 962 (74.6%) had advanced or severe immunodeficiency, with Asia and southern Africa having the highest proportions of patients with severe immunodeficiency.

82 885 (88.8%) children initiated an NNRTI-based regimen (61 664 [66.1%] on nevirapine), although regional variations were observed (table 1; appendix p 21). In southern Africa, 6803 (84%) of 8082 patients younger than 3 years at ART initiation were initiated on a ritonavir-boosted lopinavir-based regimen compared with 1262 (4.5%) of 27 856 in the rest of sub-Saharan Africa (appendix p 22).

Strategies for treatment monitoring also varied between the geographical regions. In the USA, Europe, and southern Africa, almost all patients were in cohorts with routine monitoring of CD4 and viral load, whereas in Asia 56% of patients were in cohorts with routine monitoring of CD4 and viral load and 40% were in cohorts with routine monitoring of CD4 and targeted

monitoring of viral load. In the rest of sub-Saharan Africa, only 3.0% of patients were in cohorts with routine monitoring of CD4 and viral load, equal proportions of patients (21.4%) were in cohorts with routine monitoring of CD4 and targeted monitoring of viral load and in cohorts with clinical monitoring only, and 54.1% were in cohorts with only CD4 monitoring.

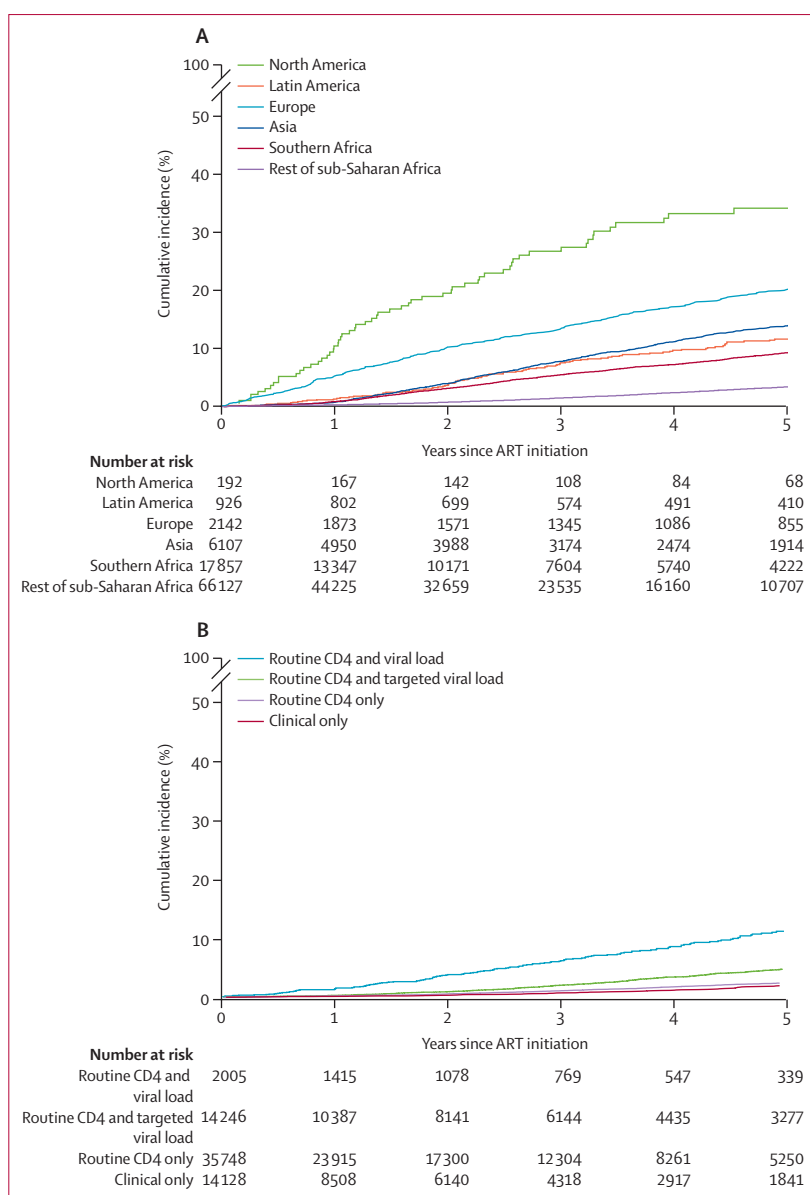
Median duration of follow-up after ART initiation was 26 months (IQR 9-52), with longer follow-up in regions outside of Africa (table 2). At data cutoff (without use of competing risks and ignoring switching to second-line ART) 5417 (5.8%) patients had died, 13 846 (14.8%) were lost to follow-up and not known to have died, 19 888 (21.3%) had transferred to another clinic or to adult care, and 54 200 (58.1%) were still in follow-up.

Over 265 942 person-years of follow-up, 4.2% of patients met our definition of switching to second-line ART, and on the basis of our competing-risk analysis 0.5% died, 19.6% were lost to follow-up, and 20.7% transferred before switching. The crude rate of switching was 14.6 switches per 1000 person-years (95% CI 14.1-15.1). The cumulative incidence of switching by 3 years after initiation of ART was 3.1% (95% CI 3.0-3.2), with wide variation between geographical region, initial regimen, and monitoring strategies (table 2, figure 2A). The cumulative incidences of switching by 1, 2, and 3 years after initiation of ART stratified by these variables

are shown in the appendix (pp 14–15). We found the highest incidence of switching to be among children who initiated ART on NNRTI-based regimens in the USA and the lowest incidence among children on NNRTI-based regimens in sub-Saharan Africa with CD4 or clinical only monitoring. Among children who started ART in 2011 or later, similar variations in the incidence of switching across treatment monitoring strategies was observed (appendix p 15). Because the rest of sub-Saharan Africa was the only region that used all four types of monitoring strategy, we further explored the cumulative incidence of switching within this region (figure 2B) and found the cumulative incidence of switching at 3 years to be 6·1% (95% CI 5·0–7·4) in cohorts with routine monitoring of CD4 and viral load compared with less than 2% (table 2) in cohorts with no viral load monitoring.

Among the 3883 children who switched to second-line ART, the median time to switch was 35 months (IQR 20–57; appendix pp 18–19). The median age at switch was 8·6 years (IQR 5·5–11·5), and 3329 (85·7%) switches were from an NNRTI-based to a protease inhibitor-based regimen, 419 (10·8%) were from a protease inhibitor-based to an NNRTI-based regimen, and 135 (3·5%) were other switches. Among children with recorded CD4% or CD4 cell counts at the time of switch (n=3016), 1265 (41·9%) had severe immunodeficiency and 359 (11·9%) had advanced immunodeficiency. Among the 2419 (62·3%) patients with measurements of viral load at the time of switching, 2013 (83·2%) had a viral load of more than 1000 copies per mL. 203 (5%) patients had a tuberculosis diagnosis at the time of switching. 75 children younger than 3 years at the start of lopinavir-based first-line ART switched to an NNRTI-based second-line ART when older than 3 years and while virally suppressed to under 1000 copies per mL. Among the 2219 (57%) patients with a reported reason for switching, 1132 (51%) switched because of treatment failure, 67 (3%) because of toxic side-effects of drugs, and 1020 (46%) because of other (unspecified) reasons.

In our multivariable analyses, individual patient-level factors associated with an increased likelihood of switching were male sex, older age at ART initiation, initiation of ART on an NNRTI-based regimen, and earlier calendar year of initiation of ART (table 3). In the multivariable analysis of cohort-level factors associated with switching, treatment monitoring strategy was identified as a factor. Compared with monitoring of CD4 only, routine CD4 and viral load monitoring was associated with a 166% increase in the likelihood of switching, whereas clinical only monitoring was associated with a 32% decrease in likelihood (table 3). High-income and upper-middle-income countries were associated with an increased likelihood of switching compared with low-income countries. All geographical regions outside of Africa had increased likelihoods of switching compared with southern Africa, whereas we saw no difference between southern Africa and the rest of sub-Saharan Africa.



**Figure 2: Cumulative incidence of switching to second-line ART among children at 3 years after ART initiation** (A) Incidence by region. (B) Incidence by monitoring strategy for sub-Saharan Africa (excluding Botswana and South Africa) only at 3 years after ART initiation. ART=antiretroviral therapy.

In the first sensitivity analysis, which was restricted to patient-level data from a subset of cohorts that recorded CD4% or CD4 cell count and bodyweight at ART initiation in over 60% of participants (n=39724), the risk factors for switching remained consistent with the main analyses, except for some differences in the effect of the geographical region. Patients in the rest of sub-Saharan Africa had a decreased likelihood of switching compared with those in southern Africa. The association between country-level incomes was no longer present (table 3). Additionally, patients with severe immunodeficiency had an increased likelihood

	All children (main analysis; n=93 351)		Subset of cohorts that recorded CD4% or CD4 cell count and bodyweight at ART initiation (sensitivity analyses; n=39 724)		
	Univariable analysis	Multivariable analysis	Univariable analysis	Multivariable analysis, not including immunodeficiency for age and weight-for-age Z score	Multivariable analysis, including immunodeficiency for age and weight-for-age Z score
<b>Patient-level factors</b>					
Sex	p<0.0001	p<0.0001	p<0.0001	p<0.0001	p<0.0001
Female vs male	0.79 (0.74–0.84)	0.78 (0.73–0.83)	0.80 (0.75–0.86)	0.79 (0.74–0.84)	0.81 (0.74–0.88)
Age, years	p<0.0001	p<0.0001	p<0.0001	p<0.0001	p<0.0001
<3	0.61 (0.56–0.66)	0.63 (0.58–0.68)	0.58 (0.54–0.63)	0.68 (0.62–0.74)	0.62 (0.54–0.70)
3–5	0.77 (0.71–0.84)	0.73 (0.67–0.79)	0.78 (0.71–0.85)	0.75 (0.69–0.82)	0.71 (0.64–0.79)
6–9	1	1	1	1	1
≥10	1.24 (1.11–1.51)	1.15 (0.98–1.35)	1.17 (1.00–1.37)	1.17 (0.99–1.38)	1.26 (1.05–1.51)
Known AIDS diagnosis	p=0.16	p=0.10	p=0.16	p=0.87	p=0.96
Yes vs no	0.96 (0.90–1.02)	0.95 (0.88–1.01)	1.05 (0.98–1.12)	1.01 (0.94–1.08)	1.00 (0.88–1.16)
Immunodeficiency for age	..	..	p<0.0001	..	p<0.0001
None	..	..	1.07 (0.90–1.27)	..	0.91 (0.75–1.10)
Mild	..	..	1.21 (1.00–1.46)	..	1.16 (0.85–1.43)
Advanced	..	..	1	..	1
Severe	..	..	1.39 (1.21–1.58)	..	1.40 (1.21–1.62)
Weight-for-age Z score	..	..	p=0.38	..	p=0.17
≤−2	..	..	0.95 (0.87–1.03)	..	1.07 (0.97–1.17)
>−2 to 0	..	..	1	..	1
>0	..	..	1.00 (0.87–1.16)	..	0.93 (0.80–1.09)
Initial ART regimen	p=0.004	p<0.0001	p<0.0001	p<0.0001	p<0.0001
Protease inhibitor based vs NNRTI based	1.15 (1.05–1.26)	0.70 (0.63–0.79)	0.68 (0.61–0.76)	0.51 (0.45–0.58)	0.58 (0.49–0.68)
Calendar year	p<0.0001	p<0.0001	p<0.0001	p<0.0001	p<0.0001
≤2004	2.96 (2.70–3.24)	1.39 (1.26–1.53)	2.28 (2.08–2.51)	1.41 (1.27–1.56)	1.41 (1.24–1.61)
2005–07	1.45 (1.35–1.57)	1.26 (1.17–1.36)	1.27 (1.17–1.38)	1.18 (1.08–1.28)	1.18 (1.07–1.30)
2008–10	1	1	1	1	1
≥2011	0.55 (0.47–0.63)	0.61 (0.53–0.71)	0.49 (0.41–0.58)	0.53 (0.44–0.62)	0.59 (0.48–0.73)
<b>Cohort-level factors</b>					
Cohort monitoring strategy	p<0.0001	p<0.0001	p<0.0001	p<0.0001	p<0.0001
Routine CD4 and viral load	4.57 (4.18–5.00)	2.66 (2.22–3.19)	2.81 (2.55–3.10)	1.90 (1.60–2.26)	2.37 (1.94–2.89)
Routine CD4 and targeted viral load	2.18 (1.95–2.43)	1.95 (1.75–2.18)	1.29 (1.15–1.45)	1.29 (1.13–1.46)	1.43 (1.24–1.66)
Routine CD4 only	1	1	1	1	1
Clinical only	0.75 (0.62–0.91)	0.68 (0.56–0.83)	..	..	..
Country-income group	p<0.0001	p=0.0017	p<0.0001	p=0.22	p=0.44
Low	1	1	1	1	1
Lower-middle	1.04 (0.94–1.14)	1.09 (0.98–1.21)	1.01 (0.90–1.12)	1.09 (0.96–1.20)	1.01 (0.88–1.16)
High and upper-middle	3.21 (2.98–3.47)	1.33 (1.13–1.56)	2.26 (2.09–2.46)	1.14 (0.97–1.33)	0.87 (0.71–1.08)
Geographical region	p<0.0001	p<0.0001	p<0.0001	p<0.0001	p<0.0001
USA	4.16 (3.20–5.42)	4.04 (3.07–5.32)	3.01 (1.84–4.93)	2.73 (1.63–4.58)	4.39 (2.28–8.46)
Europe	2.30 (2.07–2.56)	2.22 (1.97–2.49)	2.05 (1.83–2.29)	1.84 (1.63–2.09)	2.22 (1.87–2.63)
Latin America	1.23 (1.03–1.49)	1.73 (1.40–2.15)	1.28 (1.05–1.55)	1.59 (1.27–2.00)	1.88 (1.46–2.42)
Asia	1.27 (1.15–1.40)	1.38 (1.23–1.54)	1.18 (1.07–1.31)	1.06 (0.94–1.18)	0.86 (0.74–1.01)
Southern Africa	1	1	1	1	1
Rest of sub-Saharan Africa	0.35 (0.33–0.38)	0.89 (0.74–1.07)	0.47 (0.44–0.52)	0.69 (0.57–0.83)	0.66 (0.52–0.84)
Data are subdistributional hazard ratios (95% CIs) unless otherwise stated. CD4 means CD4% or CD4 cell count. ART=antiretroviral therapy. NNRTI=non-nucleoside reverse transcriptase inhibitor.					
<b>Table 3: Factors associated with switching to second-line ART</b>					



of switching compared with those with advanced immunodeficiency, but we saw no association between switching and weight-for-age Z score at initiation of ART.

In the second sensitivity analysis that broadened the definition of switching, the number of patients who met the definition increased from 3883 (4·2%) to 4035 (4·3%). Most of the additional switches were from an NNRTI-based to a protease inhibitor-based regimen. Factors associated with switching and hazard estimates were broadly similar to those identified in the main analyses (appendix pp 16–17).

## Discussion

The incidence of switching to second-line ART among children with HIV<sup>22</sup> was 14·6 switches per 1000 person-years with a cumulative incidence of 3·1% by 3 years after initiation of ART. However, we identified large variations between individual patient characteristics, geographical regions, and by cohort monitoring strategies.

3 years after initiation of ART, the cumulative incidence of switching was lowest among patients in cohorts in the rest of sub-Saharan Africa with clinical only monitoring, and was only slightly increased in this region when monitoring of CD4 was available. These estimates are lower than the median proportion of patients who switched after 4 years of follow-up reported in the ARROW trial (63 [5%] of 1206),<sup>7</sup> which was conducted in the rest of sub-Saharan Africa where all patients initiated NNRTI-based regimens and were managed with only clinical or CD4 monitoring. However, because ARROW is a clinical trial, patients were followed up more closely than they might be in routine care, and the median duration of follow-up in ARROW (4 years [IQR 3·7–4·4]) was longer than in our cohort. WHO forecasting models estimate that the proportion of children with HIV on ART globally who are receiving second-line regimens, irrespective of duration on ART, was 4·1% in 2013 and increased to 6·1% in 2015.<sup>22</sup> However, these estimates are cross-sectional and based on extrapolations from historical trends in global antiretroviral procurement data and projections from assumptions regarding ART coverage. Therefore, the estimates cannot be directly compared with our estimates of cumulative incidence of switching to second-line ART at 3 years after initiation of ART.

In our analysis, patients who were managed in settings that monitored their viral load were twice as likely to switch to second-line ART compared with children in settings that only had access to CD4 or clinical monitoring, or both. This finding is consistent with findings from adult HIV modelling studies<sup>23</sup> that estimate that the number of patients receiving second-line ART in settings with rapid scale-up of viral load monitoring will increase two to three times compared with slow or no scale-up of viral load monitoring.

Studies<sup>24,25</sup> have reported that 20–40% of children with only clinical or CD4 monitoring had evidence

of virological failure (viral load  $\geq 1000$  copies per mL) at 3–4 years after initiation of ART, highlighting the poor sensitivity of these monitoring strategies in detecting virological failure. This issue is particularly important in sub-Saharan Africa where most children initiate ART on NNRTI-based regimens with low genetic thresholds for resistance.<sup>26</sup> Although the PENPACT-1 trial<sup>9</sup> reported no difference in clinical outcomes of children on NNRTI-based or protease inhibitor-based regimens who were assigned to switch to second-line ART after virological failure at over 1000 copies per mL (early switch) or at over 10 000 copies per mL (delayed switch), adult studies<sup>27,28</sup> in sub-Saharan Africa have shown increased risks of morbidity and mortality in patients with delayed switching to second-line ART. A comparison of the clinical outcomes of children managed under a variety of monitoring strategies and time between treatment failure and switching is warranted to determine the best use of resources to obtain optimal outcomes in this population.

In our study, we estimated that most regions had a higher cumulative incidence of switching to second-line ART among children who initiated an NNRTI-based regimen than among those who initiated a protease inhibitor-based regimen. However, in the rest of sub-Saharan Africa we estimated a higher cumulative incidence of switching among children who initiated protease inhibitor-based regimens than those who initiated NNRTI-based regimens, although this estimate was based on a small proportion of children starting on protease inhibitors in that region (2·4%, all ritonavir-boosted lopinavir). Review of these data indicates that our finding might be partly because of incident tuberculosis and the need to avoid protease inhibitors when initiating a tuberculosis treatment regimen containing rifampin. Because the tuberculosis data were incompletely reported, we could not completely explore this hypothesis. The finding that older age at initiation of ART is associated with an increased likelihood of switching has been previously reported<sup>11,13</sup> and could be partly due to the lack of available paediatric formulations for young children and poorer adherence among adolescents than among younger children. The increased incidence of switching among male patients has been previously reported in paediatric and adult cohorts,<sup>11,12,29</sup> and warrants further study.

Our analysis suggested that even after adjusting for monitoring strategy and patient-level characteristics, being in the rest of sub-Saharan Africa and in low-income countries remained independently associated with a decreased likelihood of switching to second-line therapy. The comparatively less frequent use of second-line ART in such settings, even when viral load monitoring was available, could partly be because of the higher thresholds for virological failure recommended by WHO for low-income and middle-income countries than for high-income and upper-middle-income countries.<sup>30</sup> This

finding could also reflect the paucity of access to second-line drugs and clinicians' fears about availability of subsequent third-line therapy, although these factors were not measured in our study.

The low global cumulative incidence of switching to second-line ART reported in our analysis, which was dominated by a large number of children in southern Africa and the rest of sub-Saharan Africa, reflects standard practice for those who initiated ART between 1993 and 2015 in participating programmes. Since 2015, scale-up of viral load monitoring has been ongoing and is likely to substantially increase the early detection of treatment failure and demand for second-line ART. However, the extent of the increase in demand for second-line ART across settings remains unclear and will still be subject to local resources and guidance. Although less guidance and data exist on the optimal use of the low-cost integrase inhibitor dolutegravir in second-line ART in children, its roll-out as first-line and second-line ART in adults will probably lead to increased call for its use in children.<sup>31</sup> Because our study spans a large age spectrum and time period, it provides crucial insight into how clinicians have assessed and responded to first-line treatment failure in children on ART to date. These insights can be of use both to forecast future paediatric ART needs and to identify settings in which the system might be failing children and potential points of intervention. Future assessments of the durability of first-line regimens in-line with when new drugs are rolled out will be crucial to ensure sufficient availability of paediatric formulations in the future.

This study had several limitations. First, few cohorts reported data on the reasons for ART switch, and among those that did report reasons almost half of the reasons were unspecified as other reasons. Furthermore, few cohorts had data on viral load at the time of switching, and so we could not elucidate whether the switch was because of treatment failure. However, because of our conservative definition of switching to second-line ART, we feel that most of the switches were true switches to second-line ART rather than minor treatment modifications or simplifications. Since 2010 in South Africa, guidelines have recommended to switch children aged 3 years and older to an NNRTI-based regimen if they were younger than 3 years at initiation of a lopinavir-based ART regimen and if they were virally suppressed.<sup>14</sup> We considered that this recommendation might lead to overestimation of switches among this population; however, only 75 children were switched in this manner while virally suppressed, and thus their potential misclassification would not substantially affect our findings. Second, this is an observational study with sources of potential bias such as the high proportion of children lost to follow-up, which has probably resulted in incomplete ascertainment of switching and deaths. This limitation has been addressed in part by our use of a competing-risk analyses. Third, AIDS diagnoses

might have been under-reported at initiation of ART in some low-income country settings because of restricted capacity for clinical diagnostics. Data are also incomplete on co-infections (eg, tuberculosis) and the availability of alternative antiretroviral drugs restricted our ability to explore possible reasons for the geographical variations in switching patterns. Finally, although this is a large global cohort collaboration, we are still extrapolating data from a finite number of cohorts to a global estimate.

In conclusion, we found that the cumulative incidence of switching to second-line ART varied widely between both geographical regions and by monitoring strategies. Given the maturing cohorts and expanding roll-out of viral load testing and new drugs, we anticipate that the use of second-line regimens will increase, although geographical variation will most likely persist for the foreseeable future. The effect of delayed versus fast switching to second-line ART after treatment failure on longer-term clinical outcomes and treatment options among children remain unclear and warrant further exploration.

#### Contributors

Corresponding authors IJC and KW-K and statisticians R Goodall and C Smith wrote the first draft of the Article, which was reviewed by all members of the Project Team and the Writing Committee on behalf of The Collaborative Initiative for Paediatric HIV Education and Research (CIPHER) Global Cohort Collaboration (for the full collaborator list see appendix pp 1–13).

#### Declaration of interests

We declare no competing interests.

#### Data sharing

Data are accessible in principle by applying to the Collaborative Initiative for Paediatric HIV Education and Research (CIPHER) Global Cohort Collaboration Data Centres. The CIPHER Global Cohort Collaboration is a multinetwork, multisite collaboration and this study combined data from different sites. The data do not belong to the CIPHER Global Cohort Collaboration itself; data ownership remains with the participating sites. Each site has approval from its own local Institutional Review Board to collect routine data on patients and to transfer those data anonymously to the CIPHER Global Cohort Collaboration Project University of Cape Town Research Centre (Cape Town, South Africa). For some sites and networks, Institutional Review Board approval for use of this data is restricted to the specific protocols approved to protect patient identities. Requests for access to data can be directed to the International AIDS Society CIPHER contact Samantha Hodgetts ([samantha.hodgetts@iasociety.org](mailto:samantha.hodgetts@iasociety.org)).

#### Acknowledgments

We thank all participating networks, clinics, clinic personnel, and patients who contributed data and made the Collaborative Initiative for Paediatric HIV Education and Research (CIPHER) Global Cohort Collaboration Time on First Line Project possible; a full list is in the appendix (pp 1–13). We also thank Martina Penazzato and Rohan Hazra for their guidance and support as part of the CIPHER Executive Committee, and Samantha Hodgetts for her administrative support. The study was sponsored by the International AIDS Society-CIPHER. CIPHER is made possible by support from founding sponsor ViiV Healthcare and Janssen. Funding details of the individual cohort networks are listed in the appendix (pp 2–3).

#### References

- UNAIDS. Global HIV statistics. Fact sheet July 2017. Joint United Nations Programme on HIV/AIDS, 2018. [http://www.unaids.org/sites/default/files/media\\_asset/UNAIDS\\_FactSheet\\_en.pdf](http://www.unaids.org/sites/default/files/media_asset/UNAIDS_FactSheet_en.pdf) (accessed Dec 11, 2018).

- 2 UNAIDS. 90-90-90 an ambitious treatment target to help end the AIDS epidemic 2014. Joint United Nations Programme on HIV/AIDS, March 3, 2017. [http://www.unaids.org/sites/default/files/media\\_asset/90-90-90\\_en.pdf](http://www.unaids.org/sites/default/files/media_asset/90-90-90_en.pdf) (accessed Dec 11, 2018).
- 3 Davies M-A, Pinto J, Bras M. Getting to 90-90-90 in paediatric HIV: what is needed? *J Int AIDS Soc* 2015; 18 (suppl 6): 20770.
- 4 Essajee S, Vojnov L, Penazzato M, et al. Reducing mortality in HIV-infected infants and achieving the 90-90-90 target through innovative diagnosis approaches. *J Int AIDS Soc* 2015; 18 (suppl 6): 20299.
- 5 Penazzato M, Palladino C, Sugandhi N. Prioritizing the most needed formulations to accelerate paediatric antiretroviral therapy scale-up. *Curr Opin HIV AIDS* 2017; 12: 369–76.
- 6 Ciaranello AL, Chang Y, Margulis AV, et al. Effectiveness of pediatric antiretroviral therapy in resource-limited settings: a systematic review and meta-analysis. *Clin Infect Dis* 2009; 49: 1915–27.
- 7 ARROW Trial Team. Routine versus clinically driven laboratory monitoring and first-line antiretroviral therapy strategies in African children with HIV (ARROW): a 5-year open-label randomised factorial trial. *Lancet* 2013; 381: 1391–403.
- 8 Cotton MF, Violari A, Otumbwe K, et al. Early time-limited antiretroviral therapy versus deferred therapy in South African infants infected with HIV: results from the children with HIV early antiretroviral (CHER) randomised trial. *Lancet* 2013; 382: 1555–63.
- 9 The PENPACT-1 (PENTA 9/PACTG 390) Study Team. First-line antiretroviral therapy with a protease inhibitor versus non-nucleoside reverse transcriptase inhibitor and switch at higher versus low viral load in HIV-infected children: an open-label, randomised phase 2/3 trial. *Lancet Infect Dis* 2011; 11: 273–83.
- 10 Davies MA, Moultrie H, Eley B, et al. Virologic failure and second-line antiretroviral therapy in children in South Africa—the leDEA Southern Africa collaboration. *J Acquir Immune Defic Syndr* 2011; 56: 270–78.
- 11 Desmonde S, Eboua FT, Malateste K, et al. Determinants of durability of first-line antiretroviral therapy regimen and time from first-line failure to second-line antiretroviral therapy initiation. *AIDS* 2015; 29: 1527–36.
- 12 Mohamed TJ, Teeraananchai S, Kerr S, et al. Short communication: impact of viral load use on treatment switch in perinatally HIV-infected children in Asia. *AIDS Res Hum Retroviruses* 2016; 33: 230–33.
- 13 European Pregnancy and Paediatric HIV Cohort Collaboration (EPPICC) study group in EuroCoord. Time to switch to second-line antiretroviral therapy in children with HIV in Europe and Thailand. *Clin Infect Dis* 2018; 66: 594–603.
- 14 Department of Health, Republic of South Africa. The South African antiretroviral treatment guidelines 2010. South African National AIDS Council. <http://apps.who.int/medicinedocs/documents/s19153en/s19153en.pdf> (accessed Dec 11, 2018).
- 15 Ministry of Health, Republic of Botswana. 2012 Botswana National HIV & AIDS treatment guidelines. Ministry of Health, Republic of Botswana, 2012. [https://aidsfree.usaid.gov/sites/default/files/tx\\_botswana\\_2012.pdf](https://aidsfree.usaid.gov/sites/default/files/tx_botswana_2012.pdf) (accessed Jan 15, 2019).
- 16 Stevens WS, Marshall TM. Challenges in implementing HIV load testing in South Africa. *J Infect Dis* 2010; 20 (suppl 1): S78–84.
- 17 The World Bank. World Bank Country and Lending groups. World Bank Group. <https://datahelpdesk.worldbank.org/knowledgebase/articles/906519-world-bank-country-and-lending-groups> (accessed Dec 11, 2018).
- 18 Vidmar SI, Cole TJ, Pan H. Standardizing anthropometric measures in children and adolescents with functions for ege: update. *Stata J* 2013; 13: 366–78.
- 19 WHO. WHO case definitions of HIV for surveillance and revised clinical staging and immunological classification of HIV-related disease in adults and children. Geneva: World Health Organization, 2007. <http://www.who.int/hiv/pub/guidelines/HIVstaging150307.pdf> (accessed Dec 11, 2018).
- 20 Geng EH, Odeny TA, Lyamuya RE, et al. Estimation of mortality among HIV-infected people on antiretroviral therapy treatment in east Africa: a sampling based approach in an observational, multisite, cohort study. *Lancet HIV* 2015; 2: e107–16.
- 21 Fine JP, Gray RJ. A proportional hazards model for the subdistribution of a competing risk. *J Am Stat Assoc* 1999; 94: 496–509.
- 22 WHO. AIDS medicines and diagnostics service. Combined global demand forecasts for antiretroviral medicines and HIV diagnostics in low- and middle-income countries from 2015 to 2020. Geneva: World Health Organization, 2016. <http://apps.who.int/iris/bitstream/10665/250088/1/9789241511322-eng.pdf?ua=1> (accessed Dec 11, 2018).
- 23 Estill J, Ford N, Salazar-Vizcaya L, et al. The need for second-line antiretroviral therapy in adults in sub-Saharan Africa up to 2030: a mathematical modelling study. *Lancet HIV* 2016; 3: e132–39.
- 24 Mossoro-Kpinde CD, Gody JC, Mboumba Bouassa RS, et al. High levels of virological failure with major genotypic resistance mutations in HIV-1-infected children after 5 years of care according to WHO-recommended 1st-line and 2nd-line antiretroviral regimens in the Central African Republic: a cross-sectional study. *Medicine (Baltimore)* 2017; 96: e6282.
- 25 Szubert AJ, Prendergast AJ, Spyer MJ, et al. Virological response and resistance among HIV-infected children receiving long-term antiretroviral therapy without virological monitoring in Uganda and Zimbabwe: observational analyses within the randomised ARROW trial. *PLoS Med* 2017; 14: e1002432.
- 26 Harrison L, Melvin A, Fiscus S, et al. HIV-1 drug resistance and second-line treatment in children randomized to switch at low versus higher RNA thresholds. *J Acquir Immune Defic Syndr* 2015; 70: 42–53.
- 27 Rohr JK, Ive P, Horsburgh CR, et al. Marginal structural models to assess delays in second-line HIV treatment initiation in South Africa. *PLoS One* 2016; 11: e0161469.
- 28 Ramadhani HO, Bartlett JA, Thielman NM, et al. The effect of switching to second-line antiretroviral therapy on the risk of opportunistic infections among patients infected with Human Immunodeficiency Virus in Northern Tanzania. *Open Forum Infect Dis* 2016; 3: ofw018.
- 29 Haas AD, Keiser O, Balestre E, et al. Monitoring and switching of first-line antiretroviral therapy in sub-Saharan Africa: collaborative analysis of adult treatment cohorts. *Lancet HIV* 2015; 2: e271–78.
- 30 WHO. Antiretroviral therapy for HIV infection in infants and children. Recommendations for a public health approach: 2010 revision. Geneva: World Health Organization, 2010. <https://www.who.int/hiv/pub/paediatric/infants2010/en/> (accessed Dec 11, 2018).
- 31 Vitoria M, Hill A, Ford N, et al. The transition to dolutegravir and other new antiretrovirals in low-income and middle-income countries: what are the issues? *AIDS* 2018; 32: 1551–61.

# THE LANCET HIV

## Supplementary appendix

This appendix formed part of the original submission and has been peer reviewed. We post it as supplied by the authors.

Supplement to: The Collaborative Initiative for Paediatric HIV Education and Research (CIPHER) Global Cohort Collaboration. Incidence of switching to second-line antiretroviral therapy and associated factors in children with HIV: an international cohort collaboration. *Lancet HIV* 2019; **6**: e105–15.

## APPENDIX

### The CIPHER Global Cohort Collaboration

#### Contributors:

**Project Team:** Intira J Collins¶ (MRC Clinical Trials Unit at University College London, London, UK), Kara Wools-Kaloustian¶ (Indiana University School of Medicine, Indianapolis, Indiana, USA), Ruth Goodall\* (MRC Clinical Trials Unit at University College London, London, UK), Colette Smith\* (UCL Institute of Global Health, London, UK), Elaine Abrams (ICAP-Columbia University Mailman School of Public Health, New York, New York, USA), Suna Balkan (Médecins Sans Frontières, France), Jihane Ben-Farhat (Epicentre, Médecins Sans Frontières, Paris, France), Mary-Ann Davies (University of Cape Town, Cape Town, South Africa), Andrew Edmonds (University of North Carolina at Chapel Hill, Chapel Hill, North Carolina, USA), Valérie Leroy (Inserm (French Institute of Health and Medical Research), Paris, France), Harriet Nuwagaba-Biribonwoha (ICAP-Columbia University Mailman School of Public Health, New York, New York, USA), Kunjal Patel (Harvard T. H. Chan School of Public Health, Boston, Massachusetts, USA), Mary E. Paul (Baylor International Pediatric AIDS Initiative, Texas Children's Hospital-USA, Houston, Texas, USA), Jorge Pinto (School of Medicine, Federal University of Minas Gerais, Belo Horizonte, Brazil), Pablo Rojo (Hospital Doce de Octubre, Madrid, Spain), Annette Sohn (Treat Asia/amfAR, Bangkok, Thailand), Russell Van Dyke (Tulane University, New Orleans, Louisiana, USA), Rachel Vreeman (Indiana University School of Medicine, Indianapolis, Indiana, USA).

¶Corresponding authors and contributed equally as project co-chairs. \* Statisticians.

**Data Coordinating Team:** Nicky Maxwell (University of Cape Town, Cape Town, South Africa), Venessa Timmerman (University of Cape Town, Cape Town, South Africa), Charlotte Duff (MRC Clinical Trials Unit at University College London, London, UK),

**Writing Committee:** Ali Judd (MRC Clinical Trials Unit at University College London, London, UK), George Seage III (Harvard T. H. Chan School of Public Health, Boston, Massachusetts, USA), Paige Williams (Harvard T. H. Chan School of Public Health, Boston, Massachusetts, USA), Diana Gibb (MRC Clinical Trials Unit at University College London, London, UK), Linda-Gail Bekker (Desmond Tutu HIV Centre, University of Cape Town, Cape Town, South Africa), Lynne Mofenson (Elizabeth Glaser Pediatric AIDS Foundation, Washington D.C., USA), Marissa Vicari (International AIDS Society, Geneva, Switzerland), Shaffiq Essajee (UNICEF, New York, New York, USA), Edith Q. Mohapi (Baylor International Pediatric AIDS Initiative, Maseru, Lesotho), Peter N. Kazembe (Baylor International Pediatric AIDS Initiative, Lilongwe, Malawi), Makhosazana Hlatshwayo (Baylor International Pediatric AIDS Initiative, Mbabane, Swaziland), Mwita Lumumba (Baylor International Pediatric AIDS Initiative, Mbeya, Tanzania), Adeodata Kekitiinwa-Rukyalekere (Baylor International Pediatric AIDS Initiative, Kampala, Uganda), Sebastian Wanless (Baylor International Pediatric AIDS Initiative, Texas Children's Hospital-USA, Houston, Texas, USA), Mogomotsi S. Matshaba (Baylor International Pediatric AIDS Initiative, Gaborone, Botswana), Tessa Goetghebuer (Hospital St Pierre Cohort, Bruxelles, Belgium), Luisa Galli (Università degli Studi di Firenze, Firenze, Italy), Sybil Geelen (Wilhelmina Children's Hospital, University Medical Centre Utrecht, University of Utrecht, Utrecht, the Netherlands), Claire Thorne (UCL Great Ormond Street Institute of Child Health, University College London, London, UK), Josiane Warszawski (Inserm (French Institute of Health and Medical Research), Paris, France), Carlo Giaquinto (PENTA Foundation, Padova, Italy), Magdalena Marczyńska (Medical University of Warsaw, Hospital of Infectious Diseases in Warsaw, Warsaw, Poland), Laura Marques (Portugal Centro Hospitalar do Porto, Porto,

CIPHER Incidence of switch to second-line ART Supplementary Tables and Figures (Lancet HIV)



Portugal), Filipa Prata (Hospital de Santa Maria, Lisbon, Portugal), Luminita Ene (Victor Babes Hospital, Bucharest, Romania), Liubov Okhonskaia (Republican Hospital of Infectious Diseases, St Petersburg, Russian Federation), Antoni Noguera-Julian (Hospital Sant Joan de Déu, Universitat de Barcelona, Barcelona, Spain), Lars Naver (Karolinska University Hospital, Stockholm, Sweden), Christoph Rudin (University Children's Hospital, Basel, Switzerland), Gonzague Jourdain (Faculty of Associated Medical Sciences, Chiang Mai University, Chiang Mai, Thailand/ Institut de Recherche pour le Développement, Marseille, France), Alla Volokha (Shupyk National Medical Academy of Postgraduate Education, Kiev, Ukraine), Vanessa Rouzier (GHESKIO Center, Port-au-Prince, Haiti), Regina Succi (Universidade Federal de São Paulo, São Paulo, Brazil), Kulkanya Chokephaibulkit (Siriraj Hospital, Mahidol University, Bangkok, Thailand), Azar Kariminia (Kirby Institute, University of New South Wales, Sydney, Australia), Marcel Yotebieng (College of Public Health, Ohio State University, Columbus, Ohio, USA), Patricia Lelo (Pediatric Hospital Kalembe Lembe, Lingwala, Kinshasa, Democratic Republic of Congo), Rita Lyamuya (Morogoro Regional Hospital, Morogoro, Tanzania), Irene Marete (Academic Model Providing Access to Healthcare (AMPATH), Eldoret, Kenya), Patrick Oyaró (Family AIDS Care and Education Services (FACES), Kenya Medical Research Institute (KEMRI), Kisumu, Kenya), Andrew Boule (Center for Infectious Disease Epidemiology and Research, University of Cape Town, South Africa/ Khayelitsha ART Programme, Cape Town, South Africa/ Western Cape Department of Health, Cape Town, South Africa), Kennedy Malisita (Queen Elisabeth Central Hospital, Blantyre, Malawi), Geoffrey Fatti (Kheth'Impilo, Cape Town, South Africa/ Faculty of Medicine and Health Sciences, Stellenbosch University, South Africa), Andreas D. Haas (Institute of Social and Preventive Medicine, University of Bern, Switzerland), Sophie Desmonde (Inserm (French Institute of Health and Medical Research), Paris, France), Fatoumata Dicko (CHU Gabriel Touré, Bamako, Mali), Mark J. Abzug (University of Colorado School of Medicine and Children's Hospital Colorado, Aurora, Colorado, USA), Myron Levin (University of Colorado School of Medicine and Children's Hospital Colorado, Aurora, Colorado, USA), James Oleske (Rutgers New Jersey Medical School, Newark, New Jersey, USA), Miriam Chernoff (Harvard T. H. Chan School of Public Health, Boston, Massachusetts, USA), Shirley Traite (Harvard T. H. Chan School of Public Health, Boston, Massachusetts, USA), Murli Purswani (Bronx-Lebanon Hospital Center, Bronx, New York, USA), Chloe Teasdale (ICAP-Columbia University Mailman School of Public Health, New York, New York, USA), Ellen Chadwick (Feinberg School of Medicine, Northwestern University, USA)

**Individual networks contributing to the CIPHER Cohort Collaboration have received the following financial support:**

CCASAnet receives funding from the United States (US) National Institutes of Health (NIH) (U01AI069923); leDEA Asia Pacific receives funding from the US NIH (U01AI069907); leDEA Central Africa receives funding from the US NIH (U01AI096299-07); leDEA East Africa receives funding from the US NIH (U01-AI069911); leDEA Southern Africa receives funding from the US NIH (U01-AI069924); leDEA West Africa receives funding from the US NIH (U01AI069919); IMPAACT 219C and P1074 (The International Maternal Pediatric Adolescent AIDS Clinical Trials Network (IMPAACT) was supported by NIAID under Award Numbers UM1AI068632 (IMPAACT LOC), UM1AI068616 (IMPAACT SDMC) and UM1AI106716 (IMPAACT LC), with co-funding from NICHD and NIMH.) PHACS receives funding from the US NIH (U01 HD052102 and US NIH U01 HD052104); The Optimal Models (ICAP at Columbia University) project was supported by the President's Emergency Plan for AIDS Relief (PEPFAR) through the Centers for Disease Control and Prevention under the terms of Cooperative Agreement Number 5U62PS223540 and 5U2GPS001537. EPPICC receives funding from EuroCoord (no260694),

PENTA Foundation and was partly funded by the Medical Research Council (<https://www.mrc.ac.uk>), programme number MC\_UU\_12023/26. Individual cohorts contributing to EPPICC receive the following support: The ATHENA database is maintained by Stichting HIV Monitoring and supported by a grant from the Dutch Ministry of Health, Welfare and Sport through the Centre for Infectious Disease Control of the National Institute for Public Health and the Environment. CoRISPE-cat receives financial support from the Instituto de Salud Carlos III through the Red Temática de Investigación Cooperativa en Sida. CoRISPE-s and Madrid Cohort is partially funded by the Fundación para la Investigación y Prevención de SIDA en España (FIPSE) (FIPSE 3608229/09, FIPSE 240800/09, FIPSE 361910/10), Red Temática de Investigación en SIDA (RED RIS) supported by Instituto de Salud Carlos III (ISCIII) (RD12/0017/0035 and RD12/0017/0037), project as part of the Plan R+D+I and co financed by ISCIII- Subdirección General de Evaluación and Fondo Europeo de Desarrollo Regional (FEDER), Mutua Madrileña 2012/0077, Gilead Fellowship 2013/0071, FIS PI15/00694, CoRISpe (RED RIS RD06/0006/0035 y RD06/0006/0021). The Swiss HIV Cohort Study is supported by the Swiss National Science Foundation (grant #148522), and by the SHCS research foundation. Ukraine Paediatric HIV Cohort is supported by the PENTA Foundation. CHIPS is funded by the NHS (London Specialised Commissioning Group and has received additional support from Bristol-Myers Squibb, Boehringer Ingelheim, GlaxoSmithKline, Roche, Abbott and Gilead Sciences. The MRC Clinical Trials Unit at UCL is supported by the Medical Research Council programme number MC\_UU\_12023/26.

## **ACKNOWLEDGEMENTS:**

**The following clinics, their personnel and patients are acknowledged for their contribution to the participating networks that made the CIPHER Cohort Collaboration Time on First Line Project possible.**

**BIPAI:** Baylor Botswana, Gabriel Anabwani; Baylor Lesotho, Edith Mohapi; Baylor Malawi, Peter N. Kazembe; Baylor Swaziland, Makhosazana Hlatshwayo; Baylor Tanzania, Mwita Lumumba; Baylor Uganda, Adeodata Kekitiinwa-Rukyalekere. Baylor International Pediatric AIDS Initiative at Texas Children's Hospital Founder, Mark Kline.

**EPPICC:** *Belgium* - Hospital St Pierre Cohort, Brussels: Tessa Goetghebuer, MD, PhD; Marc Hainaut, MD PhD; Evelyne Van der Kelen, research nurse; Marc Delforge, data manager. *France* - French Perinatal Cohort Study/Enquête Périnatale Française, ANRS EPF-CO10. Coordinating center, INSERM U1018, team 4: Dr Josiane Warszawski MD, PhD, Jerome Le Chenadec, Elisa Arezes, Olivia Dialla, Thierry Wack, Corine Laurent, Lamya Ait si Selmi, Isabelle Leymarie, Fazia Ait Benali, Maud Brossard, Leila Boufassa. Hôpital Louis Mourier, Colombes, Dr Corinne Floch-Tudal; Groupe Hospitalier Cochin Tarnier Port-Royal, Paris, Dr Ghislaine Firtion; Centre Hospitalier Intercommunal, Creteil, Dr Isabelle Hau; Centre Hospitalier Général, Villeneuve Saint Georges, Dr Anne Chace; Centre Hospitalier Général- Hôpital Delafontaine, Saint-Denis, Dr Pascal Bolot; Groupe Hospitalier Necker, Paris, Pr Stéphane Blanche; Centre hospitalier Francilien Sud, Corbeil Essonne, Dr Michèle Granier; Hôpital Antoine Béclère, Clamart, Pr Philippe Labrune; Hôpital Jean Verdier, Bondy, Dr Eric Lachassine; Hôpital Trousseau, Paris, Dr Catherine Dollfus ; Hôpital Robert Debré, Paris, Dr Martine Levine; Hôpital Bicêtre, Le Kremlin Bicêtre, Dr Corinne Fourcade; Centre Hospitalier Intercommunal, Montreuil, Dr Brigitte Heller- Roussin; Centre Hospitalier Pellegrin, Bordeaux,

Dr Camille Runel-Belliard; CHU Paule de Viguier, Toulouse, Dr Joëlle Tricoire; CHU Hôpital de l'Archet II, Nice, Dr Fabrice Monpoux; Groupe Hospitalier de la Timone, Marseille; CHU Hôpital Jean Minjoz, Besancon, Dr Catherine Chirouze; CHU Nantes Hotel Dieu, Nantes, Dr Véronique Reliquet; CHU Caen, Caen, Pr Jacques Brouard; Institut d'Hématologie et Oncologie Pédiatrique, Lyon, Dr Kamila Kebaili; CHU Angers, Angers, Dr Pascale Fialaire; CHR Arnaud de Villeneuve, Montpellier, Dr Muriel Lalande; CHR Jeanne de Flandres, Lille, Dr Françoise Mazingue; Hôpital Civil, Strasbourg, Dr Maria Luisa Partisani. *Germany* - German Paediatric & Adolescent HIV Cohort (GEPIC): Dr Christoph Königs, Dr Stephan Schultze-Strasser. German clinical centers: Hannover Medical School, Dr. U. Baumann; Pediatric Hospital Krefeld, Dr. T. Niehues; University Hospital Düsseldorf, Dr. J. Neubert; University Hospital Hamburg, Dr. R. Kobbe; Charite Berlin, Dr. C. Feiterna-Sperling; University Hospital Frankfurt, Dr. C. Königs; University Hospital Mannheim, Dr. B. Buchholz; Munich University Hospital, Dr. G. Notheis. *Greece* - Greek cohort: Vana Spoulou. *Italy* - Italian Register for HIV infection in Children. Coordinators: Maurizio de Martino (Florence), Pier Angelo Tovo (Turin). Participants: Osimani Patrizia (Ancona), Domenico Larovere (Bari), Maurizio Ruggeri (Bergamo), Giacomo Faldella, Francesco Baldi (Bologna) Raffaele Badolato (Brescia), Carlotta Montagnani, Elisabetta Venturini, Catuscia Lisi (Florence), Antonio Di Biagio, Lucia Taramasso (Genoa), Vania Giacommet, Paola Erba, Susanna Esposito, Rita Lipreri, Filippo Salvini, Claudia Tagliabue (Milan), Monica Cellini (Modena), Eugenia Bruzzese, Andrea Lo Vecchio (Naples), Osvalda Rampon, Daniele Donà (Padua), Amelia Romano (Palermo), Icilio Dodi (Parma), Anna Maccabruni (Pavia), Rita Consolini (Pisa), Stefania Bernardi, Hyppolite Tchidjou Kuekou, Orazio Genovese (Rome), Paolina Olmeo (Sassari), Letizia Cristiano (Taranto), Antonio Mazza (Trento), Clara Gabiano, Silvia Garazzino (Turin), Antonio Pellegatta (Varese). *Netherlands* The ATHENA database is maintained by Stichting HIV Monitoring and supported by a grant from the Dutch Ministry of Health, Welfare and Sport through the Centre for Infectious Disease Control of the National Institute for Public Health and the Environment. Clinical Centres (paediatric care): Emma Kinderziekenhuis, Academic Medical Centre of the University of Amsterdam: *HIV treating physicians*: D. Pajkrt, H.J. Scherpbier. *HIV nurse consultants*: C. de Boer, A.M. Weijzenfeld, A. van der Plas. *HIV clinical virologists/chemists*: S. Jurriaans, N.K.T. Back, H.L. Zaaijer, B. Berkhout, M.T.E. Cornelissen, C.J. Schinkel, K.C. Wolthers. Erasmus MC–Sophia, Rotterdam: *HIV treating physicians*: P.L.A. Fraaij, A.M.C. van Rossum, C.L. Vermont. *HIV nurse consultants*: L.C. van der Knaap, E.G. Visser. *HIV clinical virologists/chemists*: C.A.B. Boucher, M.P.G. Koopmans, J.J.A van Kampen, S.D. Pas. Radboudumc, Nijmegen: *HIV treating physicians*: S.S.V. Henriët, M. van de Flier, K. van Aerde. *HIV nurse consultants*: R. Strik-Albers. *HIV clinical virologists/chemists*: J. Rahamat-Langendoen, F.F. Stelma. Universitair Medisch Centrum Groningen, Groningen: *HIV treating physicians*: E.H. Schölvinck. *HIV nurse consultants*: H. de Groot-de Jonge. *HIV clinical virologists/chemists*: H.G.M. Niesters, C.C. van Leer-Buter, M. Knoester. Wilhelmina Kinderziekenhuis, UMC Utrecht, Utrecht: *HIV treating physicians*: L.J. Bont, S.P.M. Geelen, T.F.W. Wolfs. *HIV nurse consultants*: N. Nauta. *HIV clinical virologists/chemists*: R. Schuurman, F. Verduyn-Lunel, A.M.J. Wensing. Coordinating Centre: *Director*: P. Reiss. *Deputy director*: S. Zaheri. *Data analysis*: D.O. Bezemer, A.I. van Sighem, C. Smit, F.W.M.N. Wit, T.S. Boender. *Data management and quality control*: M. Hillebregt, A. de Jong, T. Woudstra. *Data monitoring*: D. Bergsma, S. Grivell, A. Jansen, R. Meijering, M. Raethke, T. Rutkens. *Data collection*: L. de Groot, M. van den Akker, Y. Bakker,

M. Bezemer, E. Claessen, A. El Berkaoui, J. Geerlinks, J. Koops, E. Kruijne, C. Lodewijk, R. van der Meer, L. Munjishvili, F. Paling, B. Peeck, C. Ree, R. Regtop, Y. Ruijs, M. Schoorl, A. Timmerman, E. Tuijn, L. Veenenberg, S. van der Vliet, A. Wisse, E.C. Witte. *Patient registration:* B. Tuk. *Poland* - Polish paediatric cohort: Head of the team: Prof Magdalena Marczyńska, MD, PhD. Members of the team: Jolanta Popielska, MD, PhD; Maria Pokorska-Śpiewak, MD, PhD; Agnieszka Ołdakowska, MD, PhD; Konrad Zawadka, MD, PhD; Urszula Coupland, MD, PhD. Administration assistant: Małgorzata Doroba. Affiliation: Medical University of Warsaw, Poland, Department of Children's Infectious Diseases; Hospital of Infectious Diseases in Warsaw, Poland. *Portugal* - Centro Hospitalar do Porto: Laura Marques, Carla Teixeira, Alexandre Fernandes. Portugal: Hospital de Santa Maria/CHLN: Filipa Prata. *Romania* - Victor Babes Hospita, Bucharest: Dr Luminita Ene. *Russia* - Federal State-owned Institution "Republican Clinical Infectious Diseases Hospital" of the Ministry of Health of the Russian Federation, St Petersburg: Liubov Okhonskaia, Evgeny Voronin, Milana Miloenko, Svetlana Labutina. *Spain* - CoRISPE-cat, Catalonia: Hospital Universitari Vall d'Hebron, Barcelona (Pere Soler-Palacín, Maria Antoinette Frick and Santiago Pérez-Hoyos (statistician)), Hospital Universitari del Mar, Barcelona (Antonio Mur, Núria López), Hospital Universitari Germans Trias i Pujol, Badalona (María Méndez), Hospital Universitari Josep Trueta, Girona (Lluís Mayol), Hospital Universitari Arnau de Vilanova, Lleida (Teresa Vallmanya), Hospital Universitari Joan XXIII, Tarragona (Olga Calavia), Consorci Sanitari del Maresme, Mataró (Lourdes García), Hospital General de Granollers (Maite Coll), Corporació Sanitària Parc Taulí, Sabadell (Valentí Pineda), Hospital Universitari Sant Joan, Reus (Neus Rius), Fundació Althaia, Manresa (Núria Rovira), Hospital Son Espases, Mallorca (Joaquín Dueñas) and Hospital Sant Joan de Déu, Esplugues (Clàudia Fortuny, Antoni Noguera-Julian). CoRISPE-S and Madrid cohort: María José Mellado, Luis Escosa, Milagros García Hortelano, Talía Sainz (Hospital La Paz); María Isabel González-Tomé, Pablo Rojo, Daniel Blázquez (Hospital Doce de Octubre, Madrid); José Tomás Ramos (Hospital Clínico San Carlos, Madrid); Luis Prieto, Sara Guillén (Hospital de Getafe); María Luisa Navarro, Jesús Saavedra, Mar Santos, M<sup>a</sup> Angeles Muñoz, Beatriz Ruiz, Carolina Fernandez Mc Phee, Santiago Jimenez de Ory, Susana Alvarez (Hospital Gregorio Marañón); Miguel Ángel Roa (Hospital de Móstoles); José Beceiro (Hospital Príncipe de Asturias, Alcalá de Henares); Jorge Martínez (Hospital Niño Jesús, Madrid); Katie Badillo (Hospital de Torrejón); Miren Apilanez (Hospital de Donostia, San Sebastián); Itziar Pocheville (Hospital de Cruces, Bilbao); Elisa Garrote (Hospital de Basurto, Bilbao); Elena Colino (Hospital Insular Materno Infantil, Las Palmas de Gran Canaria); Jorge Gómez Sirvent (Hospital Virgen de la Candelaria, Santa Cruz de Tenerife); Mónica Garzón, Vicente Román (Hospital de Lanzarote); Abián Montesdeoca, Mercedes Mateo (Complejo Universitario de Canarias, La Laguna-Tenerife), María José Muñoz, Raquel Angulo (Hospital de Poniente, El Ejido); Olaf Neth, Lola Falcón (Hospital Virgen del Rocío, Sevilla); Pedro Terol (Hospital Virgen de la Macarena, Sevilla); Juan Luis Santos (Hospital Virgen de las Nieves, Granada); David Moreno (Hospital Carlos Haya, Málaga); Francisco Lendínez (Hospital de Torrecárdenas, Almería); Ana Grande (Complejo Hospitalario Universitario Infanta Cristina, Badajoz); Francisco José Romero (Complejo Hospitalario de Cáceres); Carlos Pérez (Hospital de Cabueñes, Gijón); Miguel Lillo (Hospital de Albacete); Begoña Losada (Hospital Virgen de la Salud, Toledo); Mercedes Herranz (Hospital Virgen del Camino, Pamplona); Matilde Bustillo, Carmelo Guerrero (Hospital Miguel Servet, Zaragoza); Pilar Collado (Hospital Clínico Lozano Blesa, Zaragoza); José

Antonio Couceiro (Complejo Hospitalario de Pontevedra); Amparo Pérez, Ana Isabel Piqueras, Rafael Bretón, Inmaculada Segarra (Hospital La Fe, Valencia); César Gavilán (Hospital San Juan de Alicante); Enrique Jareño (Hospital Clínico de Valencia); Elena Montesinos (Hospital General de Valencia); Marta Dapena (Hospital de Castellón); Cristina Álvarez (Hospital Marqués de Valdecilla, Santander); Ana Gloria Andrés (Hospital de León); Víctor Marugán, Carlos Ochoa (Hospital de Zamora); Santiago Alfayate, Ana Isabel Menasalvas (Hospital Virgen de la Arrixaca, Murcia); Elisa de Miguel (Complejo Hospitalario San Millán-San Pedro, Logroño) and Paediatric HIV-BioBank integrated in the Spanish AIDS Research Network and collaborating Centers. *Sweden* - Karolinska University Hospital, Stockholm (Lars Naver, Sandra Soeria-Atmadja, Vendela Hagås, Erik Belfrage). *Switzerland* - Members of the Swiss HIV Cohort Study (SHCS) and the Swiss Mother and Child HIV Cohort Study: Aebi-Popp K, Asner S, Aubert V, Battegay M, Baumann M, Bernasconi E, Böni J, Brazzola P, Bucher HC, Calmy A, Cavassini M, Ciuffi A, Duppenhaler A, Dollenmaier G, Egger M, Elzi L, Fehr J, Fellay J, Francini K, Furrer H, Fux CA, Grawe C, Günthard HF (President of the SHCS), Haerry D (deputy of "Positive Council"), Hasse B, Hirsch HH, Hoffmann M, Hösli I, Kahlert C, Kaiser L, Keiser O, Klimkait T, Kovari H, Kouyos RD, Ledergerber B, Martinetti G, Martinez de Tejada B, Metzner KJ, Müller, Nicca D, Paioni P, Pantaleo G, Polli Ch, Posfay-Barbe K, Rauch A, Rudin C (Chairman of the Mother & Child Substudy), Schmid P, Scherrer AU (Head of Data Centre), Speck R, Tarr P, Thanh Lecompte M, Trkola A, Vernazza P, Wagner N, Wandeler G, Weber R, Wyler CA, Yerly S. *Thailand* - Program for HIV Prevention & Treatment (PHPT) Marc Lallemant, Gonzague Jourdain, Sophie Le Coeur S, Nicole Ngo-Giang-Huong. Participating hospitals: Lamphun: Pornpun Wannarit; Phayao Provincial Hospital: Pornchai Techakunakorn; Chiangrai Prachanukroh: Rawiwan Hansudewechakul; Chiang Kham: Vanichaya Wanchaitanawong; Phan: Sookchai Theansavetrakul; Mae Sai: Sirisak Nanta; Prapokklao: Chaiwat Ngampiyaskul; Banglamung: Siriluk Phanomcheong; Chonburi: Suchat Hongsiworn; Rayong: Warit Karnchanamayul; Bhuddasothorn Chacheongsao: Ratchanee Kwanchaipanich; Nakhonping: Suparat Kanjanavanit; Somdej Prapinklao: Nareerat Kamonpakorn, Maneeratn Nantarukchaikul; Bhumibol Adulyadej: Prapaisri Layangool, Jutarat Mekmullica; Pranangkla: Paiboon Lucksanapisitkul, Sudarat Watanayothin; Buddhachinaraj: Narong Lertpienthum; Hat Yai: Boonyarat Warachit; Regional Health Promotion Center 6, Khon Kaen: Sansanee Hanpinitsak; Nong Khai: Sathit Potchalongsin; Samutsakhon: Pimpraphai Thanasiri, Sawitree Krikajornkitti; Phaholpolphayahasena: Pornsawan Attavinijtrakarn; Kalasin: Sakulrat Srirojana; Nakhonpathom: Suthunya Bunjongpak; Samutprakarn: Achara Puangsombat; Mahasarakam: Sathaporn Na-Rajsima; Roi-et: Pornchai Ananpatharachai; Sanpatong: Noppadon Akarathum; Vachira Phuket: Weerasak Lawtongkum; Chiangdao: Prapawan Kheunjan, Thitiporn Suriyaboon, Airada Saipanya. Data management team: Kanchana Than-in-at, Nirattiya Jaisieng, Rapeepan Suaysod, Sanuphong Chailoet, Naritsara Naratee, and Suttipong Kawilapat. *Ukraine* - Paediatric HIV Cohort: Dr T. Kaleeva, Dr Y. Baryshnikova (Odessa Regional Centre for HIV/AIDS), Dr S. Soloha (Donetsk Regional Centre for HIV/AIDS), Dr N. Bashkatova (Mariupol AIDS Center), Dr I. Raus (Kiev City Centre for HIV/AIDS), Dr O. Glutshenko, Dr Z. Ruban (Mykolaiv Regional Centre for HIV/AIDS), Dr N. Prymak (Kryvyi Rih), Dr G. Kiseleva (Simferopol), Dr H. Bailey (UCL, London, UK). *UK & Ireland* - CHIPS is funded by the NHS (London Specialised Commissioning Group) and has received support from the PENTA Foundation and the Medical Research Council programme grant MC\_UU\_12023/26



awarded to the MRC Clinical Trials Unit. It has also received additional support from Abbott, Bristol-Myers Squibb, Boehringer Ingelheim, Gilead Sciences, GlaxoSmithKline, Janssen, Roche, and ViiV Healthcare. CHIPS Steering Committee: Hermione Lyall, Alasdair Bamford, Karina Butler, Katja Doerholt, Caroline Foster, Nigel Klein, Esse Menson, Katia Prime, Andrew Riordan, Fiona Shackley, Delane Shingadia, Sharon Storey, Gareth Tudor-Williams, Anna Turkova, Steve Welch. MRC Clinical Trials Unit: Intira Jeannie Collins, Claire Cook, Siobhan Crichton, Donna Dobson, Keith Fairbrother, Diana M. Gibb, Lynda Harper, Ali Judd, Marthe Le Prevost, Nadine Van Looy. National Study of HIV in Pregnancy and Childhood, UCL: Helen Peters, Claire Thorne. Participating clinics: Republic of Ireland: Our Lady's Children's Hospital Crumlin, Dublin: K Butler, A Walsh. UK: Birmingham Heartlands Hospital, Birmingham: , L Thrasyvoulou , S Welch; Blackpool Victoria Hospital, Blackpool: N Laycock; Bristol Royal Hospital for Children, Bristol: J Bernatoniene, F Manyika ; Calderdale Royal Hospital, Halifax: G Sharpe; Coventry & Warwickshire University Hospital, Coventry: P Lewis, S Welch; Derbyshire Children's Hospital, Derby: B Subramaniam; Derriford Hospital, Plymouth: L Hutchinson, P Ward; Middlesex: K Sloper; Eastbourne District General Hospital, Eastbourne: K Fidler; Glasgow Royal Hospital for Sick Children, Glasgow: , R Hague, V Price; Great Ormond St Hospital for Children, London: , M Clapson, J Flynn, A Cardoso M Abou-Rayyah , N Klein, D Shingadia; Halliwell Children's Centre, Bolton: P Ainsley-Walker; Harrogate District Hospital, Harrogate: P Tovey; Homerton University Hospital, London: D Gurtin; Huddersfield Royal Infirmary, Huddersfield: JP Garside; James Cook Hospital, Middlesbrough: A Fall; John Radcliffe Hospital, Oxford: S Yeadon , S Segal; King's College Hospital, London: C Ball, S Hawkins; Leeds General Infirmary, Leeds: , M Dowie; Leicester Royal Infirmary, Leicester: S Bandi, E Percival ; Luton and Dunstable Hospital, Luton: M Eisenhut; Handforth; Milton Keynes General Hospital, Milton Keynes: PK Roy; Newcastle General, Newcastle: T Flood, A Pickering; Liebeschuetz; Norfolk & Norwich Hospital, Norwich: C Kavanagh; North Manchester General, Manchester: P McMaster C Murphy; North Middlesex Hospital, London: J Daniels, Y Lees; Northampton General Hospital, Northampton: , F Thompson; Northwick Park Hospital Middlesex; , B Williams; Nottingham QMC , Nottingham: L Cliffe, A Smyth, S Southall; Queen Alexandra Hospital, Portsmouth: H Freeman; Raigmore Hospital, Inverness; Royal Alexandra Hospital, Brighton: K Fidler; Royal Belfast Hospital for Sick Children, Belfast: S Christie; Royal Berkshire Hospital, Reading: A Gordon; Royal Children's Hospital, Aberdeen: D Rogahn; Royal Cornwall Hospital, Truro: S Harris, L Hutchinson; Royal Devon and Exeter Hospital, Exeter: A Collinson, L Hutchinson; Royal Edinburgh Hospital for Sick Children, Edinburgh: L Jones, B Offerman; Royal Free Hospital, London: M Greenberg ; Royal Liverpool Children's Hospital, Liverpool: C Benson, A Riordan; Royal Preston Hospital, Preston: R O'Connor; Salisbury District General Hospital, Salisbury: N Brown; Sheffield Children's Hospital, Sheffield: L Ibberson, F Shackley; Southampton General Hospital, Southampton: SN Faust, J Hancock; St George's Hospital, London: K Doerholt, , K Prime, M Sharland, S Storey; St Luke's Hospital, Bradford: S Gorman; St Mary's Hospital, London: EGH Lyall, C Monrose, P Seery, G Tudor-Williams; St Thomas' Hospital (Evelina Children's Hospital), London: , E Menson; Torbay Hospital, Torquay: J Broomhall, L Hutchinson; University Hospital Lewisham, London: D Scott, J Stroobant; Royal Stoke University Hospital, Stoke On Trent: A Bridgwood, P McMaster; University Hospital of Wales, Cardiff: J Evans, E Blake ; Wexham Park, Slough: A Yannoulis; Whipps Cross Hospital, London: M O'Callaghan. EPPICC/PENTA Co-ordinating Team:

Elizabeth Chappell, Charlotte Duff, Laura Mangiarini, Rebecca Lundin, Alessandra Nardone, Daniel Gomezpena.

**CCASANet:** Fundación Huésped, Argentina, Pedro Cahn; Universidade Federal de Minas Gerais, Brazil, Jorge Pinto; Universidade Federal de São Paulo, Brazil, Regina Célia de Menezes Succi; Les Centres GHESKIO, Haiti, Jean William Pape; Hospital Escuela Universitario, Honduras, Marco Tulio Luque; Instituto Hondureño de Seguridad Social, Honduras, Denis Padgett.

**leDEA Asia-Pacific:** National Centre for HIV/AIDS, Dermatology and STDs, Phnom Penh, Cambodia, PS Ly\*, and V Khol; New Hope for Cambodian Children, Phnom Penh, Cambodia, J Tucker; YRG CARE Medical Centre, CART CRS, Chennai, India, N Kumarasamy\*, S Saghayam, and E Chandrasekaran; Sanglah Hospital, Udayana University, Bali, Indonesia, DK Wati\*, D VedaSwari, and IY Malino; Cipto Mangunkusumo – Faculty of Medicine Universitas Indonesia, Jakarta, Indonesia, N Kurniati\*, and D Muktiarti; Hospital Likas, Kota Kinabalu, Malaysia, SM Fong\*, M Lim, and F Daut; Hospital Raja Perempuan Zainab II, Kelantan, Malaysia, NK Nik Yusoff\*‡, and P Mohamad; Pediatric Institute, Hospital Kuala Lumpur, Kuala Lumpur, Malaysia, KA Razali\*, TJ Mohamed, and MR Drawis; Penang Hospital, Penang, Malaysia, R Nallusamy\*, and KC Chan; Department of Pediatrics, Faculty of Medicine, Chiang Mai University and Research Institute for Health Sciences, Chiang Mai, Thailand, T Sudjaritruk\*, V Sirisanthana, L Aurpibul, and P Oberdorfer; Chiangrai Prachanukroh Hospital, Chiang Rai, Thailand, R Hansudewechakul\*, S Denjanta, S Watanaporn, and A Kongphonoi; Division of Infectious Diseases, Department of Pediatrics, Faculty of Medicine, Khon Kaen University, Khon Kaen, Thailand, P Lumbiganon\*†, P Kosalaraksa, P Tharnprisan, and T Udomphanit; PHPT-IRD UMI 174 (Institut de recherche pour le développement and Chiang Mai University), Chiang Mai, Thailand, G Jourdain; HIV-NAT, The Thai Red Cross AIDS Research Centre, Bangkok, Thailand, T Bunupuradah\*, T Puthanakit, S Anugluengkit, and C Phadungphon; Department of Pediatrics, Faculty of Medicine Siriraj Hospital, Mahidol University, Bangkok, Thailand, K Chokephaibulkit\*, K Lapphra, W Phongsamart, and S Sricharoenchai; Children's Hospital 1, Ho Chi Minh City, Vietnam, KH Truong\*, QT Du, and CH Nguyen; Children's Hospital 2, Ho Chi Minh City, Vietnam, VC Do\*, TM Ha, and VT An; National Hospital of Pediatrics, Hanoi, Vietnam, LV Nguyen\*, DTK Khu, AN Pham, and LT Nguyen; Worldwide Orphans Foundation, Ho Chi Minh City, Vietnam, ON Le; TREAT Asia/amfAR -- The Foundation for AIDS Research, Bangkok, Thailand, AH Sohn\*, JL Ross, and C Sethaputra; The Kirby Institute, UNSW Australia, Sydney, Australia, DA Cooper, MG Law\*, and A Kariminia; (\*Steering Committee members; † Current Steering Committee Chair; ‡ co-Chair).

**leDEA Central Africa:** Burundi, Christelle Twizere – Association Nationale de Soutien aux Séropositifs; HIV-clinic (CPAMP-CHUK), Bujumbura University Hospital; Hôpital Prince Régent Charles; Democratic Republic of Congo, Marcel Yotebieng – Bomoï Health Center; Kalembe Lembe Pediatric Hospital; Rwanda, Jean D'amour Sinayobye - Bethsaid Hospital; Busanza Health Center; Gahanga Health Center; Gikondo Health Center; Kabuga Health Center; Kanombe Hospital/Rwanda Military Hospital; Kicukuri Health Center; Masaka Hospital; Nyarugunga Hospital; Women's Equity in Access to Care & Treatment.

**leDEA East Africa:** Academic Model Providing Access to Healthcare, Kenya, Samuel Ayaya; National Institute for Medical Research, Family AIDS Care and Education Services, Kenya, Elizabeth Bukusi; National AIDS Control Program, Tanzania, Geoffrey Somi; Morogoro Regional Hospital, Tanzania, Rita Lyumuya; Tumbi Regional Hospital, Tanzania, Ngonyani Kapella; National Institute for Medical Research, Kisesa Clinic, Tanzania, Mark Urassa; Masaka Regional Referral Hospital, Uganda, Mark Ssali; Rakai Health Science Program, Uganda, Fred Nalugoda. leDEA East Africa also acknowledges senior data manager Beverly Musick, Indiana University, USA.

**leDEA Southern Africa:** Aid for AIDS, South Africa, Gary Maartens; Aurum Institute for Health Research, South Africa, Christopher J. Hoffmann; Centre for Infectious Disease Research in Zambia, Zambia, Michael Vinikoor; Centro de Investigação em Saúde de Manhiça, Mozambique, Eusebio Maceta; Dignitas, Malawi, Monique van Lettow; Gugulethu Cohort (Desmond Tutu HIV Centre), South Africa, Robin Wood; Harriet Shezi Clinic, Chris Hani Baragwanath Hospital (Wits Paediatric HIV Clinics), South Africa, Shobna Sawry; Hlabisa (Africa Centre for Health & Population Studies), South Africa, Frank Tanser; Khayelitsha ART Programme, South Africa, Andrew Boule; Kheth 'Impilo, South Africa, Geoffrey Fatti; Lighthouse Truse clinic, Malawi, Sam Phiri; McCord Hospital, South Africa, Janet Giddy; Newlands Clinic, Zimbabwe, Cleophas Chimbetete; Queen Elizabeth Hospital, Malawi, Kennedy Malisita; Rahima Moosa Mother & Child Hospital (Wits Paediatric HIV Clinics), South Africa, Karl Technau; Red Cross War Memorial Children's Hospital and School of Child & Adolescent Health, University of Cape Town, South Africa, Brian Eley; SolidarMed SMART Programme Lesotho, Lesotho, Christiane Fritz; SolidarMed SMART Programme Mozambique, Mozambique, Michael Hobbins; SolidarMed SMART Programme Zimbabwe, Zimbabwe, Kamelia Kamenova; Themba Lethu Clinic, Helen Joseph Hospital, South Africa, Matthew P. Fox; Tygerberg Academic Hospital, South Africa, Hans Prozesky.

**leDEA West Africa:** *Executive Committee:* François Dabis (Principal Investigator, Bordeaux, France), Emmanuel Bissagnene (Co-Principal Investigator, Abidjan, Côte d'Ivoire), Elise Arrivé (Bordeaux, France), Patrick Coffie (Abidjan, Côte d'Ivoire), Didier Ekouevi (Abidjan, Côte d'Ivoire), Antoine Jaquet (Bordeaux, France), Valériane Leroy (Chair of the pediatric group, Toulouse, France). Benin, Cotonou: Sikirato Koumakpaï, (CNHU Hubert Maga). Côte d'Ivoire, Abidjan: Marie-Sylvie N'Gbeche, Kouadio Kouakou (CIRBA); Madeleine Amorissani Folquet (CHU Cocody); Tanoh François Eboua (CHU Yopougon). Ghana, Accra: Lorna Renner (Korle Bu TH). Mali, Bamako: Fatoumata Dicko, Mariam Sylla (CH Gabriel Toure). Togo, Lomé: Elom Takassi (CHU Tokoin/Sylvanus Olympio). Senegal, Dakar: Haby Signate-Sy, Hélène Dior (CH Albert Royer). Burkina Faso, Ouagadougou: Diarra Yé, Fla Kouéta (CH Charles de Gaulle).

**IMPAACT:** The following sites participated in PACTG 219/219C: University of New Jersey Medical and Dental School, Boston Medical Center, Children's Hospital LA, Long Beach Memorial Medical Center, Miller Children's Hospital, Harbor/UCLA Medical Center, Johns Hopkins Hospital & Health System, University of Maryland Medical Center, Texas Children's Hospital, Cook County Hospital, Children's Hospital of Columbus Ohio, University of Miami

Miller School of Medicine, University of California San Francisco School of Medicine, Children's Hospital & Research Center Oakland, University of California San Diego, Duke University School of Medicine, University of North Carolina at Chapel Hill School of Medicine, Schneider Children's Hospital, Harlem Hospital Center, New York University School of Medicine, Children's National Medical Center, University of Washington School of Medicine, University of Illinois College of Medicine at Chicago, Yale University School of Medicine, SUNY at Stony Brook School of Medicine, Howard University Hospital, LA County/University of Southern California Medical Center, University of Florida Health Science Center Jacksonville, North Broward Hospital District, Children's Diagnostic & Treatment Center, University of Rochester Medical Center, Golisano Children's Hospital, Medical College of Virginia, St. Jude Children's Research Hospital, University of Puerto Rico, U. Children's Hospital AIDS, Children's Hospital of Philadelphia, St. Christopher's Hospital for Children/Drexel University College of Medicine, Bronx-Lebanon Hospital Center, New York Medical College/Metropolitan Hospital Center, University of Massachusetts Memorial Children's Medical School, Baystate Medical Center, Connecticut Children's Medical Center, Medical College of Georgia School of Medicine, University of South Alabama College of Medicine, LSU Health Sciences Center, Tulane University Health Sciences Center, St. Josephs Hospital and Medical Center, Cooper University Hospital, Children's Hospital Boston, David Geffen School of Medicine at UCLA, Children's Hospital of Orange County, Children's Memorial Hospital University of Chicago, Mt. Sinai Hospital Medical Center Chicago, Columbia University Medical Center, Incarnation Children's Center, Cornell University, Bellevue Hospital, San Francisco General, Phoenix Children's Hospital, Metropolitan Hospital Center New York, University of Cincinnati, SUNY Downstate Medical Center, Children's Hospital at Downstate, North Shore University Hospital, University of South Florida, Cornell University, Oregon Health & Science University, Children's Hospital of the King's Daughters, Lincoln Medical & Mental Health Center, Mt. Sinai School of Medicine, Emory University Hospital, San Juan City Hospital, UMDNJ - Robert Wood Johnson, Ramon Ruiz Arnau University Hospital, Medical University of South Carolina, SUNY Upstate Medical University, Wayne State University School of Medicine, Children's Hospital of Michigan, Children's Hospital at Albany Medical Center, Children's Medical Center of Dallas, University of Colorado at Denver and Health Sciences, Columbus Children's Hospital, University of Florida College of Medicine, University of Mississippi Medical Center, Palm Beach County Health Department, Children's Hospital LA, Vanderbilt University Medical Center, Washington University School of Medicine at St. Louis, St. Louis Children's Hospital, Children's Hospital & Medical Center Seattle, St. Luke's-Roosevelt Hospital Center, Montefiore Medical Center/Albert Einstein College of Medicine, Children's Hospital Washington DC, Children's Hospital of the King's Daughters, University of Alabama at Birmingham, Columbus Regional HealthCare System, The Medical Center, Sacred Heart Children's Hospital/CMS of Florida, Bronx Municipal Hospital Center/Jacobi Medical Center.

The following sites participated in P1074: New Jersey Medical School, UCLA–Los Angeles/Brazil AIDS Consortium, Texas Children's Hospital, Lurie Children's Hospital of Chicago, Columbia University Medical Center, University of Miami Pediatric Perinatal HIV/AIDS, University of California San Diego, Mother-Child-Adolescent Program, Duke University Medical Center, Children's Hospital of Boston, Boston Medical Center Pediatric HIV Program, New York University, Jacobi Medical Center Bronx, Children's National Medical Center Washington, DC,

Seattle Children's Hospital, University of South Florida Tampa, San Juan City Hospital, SUNY Stony Brook, Children's Hospital of Michigan, Howard University Washington DC, Harbor UCLA Medical Center, University of Southern California School of Medicine, University of Florida Health Science Center, University of Colorado Denver, South Florida Children's Diagnostic and Treatment Center Fort Lauderdale, Strong Memorial Hospital University of Rochester Medical Center, Rush University Cook County Hospital Chicago, Children's Hospital of Los Angeles, University of California San Francisco, Johns Hopkins University Baltimore, Miller Children's Hospital, University of Maryland Baltimore, Tulane University New Orleans, University of Alabama Birmingham, The Children's Hospital of Philadelphia, Bronx-Lebanon Hospital, St Jude's Children's Hospital, University of Puerto Rico Pediatric HIV/AIDS Research Program, Western New England Maternal Pediatric Adolescent AIDS.

**Médecins Sans Frontières:** The following sites contributed to the MSF Pediatric Cohorts : *Cameroon* – Douala Nylon, Douala Soboum; *Central African Republic* – Boguila, Carnot, Zemio; *Democratic Republic of Congo* – Bukavu Baraka, Katanga Dubie, Katanga Kilwa, Kimbi Lulenge, Kinshasa, Mweso, Shamwana; *Ethiopia* – Abdurafi; *India* – Manipur, Moreh, Mumbai; *Malawi* – Chiradzulu; *Mozambique* – Alto Mae, Chamanculo; *Myanmar* – Dawei, Insein, Kachin Bhamo, Kachin Moegaung, Kachin Myitkyina 1, Kachin Myitkyina 1, Kachin Phakant, Kachin Waimaw, Rakhine Maugdaw, Rachine Sittwe, Shan Laiza, Shan Lashio, Shan Muse, Yangon B, Yangon C, Yangon I, Yangon T, Yangon TIB, Yangon TIC; *South Sudan* – Leer, Nasir; *Guinea* – Conakry; *Uganda* – Arua.

**PHACS:** The following sites participated in PHACS AMP: Ann & Robert H. Lurie Children's Hospital of Chicago: Ram Yogev; Baylor College of Medicine: William Shearer; Bronx Lebanon Hospital Center: Murli Purswani; Children's Diagnostic & Treatment Center: Ana Puga; Children's Hospital, Boston: Sandra K. Burchett; Jacobi Medical Center: Andrew Wiznia; Rutgers - New Jersey Medical School: Arry Dieudonne; St. Christopher's Hospital for Children: Janet S. Chen; St. Jude Children's Research Hospital: Katherine Knapp; San Juan Hospital/Department of Pediatrics: Midnela Acevedo-Flores; Tulane University School of Medicine: Margarita Silio; University of California, San Diego: Stephen A. Spector; University of Colorado Denver Health Sciences Center: Elizabeth McFarland; University of Miami: Gwendolyn Scott. Project coordination was provided by Harvard T.H. Chan School of Public Health: Julie Alperen and by Tulane University School of Medicine: Patrick Davis. Data management was provided by Frontier Science and Technology Research Foundation: Sue Siminski; Operational and regulatory support was provided by Westat Inc: Julie Davidson.

**Optimal Models-ICAP:** The following people and sites contributed to Optimal Models: *Ethiopia* -Mohamed Ahmed, Harari Regional Health Bureau; Zelalem Habtamu, Oromia Regional Health Bureau; Kassahun Hailegiorgis, Dire Dawa Regional Health Bureau; Zenebe Melaku, ICAP Ethiopia. Abomsa Hospital, Abosto HC, Adama Hospital, Addis Ketema Health Center, Adola, Ambo Hospital, Arategna Health Center, Assela Hospital, Bishoftu Hospital, Bisidimo Hospital, Bulle Hura Hospital, Chiro Hospital, Deder Hospital, Dire Dawa Health Center, Dodola, Fitcha Hospital, Gedo Hospital, Gelemso Hospital, Gende Gerada Health Center, Gende Kore Health Center, Gindeberet Hospital, Ginir Hospital, Goro Health Center, Harar TB Hospital, Hiwot Fana



Hospital, Jenila Health Center, Jijiga Health Center, Jimma Hospital, Karamara Hospital, Kuyu Hospital, Leghare Health Center, Limmu-Genet Hospital, Mariam Work Hospital, Melka-Jebdu Health Center, Metehara Hospital, Metu Karl Hospital, Misrak Arbegnoch Hospital, Negele Hospital, Robe Dida, Sabian Health Center, Shashemene Hospital, Sher Ethiopia Private Hospital, St. Luke (Woliso) Hospital, Tulu Bolo Hospital, Wonji Hospital, Yabelo, Yimaji Private Hospital. *Kenya* - Mark Hawken, ICAP Kenya; Maureen Kamene Kimenye, PASCO Central province; Irene N. Mukui, National AIDS and STIs Control Programme. Abidha Health Center, Ahero Sub District Hospital, Akala Health Center, Aluor Mission, Athi River Health Center, Awasi Mission, Bar Agulu Dispensary, Bar Olengo, Bondo District Hospital, Boro Dispensary, Daniel Comboni Dispensary-Ndithini, Dienya Health Center, Gobei Dispensary, Hawinga Dispensary, Kali Dispensary, Kathiani Sub District Hospital, Kibwezi Health Center, Kikoko Mission Hospital, Kitui District hospital, Madiant District Hospital, Mahaya Health Center, Malanga Health Center, Manyuanda Dispensary, Masogo Subdistrict Hospital, Matangwe mission Hospital, Mtito Andei Health Center, Muhoroni SDH, Mulaha Dispensary, Naya Dispensary, Ndere Health Center, Ndori Dispensary, Ngiya Mission, Nyakach AIC Dispensary, Nyangoma Kogelo, Ongiello Health Center, Rangala Mission, Rera Health Center, Siaya District Hospital, Sigomere Health Center, Sikalame Health Center, Tawa Health Center, Tingwani Health Center, Ukwala Health Center, Usigu Health Center, Uyawi Health Center, Wagai Dispensary, Yala Sub District Hospital. *Mozambique* - Josue Lima, ICAP Mozambique; Antonio Mussa, ICAP Mozambique; Américo Rafi Assan, Ministry of Health Mozambique. 17 de Setembro Health Center, 25 de Setembro Health Center – Nampula, Akumi Health Center – Nacala, Anchilo Health Center, Angoche HR, Coalane Health Center, Gurue Rural Hospital Ilha de Mocambique, Liupo Health Center, Lumbo Health Center, Malema Health Center, Marrere General Hospital, Meconta Health Center, Memba Health Center, Milange Health Center, Military Hospital-Maputo, Mocuba Rural Hospital, Moma Health Center, Monapo HR, Monapo Health Center, Mossuril HR, Nacala-Porto District Hospital, Nacala-Porto Health Center, Nacuxa HR, Nametil Health Center, Namialo Health Center, Namitoria Health Center, Nampula Central Hospital, Namuinho Health Center, Nicoadala Health Center, Pediatric Central Hospital – Nampula, Ribaue Rural Hospital; *Rwanda* - Vincent Mutabazi, Treatment and Research AIDS Center; Ruben Sahabo, ICAP Rwanda. Avega Clinic, Bethsaida Health Center, Bigogwe Health Center, Busasamana Health Center, Butare Hospital, Carrefour Polyclinic, Central Hospital-Kigali, Congo Nil Health Center, Gisenyi District Hospital, Gisenyi Prison, Gisovu Health Center, Kabaya District Hospital, Kabusunzu Health Center, Kayove Health Center, Kibuye District Hospital, Kicukiro Health Center, Kigali Central Prison, Kigufi Health Center, Kinunu Health Center, Kirambo Health Center, Kirinda District Hospital, Kivumu Health Center, Mugonero District Hospital, Muhima District Hospital, Muhororo District Hospital, Mukungu Health Center, Munzanga Health Center, Murunda District Hospital, Mushubati Health Center, Mwendo Health Center, Ndera Neuropsychiatric Hospital, Nyabirasi Health Center, Nyakiriba Health Center, Nyange A health Center, Nyange B Health Center, Ramba Health Center, Rambura Health Center, Rubengera Health Center, Rugarama Health Center, Rususa health Center, Shyira District Hospital; *Tanzania* - Gretchen Antelman, ICAP Tanzania; Redempta Mbatia, ICAP Tanzania; Geoffrey Somi, National AIDS Control Program. Al-Rahma Hospital, Bagamoyo District Hospital, Baleni Dispensary, Biharamulo Designated District Hospital, Bunazi Health Center, Bwanga Health Center, Chake Chake Hospital, Chalinze Health Center, Chato District

Hospital, ChemChem (Miburani) Dispensary, Heri Mission Hospital, Ikwiriri Health Center, Isingiro Hospital, Izimbya Hospital, Kabanga Mission Hospital, Kagera Sugar Hospital, Kagondo Hospital, Kahororo Dispensary, Kaigara Health Center, Kakonko Health Center, Kanazi Health Centre, Kasulu District Hospital, Katoro Health Centre, Kayanga Health Centre, Kibiti Health Center, Kibondo District Hospital, Kigarama Health Centre, Kigoma Dispensary, Kigoma Regional Hospital, Kilimahewa Mission Dispensary, Kirongwe Dispensary, Kisarawe District Hospital, Kishanje Health Centre, Kisiju Health Centre, Kivunge Hospital, Kongowe Dispensary, Lugoba Health Center, Mabamba Health Center, Mafia District Hospital, Maneromango Health Center, Masaki Health Centre, Mchukwi Hospital, Michiweni Hospital, Miono Health Centre, Mkamba Health Centre, Mkoani Health Centre, Mkomaindo Hospital, Mkuranga District Hospital, Mlandizi Health Center, Mnazi Mmoja Hospital, Mugana Designated District Hospital, Murgwanza Designated District Hospital, Murongo Health Center, Mwembeladu Maternity Hospital, Mzenga Health Centre, Ndanda Hospital, Ndolage Hospital, Newala Hospital, Nguruka Health Centre, Nkwenda Health Center, Nyakahanga Designated District Hospital, Nyamiaga Health Centre, Ocean Road Cancer Institute, Rubya Designated District Hospital, Rulenge Hospital, Rwamishenye Health Centre, St. Therese Bukoba Health Center, Tumbi Regional Hospital, Ujiji Health Center, Utende Dispensary, Utete District Hospital, Uvinza Dispensary, Wete Hospital, Zam Zam Health Centre. *ICAP Central* - Matthew Lamb, Denis Nash, Harriet Nuwagaba-Biribonwoha.

**Table S1. Cumulative incidence (%) of switch to second-line ART by 1, 2, and 3 years after start of ART: by initial regimen and region**

% switched to second-line	USA	Latin America	Europe	Asia	Southern Africa	Rest of sub-Saharan Africa	Total
<b>Overall:</b>							
1 year	9.9 (6.2, 14.7)	1.1 (0.6, 1.9)	4.8 (3.9, 5.8)	0.6 (0.5, 0.9)	0.9 (0.7, 1.0)	0.3 (0.3, 0.3)	0.6 (0.5, 0.6)
2 years	19.0 (13.8, 24.9)	3.1 (2.1, 4.4)	9.5 (8.2, 10.8)	3.2 (2.8, 3.7)	3.1 (2.8, 3.7)	0.8 (0.7, 0.8)	1.7 (1.6, 1.8)
3 years	26.1 (20.0, 32.7)	6.5 (4.9, 8.3)	12.2 (10.8, 13.7)	6.6 (5.9, 7.3)	5.4 (5.1, 5.9)	1.5 (1.4, 1.6)	3.1 (3.0, 3.2)
<b>NNRTI-based ART:</b>							
1 year	15.9 (9.9, 23.2)	1.2 (0.6, 2.2)	6.7 (5.3, 8.2)	0.6 (0.4, 0.8)	1.0 (0.8, 1.2)	0.3 (0.2, 0.3)	0.5 (0.5, 0.6)
2 years	28.5 (20.5, 37.0)	3.3 (2.2, 4.7)	12.5 (10.7, 14.5)	3.3 (2.8, 3.8)	4.0 (3.6, 4.4)	0.7 (0.6, 0.8)	1.6 (1.5, 1.7)
3 years	37.0 (28.1, 45.9)	6.6 (5.0, 8.5)	16.1 (14.0, 18.4)	6.6 (5.9, 7.4)	7.0 (6.4, 7.6)	1.4 (1.3, 1.5)	3.0 (2.9, 3.2)
<b>PI-based ART:</b>							
1 year	1.3 (0.1, 6.2)	-	2.4 (1.6, 3.6)	1.7 (0.6, 4.0)	0.7 (0.5, 0.9)	2.0 (1.3, 2.9)	1.0 (0.9, 1.3)
2 years	0.5 (0.2, 11.8)	1.1 (0.9, 5.4)	5.4 (4.1, 7.1)	2.2 (0.8, 4.8)	1.8 (1.5, 2.1)	3.8 (2.8, 5.1)	2.5 (2.1, 2.8)
3 years	10.1 (4.4, 18.5)	5.1 (1.6, 11.6)	7.0 (5.4, 8.8)	3.6 (1.6, 7.1)	3.2 (2.7, 3.7)	4.3 (3.2, 5.7)	3.9 (3.4, 4.3)
<b>NNRTI-based ART, routine CD4/VL monitoring:</b>	-	-	-	-	-		
1 year						1.2 (0.8, 1.9)	
2 years						3.4 (2.6, 4.4)	
3 years						5.9 (4.7, 7.2)	
<b>NNRTI-based ART, routine CD4, targeted VL monitoring:</b>	-	-	-	-	-		
1 year						0.3 (0.3, 0.5)	
2 years						1.0 (0.8, 1.1)	
3 years						2.1 (1.8, 2.4)	
<b>NNRTI-based ART, routine CD4 monitoring only:</b>	-	-	-	-	-		
1 year						0.2 (0.2, 0.5)	
2 years						0.5 (0.4, 0.6)	
3 years						1.1 (0.9, 1.2)	
<b>NNRTI-based ART, clinical monitoring only:</b>	-	-	-	-	-		

1 year						0.2 (0.1, 0.3)	
2 years						0.3 (0.2, 0.5)	
3 years						0.7 (0.6, 1.0)	
<b>PI-based ART, routine CD4/VL monitoring:</b>							
1 year	-	-	-	-	-	2.5 (0.7, 6.7)	
2 years						9.7 (4.4, 17.5)	
3 years						9.7 (4.4, 17.5)	
<b>PI-based ART, other monitoring strategy:</b>							
1 year	-	-	-	-	-	1.9 (1.3, 2.8)	
2 years						3.4 (2.4, 4.6)	
3 years						3.8 (2.7, 5.2)	

ART=antiretroviral therapy; PI=protease inhibitor; NNRTI=non-nucleoside reverse transcriptase inhibitor; VL=viral load.

**Table S2. Cumulative incidence (%) of switch to second-line ART by 1, 2, and 3 years after start of ART among patients who initiated ART in 2011-2014: by monitoring strategy**

	Percent (95% CI) switched to second-line		
Year after ART start	1 year	2 years	3 years
<b>Monitoring strategy, among those starting ART ≥2011</b>			
Routine VL, routine CD4	0.9 (0.7, 1.3)	2.8 (2.2, 3.5)	4.1 (3.3, 5.2)
Targeted VL, routine CD4	0.4 (0.2, 0.6)	0.9 (0.6, 1.3)	1.6 (1.1, 2.2)
Routine CD4 only	0.3 (0.2, 0.4)	0.6 (0.4, 0.8)	1.2 (0.8, 1.6)
Clinical monitoring	0.3 (0.1, 0.5)	0.3 (0.2, 0.6)	0.8 (0.4, 1.5)
<b>Total</b>	0.4 (0.3, 0.5)	1.0 (0.9, 1.2)	1.8 (1.5, 2.2)

**Table S3: Sensitivity analyses with alternative definition of switch (without requirement for change in  $\geq$ NRTI)**

	Global p-value sHR (95% CI)			
	Complete case (n=93,351)		Sub-group of cohorts with routine CD4 monitoring and children with immune/WAZ ascertainment (n=32,989)	
	Univariate	Multivariate	Univariate	Multivariate
<b>Characteristics at start of ART</b>				
<b>Sex</b>	P<0.0001	P<0.0001	P<0.0001	P<0.0001
Female vs male	0.80 (0.75, 0.85)	0.79 (0.74, 0.84)	0.81 (0.76, 0.87)	0.82 (0.76, 0.89)
<b>Age (years)</b>	p<0.0001	p<0.0001	p<0.0001	p<0.0001
<3	0.62 (0.57, 0.67)	0.64 (0.59, 0.69)	0.59 (0.55, 0.64)	0.63 (0.57, 0.71)
3-5	0.77 (0.71, 0.84)	0.72 (0.67, 0.78)	0.78 (0.71, 0.84)	0.71 (0.64, 0.79)
6-9	1.00	1.00	1.00	1.00
$\geq 10$	1.29 (1.11, 1.50)	1.14 (0.97, 1.33)	1.16 (1.00, 1.36)	1.25 (1.04, 1.50)
<b>Known AIDS diagnosis</b>	p=0.028	p=0.029	p=0.60	p=0.64
Yes vs no	0.93 (0.88, 0.99)	0.93 (0.87, 0.99)	1.02 (0.95, 1.09)	0.98 (0.90, 1.07)
<b>WHO immunodeficiency for age</b>			p<0.0001	p<0.0001
None			1.08 (0.91, 1.28)	0.92 (0.77, 1.11)
Mild			1.24 (1.03, 1.49)	1.19 (0.97, 1.45)
Advanced			1.00	1.00
Severe			1.38 (1.22, 1.57)	1.41 (1.22, 1.63)
<b>Weight for age z-score</b>			p=0.16	p=0.26
<-2			0.93 (0.86, 1.01)	1.06 (0.97, 1.16)
-2 to <0			1.00	1.00
$\geq 0$			1.02 (0.89, 1.18)	0.94 (0.81, 1.10)
<b>Regimen</b>	p=0.0017	p<0.0001	p<0.0001	p<0.0001
PI vs NNRTI	1.15 (1.05, 1.26)	0.70 (0.63, 0.78)	0.69 (0.62, 0.76)	0.58 (0.50, 0.68)
<b>Calendar year</b>	p<0.0001	p<0.0001	p<0.0001	p<0.0001
$\leq 2004$	2.98 (2.72, 3.25)	1.33 (1.21, 1.47)	2.30 (2.10, 2.52)	1.35 (1.18, 1.53)
2005-2007	1.45 (1.35, 1.56)	1.25 (1.16, 1.35)	1.27 (1.17, 1.37)	1.18 (1.07, 1.30)
2008-2010	1.00	1.00	1.00	1.00
$\geq 2011$	0.54 (0.47, 0.62)	0.61 (0.53, 0.70)	0.48 (0.41, 0.57)	0.59 (0.48, 0.72)

CI, 95% confidence interval; sHR, sub-hazard ratio; ART, antiretroviral therapy; WAZ, weight-for-age z-score. Data are from the HIV Cohort Study (HIVCS) and the HIV Cohort Study (HIVCS) (Lancet HIV)

<b>Cohort level factors</b>				
<b>Monitoring strategy</b>	p<0.0001	p<0.0001	p<0.0001	p<0.0001
Routine CD4 & VL	4.79 (4.38, 5.23)	2.69 (2.25, 3.21)	2.95 (2.67, 3.25)	2.33 (1.91, 2.84)
Routine CD4 & targeted VL	2.16 (1.94, 2.40)	1.94 (1.74, 2.17)	1.27 (1.13, 1.43)	1.42 (1.23, 1.64)
Routine CD4 only	1.00	1.00	1.00	1.00
Clinical only	0.74 (0.61, 0.89)	0.67 (0.55, 0.82)	-	-
<b>Country income group</b>	p<0.0001	p<0.0001	p<0.0001	P=0.70
Low	1.00	1.00	1.00	1.00
Lower middle	1.02 (0.93, 1.12)	1.08 (0.97, 1.20)	0.99 (0.89, 1.11)	1.00 (0.87, 1.14)
High/upper middle	3.38 (3.13, 3.64)	1.57 (1.35, 1.84)	2.39 (2.20, 2.59)	1.09 (0.89, 1.33)
<b>Region</b>	p<0.0001	p<0.0001	p<0.0001	p<0.0001
USA	4.15 (3.19, 5.39)	4.05 (3.09, 5.32)	3.05 (1.87, 4.97)	4.40 (2.30, 8.40)
Europe	2.46 (2.22, 2.74)	2.41 (2.15, 2.70)	2.18 (1.96, 2.44)	2.46 (2.09, 2.91)
Latin America	1.36 (1.14, 1.63)	2.14 (1.74, 2.62)	1.43 (1.19, 1.73)	2.35 (1.85, 2.99)
Asia	1.47 (1.34, 1.61)	1.70 (1.53, 1.90)	1.38 (1.25, 1.52)	1.11 (0.96, 1.28)
Southern Africa	1.00	1.00	1.00	1.00
Rest of SSA	0.35 (0.32, 0.38)	1.05 (0.88, 1.26)	0.47 (0.43, 0.51)	0.81 (0.65, 1.02)

ART=antiretroviral therapy; sHR=Sub-distribution hazard ratio; CI=confidence interval; PI=protease inhibitor; NNRTI=non-nucleoside reverse transcriptase inhibitor; NRTI= nucleoside reverse transcriptase inhibitor; WAZ=weight-for-age z-score; VL=viral load; SSA=sub-Saharan Africa.

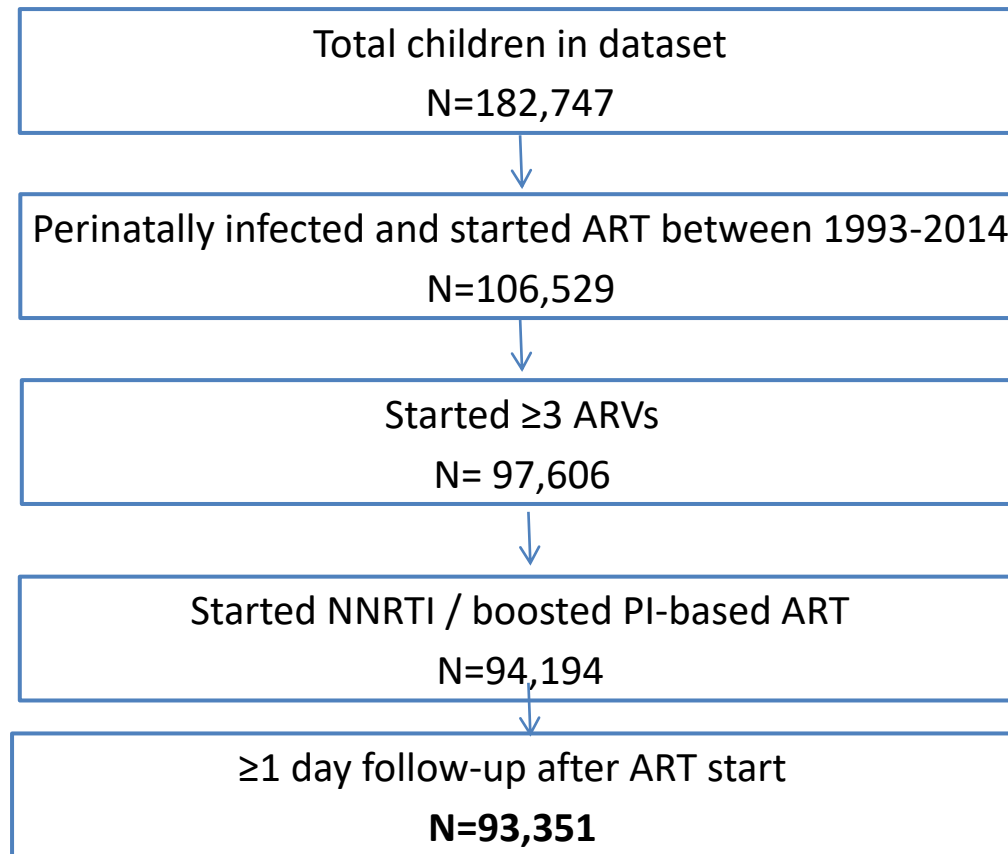
**Table S4. Characteristics at time of switch among children switched to second-line ART**

	USA	Latin America	Europe	Asia	Southern Africa	Rest of sub-Saharan Africa	Total
N	<b>72</b>	<b>123</b>	<b>464</b>	<b>587</b>	<b>1255</b>	<b>1382</b>	<b>3883</b>
Median time from ART start to switch, months [IQR]	24 [12, 42]	42 [26, 72]	35 [14, 66]	35 [22, 52]	33 [19, 55]	38 [23, 57]	35 [20, 57]
Male sex	33 (45.8)	61 (49.6)	223 (48.1)	359 (61.2)	702 (55.9)	816 (59.1)	2194 (56.5)
Median age, years [IQR]	4.1 [1.9, 7.5]	10.3 [6.7, 13.8]	8.2 [4.2, 12.0]	7.7 [5.5, 10.0]	8.3 [5.3, 11.2]	9.4 [6.3, 12.0]	8.6 [5.5, 11.5]
<b>Drug class of switch</b>							
NNRTI to PI	56 (77.8)	117 (95.1)	330 (71.1)	573 (97.6)	940 (74.9)	1313 (95.0)	3329 (85.7)
PI to NNRTI	8 (11.1)	4 (3.3)	78 (16.8)	5 (0.1)	277 (22.1)	47 (3.4)	419 (10.8)
Other	8 (11.1)	2 (1.6)	56 (12.1)	9 (1.5)	38 (3.0)	22 (1.6)	135 (3.5)
<b>WHO immunodeficiency for age</b>							
N with measurement available	56 (77.8*)	106 (86.2*)	394 (84.9*)	525 (89.4*)	984 (78.4*)	951 (68.8*)	3016 (77.7*)
None	25 (44.6)	31 (29.3)	183 (46.5)	129 (24.6)	496 (50.4)	174 (18.3)	1038 (34.4)
Mild	18 (32.1)	9 (8.5)	55 (14.0)	58 (11.1)	137 (13.9)	77 (8.1)	354 (11.7)
Advanced	6 (10.7)	8 (7.6)	50 (12.7)	68 (13.0)	95 (9.7)	132 (13.9)	359 (11.9)
Severe	7 (12.5)	58 (54.7)	106 (26.9)	270 (51.4)	256 (26.0)	568 (59.7)	1265 (41.9)
<b>Viral load</b>							
N with measurement available	53 (73.6*)	56 (45.5*)	414 (89.2*)	433 (73.8*)	1034 (82.4*)	429 (31.0*)	2419 (62.3*)
≤1000 copies/mL	9 (17.0)	9 (16.1)	124 (30.0)	28 (6.5)	226 (21.9)	10 (2.3)	406 (16.8)
>1000 copies/mL	44 (83.0)	47 (83.9)	290 (70.1)	405 (93.5)	808 (78.1)	419 (97.7)	2013 (83.2)
Tuberculosis diagnosis	0 (0.0)	0 (0.0)	1 (0.2)	38 (6.5)	49 (3.9)	115 (8.3)	203 (5%)



NOTE. Data are no. (%) of patients, unless otherwise indicated. IQR: interquartile range; ART=antiretroviral therapy; PI=protease inhibitor; NNRTI=non-nucleoside reverse transcriptase inhibitor; NRTI= nucleoside reverse transcriptase inhibitor; WAZ=weight-for-age z-score; VL=viral load

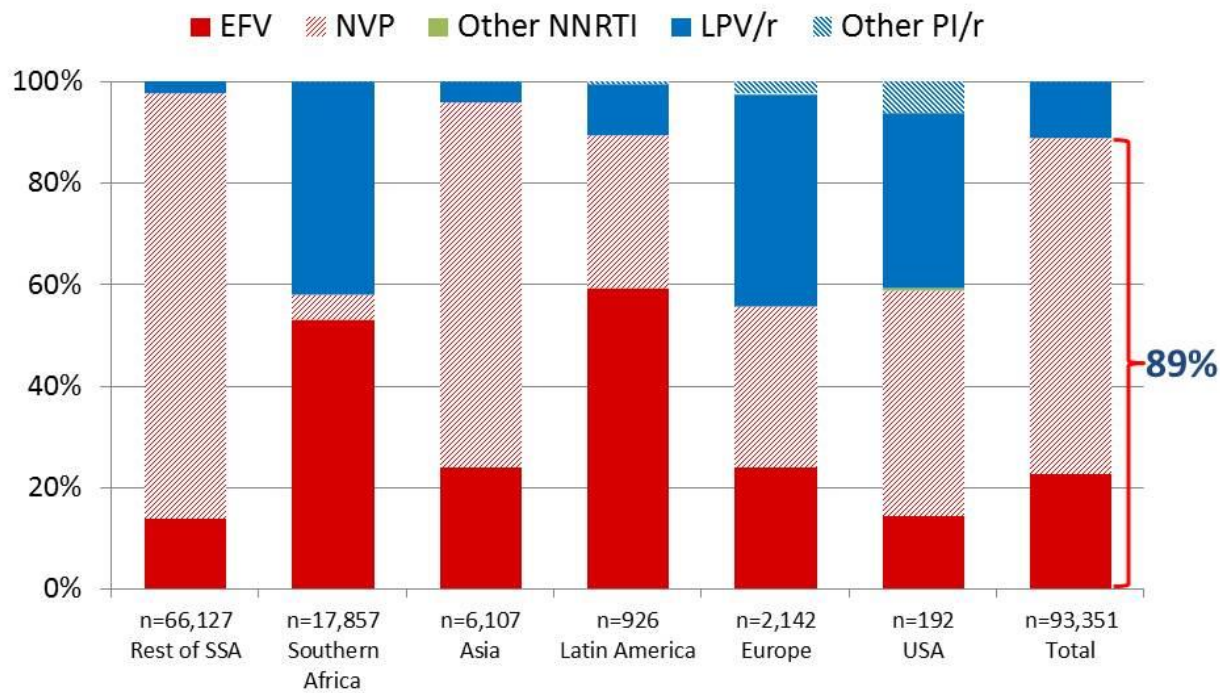
Figure S1. Flowchart of children included in the analysis



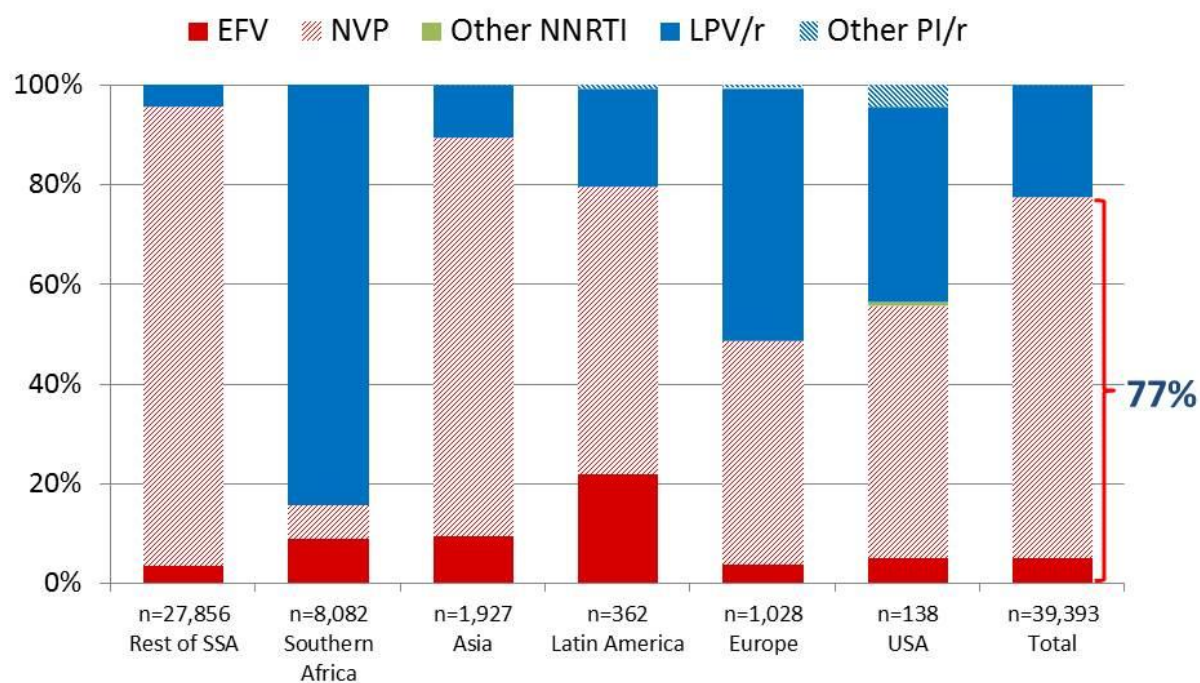
ART: antiretroviral therapy; ARVs=antiretroviral drugs; NNRTI=non-nucleoside reverse transcriptase inhibitor; PI=protease inhibitor.

**Figure S2. Drug class used in first-line ART regimen, by region**

(a) Amongst all children initiating ART



**(b)** Amongst children aged <3 years at ART initiation



ART: antiretroviral therapy; NNRTI=non-nucleoside reverse transcriptase inhibitor; PI=protease inhibitor; NVP=nevirapine; EFV=efavirenz; LPV=lopinavir; SSA=sub-Saharan Africa.

